

## CRYSTAL EDGE DISPLAY

The glow of this illuminated sign will draw every eye in the room.

- Optical acrylic frame
- LED power lasts more than 50,000 hours
- Artwork is printed on Titan™ backlit film
- Can be displayed horizontally or vertically; hanging hardware included
- Plugs into any standard USA outlet
- UL listed



### Crystal Edge Display

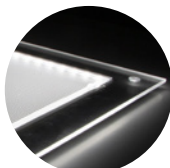
| Item # | Description   | 1      | 2-5    | 6-11   | 12-24  |
|--------|---------------|--------|--------|--------|--------|
| 325050 | 14" x 20" Kit | 314.75 | 305.25 | 292.75 | 283.25 |
| 325052 | 25" x 31" Kit | 472.00 | 457.75 | 439.00 | 424.75 |

Kit Includes: Frame, Backlit Graphic, AC Adapter and Mounting Hardware USD MSRP (C)

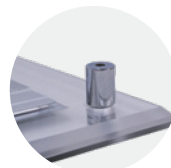
| Description | Product Size               | Finished Graphic Size | Product Wt. | Media               |
|-------------|----------------------------|-----------------------|-------------|---------------------|
| 14" x 20"   | 19.75"W x 13.75"H x 1.25"D | 16"W x 10"H           | 5 lbs.      | Titan™ Backlit Film |
| 25" x 31"   | 30.75"W x 24.75"H x 1.75"D | 27"W x 21"H           | 13.7 lbs.   | Titan™ Backlit Film |



Loosen bolts when you need to swap out posters.



Powerful LED lights along the inside edges of the frame diffuse the light evenly for a gentle glow.



Standoffs create space between wall and display to emphasize illumination.

### Suggested Uses

Restaurants  
Bars  
Wedding Expos  
Liquor Stores

## LED LIGHT BOX

LED light boxes offer a brighter and more energy-efficient alternative to traditional light box designs.

- Lightweight aluminum frame can be hung vertically or horizontally; hanging hardware included
- LED power lasts more than 50,000 hours
- Artwork is printed on Titan™ backlit film
- Plugs into any standard USA outlet
- UL listed

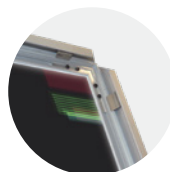


### LED Light Box

| Item # | Description       | 1      | 2-5    | 6-11   | 12-24  |
|--------|-------------------|--------|--------|--------|--------|
| 325031 | 23.5" x 17.5" Kit | 384.00 | 372.50 | 357.00 | 345.50 |
| 325032 | 27.5" x 21.5" Kit | 522.50 | 507.00 | 486.00 | 470.50 |
| 325033 | 35.5" x 23.5" Kit | 742.50 | 720.00 | 690.50 | 668.50 |

Kit Includes: Frame, Backlit Graphic, AC Adapter and Mounting Hardware USD MSRP (C)

| Description   | Product Size              | Finished Graphic Size | Product Wt. | Media               |
|---------------|---------------------------|-----------------------|-------------|---------------------|
| 23.5" x 17.5" | 25.6"W x 19.6"H x 0.875"D | 23.5"W x 17.5"H       | 8.5 lbs.    | Titan™ Backlit Film |
| 27.5" x 21.5" | 29.6"W x 23.6"H x 0.875"D | 27.5"W x 21.5"H       | 10.5 lbs.   | Titan™ Backlit Film |
| 35.5" x 23.5" | 37.6"W x 25.6"H x 0.875"D | 35.5"W x 23.5"H       | 14 lbs.     | Titan™ Backlit Film |



Edges flip open so swapping out posters is easy.



Powerful LED lights along the inside of the frame create a soothing glow.

Prices are subject to change; visit [showdowndisplays.com](http://showdowndisplays.com) for the most current pricing.  
Setup fee: \$20.00(G); no setup fee on orders placed via our website; see page 210 for details.  
View current graphic templates, assembly videos and instructions on our website.  
See pages 208-211 for additional information that may apply to your order.

AFTER FINAL PROOF APPROVAL  
PRODUCTION LEAD TIME IS  
**2DAYS**