

10' header shown with 3'W walls, 10'W wall and 90° Connector Set (sold separately)

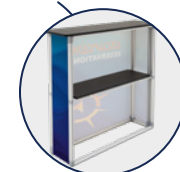
Journey Header

Item #	Description	1	2-5	6-11	12-24
254970	8'W Kit	450.00	432.00	414.00	391.50
254971	10'W Kit	550.00	528.00	506.00	478.50

Kit Includes: Hardware, 2 Graphic Panels and Soft Carry Case

USD MSRP (C)

Description	Product Size	Product Wt.	Media
8'W	95.875"W x 11.875"H x 1.625"D	11.8 lbs.	recycled polyester knit
10'W	120"W x 11.875"H x 1.625"D	14 lbs.	recycled polyester knit



Countertop and internal shelf supports up to 20 lbs.

Journey Counter

Item #	Description	1	2-5	6-11	12-24
254980	Kit	590.00	566.50	543.00	513.50

Kit Includes: Hardware, 3 Graphic Panels and Soft Carry Case

USD MSRP (C)

Product Size	Product Wt.	Media
43.75"W x 40.25"H x 12.625"D	33.7 lbs.	recycled polyester knit



3' x 3' Journey Enclosure

Item #	Description	1	2-5	6-11	12-24
254630	Kit	1450.00	1392.00	1334.00	1262.00

Kit Includes: Hardware, 4 Graphic Panels, 4 Blank Interior Panels, 4 - 90° Connector Sets, 2 Top Corner Support Bars and Soft Carry Case

USD MSRP (C)

5' x 9' Journey Enclosure

Item #	Description	1	2-5	6-11	12-24
254633	Kit	3320.00	3187.00	3054.00	2888.00

Kit Includes: Hardware, 6 Graphic Panels, 6 Blank Interior Panels, 4 - 90° Connector Sets, 2 - 180° Connector Sets, 4 Top Corner Support Bars and 8 Soft Carry Cases

USD MSRP (C)

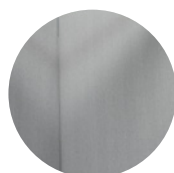
9' x 10' Journey Enclosure

Item #	Description	1	2-5	6-11	12-24
254636	Kit	3900.00	3744.00	3588.00	3393.00

Kit Includes: Hardware, 6 Graphic Panels, 6 Blank Interior Panels, 4 - 90° Connector Sets, 4 - 180° Connector Sets, 4 Top Corner Support Bars and 10 Soft Carry Cases

USD MSRP (C)

Description	Product Size	Product Wt.	Media
3' x 3'	39.375"W x 90.625"H x 36.125"D	52.6 lbs.	recycled polyester knit
5' x 9'	111.25"W x 90.625"H x 67.75"D	126.4 lbs.	recycled polyester knit
9' x 10'	111.25"W x 90.625"H x 126.75"D	159.4 lbs.	recycled polyester knit



Interior panels are light gray.



Included top corner support bars keep your enclosure stable.



When shut, the door can be locked to keep your merchandise safe.



ENCLOSURES production lead time after final proof approval

4-OR-5 DAYS

Prices are subject to change. Visit showdowndisplays.com for current pricing, graphic templates, product videos and assembly instructions. Setup fee: \$20.00(G); no setup fee on orders placed via our website. See pages 216-219 for order details.

SHOWDOWNDISPLAYS.COM · ASI 87188 · PPAI 254687 · SAGE 67383 · PPPC 20101202