

Showdown[®]

DISPLAYS



BEST SELLERS

2020

TABLE COVERS

6' with full-color
full-bleed

Underside
of material
is blank.

Covers three sides
of the table with a
9" overhang in back.

ECONOMY TABLE THROW

The open-back design of this throw gives you legroom and quick access to anything you store beneath the table.

- Now offering a larger maximum print area for even more ad space on Full-Color Front Only throws
- Draped corners
- Polyester poplin
- Machine-washable and wrinkle-resistant
- Flame retardant treated (FR rated for exhibit halls)



1 YEAR
PRODUCT
WARRANTY

Full-Color Front Only

Item #	Description	1	2-5	6-11	12-24
106045	4' Economy Throw	130.00	116.00	109.00	101.00
106002	6' Economy Throw	182.00	162.00	152.00	131.00
106014	8' Economy Throw	202.00	182.00	162.00	152.00
Stock fabric colors with full-color artwork printed on front. Artwork cannot exceed maximum size requirements.		USD MSRP (C)			

Description	Table Size	Front Only Graphic Size	Product Wt.
4'	48"W x 29"H x 29.75"D	40"W x 25"H	1.25 lbs.
6'	72"W x 29"H x 29.75"D	64"W x 25"H	2 lbs.
8'	96"W x 29"H x 29.75"D	64"W x 25"H	2.5 lbs.

Production Lead Time: 2 days from final proof approval

Full-Color Full-Bleed

Item #	Description	1	2-5	6-11	12-24
106042	4' Economy Throw	200.00	190.00	180.00	170.00
106010	6' Economy Throw	265.00	240.00	225.00	210.00
106022	8' Economy Throw	290.00	260.00	245.00	225.00
White fabric fully dye sublimated with full-color artwork.		USD MSRP (C)			

Description	Table Size	Full-Bleed Graphic Size	Product Wt.
4'	48"W x 29"H x 29.75"D	View Online Template	1.25 lbs.
6'	72"W x 29"H x 29.75"D	View Online Template	2 lbs.
8'	96"W x 29"H x 29.75"D	View Online Template	2.5 lbs.

Production Lead Time: 2 days from final proof approval



Full-Color Front Only

- Graphic can range in complexity from a simple one-color design to a detailed full-color design
- Vector art preferred
- Available in stock fabric colors only
- Artwork is printed on front only
- Maximum artwork size requirements apply
- Fold and store in included poly bag



Full-Color Full-Bleed

- Ideal for complex designs, photographic images, or art with gradients
- Vector and raster art accepted
- Art is dye sublimated on white fabric only
- Full-color artwork can be printed across the entire throw
- No artwork size restrictions
- Fold and store in included poly bag

Stock Table Throw Colors

Black	Navy Blue PMS 2767
Blueberry PMS 647	Orange PMS 1505
Brown PMS 476	Purple PMS Violet
Burgundy PMS 504	Red PMS 201
Charcoal PMS 425	Royal Blue PMS 661
Gray PMS 422	White
Hunter Green PMS 350	Yellow PMS 1235
Lime Green PMS 375	

PMS colors are for reference only and may vary slightly from actual color.

Setup fee: \$20.00(G); no setup fee on orders placed via our website. View current graphic templates, assembly videos and instructions on our website.

STANDARD TABLE THROW

Our most popular table throw is elegant in its simplicity.

- Now offering a larger maximum print area for even more ad space on Full-Color Front Only throws
- Covers four sides of the table, viewable from all sides
- Draped corners
- Polyester poplin
- Machine-washable and wrinkle-resistant
- Flame retardant treated (FR rated for exhibit halls)



Keep your supplies and accessories out of sight.

Full-Color Front Only

Item #	Description	1	2-5	6-11	12-24
109105	4' Standard Throw	140.00	125.00	118.00	109.00
109002	6' Standard Throw	202.00	172.00	162.00	152.00
109014	8' Standard Throw	222.00	192.00	182.00	161.00

Stock fabric colors with full-color artwork printed on front. Artwork cannot exceed maximum size requirements. USD MSRP (C)

Description	Table Size	Front Only Graphic Size	Product Wt.
4'	48"W x 29"H x 29.75"D	40"W x 25"H	1.5 lbs.
6'	72"W x 29"H x 29.75"D	64"W x 25"H	2.5 lbs.
8'	96"W x 29"H x 29.75"D	64"W x 25"H	3 lbs.

Production Lead Time: 2 days from final proof approval

Full-Color Full-Bleed

Item #	Description	1	2-5	6-11	12-24
109106	4' Standard Throw	260.00	247.00	234.00	221.00
109010	6' Standard Throw	295.00	265.00	250.00	235.00
109022	8' Standard Throw	315.00	285.00	270.00	250.00

White fabric fully dye sublimated with full-color artwork. USD MSRP (C)

Description	Table Size	Full-Bleed Graphic Size	Product Wt.
4'	48"W x 29"H x 29.75"D	View Online Template	1.5 lbs.
6'	72"W x 29"H x 29.75"D	View Online Template	2.5 lbs.
8'	96"W x 29"H x 29.75"D	View Online Template	3 lbs.

Production Lead Time: 2 days from final proof approval

Add-On

Table Throw Messenger Bag

Best for folded table throws; features shoulder strap for easy transportation.



Table Throw Messenger Bag

Item #	1	2-5	6-11	12-24
220107	33.60	31.20	29.20	27.90

USD MSRP (C)



8' with full-color full-bleed transforms into a 6' fitted



CONVERTIBLE TABLE THROW

This throw is easily convertible so it fits both 8' and 6' table sizes.

- Now offering a larger maximum print area for even more ad space on Full-Color Front Only throws
- Hook-and-loop fasteners make size conversion quick and easy
- Covers four sides of the table
- Polyester poplin
- Machine-washable and wrinkle-resistant
- Flame retardant treated (FR rated for exhibit halls)



Full-Color Front Only

Item #	Description	1	2-5	6-11	12-24
104014	6'/8' Convertible Throw	255.00	225.00	215.00	205.00

Stock fabric colors with full-color artwork printed on front. Artwork cannot exceed maximum size requirements. USD MSRP (C)

Full-Color Full-Bleed

Item #	Description	1	2-5	6-11	12-24
104022	6'/8' Convertible Throw	320.00	290.00	280.00	265.00

White fabric fully dye sublimated with full-color artwork. USD MSRP (C)

Description	Table Size	Front Only Graphic Size	Full-Bleed Graphic Size	Product Wt.
6'/8'	72"/96"W x 29"H x 29.75"D	64"W x 25"H	View Online Template	3 lbs.

Production Lead Time: 2 days from final proof approval

Converts from 8' to 6' and Back Again!



1. Grab the back corner of the table throw.



2. Attach the corner to the back of the throw using the built-in hook-and-loop fasteners.



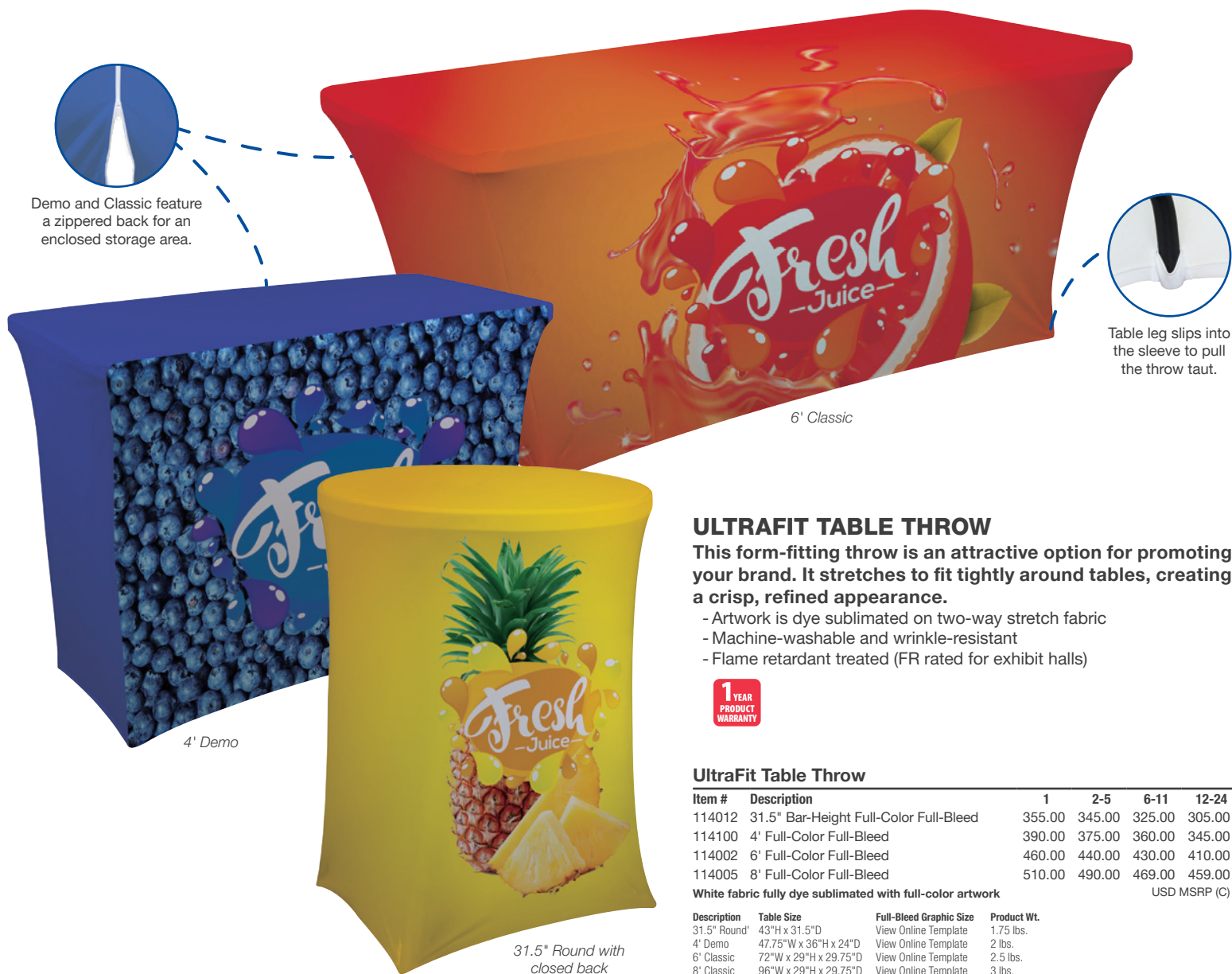
3. Grab the front corner of the throw and fold it tightly around the back corner of the table.



4. Secure it in place with the built-in hook-and-loop fasteners.

Setup fee: \$20.00(G); no setup fee on orders placed via our website. View current graphic templates, assembly videos and instructions on our website.

TABLE COVERS



Demo and Classic feature a zippered back for an enclosed storage area.

Table leg slips into the sleeve to pull the throw taut.

4' Demo

6' Classic

31.5" Round with closed back

ULTRAFIT TABLE THROW

This form-fitting throw is an attractive option for promoting your brand. It stretches to fit tightly around tables, creating a crisp, refined appearance.

- Artwork is dye sublimated on two-way stretch fabric
- Machine-washable and wrinkle-resistant
- Flame retardant treated (FR rated for exhibit halls)

1 YEAR PRODUCT WARRANTY

UltraFit Table Throw

Item #	Description	1	2-5	6-11	12-24
114012	31.5" Bar-Height Full-Color Full-Bleed	355.00	345.00	325.00	305.00
114100	4' Full-Color Full-Bleed	390.00	375.00	360.00	345.00
114002	6' Full-Color Full-Bleed	460.00	440.00	430.00	410.00
114005	8' Full-Color Full-Bleed	510.00	490.00	469.00	459.00

White fabric fully dye sublimated with full-color artwork

Description	Table Size	Full-Bleed Graphic Size	Product Wt.
31.5" Round	43"H x 31.5"D	View Online Template	1.75 lbs.
4' Demo	47.75"W x 36"H x 24"D	View Online Template	2 lbs.
6' Classic	72"W x 29"H x 29.75"D	View Online Template	2.5 lbs.
8' Classic	96"W x 29"H x 29.75"D	View Online Template	3 lbs.

Production Lead Time: 3 days from final proof approval



6'

NEW & IMPROVED

Now finished with a hemmed edge.

PREMIUM TABLE THROW

Premium throws are perfect for showcasing eye-catching, full-color imagery with an upscale look.

- Covers four sides of the table
- Draped corners
- Nearly-opaque material
- Artwork is dye sublimated on two-way stretch fabric
- Machine-washable
- Flame retardant treated (FR rated for exhibit halls)

1 YEAR PRODUCT WARRANTY

Full-Color Full-Bleed

Item #	Description	1	2-5	6-11	12-24
109070	6' Premium Throw	450.00	400.00	375.00	350.00
109071	8' Premium Throw	475.00	420.00	395.00	370.00

White fabric fully dye sublimated with full-color artwork. USD MSRP (C)

Description	Table Size	Full-Bleed Graphic Size	Product Wt.
6'	72"W x 29"H x 29.75"D	View Online Template	3.5 lbs.
8'	96"W x 29"H x 29.75"D	View Online Template	4.75 lbs.

Production Lead Time: 2 days from final proof approval

Setup fee: \$20.00(G); no setup fee on orders placed via our website. View current graphic templates, assembly videos and instructions on our website.

STANDARD TABLE RUNNER

This stylish runner lets you add a logo or design to any table.

- Now offering a larger maximum print area for even more ad space
- Available in two widths
- Polyester poplin
- Machine-washable and wrinkle-resistant
- Flame retardant treated (FR rated for exhibit halls)
- Table throw sold separately



Full-Color Front Only

Item #	Description	1	2-5	6-11	12-24
102002	28" Standard Runner	131.00	121.00	111.00	101.00
102014	57" Standard Runner	162.00	142.00	132.00	122.00

Stock fabric colors with full-color artwork printed on front. USD MSRP (C)
Artwork cannot exceed maximum size requirements.

Full-Color Full-Bleed

Item #	Description	1	2-5	6-11	12-24
102010	28" Standard Runner	190.00	165.00	160.00	145.00
102022	57" Standard Runner	220.00	195.00	180.00	165.00

White fabric fully dye sublimated with full-color artwork. USD MSRP (C)

Description	Finished Size	Front Only Graphic Size	Dye Sub Graphic Size	Product Wt.
28"	28"W x 80"D	24"W x 25"H	View Online Template	0.5 lb.
57"	57"W x 80"D	50"W x 25"H	View Online Template	1 lb.

Production Lead Time: 2 days from final proof approval

Stock Standard Runner Colors

- Black
- Blueberry PMS 647
- Brown PMS 476
- Burgundy PMS 504
- Charcoal PMS 425
- Gray PMS 422
- Hunter Green PMS 350
- Navy Blue PMS 2767
- Purple PMS Violet
- Red PMS 201
- Royal Blue PMS 661
- White
- Yellow PMS 1235

PMS colors are for reference only and may vary slightly from actual color.



57" with full-color front only



28" with full-color full-bleed

LAZERLINE THROW

These cost-effective throws are laser-cut for a crisp finished edge.

- Heat-treated edges will not fray or unravel
- Available in 3-sided or 4-sided throws
- Polyester poplin
- Machine-washable and wrinkle-resistant
- Flame retardant treated (FR rated for exhibit halls)



4-sided table throws offer full coverage on all sides of the table.



3-sided table throws have a 9" overhang in the back to keep throw from slipping off the table.



6' Throw

Laser-cut edges for a clean look.

Full-Color Front Only

Item #	Description	1	2-5	6-11	12-24
108213	6' LazerLine 3-Sided Throw Full-Color Front Only	164.00	146.00	137.00	118.00
108214	8' LazerLine 3-Sided Throw Full-Color Front Only	182.00	164.00	146.00	137.00
108201	6' LazerLine 4-Sided Throw Full-Color Front Only	182.00	155.00	146.00	137.00
108202	8' LazerLine 4-Sided Throw Full-Color Front Only	200.00	173.00	164.00	145.00

Stock fabric colors with full-color artwork printed on front. USD MSRP (C)
Artwork cannot exceed maximum size requirements.

Description	Table Size	Front Only Graphic Size	Product Wt. (3-Sided / 4-Sided)
6'	72"W x 29"H x 29.75"D	64"W x 25"H	2 lbs. / 2.5 lbs.
8'	96"W x 29"H x 29.75"D	64"W x 25"H	2.5 lbs. / 3 lbs.

Production Lead Time: 2 days from final proof approval

Stock Throw Colors

- Black
- Blueberry PMS 647
- Brown PMS 476
- Burgundy PMS 504
- Charcoal PMS 425
- Gray PMS 422
- Hunter Green PMS 350
- Lime Green PMS 375
- Navy Blue PMS 2767
- Orange PMS 1505
- Purple PMS Violet
- Red PMS 201
- Royal Blue PMS 661
- Yellow PMS 1235

PMS colors are for reference only and may vary slightly from actual color.

Setup fee: \$20.00(G); no setup fee on orders placed via our website. View current graphic templates, assembly videos and instructions on our website.

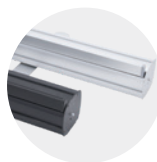
RETRACTABLE BANNERS



36"

33.5"

31.5" with single light kit
(sold separately)



Hardware available in silver or black.



Two swivel feet for stability.



Banner rail easily attaches to the top of the pole for quick setup.

ECONOMY RETRACTOR

The popular Economy retractor is versatile and budget-friendly, making it a great option for the cost-conscious marketer.

- Lightweight aluminum base
- Banner available in Titan™ no-curl hybrid media or Titan™ no-curl opaque fabric
- Additional sizes available online



Economy Retractor

Item #	Description	1	2-5	6-11	12-24
261134	31.5" No-Curl Hybrid Media Kit	271.00	251.00	240.00	228.00
262162	31.5" No-Curl Opaque Fabric Kit	271.00	251.00	240.00	228.00
261136	33.5" No-Curl Hybrid Media Kit	295.00	275.00	263.00	243.00
262163	33.5" No-Curl Opaque Fabric Kit	295.00	275.00	263.00	243.00
261138	36" No-Curl Hybrid Media Kit	327.00	314.00	302.00	290.00
262164	36" No-Curl Opaque Fabric Kit	327.00	314.00	302.00	290.00
Kit Includes: Hardware, Installed Banner and Soft Carry Case		USD MSRP (C)			

Description	Product Size	Finished Graphic Size	Product Wt.
31.5"	32"W x 83.5"H x 15"D	31.5"W x 78.5"H	7 lbs.
33.5"	34"W x 83.5"H x 15"D	33.5"W x 78.5"H	7.25 lbs.
36"	36.5"W x 83.5"H x 15"D	36"W x 78.5"H	8.5 lbs.

Production Lead Time: 2 days from final proof approval

Add-On



Ultimate LED Single Light Kit

Item #	Description	1	2-5	6-11	12-24
150120	Kit	144.00	140.00	135.00	131.00
		USD MSRP (C)			



33.5"

31.5"



Dry-erase media lets you write out your message and wipe it away (markers not included).

ECONOMY PLUS RETRACTOR

This display is as reliable as the popular Economy Retractor, but it includes some great additional features, like improved durability.

- Available in two widths
- Single-footed design keeps the retractor stable while maintaining a low profile
- Flip-lever telescoping pole makes setup and adjustment simple
- Banner available in Titan™ no-curl hybrid media or dry-erase media



Economy Plus Retractor

Item #	Description	1	2-5	6-11	12-24
261012	31.5" No-Curl Hybrid Media Kit	310.00	288.00	273.00	262.00
262191	31.5" Dry-Erase Media Kit	310.00	288.00	273.00	262.00
261002	33.5" No-Curl Hybrid Media Kit	338.00	315.00	301.00	278.00
262192	33.5" Dry-Erase Media Kit	338.00	315.00	301.00	278.00
Kit Includes: Hardware, Installed Banner and Soft Carry Case		USD MSRP (C)			

Description	Product Size	Finished Graphic Size	Product Wt.
31.5"	32"W x 62"-82.5"H x 15"D	31.5"W x 58"-78.5"H	7 lbs.
33.5"	34"W x 62"-82.5"H x 15"D	33.5"W x 58"-78.5"H	7.5 lbs.

Production Lead Time: 2 days from final proof approval



Banner rail easily attaches to the top of the pole for quick setup.



Hook-and-loop fasteners make banners easy to swap out.

Setup fee: \$20.00(G); no setup fee on orders placed via our website. View current graphic templates, assembly videos and instructions on our website.

IDEAL RETRACTOR

The Ideal Retractor is designed from the ground up to be a quick, simple solution for short-term promotional applications.

- Lightweight, portable base
- Three-section shock cord pole
- Artwork is printed on tear-resistant Titan™ polypropylene media
- Banner is printed single-sided; double-sided option includes two banners

2 MO.
HARDWARE
WARRANTY

25
RCAT
RATING

Ideal Retractor

Item #	Description	1	2-5	6-11	12-24
261150	31.5" Single Kit	113.00	106.00	101.00	94.00
261156	31.5" Double Kit	224.00	220.00	198.00	195.00
261153	33.5" Single Kit	124.00	117.00	110.00	103.00
261158	33.5" Double Kit	244.00	240.00	216.00	212.00

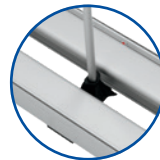
Kit Includes: Hardware, Installed Banner(s) and Soft Carry Case USD MSRP (C)

Description	Product Size (Single / Double)	Finished Graphic Size	Product Wt. (Single / Double)
31.5"	32.25"W x 82.25"H x 10.25"D / 8"D	31.25"W x 79.5"H	4.6 lbs. / 9.25 lbs.
33.5"	34.25"W x 82.25"H x 10.25"D / 8"D	33.25"W x 79.5"H	5 lbs. / 9.5 lbs.

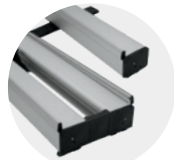
Production Lead Time: 1 day from final proof approval



Double-sided retractor features a center-mounted pole with twin banner hooks on top.



Shock cord pole makes setup and teardown easy.



Lightweight aluminum base features plastic ends and is available in single- and double-banner options.



31.5" double



33.5" single

VALUE RETRACTOR

The Value Retractor is a cost-conscious option for your portable signage needs.

- Printed on tear-resistant Titan™ polypropylene media
- Two swivel feet for stability
- Available in three widths
- Additional media option available online

6 MO.
HARDWARE
WARRANTY

50
RCAT
RATING

Value Retractor

Item #	Description	1	2-5	6-11	12-24
262240	31.5" Polypropylene Media Kit	167.00	157.00	149.00	139.00
262243	33.5" Polypropylene Media Kit	183.00	172.00	163.00	152.00
262246	36" Polypropylene Media Kit	209.00	196.00	186.00	173.00

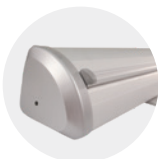
Kit Includes: Hardware, Installed Banner and Soft Carry Case USD MSRP (C)

Description	Product Size	Finished Graphic Size	Product Wt.
31.5"	34"W x 82"H x 15"D	31.5"W x 79.5"H	7 lbs.
33.5"	35.75"W x 82"H x 15"D	33.5"W x 79.5"H	7.25 lbs.
36"	38.5"W x 82"H x 15"D	36"W x 79.5"H	7.6 lbs.

Production Lead Time: 2 days from final proof approval



Shock cord pole makes setup and teardown easy.



Lightweight aluminum base with plastic ends.



31.5"



33.5"



36"

Setup fee: \$20.00(G); no setup fee on orders placed via our website. View current graphic templates, assembly videos and instructions on our website.



46.5" double

33.5" single

Dry-erase media lets you write out your message and wipe it away (markers not included).

DELUXE PRO RETRACTOR

The Deluxe Pro Retractor features a rounded base with durable aluminum end caps, and swapping out graphics is a breeze with the hook-and-loop banner system.

- Banner available in Titan™ no-curl opaque fabric or dry-erase media
- Banner is printed single-sided; double-sided option includes two banners

2 YEAR
HARDWARE
WARRANTY

200
RCAT
RATING

Deluxe Pro Retractor

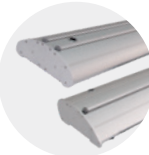
Item #	Description	1	2-5	6-11	12-24
262250	33.5" Single No-Curl Opaque Fabric Kit	341.00	321.00	303.00	283.00
262251	33.5" Double No-Curl Opaque Fabric Kit	499.00	487.00	441.00	429.00
262202	33.5" Single Dry-Erase Media Kit	341.00	321.00	303.00	283.00
262203	33.5" Double Dry-Erase Media Kit	499.00	487.00	441.00	429.00
262254	46.5" Single No-Curl Opaque Fabric Kit	382.00	359.00	340.00	317.00
262255	46.5" Double No-Curl Opaque Fabric Kit	596.00	581.00	528.00	513.00
262204	46.5" Single Dry-Erase Media Kit	382.00	359.00	340.00	317.00
262205	46.5" Double Dry-Erase Media Kit	596.00	581.00	528.00	513.00
Kit Includes: Hardware, Installed Banner(s) and Soft Carry Case				USD MSRP (C)	

Description	Product Size (Single / Double)	Finished Graphic Size	Product Wt. (Single / Double)
33.5"	34.75"W x 65.25"-83.25"H x 8.5"D / 9.25"D	33.5"W x 61.5"-79.5"H	12.25 lbs. / 16 lbs.
46.5"	48.5"W x 65.25"-83.25"H x 8.5"D / 9.25"D	46.5"W x 61.5"-79.5"H	16.75 lbs. / 22.5 lbs.

Production Lead Time: 1 day for no-curl opaque fabric / 2 days for dry-erase media from final proof approval



Hook-and-loop fasteners make banners easy to swap out.



Streamlined base is available in single- and double-banner options.



SUPERB RETRACTOR

This retractor features a flip-open base for easy graphic changes, and its hardware is built to last a lifetime.

- Durable construction makes this a long-lasting option
- Artwork is printed on Titan™ no-curl hybrid media

LIFE
HARDWARE
WARRANTY

800
RCAT
RATING

Superb Retractor

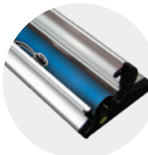
Item #	Description	1	2-5	6-11	12-24
261118	Kit	435.00	419.00	387.00	374.00
262023	Banner and Roller	259.00	249.00	230.00	221.00
Kit Includes: Hardware, Installed Banner and Soft Carry Case				USD MSRP (C)	

Product Size	Finished Graphic Size	Product Wt.	Media
35.5"W x 37"-80.5"H x 7.75"D	33.5"W x 31.5"-78"H	8 lbs.	Titan™ No-Curl Hybrid Media

Production Lead Time: 1 day from final proof approval



Low-profile base is available with black or silver ends.



Flip-open base allows for easy banner changes.



Flip-lever telescoping pole makes setup and adjustment simple.

LUMOS RETRACTOR

This retractable banner is illuminated from both the top and bottom. What a bright idea!

- Artwork is printed on Titan™ no-curl opaque fabric
- Flip lever telescoping pole makes setup and adjustment simple
- Banner attaches magnetically so it's easy to swap out
- AC adapter and power cord included
- US Patent #10109222



Lumos Retractor

Item #	Description	1	2-5	6-11	12-24
261230	Kit	567.00	533.00	505.00	471.00
261236	Cartridge Kit	260.00	244.00	231.00	216.00
Kit Includes: Hardware, Installed Banner and Soft Carry Case		USD MSRP (C)			
Cartridge Kit Includes: Cartridge with Installed Banner and Snap Rail					
Product Size	Finished Graphic Size	Product Wt.	Media		
37.5"W x 31"-96"H x 9.5"D	33.5"W x 26"-90"H	22.5 lbs.	Titan™ No-Curl Opaque Fabric		

Production Lead Time: 2 days from final proof approval



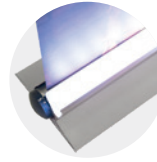
LIGHTS UP!



Graphic roller cartridge slides in and out of the end of the base so it can be swapped easily.



Top rail light simply slides onto the snap rail and is secured with thumbscrews.



Bottom light bar is built into the base.



Cam lock secures the pole to the base.

JUMBO WIDE RETRACTOR

Create an impressive backdrop with this ultra-wide retractable banner.

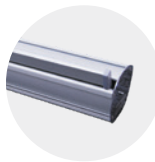
- High-tension base springs keep the banner taut
- Double-footed design for stability
- Banner available in Titan™ no-curl fabric or Titan™ 13 oz. smooth scrim vinyl
- Available in three widths



Jumbo Wide Retractor

Item #	Description	1	2-5	6-11	12-24
262138	5' No-Curl Fabric Kit	570.00	554.00	530.00	509.00
261080	5' 13 oz. Smooth Scrim Vinyl Kit	570.00	554.00	530.00	509.00
262139	6' No-Curl Fabric Kit	686.00	661.00	636.00	611.00
261082	6' 13 oz. Smooth Scrim Vinyl Kit	686.00	661.00	636.00	611.00
262140	8' No-Curl Fabric Kit	802.00	774.00	747.00	719.00
261018	8' 13 oz. Smooth Scrim Vinyl Kit	802.00	774.00	747.00	719.00
Kit Includes: Hardware, Installed Banner and Soft Carry Case		USD MSRP (C)			
Description	Product Size	Finished Graphic Size	Product Wt. (Fabric / Vinyl)		
5'	60.5"W x 83"H x 15.75"D	59.75"W x 78.75"H	18.85 lbs. / 20.75 lbs.		
6'	72.5"W x 83"H x 15.75"D	71.75"W x 78.75"H	21.35 lbs. / 23.5 lbs.		
8'	95.5"W x 83"H x 15.75"D	94.75"W x 78.75"H	26.35 lbs. / 29.5 lbs.		

Production Lead Time: 2 days for 13 oz. smooth scrim vinyl / 4 days for no-curl fabric from final proof approval



Hardware comes in silver.



Two shock cord poles support the banner.



Setup fee: \$20.00(G); no setup fee on orders placed via our website. View current graphic templates, assembly videos and instructions on our website.



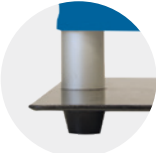
EUROFIT BANNER DISPLAY

A fabric graphic cover slides over a tubed frame, letting you create amazing backdrops or portable privacy walls.

- Multiple sizes can be arranged together for endless display possibilities
- Artwork is dye sublimated on polyester knit
- Double-sided graphic cover is viewable from both the front and back of the display
- Steel base with a black, powder-coated finish
- Not compatible with the EuroFit Connector or EuroFit Cascade Merchandiser kits



Graphic cover slides easily over the frame for quick setup.



Plastic feet elevate the base and keep the display stable.

EuroFit Banner Display

Item #	Description	1	2-5	6-11	12-24
255110	2' Kit	225.00	218.00	212.00	205.00
255113	3' Kit	309.00	300.00	290.00	281.00
255116	4' Kit	413.00	404.00	391.00	382.00
255119	5' Kit	465.00	456.00	442.00	428.00
Kit Includes: Hardware, Graphic Cover and Soft Carry Case				USD MSRP (C)	

Description	Product Size	Finished Graphic Size	Product Wt.	Media
2'	25.75"W x 91"H x 10"D	View Online Template	15.5 lbs.	Polyester Knit
3'	37.75"W x 91"H x 10"D	View Online Template	20.5 lbs.	Polyester Knit
4'	49"W x 91"H x 10"D	View Online Template	25.5 lbs.	Polyester Knit
5'	61"W x 91"H x 10"D	View Online Template	31.5 lbs.	Polyester Knit

Production Lead Time: 4 days from final proof approval

Ultimate LED Light Kit and EuroFit Light Clamp

Add an Ultimate LED Light Kit to your display using the EuroFit light clamp (sold separately).
For use on horizontal tubing only.

Item #	Description	1	2-5	6-11	12-24
150120	Ultimate LED Single Light Kit	144.00	140.00	135.00	131.00
Kit Includes: Light, Clamp, Clip, USB Adapter and Soft Carry Case					
255125	EuroFit Light Clamp	5.40	5.20	5.10	4.90
USD MSRP (C)					



Setup fee: \$20.00(G); no setup fee on orders placed via our website. View current graphic templates, assembly videos and instructions on our website.



FRAMEWORX BANNER DISPLAY

These lightweight displays feature a contemporary design that brings new life to your exhibit.

- Banners attach using low-profile clear grommets
- Face cutout hole locations are standard and cannot be customized
- Additional sizes available online



3' FrameWorx Banner Display

Item #	Description	1	2-5	6-11	12-24
263061	13 oz. Smooth Scrim Vinyl Single-Sided Kit	142.00	134.00	128.00	121.00
263062	13 oz. Smooth Scrim Vinyl Double-Sided Kit	170.00	160.00	153.00	144.00
263065	No-Curl Opaque Fabric Kit	182.00	172.00	164.00	154.00
Kit Includes: Silver or Black Hardware, Banner and Soft Carry Case		USD MSRP (C)			

Product Size	Finished Graphic Size	Product Wt.
36.75"W x 74"H x 15.5"D	23.5"W x 67"H	5.6 lbs.

3.5' FrameWorx Banner Display

Item #	Description	1	2-5	6-11	12-24
263070	13 oz. Smooth Scrim Vinyl Single-Sided Kit	159.00	150.00	144.00	136.00
263071	13 oz. Smooth Scrim Vinyl Double-Sided Kit	187.00	177.00	169.00	159.00
263074	No-Curl Opaque Fabric Kit	194.00	183.00	175.00	165.00
Kit Includes: Silver or Black Hardware, Banner and Soft Carry Case		USD MSRP (C)			

Product Size	Finished Graphic Size	Product Wt.
41"W x 81.75"H x 15.5"D	27.5"W x 75"H	6.2 lbs.

3.5' FrameWorx Face Cutout

Item #	Description	1	2-5	6-11	12-24
263054	13 oz. Smooth Scrim Vinyl Single Face Cutout Kit	159.00	150.00	144.00	136.00
263055	13 oz. Smooth Scrim Vinyl Double Face Cutout Kit	159.00	150.00	144.00	136.00
263056	13 oz. Smooth Scrim Vinyl Junior Face Cutout Kit	159.00	150.00	144.00	136.00
Kit Includes: Silver or Black Hardware, Banner and Soft Carry Case		USD MSRP (C)			

Product Size	Finished Graphic Size	Product Wt.
41"W x 81.75"H x 15.5"D	27.5"W x 75"H (View Online Template)	6.2 lbs.

Production Lead Time: 2 days from final proof approval



Setup fee: \$20.00(G); no setup fee on orders placed via our website. View current graphic templates, assembly videos and instructions on our website.

BANNER DISPLAYS



TRI-X BANNER DISPLAY

The clean X design of this display makes it simple, durable and easy to assemble.

- Strong fiberglass arms
- Artwork is printed on Titan™ 13 oz. smooth scrim vinyl
- Banners are finished with brass grommets by default; can be customized with nickel or clear plastic grommets by request



Tri-X Banner Display

Item #	Description	1	2-5	6-11	12-24
263109	23.5" x 60" Kit	93.00	90.00	88.00	83.00
263106	23.5" x 70" Kit	103.00	100.00	98.00	96.00
263103	31.5" x 70" Kit	127.00	122.00	117.00	107.00
263112	31.5" x 79" Kit	146.00	141.00	136.00	127.00
263100	33.5" x 80" Kit	149.00	144.00	139.00	135.00

Kit Includes: Hardware, Banner and Drawstring Case

USD MSRP (C)

Description	Product Size	Finished Graphic Size	Product Wt.	Media
23.5" x 60"	23.5"W x 60"H x 32.5"D	23.5"W x 60"H	2 lbs.	Titan™ 13 oz. Smooth Scrim Vinyl
23.5" x 70"	23.5"W x 70"H x 33.5"D	23.5"W x 70"H	2.25 lbs.	Titan™ 13 oz. Smooth Scrim Vinyl
31.5" x 70"	31.5"W x 70"H x 31.5"D	31.5"W x 70"H	2.25 lbs.	Titan™ 13 oz. Smooth Scrim Vinyl
31.5" x 79"	31.5"W x 79"H x 32.5"D	31.5"W x 79"H	3 lbs.	Titan™ 13 oz. Smooth Scrim Vinyl
33.5" x 80"	33.5"W x 80"H x 32.5"D	33.5"W x 79"H	3.25 lbs.	Titan™ 13 oz. Smooth Scrim Vinyl

Production Lead Time: 2 days from final proof approval



FLEX BANNER DISPLAY

This display's versatile central post can be customized with banners and lit racks. We've created three kits to get started, but add-ons are interchangeable so you can create your own configuration.

- Your artwork will be dye sublimated on polyester knit
- Banner is double-sided
- Sturdy aluminum center post and banner rails
- Weighted steel base for stability
- Assembly tools included



Flex Banner Display

Item #	Description	1	2-5	6-11	12-24
263240	Single-Banner Kit	370.00	360.00	350.00	335.00
263245	Single-Banner with Lit Racks Kit	475.00	460.00	450.00	430.00
263243	Double-Banner Kit	510.00	495.00	485.00	465.00
263247	Banner and Rails Add-On	162.00	154.00	145.00	137.00
263248	Lit Racks Add-On (set of 3)	112.00	106.00	101.00	95.00

Kits Includes: Hardware and Double-Sided Banner(s)

USD MSRP (C)

Description	Product Size	Finished Graphic Size	Product Wt.	Media
Single-Banner	27"W x 74"H x 14.75"D	23"W x 64"H	24 lbs.	Polyester Knit
Single-Banner with Lit Racks	36"W x 74"H x 14.75"D	23"W x 64"H	31 lbs.	Polyester Knit
Double-Banner	51.5"W x 74"H x 14.75"D	23"W x 64"H	26.25 lbs.	Polyester Knit

Production Lead Time: 4 days from final proof approval



Segmented pole pieces fit together and must be secured in place with the included hex wrench.



Banner rails slide into a groove on the central post and can be adjusted for custom banner sizes (call for quote; restrictions may apply).

Setup fee: \$20.00(G); no setup fee on orders placed via our website. View current graphic templates, assembly videos and instructions on our website.

showdowndisplays.com



EVERYDAY BANNER DISPLAY

This display features a durable steel frame with a long-lasting, powder-coated finish.

- The Everyday Banner Display features pole pockets and dowels to hold the banner in place
- The Everyday Heavy-Duty Banner Display has all the same features as the Everyday Banner Display, but reinforced with a stronger, thicker frame and wider base
- The Everyday Snap Rail Banner Display replaces the dowel and pole pockets with snap rails for a clean finish
- Hex wrench included



Everyday Banner Display

Item #	Description	1	2-5	6-11	12-24
210265	Everyday Kit	185.00	180.00	175.00	170.00
210226	Everyday Heavy-Duty Kit	219.00	216.00	212.00	207.00
190161	72"H x 24"W Banner Only*	75.00	73.00	71.00	70.00
190252	72"H x 36"W Banner Only*	94.00	92.00	90.00	89.00
Kit Includes: Hardware, 1 Banner (24"W x 72"H) and 2 Dowels (24")				USD MSRP (C)	
*Dowels not included in banner only orders					

Description	Product Size	Finished Graphic Size	Product Wt.	Media
Everyday	24"W x 48"-92"H x 13"D	12"-36"W x 12"-91"H	11 lbs.	Titan™ 11 mil Polyester
Heavy-Duty	24"W x 55"-105"H x 14"D	12"-36"W x 12"-104"H	13.5 lbs.	Titan™ 11 mil Polyester

Everyday Snap Rail Banner Display

Item #	Description	1	2-5	6-11	12-24
264030	24" Kit	205.00	200.00	190.00	185.00
264032	30" Kit	215.00	210.00	200.00	195.00
190310	24" Banner Only	75.00	73.00	71.00	70.00
190311	30" Banner Only	84.00	82.00	80.00	79.00
24" Kit Includes: Hardware and 1 Banner (24"W x 70.5"H)				USD MSRP (C)	
30" Kit Includes: Hardware and 1 Banner (30"W x 70.5"H)					
Hardware includes 4 snap rails for single- or double-sided use					

Description	Product Size	Finished Graphic Size	Product Wt.	Media
24"	24"W x 48"-92"H x 13.25"D	24"W x 12"-92"H	13 lbs.	Titan™ 11 mil Polyester
30"	30"W x 48"-92"H x 13.25"D	30"W x 12"-92"H	14 lbs.	Titan™ 11 mil Polyester



Everyday banner display with silver hardware



Everyday Heavy-Duty banner display



Everyday Snap Rail banner display with two banners



Hardware available in silver or black (Heavy-Duty and Snap Rail hardware only available in black).



Telescoping pole with thumbscrew lets you adjust the hardware for custom banner sizes (call for quote; restrictions may apply).



Each display can hold one or two banners.



Snap Rail kit offers easy banner installation: just slide the banner into the snap rail and clamp shut.

Setup fee: \$20.00(G); no setup fee on orders placed via our website. View current graphic templates, assembly videos and instructions on our website.



3' x 8' banner with rope and grommets



3' x 8' banner with grommets



2' x 4' banners with pole pockets



3' x 6' banner with grommets

10 OZ. SCRIM VINYL BANNER

This light-duty banner is perfect for indoor or short-term outdoor use.

- See page 15 for popular finishing styles

10 oz. Scrim Vinyl Banner

Item #	Size	Product Wt.	1-2	3-7	8-22	23-49
304245	2' x 4'	0.5 lb.	26.64	25.04	23.28	21.60
Item #	Size	Product Wt.	1	2-3	4-9	10-22
304252	3' x 6'	1.25 lbs.	59.94	56.34	52.38	48.60
Item #	Size	Product Wt.	1-2	3-7	8-16	17-33
304255	4' x 6'	1.5 lbs.	75.12	69.84	64.80	58.08

USD MSRP (C)

Production Lead Time: 2 days from final proof approval

13 OZ. SCRIM VINYL BANNER

Versatile enough for both indoor and outdoor use, this single-sided banner is a top choice when it comes to value.

- See page 15 for popular finishing styles

13 oz. Scrim Vinyl Banner

Item #	Size	Product Wt.	1-2	3-7	8-22	23-49
304360	2' x 4'	1 lb.	28.24	25.84	23.28	21.60
Item #	Size	Product Wt.	1	2-3	4-9	10-22
304364	3' x 6'	2.5 lbs.	63.54	58.14	52.38	48.60
Item #	Size	Product Wt.	1	2-5	6-12	13-24
304367	4' x 8'	4 lbs.	103.36	93.12	86.40	77.44

USD MSRP (C)

Production Lead Time: 2 days from final proof approval

18 OZ. OPAQUE SCRIM VINYL BANNER

This banner is reinforced with scrim, making it extremely durable for outdoor use.

- See page 15 for popular finishing styles

18 oz. Opaque Scrim Vinyl Banner (Single-Sided)

Item #	Size	Product Wt.	1	2-3	4-9	10-22
304384	3' x 6'	2.5 lbs.	72.18	66.42	60.84	56.34
Item #	Size	Product Wt.	1	2-5	6-12	13-24
304387	4' x 8'	4 lbs.	118.08	108.16	100.16	90.56
Item #	Size	Product Wt.	1	2-4	5-9	10-19
304388	4' x 10'	5 lbs.	147.60	135.20	125.20	113.20

USD MSRP (C)

18 oz. Opaque Scrim Vinyl Banner (Double-Sided)

Item #	Size	Product Wt.	1-2	3-7	8-22	23-49
304470	2' x 4'	1 lb.	68.16	63.92	59.52	56.00
Item #	Size	Product Wt.	1	2-3	4-9	10-22
304472	3' x 6'	2.5 lbs.	153.36	143.82	133.92	126.00
Item #	Size	Product Wt.	1	2-5	6-12	13-24
304474	4' x 8'	4 lbs.	255.68	238.08	224.00	207.04

USD MSRP (C)

Production Lead Time: 2 days from final proof approval

9 OZ. MESH VINYL BANNER

This single-sided banner is made of breathable 60/40 mesh vinyl that can be used on breezy days.

- See page 15 for popular finishing styles

9 oz. Mesh Vinyl Banner

Item #	Size	Product Wt.	1	2-4	5-14	15-33
304411	2' x 6'	1.25 lbs.	48.12	44.40	40.56	37.56
Item #	Size	Product Wt.	1	2-3	4-9	10-22
304414	3' x 6'	2 lbs.	72.18	66.60	60.84	56.34
Item #	Size	Product Wt.	1	2-5	6-12	13-24
304417	4' x 8'	3 lbs.	118.40	108.16	100.16	90.56

USD MSRP (C)

Production Lead Time: 2 days from final proof approval

SUPER POLY KNIT FABRIC BANNER

This lightweight fabric banner allows wind to pass through, making it great for outdoor use.

- Full-color dye-sublimated graphics
- See below for popular finishing styles

Super Poly Knit Fabric Banner

Item #	Size	Product Wt.	1-2	3-7	8-22	23-49
304420	2' x 4'	0.21 lb.	61.52	54.88	49.20	44.24
Item #	Size	Product Wt.	1	2-3	4-9	10-22
304424	3' x 6'	0.48 lb.	138.42	123.48	110.70	99.54
Item #	Size	Product Wt.	1	2-5	6-12	13-24
304427	4' x 8'	0.86 lb.	219.52	196.80	176.96	155.84

USD MSRP (C)

Production Lead Time: 4 days from final proof approval



2' x 4' banner
with pole pockets



SATIN BANNER

Satin fabric has a formal appearance and an elegant finish, making it a crowd-pleaser at indoor events.

- Full-color dye-sublimated graphics
- See below for popular finishing styles

Satin Banner

Item #	Size	Product Wt.	1-2	3-7	8-22	23-49
304740	2' x 4'	0.2 lb.	48.72	45.04	41.84	39.36
Item #	Size	Product Wt.	1	2-3	4-9	10-22
304741	3' x 6'	0.45 lb.	109.62	101.34	94.14	88.56
Item #	Size	Product Wt.	1	2-5	6-12	13-24
304744	4' x 8'	0.8 lb.	180.16	167.36	157.44	146.24

USD MSRP (C)

Production Lead Time: 4 days from final proof approval



4' x 8' banner with grommets

POPULAR BANNER FINISHING STYLES

Additional finishing styles available online.

Heat Weld

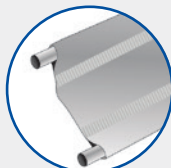
Single-sided vinyl banners only



HEAT WELD HEM
& GROMMETS



HEAT WELD HEM,
ROPE & GROMMETS



HEAT WELD &
3" POLE POCKETS

Sewn

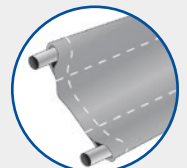
Fabric and double-sided vinyl banners



SEWN HEM
ONLY



SEWN HEM &
GROMMETS



3" POLE
POCKETS

QUICK & EASY ONLINE BANNER ORDERING!

Visit our website for accurate quotes
and hassle-free banner ordering 24/7

Under the Banners & Flags tab, click the Custom Banner option.

Accurate Quoting • Large Quantities • Additional Finishing Styles • Custom Sizes



Setup fee: \$20.00(G); no setup fee on orders placed via our website. View current graphic templates, assembly videos and instructions on our website.

showdowndisplays.com

10.5' Razor

Pole pocket is made of the same fabric as the flag.

Plastic-capped ends provide a clean finish.

GOOD

Value Sail Signs

- Vibrant dye sublimation on super poly knit fabric
- Value hardware
- Value spike or Value cross base

9' Razor

Pole pocket is made of high tensile strength elastic polyester binding.

Rubber-tipped ends on the scissor base prevent scratching.

BETTER

Streamline Sail Signs

- Vibrant dye sublimation on super poly knit fabric
- Premium hardware
- Ground spike, scissor base or three-legged base

9' Razor

Pole pocket is made of high tensile strength elastic polyester binding.

Rubber-tipped ends on the scissor base prevent scratching.

BEST

Premium Sail Signs

- Vibrant dye sublimation on super poly knit fabric
- Premium hardware
- Ground spike, scissor base or three-legged base

MAXIMIZE THE IMPACT OF YOUR MESSAGE

FRONT & BACK

Single-Sided

Reverse image shows through back.

Artwork is dye sublimated on super poly knit fabric.

FRONT & BACK

Double-Sided

Image on both sides with a block-out liner in between.

SAIL SIGN HARDWARE COMPARISON CHART

	POLE CONSTRUCTION	FLAG ATTACHMENT	CARRY CASE	HARDWARE WARRANTY
Value Hardware	<p>Channelled carbon composite overlay construction with low-gloss black paint finish.</p> <p>Double-reinforced carbon fiber pole segment ends.</p>	<p>A loop on the flag attaches to an adjustable hook on the pole.</p>	Sold separately	
Premium Hardware	<p>Uniform carbon composite overlay construction with high-gloss black paint finish.</p> <p>Polished aluminum collar pole segment ends and ergonomic, rubber-reinforced base grip.</p>	<p>Flag attaches to a fixed hook using a bungee cord.</p>		

Wind Test Assessment:
6'-11.5' to withstand winds up to 30 mph with use of water ballast or a ground spike in firm ground.
13'-17" to withstand winds up to 20 mph with use of water ballast or a ground spike in firm ground.
Flag Warranty: Flags used outdoors have a 90-day warranty. Flags used indoors have a 1-year warranty.

Disclaimer:
Wind rating conducted in a controlled environment. Outdoor products should be taken down if bad weather is likely. Wind gusts and heavy rain could reduce the wind resistance of these products.

SAIL SIGNS

Sail signs are built to move in the wind, making them truly hard to miss.

Value Teardrop Sail Sign

Description	Item #	1	2-5	6-11	12-24	Item #	1	2-5	6-11	12-24
6.5' Kit with Cross Base and Water Ballast	191611	151.00	146.00	139.00	134.00	191613	228.00	221.00	210.00	203.00
9.5' Kit with Cross Base and Water Ballast	191619	172.00	167.00	158.00	153.00	191621	261.00	253.00	240.00	232.00
13' Kit with Cross Base and Water Ballast	191627	226.00	219.00	208.00	201.00	191629	341.00	331.00	314.00	303.00
Kit Includes: Hardware with Specified Base and Flag (Does not include carry case)										USD MSRP (C)

Value Razor Sail Sign

Description	Item #	1	2-5	6-11	12-24	Item #	1	2-5	6-11	12-24
7.5' Kit with Cross Base and Water Ballast	191651	151.00	146.00	139.00	134.00	191653	228.00	221.00	210.00	203.00
10.5' Kit with Cross Base and Water Ballast	191659	172.00	167.00	158.00	153.00	191661	261.00	253.00	240.00	232.00
15' Kit with Cross Base and Water Ballast	191667	226.00	219.00	208.00	201.00	191669	341.00	331.00	314.00	303.00
Kit Includes: Hardware with Specified Base and Flag (Does not include carry case)										USD MSRP (C)

Streamline Teardrop Sail Sign

Description	Item #	1	2-5	6-11	12-24	Item #	1	2-5	6-11	12-24
6' Kit with Three-Legged Base and Water Ballast	191401	212.00	206.00	195.00	189.00	191409	293.00	284.00	270.00	261.00
8' Kit with Scissor Base and Water Ballast	191403	268.00	260.00	247.00	239.00	191411	362.00	351.00	333.00	322.00
11.5' Kit with Scissor Base and Water Ballast	191405	316.00	307.00	291.00	281.00	191413	449.00	436.00	413.00	400.00
15' Kit with Scissor Base and Water Ballast	191407	374.00	363.00	344.00	333.00	191415	542.00	526.00	505.00	489.00
Kit Includes: Hardware with Specified Base, Flag and Soft Carry Case										USD MSRP (C)

Streamline Razor Sail Sign

Description	Item #	1	2-5	6-11	12-24	Item #	1	2-5	6-11	12-24
7' Kit with Three-Legged Base and Water Ballast	191429	212.00	206.00	195.00	189.00	191437	293.00	284.00	270.00	261.00
9' Kit with Scissor Base and Water Ballast	191431	268.00	260.00	247.00	239.00	191439	362.00	351.00	333.00	322.00
13' Kit with Scissor Base and Water Ballast	191433	316.00	307.00	291.00	281.00	191441	449.00	436.00	413.00	400.00
17' Kit with Scissor Base and Water Ballast	191435	374.00	363.00	344.00	333.00	191443	542.00	526.00	505.00	489.00
Kit Includes: Hardware with Specified Base, Flag and Soft Carry Case										USD MSRP (C)

Premium Teardrop Sail Sign

Description	Item #	1	2-5	6-11	12-24	Item #	1	2-5	6-11	12-24
6' Kit with Three-Legged Base and Water Ballast	190979	238.00	231.00	219.00	212.00	190978	345.00	335.00	317.00	307.00
8' Kit with Scissor Base and Water Ballast	190763	294.00	285.00	270.00	262.00	190762	413.00	401.00	380.00	368.00
11.5' Kit with Scissor Base and Water Ballast	190765	343.00	333.00	316.00	305.00	190764	503.00	488.00	469.00	454.00
15' Kit with Scissor Base and Water Ballast	190767	398.00	386.00	370.00	358.00	190766	593.00	575.00	553.00	535.00
Kit Includes: Hardware with Specified Base, Flag and Soft Carry Case										USD MSRP (C)

Premium Razor Sail Sign

Description	Item #	1	2-5	6-11	12-24	Item #	1	2-5	6-11	12-24
7' Kit with Three-Legged Base and Water Ballast	190985	238.00	231.00	219.00	212.00	190984	345.00	335.00	317.00	307.00
9' Kit with Scissor Base and Water Ballast	190757	294.00	285.00	270.00	262.00	190756	413.00	401.00	380.00	368.00
13' Kit with Scissor Base and Water Ballast	190759	343.00	333.00	316.00	305.00	190758	503.00	488.00	469.00	454.00
17' Kit with Scissor Base and Water Ballast	190761	398.00	386.00	370.00	358.00	190760	593.00	575.00	553.00	535.00
Kit Includes: Hardware with Specified Base, Flag and Soft Carry Case										USD MSRP (C)

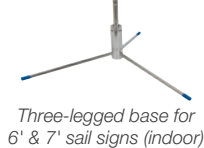
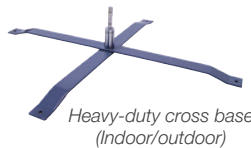
Product Size
Sizes Vary

Finished Graphic Size
View Online Template

Production Lead Time: 4 days from final proof approval



SAIL SIGN ACCESSORIES



Sail Sign Accessories

Item #	Description	Product Wt.	1	2-5	6-11	12-24
190711	Heavy-Duty Cross Base	9 lbs.	76.00	73.70	69.90	67.60
190707	Scissor Base	7 lbs.	65.70	63.70	60.40	58.50
190714	3-Legged Base	1.25 lbs.	32.10	31.10	29.50	28.60
191590	Value Spike*	2 lbs.	31.60	30.70	29.10	28.10
191591	Value Cross Base*	2.8 lbs.	31.60	30.70	29.10	28.10
190706	Ground Spike	2 lbs.	43.10	41.80	39.70	38.40
190708	Round Water Ballast	0.5 lb.	43.50	42.20	40.00	38.70
190710	Square Water Ballast	0.5 lb.	43.50	42.20	40.00	38.70
190709	Vehicle Base	4.5 lbs.	65.70	63.70	60.40	58.50
220082	Universal Product Case	7 lbs.	124.00	120.00	117.00	115.00
USD MSRP (C)						



*Covered by a 90-day product warranty

Hardware Lead Time: Ships same day when ordered before 2 p.m. Central

Setup fee: \$20.00(G); no setup fee on orders placed via our website. View current graphic templates, assembly videos and instructions on our website.



NYLON FLAG

Lightweight and fade resistant, our nylon flags come in a variety of sizes and are perfect for indoor and outdoor use.

- Constructed of 200 denier nylon
- Standard finishing includes canvas header and brass grommets
- Four rows of lock-stitching provide extra reinforcement on the fly end of the flag
- Single-sided and double-sided options available
- Flags that are 8' x 12' and larger contain lap seams
- Custom sizes available (call for quote; restrictions may apply)
- Flags used outdoors have a 90-day warranty; flags used indoors have a 1-year warranty



Rectangle Nylon Flag (Single-Sided)

Item #	Size	Product Wt.	1	2-5	6-11	12-24
304530	8" X 12"	0.25 lb.	36.00	32.40	28.80	25.20
304531	12" X 18"	0.25 lb.	40.00	36.00	32.00	28.00
304532	16" X 24"	0.25 lb.	44.00	39.60	35.20	30.80
304533	2' X 3'	0.3 lb.	50.00	45.00	40.00	35.00
304534	2.5' X 4'	0.4 lb.	70.00	63.00	56.00	49.00
304535	3' X 5'	0.5 lb.	80.00	72.00	64.00	56.00
304536	4' X 6'	0.7 lb.	110.00	99.00	88.00	77.00
304537	5' X 8'	1 lb.	160.00	152.00	144.00	136.00
304538	6' X 10'	1.6 lbs.	230.00	218.50	207.00	195.50
304539	8' X 12'	2.9 lbs.	390.00	370.50	351.00	331.50
304540	10' X 15'	4.6 lbs.	650.00	617.50	585.00	552.50
304541	12' X 18'	6.5 lbs.	950.00	902.50	855.00	807.50
304542	15' X 25'	13.25 lbs.	1400.00	1330.00	1260.00	1190.00
304543	20' X 30'	21 lbs.	2500.00	2375.00	2250.00	2125.00
304544	20' X 38'	26.6 lbs.	3000.00	2850.00	2700.00	2550.00
304545	25' X 40'	35 lbs.	3800.00	3610.00	3420.00	3230.00
304546	30' X 50'	52.5 lbs.	5300.00	5035.00	4770.00	4505.00
304547	30' X 60'	63 lbs.	6500.00	6175.00	5850.00	5525.00

USD MSRP (C)

Single-Sided

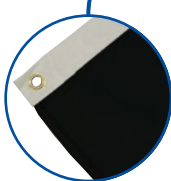


Single-sided flags are printed on one side; reverse image shows through the back.

Double-Sided (available online)



Double-sided flags have the image on both sides with a block-out liner in between.



All flags are finished with white canvas heading and brass grommets.

FABRIC FLAG

Easy to hang, this flag works with any standard flagpole.

- Best for outdoor use
- Single-sided and double-sided options available
- Artwork is dye sublimated on super poly knit fabric
- Double-sided flags feature two layers sewn together with a block-out liner in between
- Custom sizes available (call for quote; restrictions may apply)
- Flags used outdoors have a 90-day warranty; flags used indoors have a 1-year warranty



Fabric Flag

Item #	Size	Product Wt.	1	2-5	6-11	12-24
300003	2' x 3' Flag Single-Sided	0.25 lb.	50.00	44.00	39.00	35.00
300018	2' x 3' Flag Double-Sided	0.5 lb.	100.00	87.00	78.00	69.00
300007	3' x 5' Flag Single-Sided	0.5 lb.	80.00	72.00	67.00	62.00
300019	3' x 5' Flag Double-Sided	1.25 lbs.	160.00	144.00	134.00	124.00
300011	4' x 6' Flag Single-Sided	1 lb.	110.00	99.00	92.00	85.00
300020	4' x 6' Flag Double-Sided	2 lbs.	220.00	198.00	184.00	171.00
300015	5' x 8' Flag Single-Sided	1 lb.	148.00	141.00	134.00	127.00
300021	5' x 8' Flag Double-Sided	3.25 lbs.	296.00	282.00	268.00	254.00

USD MSRP (C)

Single-sided flags are printed on one side; reverse image shows through the back.



SPIN 'N WIN PRIZE WHEEL PLUS

This prize wheel provides extra messaging space above and below the wheel to familiarize showgoers with your brand, logo or campaign.

- Powder-coated steel legs
- All graphic panels can be custom printed with your design
- Includes twelve removable prize panels, one center disc panel, a top "banner" panel and a bottom "banner" panel
- US Patent #9981179



Spin 'N Win Prize Wheel Plus

Item #	Description	1	2-5	6-11	12-24
280084	Kit	666.40	648.10	631.50	610.30
Kit Includes: Hardware, Graphic Panels and Soft Carry Case				USD MSRP (C)	

Product Size	Finished Graphic Size	Product Wt.	Media
Tabletop: 31.75"W x 43.5"H x 16.5"D	View Online Template	18 lbs.	Styrene
Floor: 31.75"W x 76"H x 30.5"D			

Production Lead Time: 2 days from final proof approval



Need a Tabletop Game?

Simply remove the leg extensions to transform this prize wheel into a game suitable for tabletop use.

VALUE BAG TOSS GAME

The Value Bag Toss game packs a whole lot of fun into a budget-friendly package.

- Two game boards clasp together into a single unit that can be easily transported using the convenient carry handle
- Game boards are constructed of sturdy nylon polymer
- Detachable legs keep the game boards propped up at an angle
- Artwork is printed on a repositionable, adhesive-backed media with a textured finish
- 90-day warranty on graphic decals



Value Bag Toss Game

Item #	Description	1	2-5	6-11	12-24
280130	Kit	161.00	159.00	156.00	154.00
Kit Includes: Hardware, 8 Bean Bags and 2 Decals				USD MSRP (C)	

Product Size	Finished Graphic Size	Product Wt.	Media
Folded: 24.75"W x 3.125"H x 33.375"D	19.875"W x 31.6875"H	15.5 lbs.	Surface Grip
(1) Open: 21.5"W x 10.125"H x 33.625"D	(View Online Template)		

Production Lead Time: 3 days from final proof approval



Removable decals come applied to the game board.



Bean bags can be stored inside elastic pouches so they don't get left behind.



Sliding scorekeeper on the legs counts from 00 to 21.

Setup fee: \$20.00(G); no setup fee on orders placed via our website. View current graphic templates, assembly videos and instructions on our website.



STANDARD 10' TENT

This popular tent strikes a perfect balance between cost effectiveness and portability.

- 1 mm pebble powder-coated steel frame
- 1.125" square legs
- ABS nylon joints
- Crank-up canopy creates a taut, clean peak
- Stake kit and wheeled carry case included
- 10' canopy available in eight colors (see below)



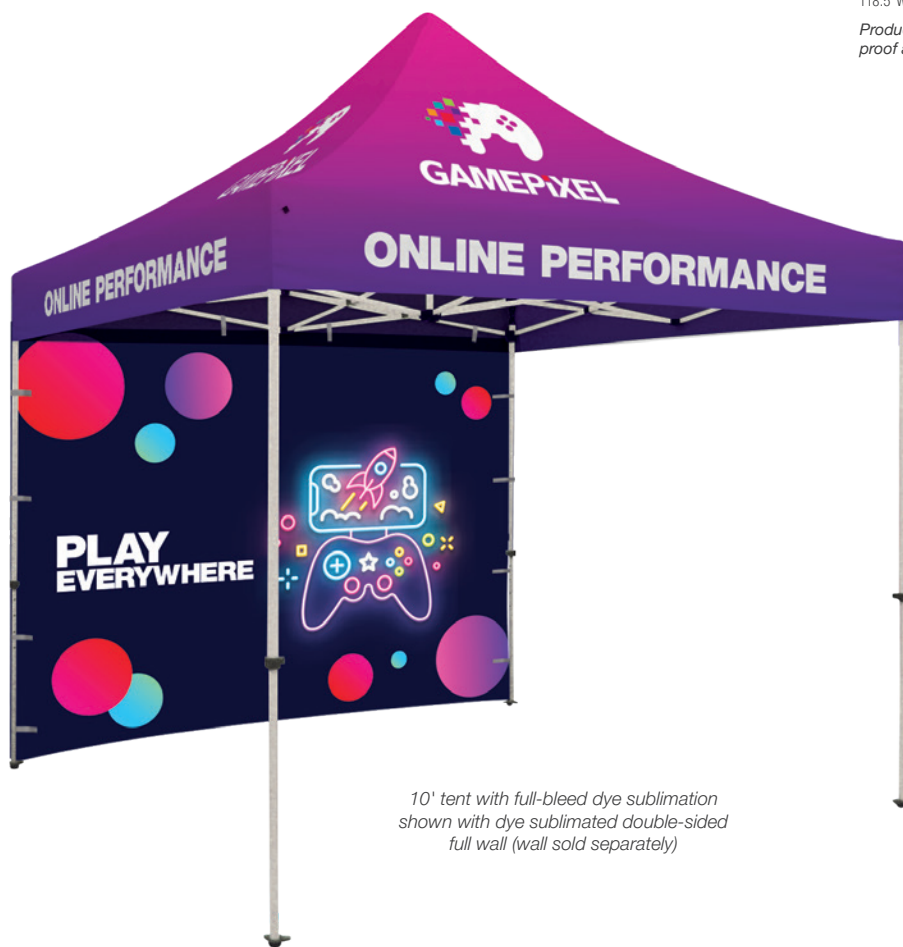
Standard 10' Tent

Item #	Description	1	2-5	6-11	12-24
240611	Full-Color Imprint Kit (1 Location)	569.00	547.00	530.00	508.00
240612	Full-Color Imprint Kit (2 Locations)	643.00	619.00	600.00	576.00
240614	Full-Color Imprint Kit (4 Locations)	791.00	763.00	740.00	712.00
240618	Full-Color Imprint Kit (8 Locations)	1087.00	1051.00	1020.00	984.00
240619	Dye Sublimation Kit	1213.00	1177.00	1146.00	1110.00

USD MSRP (C)

Product Size 118.5"W x 127.5"H x 118.5"D Imprint Graphic Size Peak: 44"W x 24"H; Valance: 60"W x 8"H Dye Sub Graphic Size View Online Template Product Wt. 51.5 lbs.

Production Lead Time: 3 days for full-color imprint / 7 days for dye sublimation from final proof approval



10' tent with full-bleed dye sublimation shown with dye sublimated double-sided full wall (wall sold separately)



Easy-Glide Tent Feet allow the tent frame to slide on dirt and grass, preventing the legs from catching. US Patent #D760857



Legs feature plastic push buttons for pinch-free height adjustments.

Tent Features & Benefits



Sets up in minutes.



Adjust tent height with the push of a button.



Crank-up canopy creates a taut, clean peak.



Secure tent to the ground with stake kit.



Collapses easily to store in soft case with wheels.

10' Tent Stock Canopy Colors



PMS colors are for reference only and may vary slightly from actual color.

Setup fee: \$20.00(G); no setup fee on orders placed via our website. View current graphic templates, assembly videos and instructions on our website.

DELUXE 6' TENT

6' tents are compact enough for use indoors or in tight spaces.

- 1 mm pebble powder-coated steel frame
- 1.25" square legs
- ABS glass-filled nylon joints
- Crank-up canopy creates a taut, clean peak
- Stake kit and wheeled carry case included
- Canopy available in black, red, royal blue and white



Deluxe 6' Tent

Item #	Description	1	2-5	6-11	12-24
240801	Full-Color Imprint Kit (1 Location)	614.00	602.00	590.00	568.00
240802	Full-Color Imprint Kit (2 Locations)	688.00	674.00	660.00	636.00
240804	Full-Color Imprint Kit (4 Locations)	836.00	818.00	800.00	772.00
240808	Full-Color Imprint Kit (8 Locations)	1132.00	1106.00	1080.00	1044.00
240809	Dye Sublimation Kit	1258.00	1232.00	1206.00	1170.00

Product Size: 72"W x 109"-121.5"H x 72"D Imprint Graphic Size: Peak: 24"W x 20"H; Valance: 50"W x 8"H Dye Sub Graphic Size: View Online Template Product Wt.: 48.5 lbs. USD MSRP (C)

Production Lead Time: 3 days for full-color imprint / 7 days for dye sublimation from final proof approval



Legs feature levers for easy height adjustments.



Easy-Glide Tent Feet allow the tent frame to slide on dirt and grass, preventing the legs from catching. US Patent #D760857



6' tent with full-color imprint (8 locations)

PREMIUM 10' & 20' TENTS

These Premium tents feature a strong aluminum frame with sturdy hexagon-shaped legs.

- 0.8 mm anodized aluminum frame
- ABS glass-filled nylon joints
- 1.75" diameter hexagon legs for strength
- Crank-up canopy creates a taut, clean peak
- Stake kit and wheeled carry case included
- 10' canopy available in eight colors (see below)
- 24-Hour and 48-Hour Quick Ship options available for 10' tents; see website for details



Premium 10' Tent

Item #	Description	1	2-5	6-11	12-24
240631	Full-Color Imprint Kit (1 Location)	809.00	787.00	770.00	748.00
240632	Full-Color Imprint Kit (2 Locations)	883.00	859.00	840.00	816.00
240634	Full-Color Imprint Kit (4 Locations)	1031.00	1003.00	980.00	952.00
240638	Full-Color Imprint Kit (8 Locations)	1327.00	1291.00	1260.00	1224.00
240639	Dye Sublimation Kit	1453.00	1417.00	1386.00	1350.00

USD MSRP (C)

Premium 10' x 20' Tent

Item #	Description	1	2-5	6-11	12-24
240571	Full-Color Imprint Kit (1 Location)	1039.00	1017.00	995.00	963.00
240572	Full-Color Imprint Kit (2 Locations)	1113.00	1089.00	1065.00	1031.00
240574	Full-Color Imprint Kit (4 Locations)	1261.00	1233.00	1205.00	1167.00
240578	Full-Color Imprint Kit (8 Locations)	1557.00	1521.00	1485.00	1439.00
240582	Full-Color Imprint Kit (12 Locations)	1853.00	1809.00	1765.00	1711.00
240583	Dye Sublimation Kit	1990.00	1946.00	1902.00	1848.00

USD MSRP (C)

Description: 10' Tent Product Size: 118"W x 126.75"-139.25"H x 118"D Imprint Graphic Size: Peak: 44"W x 24"H; Valance: 60"W x 8"H Dye Sub Graphic Size: View Online Template Product Wt.: 52 lbs.
10' x 20' Tent Product Size: 234.5"W x 126.75"-139.25"H x 118.25"D Peak: 44"W x 24"H; Valance: 60"W x 8"H View Online Template Product Wt.: 92 lbs.

Production Lead Time: 3 days for full-color imprint / 7 days for dye sublimation from final proof approval



10' tent with full-bleed dye sublimation

20' tent with full-bleed dye sublimation



Easy-Glide Tent Feet allow the tent frame to slide on dirt and grass, preventing the legs from catching. US Patent #D760857



Legs feature levers for easy height adjustments.



UPTOWN & UPTOWN ACCENT A-FRAME

These A-frames present your message with a touch of class.

- Recommended for indoor use
- Frames are constructed of high-grade aluminum with a silver matte finish
- Foot pegs prevent the A-frame from scratching floors or slipping
- Signboards constructed of rigid PVC board



Uptown A-Frame

Item #	Description	1	2-5	6-11	12-24
263190	40" Kit	270.00	262.00	250.00	242.00
263192	45" Kit	298.00	289.00	276.00	267.00
Kit Includes: Hardware, 2 Single-Sided Signboards and 1 Double-Sided Rider Panel (artwork can be different for each side)					USD MSRP (C)
Description	Product Size	Finished Graphic Size		Product Wt.	Media
40"	18.75"W x 40.875"H x 29"D	Signboard: 16.5"W x 23.375"H Rider Panel: 18.2"W x 7"H		15.5 lbs.	Rigid PVC Board
45"	26.625"W x 45.375"H x 32.625"D	Signboard: 23.375"W x 33"H Rider Panel: 25.1"W x 7"H		24.25 lbs.	Rigid PVC Board

Uptown Accent A-Frame

Item #	Description	1	2-5	6-11	12-24
263196	Kit	324.00	315.00	300.00	291.00
Kit Includes: Hardware, 2 Single-Sided Signboards, 2 Single-Sided Accent Panels and 1 Double-Sided Rider Panel (artwork can be different for each side)					USD MSRP (C)
Description	Product Size	Finished Graphic Size		Product Wt.	Media
Kit	25.625"W x 50.875"H x 35.75"D	Signboard: 23.375"W x 33"H Accent Panel: 25.25"W x 8.25"H Rider Panel: 25.1"W x 7"H		30.5 lbs.	Rigid PVC Board

Production Lead Time: 3 days from final proof approval



Accent



45"



40"



Simpo Square

Simpo Sign II

Chalkboard lets you display personalized, hand-written messages (chalk markers recommended; not included).



Signicade Deluxe Chalkboard



Signicade Deluxe

SIGNICADE AND SIMPO A-FRAMES

With multiple sizes to choose from, these A-frames fit a variety of spaces.

- Maintenance-free and weather-resistant
- Folds flat for transport or storage



Simpo Square A-Frame

Item #	Description	1	2-5	6-11	12-24
210274	Single-Sided Kit	110.00	108.00	104.00	102.00
210275	Double-Sided Kit	119.00	117.00	113.00	110.00
Kit Includes: Hardware and 2 Single- or Double-Sided Signboards		USD MSRP (C)			

Product Size	Finished Graphic Size	Product Wt.	Media
22"W x 24.625"H x 21"D	20"W x 20"H	6.25 lbs.	4 mm Corrugated Plastic

Frame Color ☐ White

Simpo Sign II A-Frame

Item #	Description	1	2-5	6-11	12-24
210091	Single-Sided Kit	206.00	200.00	191.00	185.00
210092	Double-Sided Kit	216.00	210.00	201.00	195.00
Kit Includes: Hardware and 2 Single- or Double-Sided Signboards		USD MSRP (C)			

Product Size	Finished Graphic Size	Product Wt.	Media
24"W x 36.75"H x 21.5"D	22"W x 28"H	10.5 lbs.	4 mm Corrugated Plastic

Frame Color ☐ White

Signicade Deluxe A-Frame

Item #	Description	1	2-5	6-11	12-24
210121	Single-Sided Kit	189.00	183.00	175.00	169.00
210122	Double-Sided Kit	202.00	196.00	190.00	184.00
210280	Chalkboard* Kit	241.00	235.00	224.00	218.00
Kit Includes: Black or White Hardware and 2 Single- or Double-Sided Signboards		USD MSRP (C)			

*Chalkboard is single-sided and unprinted

Product Size	Finished Graphic Size	Product Wt.	Media
27"W x 38.5"H x 19"D	24"W x 36"H	21 lbs. / 25 lbs.	4 mm Corrugated Plastic Chalkboard Laminated Rigid PVC Board

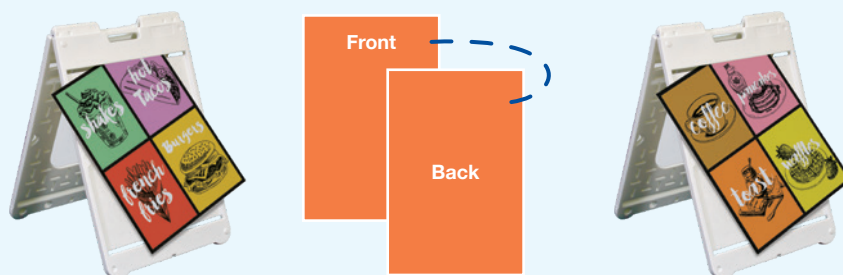
Frame Colors ☒ Black ☐ White

Production Lead Time: 3 days from final proof approval



Double-Sided Signboards - One Signboard, Two Sides.

Double-sided signboards have your artwork printed on both sides, making each signboard reversible.



Plastic base won't rust, making it great for outdoor use.



Convenient molded handle makes it easy to move.

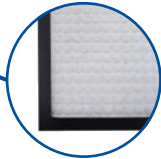


Frames can be filled with water or sand for stability.



Signboards are easy to swap out to accommodate frequent message changes.

Setup fee: \$20.00(G); no setup fee on orders placed via our website. View current graphic templates, assembly videos and instructions on our website.



Constructed of 65 mil nitrile rubber with needle-punched polyester carpet.

STORM MAT

This water-absorbent mat makes a great first impression when placed in entryways.

- Absorbs up to 1.5 gallons of water per square yard
- Easy to clean using a vacuum, steam cleaner or hose
- UV-resistant and treated with Stainstopper™
- Mat sizes are not exact; allow 3-5% size variance
- Not eligible for Rush Service



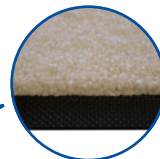
Storm Mat

Item #	Description	Product Wt.	1	2-5	6-10	11-25
259030	2' x 3' Mat	4 lbs.	320.00	237.00	203.00	196.00
259031	3' x 5' Mat	10 lbs.	364.00	269.00	231.00	223.00
259032	4' x 6' Mat	14 lbs.	462.00	342.00	293.00	283.00
USD MSRP (C)						

Description	Product Size	Finished Graphic Size
2' x 3'	22" x 35"	19" x 32"
3' x 5'	35" x 59"	32" x 56"
4' x 6'	45" x 69"	42" x 66"

Item has limited number of available colors (56). We cannot guarantee color matching. Test strip/match print/test grid not available.

Production Lead Time: 7 days from final proof approval



Mat features chemical-resistant plush carpet.

FLOOR HUGGER MAT

Put quality designs right at your feet. The Floor Hugger mat features a nylon yarn surface with black rubber borders and backing.

- Treated with Stainstopper™ and static dissipative
- Will not crack or curl
- Mat sizes are not exact; allow 3-5% size variance
- Not eligible for Rush Service



Floor Hugger Mat

Item #	Description	Product Wt.	1	2-5	6-10	11-25
259000	3' x 5' Mat	8 lbs.	272.00	201.00	172.00	167.00
259001	3' x 10' Mat	16 lbs.	447.00	389.00	335.00	324.00
259002	4' x 6' Mat	12 lbs.	348.00	305.00	261.00	252.00
USD MSRP (C)						

Description	Product Size	Finished Graphic Size
3' x 5'	35" x 59"	33" x 57"
3' x 10'	35" x 119"	33" x 117"
4' x 6'	45" x 69"	43" x 67"

Item has limited number of available colors (150). We cannot guarantee color matching. Test strip/match print/test grid not available.

Production Lead Time: 7 days from final proof approval



Covers are curved and open along the corners.



Hook-and-loop fasteners secure the cover.

BARRICADE COVER

Transform any event barricade into a prime advertising opportunity.

- Covers the full barricade (barricade not included)
- Maximize your impact by featuring a different design on each side
- Available in two-way stretch fabric or Titan™ 18 oz. opaque scrim vinyl
- Custom sizes and other media options available (call for quote; restrictions may apply)
- Barricade Covers used outdoors have a 90-day warranty; Barricade Covers used indoors have a 1-year warranty



Barricade Cover

Item #	Description	Product Wt.	1	2-5	6-11	12-24
302090	3' x 7' Two-Way Stretch Fabric Cover	1.8 lbs.	250.00	238.00	225.00	213.00
302091	3' x 7' 18 oz. Opaque Scrim Vinyl Cover	3.8 lbs.	239.00	227.00	215.00	203.00
302092	3' x 8' Two-Way Stretch Fabric Cover	2.2 lbs.	260.00	247.00	234.00	221.00
302093	3' x 8' 18 oz. Opaque Scrim Vinyl Cover	4.4 lbs.	250.00	238.00	225.00	213.00
302094	3' x 10' Two-Way Stretch Fabric Cover	2.8 lbs.	272.00	258.00	245.00	231.00
302095	3' x 10' 18 oz. Opaque Scrim Vinyl Cover	5.4 lbs.	260.00	247.00	234.00	221.00
USD MSRP (C)						

Production Lead Time: 3 days from final proof approval

Setup fee: \$20.00(G); no setup fee on orders placed via our website. View current graphic templates, assembly videos and instructions on our website.

CANVAS SIGNBOARD

Turn your favorite photos and memories into beautiful decoration pieces with our hanging canvas signboards.

- Print is gallery-wrapped around frame to maximize graphic space
- Artwork is printed with UV-protected ink on durable Canvas fabric
- Wood frames are sourced from domestically sustainable pine forests
- Custom sizes available (call for quote; restrictions may apply)



Canvas Signboard

Item #	Description	1	2-5	6-11	12-24
325150	11" x 14"	82.00	78.00	74.00	70.00
325153	12" x 36"	103.00	98.00	93.00	88.00
325156	16" x 20"	103.00	98.00	93.00	88.00
325159	18" x 24"	113.00	107.00	102.00	96.00
325162	24" x 36"	155.00	147.00	140.00	132.00
325165	30" x 40"	185.00	176.00	167.00	157.00
325168	24" x 60"	216.00	205.00	194.00	184.00
325171	36" x 36"	185.00	176.00	167.00	157.00
325174	36" x 48"	216.00	205.00	194.00	184.00
325177	36" x 60"	247.00	235.00	222.00	210.00

USD MSRP (C)

Description	Product Size	Finished Graphic Size	Product Wt.	Media
11" x 14"	14"W x 11"H x 1.5"D	11" x 14"	1.5 lbs.	Canvas Fabric
12" x 36"	36"W x 12"H x 1.5"D	12" x 36"	3 lbs.	Canvas Fabric
16" x 20"	20"W x 16"H x 1.5"D	16" x 20"	2.5 lbs.	Canvas Fabric
18" x 24"	24"W x 18"H x 1.5"D	18" x 24"	2.5 lbs.	Canvas Fabric
24" x 36"	36"W x 24"H x 1.5"D	24" x 36"	5 lbs.	Canvas Fabric
30" x 40"	40"W x 30"H x 1.5"D	30" x 40"	7 lbs.	Canvas Fabric
24" x 60"	60"W x 24"H x 1.5"D	24" x 60"	6 lbs.	Canvas Fabric
36" x 36"	36"W x 36"H x 1.5"D	36" x 36"	7 lbs.	Canvas Fabric
36" x 48"	48"W x 36"H x 1.5"D	36" x 48"	7.5 lbs.	Canvas Fabric
36" x 60"	60"W x 36"H x 1.5"D	36" x 60"	8 lbs.	Canvas Fabric



Canvas is hand-stretched over a wood frame.



18" x 24"

GLOSSY ALUMINUM SIGNBOARD

Add some flair to your art by showing it off on a sleek and modern-looking aluminum sign.

- Perfect for use as plaques, signage, or home décor
- Scratch-resistant for long-term use
- Aluminum with white basecoat make colors pop
- Available with installed Shadow Mount or as signboard only
- Signboard is printed single-sided
- No assembly required



Glossy Aluminum Signboard

Item #	Description	Product Wt.	1	2-5	6-11	12-24
264200	8" x 8" Signboard	0.2 lb.	17.00	16.70	16.20	15.60
264201	8" x 8" Signboard with Shadow Mount	0.4 lb.	22.00	21.60	20.90	20.20
264202	8" x 10" Signboard	0.25 lb.	20.00	19.60	19.00	18.40
264203	8" x 10" Signboard with Shadow Mount	0.5 lb.	25.00	24.50	23.80	23.00
264204	12" x 12" Signboard	0.4 lb.	29.00	28.40	27.60	26.70
264205	12" x 12" Signboard with Shadow Mount	0.6 lb.	34.00	33.30	32.30	31.30
264206	11" x 14" Signboard	0.45 lb.	42.00	41.20	39.90	38.60
264207	11" x 14" Signboard with Shadow Mount	0.65 lb.	47.00	46.10	44.70	43.20
264208	12" x 18" Signboard	0.6 lb.	49.00	48.00	46.60	45.10
264209	12" x 18" Signboard with Shadow Mount	0.8 lb.	56.50	55.40	53.70	52.00
264210	16" x 16" Signboard	0.7 lb.	41.00	40.20	39.00	37.70
264211	16" x 16" Signboard with Shadow Mount	0.9 lb.	48.50	47.50	46.10	44.60
264212	16" x 20" Signboard	0.8 lb.	65.00	63.70	61.80	59.80
264213	16" x 20" Signboard with Shadow Mount	2.2 lbs.	72.50	71.10	68.90	66.70
264214	20" x 24" Signboard	1.2 lbs.	94.00	92.10	89.30	86.50
264215	20" x 24" Signboard with Shadow Mount	2.6 lbs.	101.50	99.50	96.40	93.40
264216	20" x 30" Signboard	1.8 lbs.	120.00	117.60	114.00	110.40
264217	20" x 30" Signboard with Shadow Mount	3.2 lbs.	127.50	125.00	121.10	117.30
264218	24" x 36" Signboard	2.6 lbs.	210.00	202.00	193.00	185.00
264219	24" x 36" Signboard with Shadow Mount	4 lbs.	218.00	209.00	201.00	192.00

USD MSRP (C)



Hidden Shadow Mount hardware lets you hang your art on the wall like a picture frame.



Finished with rounded corners.



20" x 24"

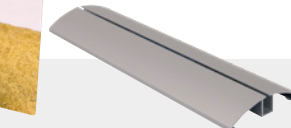
16" x 16" signboard with 12" stand

Add-On

Glossy Aluminum Signboard Stand

Item #	Description	Product Wt.	1	2-5	6-11	12-24
264092	8" Stand	0.2 lb.	12.50	12.30	11.90	11.50
264093	12" Stand	0.4 lb.	18.00	17.60	17.10	16.60

8" Stand holds up to a 12" x 12" aluminum signboard.
12" Stand holds up to a 16" x 16" aluminum signboard.



This stand features a satin finish and turns your sign into a freestanding display.



12-Quad Classic



Graphic panels are finished with white stitching.



Shelf has rounded corners and supports up to 15 lbs.



Deluxe GeoMetrix pegs hold up to six panels each.

DELUXE GEOMETRIX DISPLAY

A strong, durable frame supports multiple graphic panels and shelves so you have countless options for setting up a creative display.

- Setup and teardown can be done in seconds
- Artwork is dye sublimated on polyester double knit
- Aluminum frame with nylon plastic hubs
- Additional kits and graphic panel kits available online
- US Patent #9214104



Deluxe GeoMetrix Displays

Item #	Description	1	2-5	6-11	12-24
342010	3-Quad Tower Kit	620.00	610.00	595.00	585.00
342004	9-Quad Header Kit	1360.00	1330.00	1300.00	1270.00
342000	12-Quad Classic Kit	1605.00	1575.00	1545.00	1515.00

Kit Includes: Frame, Graphic Panels, Internal Shelf(s) and Soft Carry Case USD MSRP (C)
Shelves do not fit in provided soft carry case.
See website for shelf soft carry case.

Description	Product Size	Finished Graphic Size	Product Wt.	Media
3-Quad Tower	31.25"W x 89.5"H x 13"D	View Online Template	11 lbs.	Polyester Double Knit
9-Quad Header	90"W x 89.5"H x 13"D	View Online Template	27 lbs.	Polyester Double Knit
12-Quad Classic	118"W x 89.5"H x 13"D	View Online Template	30.5 lbs.	Polyester Double Knit

Production Lead Time: 4 days from final proof approval



3-Quad Tower



9-Quad Header



Ultimate LED Double Light Kit

Item #	1	2-5	6-11	12-24
150121	270.00	260.00	255.00	245.00

Kit Includes: Lights, Clamps, Clips, USB Adapter and Soft Carry Case USD MSRP (C)



Deluxe GeoMetrix Internal Shelves

Item #	Description	1	2-5	6-11	12-24
338050	Internal Shelf	111.00	109.00	106.00	102.00
338068	Clear Internal Shelf	118.00	114.00	111.00	107.00

Internal shelves support up to 15 lbs. USD MSRP (C)



3' with wrap graphic panel

10' with face graphic panel

20' with wrap graphic panel

SPLASH DISPLAY

This pop-up display transforms from a compact unit to an impressive backdrop in minutes.

- Graphic panels available in polyester knit or block-out fabric
- Hook-and-loop fasteners make graphic panel installation simple
- Aluminum frame with nylon plastic hubs
- Additional sizes available online
- US Patent #9214104



Splash Straight Floor Display

Item #	Description	Product Wt.	1	2-5	6-11	12-24
341040	3' Polyester Knit Face Kit	9.4 lbs.	395.00	380.00	365.00	350.00
342200	3' Block-Out Fabric Face Kit	9.5 lbs.	485.00	470.00	455.00	440.00
341041	3' Polyester Knit Wrap Kit	10.25 lbs.	475.00	460.00	445.00	430.00
342201	3' Block-Out Fabric Wrap Kit	10.25 lbs.	560.00	540.00	520.00	500.00
Kit Includes: Frame, Graphic Panel and Soft Carry Case			USD MSRP (C)			
341008	10' Polyester Knit Face Kit	23.75 lbs.	1170.00	1150.00	1130.00	1115.00
342212	10' Block-Out Fabric Face Kit	24.5 lbs.	1250.00	1230.00	1210.00	1190.00
341009	10' Polyester Knit Wrap Kit	24.75 lbs.	1365.00	1345.00	1325.00	1310.00
342213	10' Block-Out Fabric Wrap Kit	26 lbs.	1440.00	1420.00	1400.00	1380.00
Kit Includes: Frame, Graphic Panel and Soft Carry Case			USD MSRP (C)			
341029	20' Polyester Knit Wrap Kit	47.75 lbs.	2155.00	2125.00	2095.00	2065.00
342216	20' Block-Out Fabric Wrap Kit	49 lbs.	2215.00	2185.00	2155.00	2125.00
20' Kits Include: 2 Frames, Graphic Panel and 2 Soft Carry Cases			USD MSRP (C)			

Description	Product Size	Finished Graphic Size
3'	31"W x 89.5"H x 12.25"D	View Online Template
10'	119"W x 89.5"H x 12.25"D	View Online Template
20'	237"W x 89.5"H x 12.25"D	View Online Template

Production Lead Time: 3 days from final proof approval

Kit Options



Face Graphic Kit
Graphic panel covers the front of the frame; excludes 20' Splash.



Wrap Graphic Kit
Graphic panel covers the front and two sides of the frame. Back of the frame is not covered.

Block-Out Fabric

Block-out fabric is designed to prevent light from showing through the display. It is a good option for brightly lit areas.



Setup fee: \$20.00(G); no setup fee on orders placed via our website. View current graphic templates, assembly videos and instructions on our website.

FLOOR DISPLAYS

EUROFIT WALLS

The ever-expanding EuroFit line offers many elegant and versatile display solutions.

- Artwork is vibrantly dye sublimated on polyester knit
- Hinge together several separate EuroFit displays with the EuroFit Connector
- Create modular layouts with limitless possibilities
- More options available online

1 YEAR
PRODUCT
WARRANTY



EuroFit Features & Benefits



Joints are labeled for step-by-step frame assembly.



Push-button connectors make assembly easy.



Select displays feature a heavy-duty zipper that secures the graphic cover.



US Patent
#9637963

Compatible displays can be hinged together using the EuroFit Connector.



Soft carry case included with all kits.

EASE OF SETUP

Double-sided graphic covers easily slide on and off.



Setup fee: \$20.00(G); no setup fee on orders placed via our website. View current graphic templates, assembly videos and instructions on our website.

72"H EuroFit Straight Wall

Item #	Description	1	2-5	6-11	12-24
256203	2'W Kit	208.00	201.00	196.00	189.00
256205	2'W Graphic Cover	85.00	82.00	80.00	77.00
256212	3'W Kit	275.00	264.00	253.00	238.00
256214	3'W Graphic Cover	128.00	121.00	115.00	104.00
256221	4'W Kit	348.00	337.00	327.00	316.00
256223	4'W Graphic Cover	185.00	179.00	174.00	168.00
256230	5'W Kit	433.00	420.00	407.00	394.00
256232	5'W Graphic Cover	230.00	223.00	216.00	209.00
256239	8'W Kit	586.00	568.00	551.00	533.00
256241	8'W Graphic Cover	332.00	322.00	312.00	302.00

Kit Includes: Hardware, Graphic Cover, EuroFit Connector and Soft Carry Case USD MSRP (C)

Description	Product Size	Finished Graphic Size	Product Wt.	Media
2'W	24.5"W x 72"H x 19"D	View Online Template	7.5 lbs.	Polyester Knit
3'W	36.5"W x 72"H x 19"D	View Online Template	8.25 lbs.	Polyester Knit
4'W	48.5"W x 72"H x 19"D	View Online Template	9.5 lbs.	Polyester Knit
5'W	60.5"W x 72"H x 19"D	View Online Template	11 lbs.	Polyester Knit
8'W	96.5"W x 72"H x 19"D	View Online Template	15.5 lbs.	Polyester Knit

Production Lead Time: 4 days from final proof approval



90"H EuroFit Straight Wall

Item #	Description	1	2-5	6-11	12-24
256206	2'W Kit	247.00	240.00	232.00	225.00
256208	2'W Graphic Cover	112.00	109.00	105.00	102.00
256215	3'W Kit	332.00	322.00	313.00	302.00
256217	3'W Graphic Cover	174.00	169.00	164.00	158.00
256224	4'W Kit	433.00	420.00	407.00	394.00
256226	4'W Graphic Cover	230.00	223.00	216.00	209.00
256233	5'W Kit	500.00	485.00	471.00	455.00
256235	5'W Graphic Cover	275.00	267.00	259.00	250.00
255180	8'W Kit	760.00	737.00	714.00	692.00
255182	8'W Graphic Cover	394.00	382.00	370.00	359.00
256251	10'W Kit	1335.00	1310.00	1270.00	1245.00
256253	10'W Graphic Cover	800.00	785.00	760.00	745.00
256427	20'W Kit	2635.00	2605.00	2505.00	2475.00
256429	20'W Graphic Cover	1585.00	1555.00	1505.00	1475.00

Kit Includes: Hardware, Graphic Cover, EuroFit Connector and Soft Carry Case USD MSRP (C)

20' Display Includes: Hardware, Graphic Cover, 2 EuroFit Connectors and 2 Soft Carry Cases

Description	Product Size	Finished Graphic Size	Product Wt.	Media
2'W	24.5"W x 91.25"H x 19"D	View Online Template	9.25 lbs.	Polyester Knit
3'W	36.5"W x 91.25"H x 19"D	View Online Template	10.3 lbs.	Polyester Knit
4'W	48.5"W x 91.25"H x 19"D	View Online Template	11.4 lbs.	Polyester Knit
5'W	60.5"W x 91.25"H x 19"D	View Online Template	12.6 lbs.	Polyester Knit
8'W	96.5"W x 91.25"H x 19"D	View Online Template	18 lbs.	Polyester Knit
10'W	115.5"W x 91.25"H x 19"D	View Online Template	21.25 lbs.	Polyester Knit
20'W	231"W x 91.25"H x 19"D	View Online Template	42.75 lbs.	Polyester Knit

Production Lead Time: 4 days from final proof approval



EuroFit Incline Wall

Item #	Description	1	2-5	6-11	12-24
256320	2'W Kit	247.00	240.00	232.00	225.00
256322	2'W Graphic Cover	112.00	109.00	105.00	102.00
256323	3'W Kit	332.00	322.00	313.00	302.00
256325	3'W Graphic Cover	174.00	169.00	164.00	158.00
256326	4'W Kit	433.00	420.00	407.00	394.00
256328	4'W Graphic Cover	230.00	223.00	216.00	209.00
256329	5'W Kit	500.00	485.00	471.00	455.00
256331	5'W Graphic Cover	275.00	267.00	259.00	250.00
256332	8'W Kit	760.00	737.00	714.00	692.00
256334	8'W Graphic Cover	394.00	382.00	370.00	359.00

Kit Includes: Hardware, Graphic Cover, EuroFit Connector and Soft Carry Case USD MSRP (C)

Description	Product Size	Finished Graphic Size	Product Wt.	Media
2'W	24.5"W x 91"H x 19"D	View Online Template	9.25 lbs.	Polyester Knit
3'W	36.5"W x 91"H x 19"D	View Online Template	10 lbs.	Polyester Knit
4'W	48.5"W x 91"H x 19"D	View Online Template	12.5 lbs.	Polyester Knit
5'W	60.5"W x 91"H x 19"D	View Online Template	14 lbs.	Polyester Knit
8'W	96.5"W x 91"H x 19"D	View Online Template	18 lbs.	Polyester Knit

Production Lead Time: 4 days from final proof approval



TABLETOP DISPLAYS



2' and 3' kits on a 6' Standard throw (sold separately; see page 3)

EUROFIT TABLETOP STRAIGHT WALL

Everything you love about a EuroFit Straight Wall, featured in three popular tabletop models.

- Artwork is dye sublimated on polyester knit
- Fabric contours to the frame for a form-fitted look
- Lightweight aluminum frame
- Push-button connectors make assembly a snap
- Floor display kits also available (see page 28-29)



EuroFit Tabletop Straight Wall

Item #	Description	1	2-5	6-11	12-24
254603	2'W Kit	167.00	162.00	157.00	152.00
254605	2'W Graphic Cover	64.00	62.00	60.00	58.00
254606	3'W Kit	214.00	207.00	201.00	194.00
254608	3'W Graphic Cover	95.00	92.00	89.00	86.00
254615	6'W Kit	420.00	407.00	395.00	382.00
254617	6'W Graphic Cover	235.00	228.00	221.00	214.00

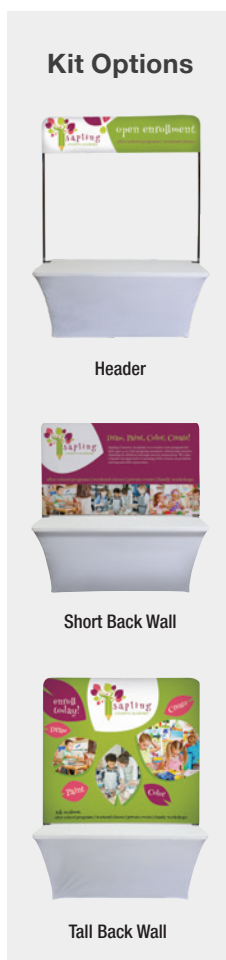
Kit Includes: Hardware, Graphic Cover, EuroFit Connector and Soft Carry Case USD MSRP (C)

Description	Product Size	Finished Graphic Size	Product Wt.	Media
2'W	24.375"W x 49.5"H x 11.75"D	View Online Template	6.2 lbs.	Polyester Knit
3'W	36.5"W x 49.5"H x 11.75"D	View Online Template	7.6 lbs.	Polyester Knit
6'W	72.25"W x 49.5"H x 11.75"D	View Online Template	9.8 lbs.	Polyester Knit

Production Lead Time: 4 days from final proof approval



6' Header kit on a 6' UltraFit Curve throw (sold separately; see page 4)



OVER-THE-TOP DISPLAY

Create an overhead banner or a stylish backdrop by simply clamping this display to a table.

- Artwork is dye sublimated on polyester knit
- Double-sided cover is viewable from both the front and back of the display
- Lightweight, durable carbon composite poles with aluminum corners



Over-The-Top Display

Item #	Description	1	2-5	6-11	12-24
280320	6' Header Kit	385.00	375.00	360.00	350.00
280321	8' Header Kit	410.00	400.00	385.00	375.00
280322	6' Short Back Wall Kit	425.00	415.00	400.00	390.00
280323	8' Short Back Wall Kit	455.00	445.00	430.00	420.00
280324	6' Tall Back Wall Kit	455.00	445.00	430.00	420.00
280325	8' Tall Back Wall Kit	475.00	465.00	450.00	440.00
280331	Two Floor Bases with Pole Posts	93.00	87.00	81.00	76.00

Kit Includes: Frame, Graphic Cover and Soft Carry Case USD MSRP (C)

Description	Product Size	Finished Graphic Size	Product Wt.	Media
6' Header	74.5"W x 44" or 68.25"H x 2.875"D	View Online Template	9.75 lbs.	Polyester Knit
8' Header	98"W x 44" or 68.25"H x 2.875"D	View Online Template	10 lbs.	Polyester Knit
6' Short Back Wall	74.5"W x 44"H x 2.875"D	View Online Template	11 lbs.	Polyester Knit
8' Short Back Wall	98"W x 44"H x 2.875"D	View Online Template	11.75 lbs.	Polyester Knit
6' Tall Back Wall	74.5"W x 68.25"H x 2.875"D	View Online Template	12 lbs.	Polyester Knit
8' Tall Back Wall	98"W x 68.25"H x 2.875"D	View Online Template	13.25 lbs.	Polyester Knit

Production Lead Time: 4 days from final proof approval



The easy-to-use clamp system attaches to any table up to 2.5" thick. No tools required.



Use as a freestanding display by adding floor bases (sold separately, available online).

MICRO GEOMETRIX DISPLAY

Create a variety of multi-dimensional displays in seconds with the Micro GeoMetrix.

- Lightweight aluminum frame with plastic hubs
- Artwork is dye sublimated on polyester double knit
- Additional kits, graphic panels, and hardware available online

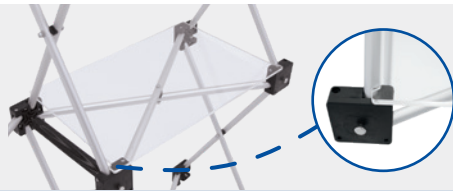


Micro GeoMetrix Classic

Item #	Description	1	2-5	6-11	12-24
337207	Kit	410.00	405.00	400.00	395.00
Kit Includes: Nine-Quad Square Frame, 5 Graphic Panels and Soft Carry Case				USD MSRP (C)	

Product Size	Finished Graphic Size	Product Wt.	Media
46"W x 46.75"H x 9.62"D	View Online Template	9.25 lbs.	Polyester Double Knit

Production Lead Time: 4 days from final proof approval



Add-On

Micro GeoMetrix Shelf

Item #	Description	1	2-5	6-11	12-24
338069	Straight Internal Clear Shelf	36.10	34.30	33.20	31.80
Each shelf supports up to 5 lbs.				USD MSRP (C)	
Compatible with frames equipped with locking arms only.					

Shown on a 6' Standard throw and 57" dye-sublimated Accent Runner (throw and runner sold separately)



MINI TABLETOP DISPLAYS

These displays fit into small areas, making them perfect for tables and countertops.

- Lightweight and portable
- Warranties range between six and three years (see website for details)
- Kit contents vary (see website for details)

Mini Retractors

Item #	Description	1	2-5	6-11	12-24
262014	Deluxe Mini Kit	60.00	58.75	57.25	56.00
210240	Small Mini Promo Kit	46.50	44.00	43.00	41.00
210242	Large Mini Promo Kit	52.00	49.50	48.00	46.00
261130	Economy Tabletop No-Curl Hybrid Media Kit	173.00	161.00	150.00	138.00
262160	Economy Tabletop No-Curl Opaque Fabric Kit	173.00	161.00	150.00	138.00
261195	MagnaLink Tabletop Kit	230.00	216.00	205.00	191.00
				USD MSRP (C)	

Product Size	Finished Graphic Size
Sizes Vary	View Online Template

Production Lead Time: 2-4 days from final proof approval

Mini Displays

Item #	Description	1	2-5	6-11	12-24
280370	EuroFit Mini Kit Double-Sided Kit	77.30	75.00	72.60	70.40
210032	Mini X Banner Display Kit	29.90	28.40	27.50	26.30
210245	Monopode Tabletop Kit	112.80	106.10	100.30	93.60
263360	Countertop Wood Chalkboard Small Kit	43.40	42.10	40.10	39.10
263363	Countertop Wood Chalkboard Large Kit	48.50	47.00	44.80	43.60
263081	FrameWorx Tabletop 13 oz. Smooth Scrim Vinyl Single-Sided Kit	101.60	96.60	93.40	89.40
263082	FrameWorx Tabletop 13 oz. Smooth Scrim Vinyl Double-Sided Kit	118.60	112.70	109.10	104.40
263084	FrameWorx Tabletop No-Curl Opaque Fabric Single-Sided Kit	129.80	123.40	119.40	114.20
				USD MSRP (C)	

Item #	Description	1	5	6-11	12-24
191540	Micro Teardrop Sail Sign Single-Sided Kit	NA	42.90	41.60	39.50
191541	Micro Teardrop Sail Sign Double-Sided Kit	NA	68.68	66.80	63.40
				USD MSRP (C)	

Setup fee: \$20.00(G); no setup fee on orders placed via our website. View current graphic templates, assembly videos and instructions on our website.

VINYL & FABRIC BANNERS

NO SETUP FEES

ALL YEAR*

PROMO CODE S20BFSU12



- NO setup fees!*
- Wide variety of materials
- Available for delivery in as little as two days

See pages 66-72 in the 2020 in our Product Guide for details.

**Must use promo code when ordering*

Table Covers
Page 2

Retractable Banners
Page 6

Banner Displays
Page 10

Banners
Page 14

Sail Signs
Page 16

Flags
Page 18

Event Products
Page 19

Tents
Page 20

Signage
Page 22

Floor Displays
Page 26

Tabletop Displays
Page 30

Distributed by:



**WE'RE BEYOND COMPLIANT.
WE'RE APPROVED!**

One of the pillars of our On Target Guarantee is a Commitment to Safety and Quality. In keeping true to this, all of our 2020 catalog products are not just Prop 65 compliant — they are actually approved. They have met and passed all Prop 65 testing standards. This means no warning labels are necessary and no worries for California sales.

Valid through December 31, 2020

#295651