

Showdown[®]

DISPLAYS



INDOOR EVENTS

2020

TABLE COVERS

6' with full-color
full-bleed

Underside
of material
is blank.

Covers three sides
of the table with a
9" overhang in back.

ECONOMY TABLE THROW

The open-back design of this throw gives you legroom and quick access to anything you store beneath the table.

- Now offering a larger maximum print area for even more ad space on Full-Color Front Only throws
- Draped corners
- Polyester poplin
- Machine-washable and wrinkle-resistant
- Flame retardant treated (FR rated for exhibit halls)



Full-Color Front Only

Item #	Description	1	2-5	6-11	12-24
106045	4' Economy Throw	130.00	116.00	109.00	101.00
106002	6' Economy Throw	182.00	162.00	152.00	131.00
106014	8' Economy Throw	202.00	182.00	162.00	152.00
Stock fabric colors with full-color artwork printed on front.				USD MSRP (C)	
Artwork cannot exceed maximum size requirements.					

Description	Table Size	Front Only Graphic Size	Product Wt.
4'	48"W x 29"H x 29.75"D	40"W x 25"H	1.25 lbs.
6'	72"W x 29"H x 29.75"D	64"W x 25"H	2 lbs.
8'	96"W x 29"H x 29.75"D	64"W x 25"H	2.5 lbs.

Production Lead Time: 2 days from final proof approval

Full-Color Full-Bleed

Item #	Description	1	2-5	6-11	12-24
106042	4' Economy Throw	200.00	190.00	180.00	170.00
106010	6' Economy Throw	265.00	240.00	225.00	210.00
106022	8' Economy Throw	290.00	260.00	245.00	225.00
White fabric fully dye sublimated with full-color artwork.		USD MSRP (C)			

Description	Table Size	Full-Bleed Graphic Size	Product Wt.
4'	48"W x 29"H x 29.75"D	View Online Template	1.25 lbs.
6'	72"W x 29"H x 29.75"D	View Online Template	2 lbs.
8'	96"W x 29"H x 29.75"D	View Online Template	2.5 lbs.

Production Lead Time: 2 days from final proof approval



Full-Color Front Only

- Graphic can range in complexity from a simple one-color design to a detailed full-color design
- Vector art preferred
- Available in stock fabric colors only
- Artwork is printed on front only
- Maximum artwork size requirements apply
- Fold and store in included poly bag

Full-Color Full-Bleed

- Ideal for complex designs, photographic images, or art with gradients
- Vector and raster art accepted
- Art is dye sublimated on white fabric only
- Full-color artwork can be printed across the entire throw
- No artwork size restrictions
- Fold and store in included poly bag

Stock Table Throw Colors

Black	Navy Blue PMS 2767
Blueberry PMS 647	Orange PMS 1505
Brown PMS 476	Purple PMS Violet
Burgundy PMS 504	Red PMS 201
Charcoal PMS 425	Royal Blue PMS 661
Gray PMS 422	White
Hunter Green PMS 350	Yellow PMS 1235
Lime Green PMS 375	

PMS colors are for reference only and may vary slightly from actual color.

Setup fee: \$20.00(G); no setup fee on orders placed via our website. View current graphic templates, assembly videos and instructions on our website.

STANDARD TABLE THROW

Our most popular table throw is elegant in its simplicity.

- Now offering a larger maximum print area for even more ad space on Full-Color Front Only throws
- Covers four sides of the table, viewable from all sides
- Draped corners
- Polyester poplin
- Machine-washable and wrinkle-resistant
- Flame retardant treated (FR rated for exhibit halls)



Keep your supplies and accessories out of sight.



6' with full-color full-bleed

Full-Color Front Only

Item #	Description	1	2-5	6-11	12-24
109105	4' Standard Throw	140.00	125.00	118.00	109.00
109002	6' Standard Throw	202.00	172.00	162.00	152.00
109014	8' Standard Throw	222.00	192.00	182.00	161.00

Stock fabric colors with full-color artwork printed on front. USD MSRP (C)
Artwork cannot exceed maximum size requirements.

Description	Table Size	Front Only Graphic Size	Product Wt.
4'	48"W x 29"H x 29.75"D	40"W x 25"H	1.5 lbs.
6'	72"W x 29"H x 29.75"D	64"W x 25"H	2.5 lbs.
8'	96"W x 29"H x 29.75"D	64"W x 25"H	3 lbs.

Production Lead Time: 2 days from final proof approval

Full-Color Full-Bleed

Item #	Description	1	2-5	6-11	12-24
109106	4' Standard Throw	260.00	247.00	234.00	221.00
109010	6' Standard Throw	295.00	265.00	250.00	235.00
109022	8' Standard Throw	315.00	285.00	270.00	250.00

White fabric fully dye sublimated with full-color artwork. USD MSRP (C)

Description	Table Size	Full-Bleed Graphic Size	Product Wt.
4'	48"W x 29"H x 29.75"D	View Online Template	1.5 lbs.
6'	72"W x 29"H x 29.75"D	View Online Template	2.5 lbs.
8'	96"W x 29"H x 29.75"D	View Online Template	3 lbs.

Production Lead Time: 2 days from final proof approval

Add-On

Table Throw Messenger Bag

Best for folded table throws; features shoulder straps for easy transportation.



Table Throw Messenger Bag

Item #	1	2-5	6-11	12-24
220107	33.60	31.20	29.20	27.90

USD MSRP (C)

CONVERTIBLE TABLE THROW

This throw is easily convertible so it fits both 8' and 6' table sizes.

- Now offering a larger maximum print area for even more ad space on Full-Color Front Only throws
- Hook-and-loop fasteners make size conversion quick and easy
- Covers four sides of the table
- Polyester poplin
- Machine-washable and wrinkle-resistant
- Flame retardant treated (FR rated for exhibit halls)



Full-Color Front Only

Item #	Description	1	2-5	6-11	12-24
104014	6'/8' Convertible Throw	255.00	225.00	215.00	205.00

Stock fabric colors with full-color artwork printed on front. USD MSRP (C)
Artwork cannot exceed maximum size requirements.

Full-Color Full-Bleed

Item #	Description	1	2-5	6-11	12-24
104022	6'/8' Convertible Throw	320.00	290.00	280.00	265.00

White fabric fully dye sublimated with full-color artwork. USD MSRP (C)

Description	Table Size	Front Only Graphic Size	Full-Bleed Graphic Size	Product Wt.
6'/8'	72"/96"W x 29"H x 29.75"D	64"W x 25"H	View Online Template	3 lbs.

Production Lead Time: 2 days from final proof approval

8' with full-color full-bleed transforms into a 6' fitted



Converts from 8' to 6' and Back Again!



1. Grab the back corner of the table throw.



2. Attach the corner to the back of the throw using the built-in hook-and-loop fasteners.



3. Grab the front corner of the throw and fold it tightly around the back corner of the table.



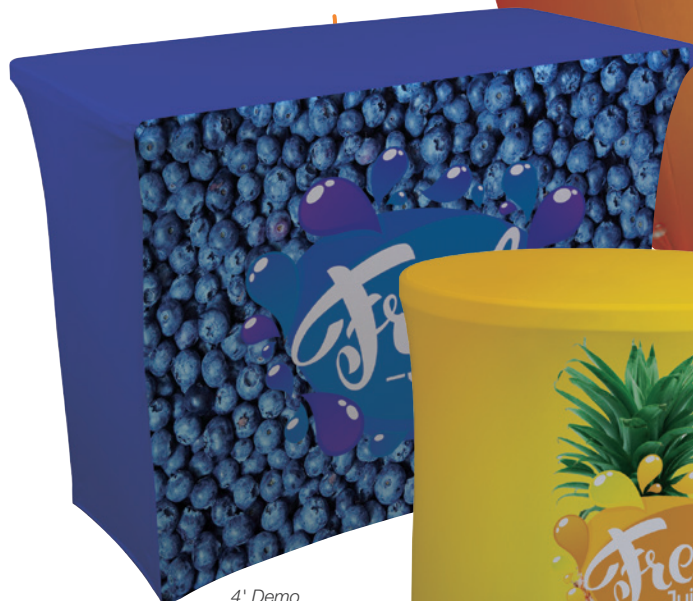
4. Secure it in place with the built-in hook-and-loop fasteners.

Setup fee: \$20.00(G); no setup fee on orders placed via our website. View current graphic templates, assembly videos and instructions on our website.

TABLE COVERS



Demo and Classic feature a zippered back for an enclosed storage area.



4' Demo



31.5" Round with closed back



6' Classic



Table leg slips into the sleeve to pull the throw taut.

ULTRAFIT TABLE THROW

This form-fitting throw is an attractive option for promoting your brand. It stretches to fit tightly around tables, creating a crisp, refined appearance.

- Tight, form-fitting look
- Artwork is dye sublimated on two-way stretch fabric
- Machine-washable and wrinkle-resistant
- Flame retardant treated (FR rated for exhibit halls)



UltraFit Table Throw

Item #	Description	1	2-5	6-11	12-24
114012	31.5" Bar-Height Full-Color Full-Bleed	355.00	345.00	325.00	305.00
114100	4' Full-Color Full-Bleed	390.00	375.00	360.00	345.00
114002	6' Full-Color Full-Bleed	460.00	440.00	430.00	410.00
114005	8' Full-Color Full-Bleed	510.00	490.00	469.00	459.00

White fabric fully dye sublimated with full-color artwork

Description	Table Size	Full-Bleed Graphic Size	Product Wt.
31.5" Round	43"H x 31.5"D	View Online Template	1.75 lbs.
4' Demo	47.75"W x 36"H x 24"D	View Online Template	2 lbs.
6' Classic	72"W x 29"H x 29.75"D	View Online Template	2.5 lbs.
8' Classic	96"W x 29"H x 29.75"D	View Online Template	3 lbs.

Production Lead Time: 3 days from final proof approval

PREMIUM TABLE THROW

Premium throws are perfect for showcasing eye-catching, full-color imagery with an upscale look.

- Covers four sides of the table
- Draped corners
- Nearly-opaque material
- Artwork is dye sublimated on two-way stretch fabric
- Machine-washable
- Flame retardant treated (FR rated for exhibit halls)



Full-Color Full-Bleed

Item #	Description	1	2-5	6-11	12-24
109070	6' Premium Throw	450.00	400.00	375.00	350.00
109071	8' Premium Throw	475.00	420.00	395.00	370.00

White fabric fully dye sublimated with full-color artwork.

USD MSRP (C)

Description	Table Size	Full-Bleed Graphic Size	Product Wt.
6'	72"W x 29"H x 29.75"D	View Online Template	3.5 lbs.
8'	96"W x 29"H x 29.75"D	View Online Template	4.75 lbs.

Production Lead Time: 2 days from final proof approval



6'



Now finished with a hemmed edge.

Setup fee: \$20.00(G); no setup fee on orders placed via our website. View current graphic templates, assembly videos and instructions on our website.

STANDARD TABLE RUNNER

This stylish runner lets you add a logo or design to any table.

- Now offering a larger maximum print area for even more ad space
- Available in two widths
- Polyester poplin
- Machine-washable and wrinkle-resistant
- Flame retardant treated (FR rated for exhibit halls)
- Table throw sold separately



Full-Color Front Only

Item #	Description	1	2-5	6-11	12-24
102002	28" Standard Runner	131.00	121.00	111.00	101.00
102014	57" Standard Runner	162.00	142.00	132.00	122.00

Stock fabric colors with full-color artwork printed on front. USD MSRP (C)
Artwork cannot exceed maximum size requirements.

Full-Color Full-Bleed

Item #	Description	1	2-5	6-11	12-24
102010	28" Standard Runner	190.00	165.00	160.00	145.00
102022	57" Standard Runner	220.00	195.00	180.00	165.00

White fabric fully dye sublimated with full-color artwork. USD MSRP (C)

Description	Finished Size	Front Only Graphic Size	Dye Sub Graphic Size	Product Wt.
28"	28"W x 80"D	24"W x 25"H	View Online Template	0.5 lb.
57"	57"W x 80"D	50"W x 25"H	View Online Template	1 lb.

Production Lead Time: 2 days from final proof approval

Stock Standard Runner Colors

- Black
- Blueberry PMS 647
- Brown PMS 476
- Burgundy PMS 504
- Charcoal PMS 425
- Gray PMS 422
- Hunter Green PMS 350
- Navy Blue PMS 2767
- Purple PMS Violet
- Red PMS 201
- Royal Blue PMS 661
- White
- Yellow PMS 1235

PMS colors are for reference only and may vary slightly from actual color.



57" with full-color front only



28" with full-color full-bleed

LAZERLINE THROW

These cost-effective throws are laser-cut for a crisp finished edge.

- Heat-treated edges will not fray or unravel
- Available in runner, 3-sided or 4-sided throws
- Polyester poplin
- Machine-washable and wrinkle-resistant
- Flame retardant treated (FR rated for exhibit halls)



4-sided table throws offer full coverage on all sides of the table.



3-sided table throws have a 9" overhang in the back to keep throw from slipping off the table.



6' Throw

Laser-cut edges for a clean look.

Full-Color Front Only

Item #	Description	1	2-5	6-11	12-24
108213	6' LazerLine 3-Sided Throw Full-Color Front Only	164.00	146.00	137.00	118.00
108214	8' LazerLine 3-Sided Throw Full-Color Front Only	182.00	164.00	146.00	137.00
108201	6' LazerLine 4-Sided Throw Full-Color Front Only	182.00	155.00	146.00	137.00
108202	8' LazerLine 4-Sided Throw Full-Color Front Only	200.00	173.00	164.00	145.00

Stock fabric colors with full-color artwork printed on front. USD MSRP (C)
Artwork cannot exceed maximum size requirements.

Description	Table Size	Front Only Graphic Size	Product Wt. (3-Sided / 4-Sided)
6'	72"W x 29"H x 29.75"D	64"W x 25"H	2 lbs. / 2.5 lbs.
8'	96"W x 29"H x 29.75"D	64"W x 25"H	2.5 lbs. / 3 lbs.

Production Lead Time: 2 days from final proof approval

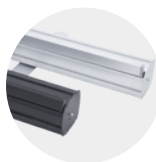
Stock Throw Colors

- Black
- Blueberry PMS 647
- Brown PMS 476
- Burgundy PMS 504
- Charcoal PMS 425
- Gray PMS 422
- Hunter Green PMS 350
- Lime Green PMS 375
- Navy Blue PMS 2767
- Orange PMS 1505
- Purple PMS Violet
- Red PMS 201
- Royal Blue PMS 661
- Yellow PMS 1235

PMS colors are for reference only and may vary slightly from actual color.

Setup fee: \$20.00(G); no setup fee on orders placed via our website. View current graphic templates, assembly videos and instructions on our website.

RETRACTABLE BANNERS



Hardware available in silver or black.



Two swivel feet for stability.



Banner rail easily attaches to the top of the pole for quick setup.

ECONOMY RETRACTOR

The popular Economy retractor is versatile and budget-friendly, making it a great option for the cost-conscious marketer.

- Lightweight aluminum base
- Banner available in Titan™ no-curl hybrid media or Titan™ no-curl opaque fabric
- Additional sizes available online



Economy Retractor

Item #	Description	1	2-5	6-11	12-24
261134	31.5" No-Curl Hybrid Media Kit	271.00	251.00	240.00	228.00
262162	31.5" No-Curl Opaque Fabric Kit	271.00	251.00	240.00	228.00
261136	33.5" No-Curl Hybrid Media Kit	295.00	275.00	263.00	243.00
262163	33.5" No-Curl Opaque Fabric Kit	295.00	275.00	263.00	243.00
261138	36" No-Curl Hybrid Media Kit	327.00	314.00	302.00	290.00
262164	36" No-Curl Opaque Fabric Kit	327.00	314.00	302.00	290.00

Kit Includes: Hardware, Installed Banner and Soft Carry Case USD MSRP (C)

Description	Product Size	Finished Graphic Size	Product Wt.
31.5"	32"W x 83.5"H x 15"D	31.5"W x 78.5"H	7 lbs.
33.5"	34"W x 83.5"H x 15"D	33.5"W x 78.5"H	7.25 lbs.
36"	36.5"W x 83.5"H x 15"D	36"W x 78.5"H	8.5 lbs.

Production Lead Time: 2 days from final proof approval

Add-On



Ultimate LED Single Light Kit

Item #	Description	1	2-5	6-11	12-24
150120	Kit	144.00	140.00	135.00	131.00

USD MSRP (C)



Dry-erase media features a glossy surface that has the write-on/wipe-off utility of a dry-erase board (dry-erase markers not included).



Banner rail easily attaches to the top of the pole for quick setup.



Hook-and-loop fasteners make banners easy to swap out.

ECONOMY PLUS RETRACTOR

This display is as reliable as the popular Economy Retractor, but it includes some great additional features, like improved durability.

- Available in two widths
- Single-footed design keeps the retractor stable while maintaining a low profile
- Flip-lever telescoping pole makes setup and adjustment simple
- Banner available in Titan™ no-curl hybrid media, Titan™ no-curl opaque fabric or dry-erase media



Economy Plus Retractor

Item #	Description	1	2-5	6-11	12-24
261012	31.5" No-Curl Hybrid Media Kit	310.00	288.00	273.00	262.00
262191	31.5" Dry-Erase Media Kit	310.00	288.00	273.00	262.00
261002	33.5" No-Curl Hybrid Media Kit	338.00	315.00	301.00	278.00
262192	33.5" Dry-Erase Media Kit	338.00	315.00	301.00	278.00

Kit Includes: Hardware, Installed Banner and Soft Carry Case USD MSRP (C)

Description	Product Size	Finished Graphic Size	Product Wt.
31.5"	32"W x 62"-82.5"H x 15"D	31.5"W x 58"-78.5"H	7 lbs.
33.5"	34"W x 62"-82.5"H x 15"D	33.5"W x 58"-78.5"H	7.5 lbs.

Production Lead Time: 2 days from final proof approval

Setup fee: \$20.00(G); no setup fee on orders placed via our website. View current graphic templates, assembly videos and instructions on our website.

IDEAL RETRACTOR

The Ideal Retractor is designed from the ground up to be a quick, simple solution for short-term promotional applications.

- Lightweight, portable base
- Three-section shock cord pole
- Artwork is printed on tear-resistant Titan™ polypropylene media
- Banner is printed single-sided; double-sided option includes two banners

2 MO.
HARDWARE
WARRANTY

25
RCAT
RATING

Ideal Retractor

Item #	Description	1	2-5	6-11	12-24
261150	31.5" Single Kit	113.00	106.00	101.00	94.00
261156	31.5" Double Kit	224.00	220.00	198.00	195.00
261153	33.5" Single Kit	124.00	117.00	110.00	103.00
261158	33.5" Double Kit	244.00	240.00	216.00	212.00

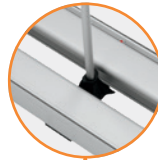
Kit Includes: Hardware, Installed Banner(s) and Soft Carry Case USD MSRP (C)

Description	Product Size (Single / Double)	Finished Graphic Size	Product Wt. (Single / Double)
31.5"	32.25"W x 82.25"H x 10.25"D / 8"D	31.25"W x 79.5"H	4.6 lbs. / 9.25 lbs.
33.5"	34.25"W x 82.25"H x 10.25"D / 8"D	33.25"W x 79.5"H	5 lbs. / 9.5 lbs.

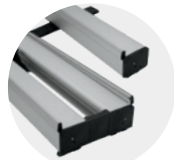
Production Lead Time: 1 day from final proof approval



Double-sided retractor features a center-mounted pole with twin banner hooks on top.



Shock cord pole makes setup and teardown easy.



Lightweight aluminum base features plastic ends and is available in single- and double-banner options.



31.5" double



33.5" single

VALUE RETRACTOR

The Value Retractor is a cost-conscious option for your portable signage needs.

- Printed on tear-resistant Titan™ polypropylene media
- Two swivel feet for stability
- Available in three widths
- Additional media option available online

6 MO.
HARDWARE
WARRANTY

50
RCAT
RATING

Value Retractor

Item #	Description	1	2-5	6-11	12-24
262240	31.5" Polypropylene Media Kit	167.00	157.00	149.00	139.00
262243	33.5" Polypropylene Media Kit	183.00	172.00	163.00	152.00
262246	36" Polypropylene Media Kit	209.00	196.00	186.00	173.00

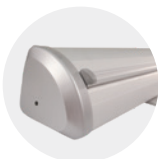
Kit Includes: Hardware, Installed Banner and Soft Carry Case USD MSRP (C)

Description	Product Size	Finished Graphic Size	Product Wt.
31.5"	34"W x 82"H x 15"D	31.5"W x 79.5"H	7 lbs.
33.5"	35.75"W x 82"H x 15"D	33.5"W x 79.5"H	7.25 lbs.
36"	38.5"W x 82"H x 15"D	36"W x 79.5"H	7.6 lbs.

Production Lead Time: 2 days from final proof approval



Shock cord pole makes setup and teardown easy.



Lightweight aluminum base with plastic ends.



31.5"



33.5"



36"

Setup fee: \$20.00(G); no setup fee on orders placed via our website. View current graphic templates, assembly videos and instructions on our website.

RETRACTABLE BANNERS



46.5" double

33.5" single



Dry-erase media features a glossy surface that has the write-on/wipe-off utility of a dry-erase board (dry-erase markers not included).



Hook-and-loop fasteners make banners easy to swap out.



Streamlined base is available in single- and double-banner options.

DELUXE PRO RETRACTOR

The Deluxe Pro Retractor features a rounded base with durable aluminum end caps, and swapping out graphics is a breeze with the hook-and-loop banner system.

- Banner available in Titan™ no-curl opaque fabric or dry-erase media
- Banner is printed single-sided; double-sided option includes two banners



Deluxe Pro Retractor

Item #	Description	1	2-5	6-11	12-24
262250	33.5" Single No-Curl Opaque Fabric Kit	341.00	321.00	303.00	283.00
262251	33.5" Double No-Curl Opaque Fabric Kit	499.00	487.00	441.00	429.00
262202	33.5" Single Dry-Erase Media Kit	341.00	321.00	303.00	283.00
262203	33.5" Double Dry-Erase Media Kit	499.00	487.00	441.00	429.00
262254	46.5" Single No-Curl Opaque Fabric Kit	382.00	359.00	340.00	317.00
262255	46.5" Double No-Curl Opaque Fabric Kit	596.00	581.00	528.00	513.00
262204	46.5" Single Dry-Erase Media Kit	382.00	359.00	340.00	317.00
262205	46.5" Double Dry-Erase Media Kit	596.00	581.00	528.00	513.00

Kit Includes: Hardware, Installed Banner(s) and Soft Carry Case USD MSRP (C)

Description	Product Size (Single / Double)	Finished Graphic Size	Product Wt. (Single / Double)
33.5"	34.75"W x 65.25"-83.25"H x 8.5"D / 9.25"D	33.5"W x 61.5"-79.5"H	12.25 lbs. / 16 lbs.
46.5"	48.5"W x 65.25"-83.25"H x 8.5"D / 9.25"D	46.5"W x 61.5"-79.5"H	16.75 lbs. / 22.5 lbs.

Production Lead Time: 1 day for no curl opaque fabric / 2 days for dry-erase media from final proof approval



SUPERB RETRACTOR

This retractor features a flip-open base for easy graphic changes, and its hardware is built to last a lifetime.

- Durable construction makes this a long-lasting option
- Artwork is printed on Titan™ no-curl hybrid media



Superb Retractor

Item #	Description	1	2-5	6-11	12-24
261118	Kit	435.00	419.00	387.00	374.00
262023	Banner and Roller	259.00	249.00	230.00	221.00

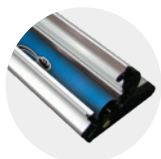
Kit Includes: Hardware, Installed Banner and Soft Carry Case USD MSRP (C)

Product Size	Finished Graphic Size	Product Wt.	Media
35.5"W x 37"-80.5"H x 7.75"D	33.5"W x 31.5"-78"H	8 lbs.	Titan™ No-Curl Hybrid Media

Production Lead Time: 1 day from final proof approval



Low-profile base is available with black or silver ends.



Flip-open base allows for easy banner changes.



Flip-lever telescoping pole makes setup and adjustment simple.

LUMOS RETRACTOR

This retractable banner is illuminated from both the top and bottom. What a bright idea!

- Artwork is printed on Titan™ no-curl opaque fabric
- Flip lever telescoping pole makes setup and adjustment simple
- Banner attaches magnetically so it's easy to swap out
- AC adapter and power cord included
- US Patent #10109222



Lumos Retractor

Item #	Description	1	2-5	6-11	12-24
261230	Kit	567.00	533.00	505.00	471.00
261236	Cartridge Kit	260.00	244.00	231.00	216.00
Kit Includes: Hardware, Installed Banner and Soft Carry Case		USD MSRP (C)			
Cartridge Kit Includes: Cartridge with Installed Banner and Snap Rail					
Product Size	Finished Graphic Size	Product Wt.	Media		
37.5"W x 31"-96"H x 9.5"D	33.5"W x 26"-90"H	22.5 lbs.	Titan™ No-Curl Opaque Fabric		

Production Lead Time: 2 days from final proof approval



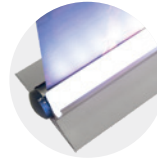
LIGHTS UP!



Graphic roller cartridge slides in and out of the end of the base so it can be swapped easily.



Top rail light simply slides onto the snap rail and is secured with thumbscrews.



Bottom light bar is built into the base.



Cam lock secures the pole to the base.

JUMBO WIDE RETRACTOR

Create an impressive backdrop with this ultra-wide retractable banner.

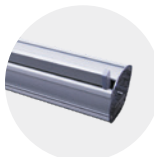
- High-tension base springs keep the banner taut
- Double-footed design for stability
- Banner available in Titan™ no-curl fabric or Titan™ 13 oz. smooth scrim vinyl
- Available in three widths



Jumbo Wide Retractor

Item #	Description	1	2-5	6-11	12-24
262138	5' No-Curl Fabric Kit	570.00	554.00	530.00	509.00
261080	5' 13 oz. Smooth Scrim Vinyl Kit	570.00	554.00	530.00	509.00
262139	6' No-Curl Fabric Kit	686.00	661.00	636.00	611.00
261082	6' 13 oz. Smooth Scrim Vinyl Kit	686.00	661.00	636.00	611.00
262140	8' No-Curl Fabric Kit	802.00	774.00	747.00	719.00
261018	8' 13 oz. Smooth Scrim Vinyl Kit	802.00	774.00	747.00	719.00
Kit Includes: Hardware, Installed Banner and Soft Carry Case		USD MSRP (C)			
Description	Product Size	Finished Graphic Size	Product Wt. (Fabric / Vinyl)		
5'	60.5"W x 83"H x 15.75"D	59.75"W x 78.75"H	18.85 lbs. / 20.75 lbs.		
6'	72.5"W x 83"H x 15.75"D	71.75"W x 78.75"H	21.35 lbs. / 23.5 lbs.		
8'	95.5"W x 83"H x 15.75"D	94.75"W x 78.75"H	26.35 lbs. / 29.5 lbs.		

Production Lead Time: 2 days for no curl fabric / 4 days for smooth scrim vinyl from final proof approval



Hardware comes in silver.



Two shock cord poles support the banner.



Setup fee: \$20.00(G); no setup fee on orders placed via our website. View current graphic templates, assembly videos and instructions on our website.



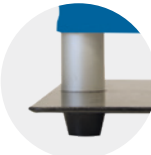
EUROFIT BANNER DISPLAY

A fabric graphic cover slides over a tubed frame, letting you create amazing backdrops or portable privacy walls.

- Multiple sizes can be arranged together for endless display possibilities
- Artwork is dye sublimated on polyester knit
- Double-sided graphic cover is viewable from both the front and back of the display
- Steel base with a black, powder-coated finish
- Not compatible with the EuroFit Connector or EuroFit Cascade Merchandiser kits



Graphic cover slides easily over the frame for quick setup.



Plastic feet elevate the base and keep the display stable.

EuroFit Banner Display

Item #	Description	1	2-5	6-11	12-24
255110	2' Kit	225.00	218.00	212.00	205.00
255113	3' Kit	309.00	300.00	290.00	281.00
255116	4' Kit	413.00	404.00	391.00	382.00
255119	5' Kit	465.00	456.00	442.00	428.00
Kit Includes: Hardware, Graphic Cover and Soft Carry Case				USD MSRP (C)	

Description	Product Size	Finished Graphic Size	Product Wt.	Media
2'	25.75"W x 91"H x 10"D	View Online Template	15.5 lbs.	Polyester Knit
3'	37.75"W x 91"H x 10"D	View Online Template	20.5 lbs.	Polyester Knit
4'	49"W x 91"H x 10"D	View Online Template	25.5 lbs.	Polyester Knit
5'	61"W x 91"H x 10"D	View Online Template	31.5 lbs.	Polyester Knit

Production Lead Time: 4 days from final proof approval

Ultimate LED Light Kit and EuroFit Light Clamp

Add an Ultimate LED Light Kit to your display using the EuroFit light clamp (sold separately). For use on horizontal tubing only.

Item #	Description	1	2-5	6-11	12-24
150120	Ultimate LED Single Light Kit	144.00	140.00	135.00	131.00
Kit Includes: Light, Clamp, Clip, USB Adapter and Soft Carry Case					
255125	EuroFit Light Clamp	5.40	5.20	5.10	4.90
USD MSRP (C)					



Setup fee: \$20.00(G); no setup fee on orders placed via our website. View current graphic templates, assembly videos and instructions on our website.



FRAMEWORX BANNER DISPLAY

These lightweight displays feature a contemporary design that brings new life to your exhibit.

- Banners attach using low-profile clear grommets
- Face cutout hole locations are standard and cannot be customized
- Additional sizes available online

6 MO
HARDWARE
WARRANTY

3' FrameWorx Banner Display

Item #	Description	1	2-5	6-11	12-24
263061	13 oz. Smooth Scrim Vinyl Single-Sided Kit	142.00	134.00	128.00	121.00
263062	13 oz. Smooth Scrim Vinyl Double-Sided Kit	170.00	160.00	153.00	144.00
263065	No-Curl Opaque Fabric Kit	182.00	172.00	164.00	154.00
Kit Includes: Silver or Black Hardware, Banner and Soft Carry Case		USD MSRP (C)			

Product Size 36.75"W x 74"H x 15.5"D
Finished Graphic Size 23.5"W x 67"H
Product Wt. 5.6 lbs.

3.5' FrameWorx Banner Display

Item #	Description	1	2-5	6-11	12-24
263070	13 oz. Smooth Scrim Vinyl Single-Sided Kit	159.00	150.00	144.00	136.00
263071	13 oz. Smooth Scrim Vinyl Double-Sided Kit	187.00	177.00	169.00	159.00
263074	No-Curl Opaque Fabric Kit	194.00	183.00	175.00	165.00
Kit Includes: Silver or Black Hardware, Banner and Soft Carry Case		USD MSRP (C)			

Product Size 41"W x 81.75"H x 15.5"D
Finished Graphic Size 27.5"W x 75"H
Product Wt. 6.2 lbs.

3.5' FrameWorx Face Cutout

Item #	Description	1	2-5	6-11	12-24
263054	13 oz. Smooth Scrim Vinyl Single Face Cutout Kit	159.00	150.00	144.00	136.00
263055	13 oz. Smooth Scrim Vinyl Double Face Cutout Kit	159.00	150.00	144.00	136.00
263056	13 oz. Smooth Scrim Vinyl Junior Face Cutout Kit	159.00	150.00	144.00	136.00
Kit Includes: Silver or Black Hardware, Banner and Soft Carry Case		USD MSRP (C)			

Product Size 41"W x 81.75"H x 15.5"D
Finished Graphic Size 27.5"W x 75"H (View Online Template)
Product Wt. 6.2 lbs.

Production Lead Time: 2 days from final proof approval



Setup fee: \$20.00(G); no setup fee on orders placed via our website. View current graphic templates, assembly videos and instructions on our website.



3' x 8' banner with rope and grommets



3' x 8' banner with grommets

10 OZ. SCRIM VINYL BANNER

This single-sided, light-duty banner is perfect for indoor or short-term outdoor use.

- Multiple finishing styles available (see below)
- Banners used outdoors have a 90-day warranty; banners used indoors have a 1-year warranty



10 oz. Scrim Vinyl Banner

Item #	Size	Product Wt.	1-2	3-7	8-22	23-49
304245	2' x 4'	0.5 lb.	26.64	25.04	23.28	21.60
Item #	Size	Product Wt.	1	2-3	4-9	10-22
304252	3' x 6'	1.25 lbs.	59.94	56.34	52.38	48.60
Item #	Size	Product Wt.	1-2	3-7	8-16	17-33
304255	4' x 6'	1.5 lbs.	75.12	69.84	64.80	58.08

USD MSRP (C)

Production Lead Time: 2 days from final proof approval

13 OZ. SCRIM VINYL BANNER

Versatile enough for both indoor and outdoor use, this single-sided banner is a top choice when it comes to value.

- Multiple finishing styles available (see below)
- Banners used outdoors have a 90-day warranty; banners used indoors have a 1-year warranty



13 oz. Scrim Vinyl Banner

Item #	Size	Product Wt.	1-2	3-7	8-22	23-49
304360	2' x 4'	1 lb.	28.24	25.84	23.28	21.60
Item #	Size	Product Wt.	1	2-3	4-9	10-22
304364	3' x 6'	2.5 lbs.	63.54	58.14	52.38	48.60
Item #	Size	Product Wt.	1	2-5	6-12	13-24
304367	4' x 8'	4 lbs.	103.36	93.12	86.40	77.44

USD MSRP (C)

Production Lead Time: 2 days from final proof approval

POPULAR BANNER FINISHING STYLES

Additional finishing styles available online.

Heat Weld

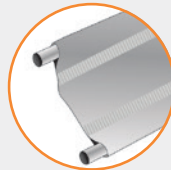
Single-sided vinyl banners only



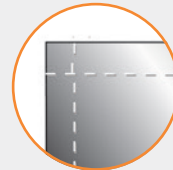
HEAT WELD HEM & GROMMETS



HEAT WELD HEM, ROPE & GROMMETS



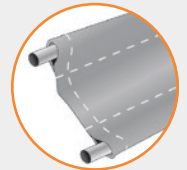
HEAT WELD & 3" POLE POCKETS



SEWN HEM ONLY



SEWN HEM & GROMMETS



3" POLE POCKETS

QUICK & EASY ONLINE BANNER ORDERING!

Visit our website for accurate quotes and hassle-free banner ordering 24/7

Under the Banners & Flags tab, click the Custom Banner option.

Accurate Quoting • Large Quantities • Additional Finishing Styles • Custom Sizes



Setup fee: \$20.00(G); no setup fee on orders placed via our website. View current graphic templates, assembly videos and instructions on our website.

Choose Your Imprint Locations



One imprint per location (peak or valance).
Maximum of eight locations per tent.
Only one setup fee per tent.

Kit Includes:



Soft Carry Case with Wheels



Stake Kit



DELUXE 6' & 8' TENTS

6' and 8' tents are compact enough for use indoors or in tight spaces.

- 1 mm pebble powder-coated steel frame
- 1.25" square legs
- ABS glass-filled nylon joints
- Crank-up canopy creates a taut, clean peak



Deluxe 6' Tent

Item #	Description	1	2-5	6-11	12-24
240800	Unimprinted Kit	540.00	530.00	520.00	500.00
240801	Full-Color Imprint Kit (1 Location)	614.00	602.00	590.00	568.00
240802	Full-Color Imprint Kit (2 Locations)	688.00	674.00	660.00	636.00
240803	Full-Color Imprint Kit (3 Locations)	762.00	746.00	730.00	704.00
240804	Full-Color Imprint Kit (4 Locations)	836.00	818.00	800.00	772.00
240805	Full-Color Imprint Kit (5 Locations)	910.00	890.00	870.00	840.00
240806	Full-Color Imprint Kit (6 Locations)	984.00	962.00	940.00	908.00
240807	Full-Color Imprint Kit (7 Locations)	1058.00	1034.00	1010.00	976.00
240808	Full-Color Imprint Kit (8 Locations)	1132.00	1106.00	1080.00	1044.00
240809	Dye Sublimation Kit	1258.00	1232.00	1206.00	1170.00

USD MSRP (C)

Product Size	Imprint Graphic Size	Dye Sub Graphic Size	Product Wt.
72"W x 109"H-121.5"H x 72"D	Peak: 24"W x 20"H; Valance: 50"W x 8"H	View Online Template	48.5 lbs.

Deluxe 8' Tent

Item #	Description	1	2-5	6-11	12-24
240820	Unimprinted Kit	560.00	550.00	540.00	520.00
240821	Full-Color Imprint Kit (1 Location)	634.00	622.00	610.00	588.00
240822	Full-Color Imprint Kit (2 Locations)	708.00	694.00	680.00	656.00
240823	Full-Color Imprint Kit (3 Locations)	782.00	766.00	750.00	724.00
240824	Full-Color Imprint Kit (4 Locations)	856.00	838.00	820.00	792.00
240825	Full-Color Imprint Kit (5 Locations)	930.00	910.00	890.00	860.00
240826	Full-Color Imprint Kit (6 Locations)	1004.00	982.00	960.00	928.00
240827	Full-Color Imprint Kit (7 Locations)	1078.00	1054.00	1030.00	996.00
240828	Full-Color Imprint Kit (8 Locations)	1152.00	1126.00	1100.00	1064.00
240829	Dye Sublimation Kit	1278.00	1252.00	1226.00	1190.00

USD MSRP (C)

Product Size	Imprint Graphic Size	Dye Sub Graphic Size	Product Wt.
96"W x 117.5"-130"H x 96"D	Peak: 36"W x 28"H; Valance: 50"W x 8"H	View Online Template	58 lbs.

Production Lead Time: 3 days for full-color imprint / 7 days for dye sublimation from final proof approval



Easy-Glide Tent Feet allow the tent frame to slide on dirt and grass, preventing the legs from catching. US Patent #D760857



Legs feature levers for easy height adjustments.

6' & 8' Stock Canopy Colors

● Black ● Red PMS 1795 ● Royal Blue PMS 2728 ○ White

PMS colors are for reference only and may vary slightly from actual color.

Setup fee: \$20.00(G); no setup fee on orders placed via our website. View current graphic templates, assembly videos and instructions on our website.

SAIL SIGNS

10.5' Razor

GOOD

Value Sail Signs

- Vibrant dye sublimation on super poly knit fabric
- Value hardware
- Value spike or Value cross base

Pole pocket is made of the same fabric as the flag.

Plastic-capped ends provide a clean finish.

9' Razor

BETTER

Streamline Sail Signs

- Vibrant dye sublimation on super poly knit fabric
- Premium hardware
- Ground spike, scissor base or three-legged base

Pole pocket is made of high tensile strength elastic polyester binding.

Rubber-tipped ends on the scissor base prevent scratching.

9' Razor

BEST

Premium Sail Signs

- Vibrant dye sublimation on super poly knit fabric
- Premium hardware
- Ground spike, scissor base or three-legged base

MAXIMIZE THE IMPACT OF YOUR MESSAGE

FRONT & BACK

Single-Sided

Reverse image shows through back.

FRONT & BACK

Double-Sided

Image on both sides with a block-out liner in between.

Your artwork will be dye sublimated on super poly knit fabric.

SAIL SIGN HARDWARE COMPARISON CHART

	POLE CONSTRUCTION	FLAG ATTACHMENT	CARRY CASE	HARDWARE WARRANTY
Value Hardware	<p>Channelled carbon composite overlay construction with low-gloss black paint finish.</p> <p>Double-reinforced carbon fiber pole segment ends.</p>	<p>A loop on the flag attaches to an adjustable hook on the pole.</p>	Sold separately	
Premium Hardware	<p>Uniform carbon composite overlay construction with high-gloss black paint finish.</p> <p>Polished aluminum collar pole segment ends and ergonomic, rubber-reinforced base grip.</p>	<p>Flag attaches to a fixed hook using a bungee cord.</p>		

Flag Warranty: Flags used outdoors have a 90-day warranty. Flags used indoors have a 1-year warranty.

SAIL SIGNS

Sail signs are built to move in the wind, making them truly hard to miss.

Value Teardrop Sail Sign

Description	Item #	1	2-5	6-11	12-24	Item #	1	2-5	6-11	12-24
6.5' Kit with Cross Base and Water Ballast	191611	151.00	146.00	139.00	134.00	191613	228.00	221.00	210.00	203.00
9.5' Kit with Cross Base and Water Ballast	191619	172.00	167.00	158.00	153.00	191621	261.00	253.00	240.00	232.00
13' Kit with Cross Base and Water Ballast	191627	226.00	219.00	208.00	201.00	191629	341.00	331.00	314.00	303.00
Kit Includes: Hardware with Specified Base and Flag (Does not include carry case)									USD MSRP (C)	

Kit Includes: Hardware with Specified Base and Flag (Does not include carry case)

USD MSRP (C)

Value Razor Sail Sign

Description	Item #	1	2-5	6-11	12-24	Item #	1	2-5	6-11	12-24
7.5' Kit with Cross Base and Water Ballast	191651	151.00	146.00	139.00	134.00	191653	228.00	221.00	210.00	203.00
10.5' Kit with Cross Base and Water Ballast	191659	172.00	167.00	158.00	153.00	191661	261.00	253.00	240.00	232.00
15' Kit with Cross Base and Water Ballast	191667	226.00	219.00	208.00	201.00	191669	341.00	331.00	314.00	303.00
Kit Includes: Hardware with Specified Base and Flag (Does not include carry case)									USD MSRP (C)	

Kit Includes: Hardware with Specified Base and Flag (Does not include carry case)

USD MSRP (C)

Streamline Teardrop Sail Sign

Description	Item #	Single-Sided Flag				Double-Sided Flag				
		1	2-5	6-11	12-24	Item #	1	2-5	6-11	12-24
6' Kit with Three-Legged Base and Water Ballast	191401	212.00	206.00	195.00	189.00	191409	293.00	284.00	270.00	261.00
8' Kit with Scissor Base and Water Ballast	191403	268.00	260.00	247.00	239.00	191411	362.00	351.00	333.00	322.00
11.5' Kit with Scissor Base and Water Ballast	191405	316.00	307.00	291.00	281.00	191413	449.00	436.00	413.00	400.00
15' Kit with Scissor Base and Water Ballast	191407	374.00	363.00	344.00	333.00	191415	542.00	526.00	505.00	489.00
Kit Includes: Hardware with Specified Base, Flag and Soft Carry Case										
USD MSRP (C)										

Kit Includes: Hardware with Specified Base, Flag and Soft Carry Case

USD MSRP (C)

Streamline Razor Sail Sign

Description	Item #	Single-Sided Flag				Double-Sided Flag				
		1	2-5	6-11	12-24	Item #	1	2-5	6-11	12-24
7' Kit with Three-Legged Base and Water Ballast	191429	212.00	206.00	195.00	189.00	191437	293.00	284.00	270.00	261.00
9' Kit with Scissor Base and Water Ballast	191431	268.00	260.00	247.00	239.00	191439	362.00	351.00	333.00	322.00
13' Kit with Scissor Base and Water Ballast	191433	316.00	307.00	291.00	281.00	191441	449.00	436.00	413.00	400.00
17' Kit with Scissor Base and Water Ballast	191435	374.00	363.00	344.00	333.00	191443	542.00	526.00	505.00	489.00
Kit Includes: Hardware with Specified Base, Flag and Soft Carry Case										USD MSRP (C)

Kit Includes: Hardware with Specified Base, Flag and Soft Carry Case

USD MSRP (C)

Premium Teardrop Sail Sign

Description	Item #	Single-Sided Flag				Double-Sided Flag				
		1	2-5	6-11	12-24	Item #	1	2-5	6-11	12-24
6' Kit with Three-Legged Base and Water Ballast	190979	238.00	231.00	219.00	212.00	190978	345.00	335.00	317.00	307.00
8' Kit with Scissor Base and Water Ballast	190763	294.00	285.00	270.00	262.00	190762	413.00	401.00	380.00	368.00
11.5' Kit with Scissor Base and Water Ballast	190765	343.00	333.00	316.00	305.00	190764	503.00	488.00	469.00	454.00
15' Kit with Scissor Base and Water Ballast	190767	398.00	386.00	370.00	358.00	190766	593.00	575.00	553.00	535.00
Kit Includes: Hardware with Specified Base, Flag and Soft Carry Case							USD MSRP (C)			

Kit Includes: Hardware with Specified Base, Flag and Soft Carry Case

USD MSRP (C)

Premium Razor Sail Sign

Description	Item #	Single-Sided Flag				Double-Sided Flag				
		1	2-5	6-11	12-24	Item #	1	2-5	6-11	12-24
7' Kit with Three-Legged Base and Water Ballast	190985	238.00	231.00	219.00	212.00	190984	345.00	335.00	317.00	307.00
9' Kit with Scissor Base and Water Ballast	190757	294.00	285.00	270.00	262.00	190756	413.00	401.00	380.00	368.00
13' Kit with Scissor Base and Water Ballast	190759	343.00	333.00	316.00	305.00	190758	503.00	488.00	469.00	454.00
17' Kit with Scissor Base and Water Ballast	190761	398.00	386.00	370.00	358.00	190760	593.00	575.00	553.00	535.00
Kit Includes: Hardware with Specified Base, Flag and Soft Carry Case								USD MSRP (C)		

Kit Includes: Hardware with Specified Base, Flag and Soft Carry Case

USD MSRP (C)

Product Size
Sizes Vary

Finished Graphic Size
View Online Template

Production Lead Time: 2 days for Streamline Sail Signs / 4 days for Value and Premium Sail Signs from final proof approval



Visit our website to see our new Blade shape Sail Sign

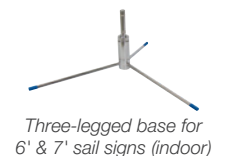
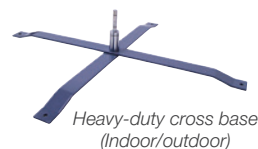
SAIL SIGN ACCESSORIES

1 YEAR
PRODUCT
WARRANTY

Sail Sign Accessories

Item #	Description	Product Wt.	1	2-5	6-11	12-24
190711	Heavy-Duty Cross Base	9 lbs.	76.00	73.70	69.90	67.60
190707	Scissor Base	7 lbs.	65.70	63.70	60.40	58.50
190714	3-Legged Base	1.25 lbs.	32.10	31.10	29.50	28.60
191591	Value Cross Base*	2.8 lbs.	31.60	30.70	29.10	28.10
190708	Round Water Ballast	0.5 lb.	43.50	42.20	40.00	38.70
190710	Square Water Ballast	0.5 lb.	43.50	42.20	40.00	38.70
220082	Universal Product Case	7 lbs.	124.00	120.00	117.00	115.00

USD MSRP (C)



*Covered by a 90-day product warranty

Hardware Lead Time: Ships same day when ordered before 2PM Central

Setup fee: \$20.00(G); no setup fee on orders placed via our website. View current graphic templates, assembly videos and instructions on our website.



BAG TOSS GAME

Toss in some friendly competition at your next event with this customizable game.

- Two game boards clasp together into a single unit that can be easily transported using the convenient carry handle
- Durable plastic construction prevents rust and splinters
- Included rope acts as a distance regulator
- Hinged legs fold out to prop the game boards up at an angle
- 90-day warranty on graphic panels



Bag Toss Game

Item #	Description	1	2-5	6-11	12-24
280310	Kit	238.00	233.00	231.00	226.00
Kit Includes: Hardware, 8 Bean Bags and 2 Graphic Panels		USD MSRP (C)			

Product Size
Folded: 21.5"W x 2.75"H x 33.125"D
(1) Open: 21.5"W x 10.5"H x 32.75"D

Finished Graphic Size
19.5"W x 29.875"H
(View Online Template)

Product Wt.
21.5 lbs.

Media
Titan™ No-Curl Laminated Media

Production Lead Time: 3 days from final proof approval



Built-in score keepers slide up and down the edges of the board.



Bean bags can be stored inside plastic molded pockets so they don't get left behind.



VALUE BAG TOSS GAME

The Value Bag Toss game packs a whole lot of fun into a budget-friendly package.

- Two game boards clasp together into a single unit that can be easily transported using the convenient carry handle
- Game boards are constructed of sturdy nylon polymer
- Detachable legs keep the game boards propped up at an angle
- Artwork is printed on a repositionable, adhesive-backed media with a textured finish
- 90-day warranty on graphic decals



Value Bag Toss Game

Item #	Description	1	2-5	6-11	12-24
280130	Kit	161.00	159.00	156.00	154.00
Kit Includes: Hardware, 8 Bean Bags and 2 Decals		USD MSRP (C)			

Product Size
Folded: 24.75"W x 3.125"H x 33.375"D
(1) Open: 21.5"W x 10.125"H x 33.625"D

Finished Graphic Size
19.875"W x 31.6875"H
(View Online Template)

Product Wt.
15.5 lbs.

Media
Surface Grip

Production Lead Time: 3 days from final proof approval



Removable decals come applied to the game board.



Bean bags can be stored inside elastic pouches so they don't get left behind.



Sliding scorekeeper on the legs counts from 00 to 21.



Setup fee: \$20.00(G); no setup fee on orders placed via our website. View current graphic templates, assembly videos and instructions on our website.

SPIN 'N WIN PRIZE WHEEL PLUS

This prize wheel provides extra messaging space above and below the wheel to familiarize showgoers with your brand, logo or campaign.

- Powder-coated steel legs
- All graphic panels can be custom printed with your design
- Includes twelve removable prize panels, one center disc panel, a top "banner" panel and a bottom "banner" panel
- US Patent #9981179

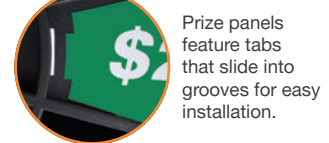
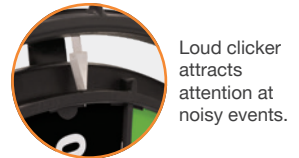


Spin 'N Win Prize Wheel Plus

Item #	Description	1	2-5	6-11	12-24
280084	Kit	666.40	648.10	631.50	610.30
Kit Includes: Hardware, Graphic Panels and Soft Carry Case				USD MSRP (C)	

Product Size	Finished Graphic Size	Product Wt.	Media
Tabletop: 31.75"W x 43.5"H x 16.5"D	View Online Template	18 lbs.	Styrene
Floor: 31.75"W x 76"H x 30.5"D			

Production Lead Time: 2 days from final proof approval



Need a Tabletop Game?

Simply remove the leg extensions to transform this prize wheel into a game suitable for tabletop use.

OUTDOOR EVENT COOLER

Keep drinks cold and your branding hot with this customizable cooler.

- Can be used indoors or outdoors
- Molded insulation keeps contents cold
- Clear lid lets you see what's inside
- Graphic is printed on Titan™ no-curl laminated media
- Holds up to 40 lbs. of ice and 48 standard 12 oz. cans

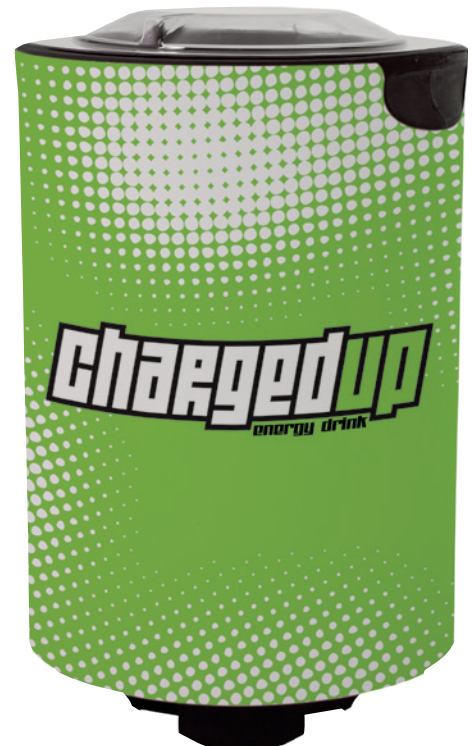


Outdoor Event Cooler

Item #	Description	1	2-5	6-11	12-24
280240	Kit	405.00	397.00	393.00	385.00
Kit Includes: Hardware and Graphic Wrap				USD MSRP (C)	

Product Size	Finished Graphic Size	Product Wt.	Media
22.125"W x 35"H x 25.125"D	View Online Template	24.25 lbs.	Titan™ No-Curl Laminated Media

Production Lead Time: 4 days from final proof approval



Setup fee: \$20.00(G); no setup fee on orders placed via our website. View current graphic templates, assembly videos and instructions on our website.



MARKETING MAT

This scratch-resistant floor mat makes your graphic stand up to even the most high-traffic areas.

- Artwork is printed on the underside of a clear mat to ensure graphic does not scratch
- Wipes clean with a damp cloth
- Certified Slip resistant (ASTM D 2047)
- Best for indoor use
- Custom sizes available (call for quote; restrictions may apply)



Marketing Mat

Item #	Description	Product Wt.	1	2-5	6-11	12-24
259100	2' x 4'	1.5 lb.	160.00	157.00	154.00	149.00
259101	3' x 5'	3.0 lb.	240.00	235.00	230.00	225.00
259102	4' x 4'	3.0 lb.	315.00	310.00	300.00	295.00
259103	4' x 6'	4.5 lb.	455.00	445.00	435.00	425.00
259104	4' x 8'	6.0 lb.	600.00	590.00	575.00	560.00

USD MSRP (C)

Production Lead Time: 7 days from final proof approval



Vinyl is finished with non-slip backing for stability.



Finished with rounded corners.



FLOOR DECOR

High-quality, foam-backed flooring is extremely durable, and it's perfect for grabbing attention in lobbies or at events.

- Artwork is printed on one side of the Floor Decor
- Lays flat for a clean, smooth look
- Wipes clean with a damp cloth
- Custom sizes and shapes available (call for quote; restrictions may apply)
- Best for indoor use
- Custom sizes available (call for quote; restrictions may apply)
- 10' x 10' and 9' round Floor Decor must ship by truck

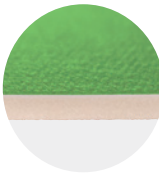


Floor Decor

Item #	Description	Weight	1	2-5	6-11	12-24
259058	3' x 3' Floor Decor	1.6 lbs.	217.00	208.00	200.00	191.00
259059	3' Round Floor Decor	1.2 lbs.	217.00	208.00	200.00	191.00
259050	8' x 8' Floor Decor	14 lbs.	870.00	855.00	835.00	810.00
259051	8' x 10' Floor Decor	17 lbs.	870.00	855.00	835.00	810.00
259053	9' Round Floor Decor	14 lbs.	1035.00	1015.00	995.00	965.00
259052	10' x 10' Floor Decor	22 lbs.	1035.00	1015.00	995.00	965.00

USD MSRP (C)

Production Lead Time: 3 days from final proof approval



2.4 mm PVC-coated fabric is backed with PVC foam.



Finished with rounded corners.

FLOOR HUGGER MAT

Put quality designs right at your feet. The Floor Hugger mat features a nylon yarn surface with black rubber borders and backing.

- Treated with Stainstopper™ and static dissipative
- Will not crack or curl
- Mat sizes are not exact; allow 3-5% size variance
- Not eligible for Rush Service



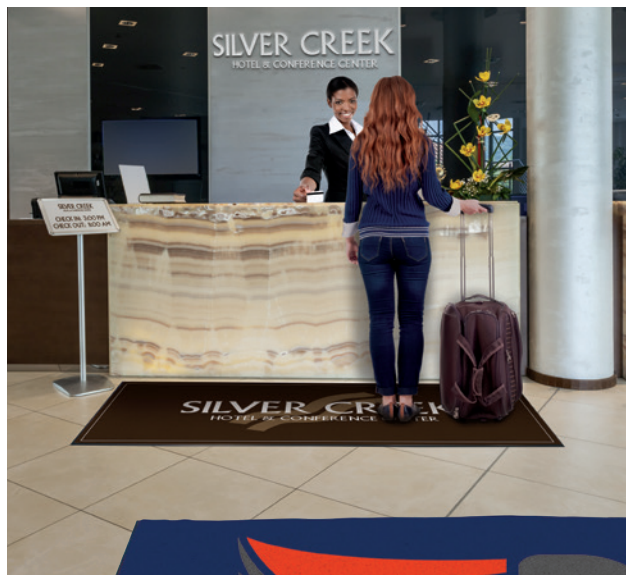
Floor Hugger Mat

Item #	Description	Product Wt.	1	2-5	6-10	11-25
259000	3' x 5' Mat	8 lbs.	272.00	201.00	172.00	167.00
259001	3' x 10' Mat	16 lbs.	447.00	389.00	335.00	324.00
259002	4' x 6' Mat	12 lbs.	348.00	305.00	261.00	252.00

USD MSRP (C)

Item has limited number of available colors (150). We cannot guarantee color matching. Test strip/match print/test grid not available.

Production Lead Time: 7 days from final proof approval



Mat features chemical-resistant plush carpet.



INDOOR SURFACE GRIP

This temporary floor or wall decal works on a variety of surface types, even carpet.

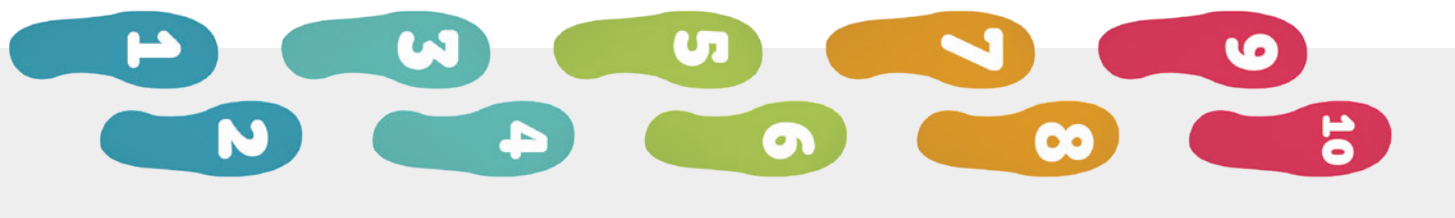
- Textured matte vinyl with fabric backing and solvent acrylic adhesive
- Rounded corners for a finished look
- Easy to apply and remove
- Footprints come in sets of ten; different artwork can be applied to each footprint
- One-year warranty when used on walls; 30-day warranty when used on floors
- Certified slip resistant (ASTM D-2047 & R12)
- Custom sizes and shapes available (call for quote; restrictions may apply)

Indoor Surface Grip

Item #	Description	Product Wt.	1	2-5	6-11	12-24
259060	2' x 4'	0.6 lb.	65.10	63.80	61.80	59.90
259065	3' x 5'	1.2 lbs.	129.00	124.00	119.00	114.00
259066	3' x 8'	2 lbs.	193.00	185.00	178.00	170.00
259061	4' x 4'	1.2 lbs.	131.00	126.00	121.00	115.00
259067	4' x 6'	1.4 lbs.	176.00	169.00	162.00	155.00
259062	4' x 8'	2.4 lbs.	255.00	245.00	235.00	224.00
259063	42" Circle	0.6 lb.	131.00	126.00	121.00	115.00
259064	72" x 42" Arrow	0.8 lb.	310.00	305.00	300.00	290.00
259088	Footprints (Set of 10)	0.2 lb.	34.80	34.10	33.10	32.00

USD MSRP (C)

Production Lead Time: 3 days from final proof approval



Setup fee: \$20.00(G); no setup fee on orders placed via our website. View current graphic templates, assembly videos and instructions on our website.



Collapsible aluminum frame makes it easy to take down and store when not in use.



MDF countertop and internal shelf with woodgrain laminate.



Countertop folds in half for convenient storage.



Hook-and-loop fasteners make it easy to install the graphic panel.

COUNTERPOP

Combining the features of a counter and a pop-up display, the CounterPop is a truly multifunctional display.

- Artwork is dye sublimated on polyester knit
- Countertop supports up to 30 lbs.; internal shelf supports up to 10 lbs.



CounterPop

Item #	Description	1	2-5	6-11	12-24
257055	Kit	484.00	473.00	456.00	445.00
Kit Includes: Hardware, Graphic Panel and Soft Carry Case				USD MSRP (C)	

Product Size	Finished Graphic Size	Product Wt.	Media
41.75"W x 40"H x 15.75"D	View Online Template	22.25 lbs.	Polyester Knit

Production Lead Time: 4 days from final proof approval

SHOWGOER CASE-TO-PODIUM

Take your display on the go. This podium converts into a wheeled case for simple, worry-free transportation.

- Dye-sublimated wrap slides on for easy setup
- Durable, roto-molded case
- Removable top and built-in tray for quick access to your show materials
- Countertop supports up to 20 lbs.



ShowGoer Case-to-Podium

Item #	Description	1	2-5	6-11	12-24
257030	Kit	545.00	535.00	525.00	505.00
257031	Hard Case with Wheels Only	330.00	325.00	320.00	310.00
Kit Includes: Hard Case with Wheels and Graphic Wrap				USD MSRP (C)	

Product Size	Finished Graphic Size	Product Wt.	Media
38.375"W x 34.875"H x 16.875"D	View Online Template	27.5 lbs.	Two-Way Stretch Fabric

Production Lead Time: 4 days from final proof approval



Stunning on the show floor, convenient in storage.



Holds up to three 24"-33.5" Economy retractors.



Wheels and pull-up handle make transport easy.



SHOWGLOWER PODIUM

Shine some light on your message or brand with this backlit podium.

- The MDF tabletop offers a great deal of usable surface
- Silicone edge graphics (SEG) for easy graphic panel installation
- Artwork is dye sublimated on premium woven polyester
- Countertop supports up to 30 lbs.

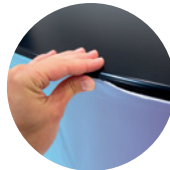


ShowGlower Podium

Item #	Description	1	2-5	6-11	12-24
257064	Kit	700.00	681.00	662.00	643.00
Kit Includes: Hardware, Ladder Lights, Graphic Panel and Soft Carry Case		USD MSRP (C)			

Product Size	Finished Graphic Size	Product Wt.	Media
31.5"W x 39.75"H x 20.875"D	View Online Template	31.5 lbs.	Premium Woven Polyester

Production Lead Time: 4 days from final proof approval



With a quick press of your thumb, the fabric's gasket edge is pushed into a narrow channel built into the countertop and base.



LED ladder lights give this display a warm, pleasant glow.

IMPRESS COUNTERS

These easy-to-assemble counters feature your full-color artwork on the outside and storage space on the inside.

- Silicone edge graphics (SEG) for easy graphic panel installation
- Artwork is dye sublimated on two-way stretch fabric
- Black MDF countertop
- Countertop supports up to 20 lbs.



Impress Rectangle Counter

Item #	Description	1	2-5	6-11	12-24
257047	Kit	455.00	441.00	428.00	414.00
Kit Includes: Hardware, Graphic Panel and Soft Carry Case		USD MSRP (C)			

Product Size	Finished Graphic Size	Product Wt.	Media
31.5"W x 39.75"H x 20.875"D	View Online Template	23.5 lbs.	Two-Way Stretch Fabric

Impress Oval Counter

Item #	Description	1	2-5	6-11	12-24
257044	Kit	402.00	390.00	378.00	366.00
Kit Includes: Hardware, Graphic Panel and Soft Carry Case		USD MSRP (C)			

Product Size	Finished Graphic Size	Product Wt.	Media
23.375"W x 39.75"H x 15.5"D	View Online Template	16 lbs.	Two-Way Stretch Fabric

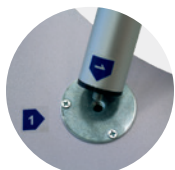
Production Lead Time: 4 days from final proof approval



Oval



Rectangle



Threaded poles twist together for easy setup.



With a quick press of your thumb, the fabric's gasket edge is pushed into a narrow channel built into the countertop and base.



Zippered back creates an enclosed storage area.



Rubber feet for stability.

Setup fee: \$20.00(G); no setup fee on orders placed via our website. View current graphic templates, assembly videos and instructions on our website.

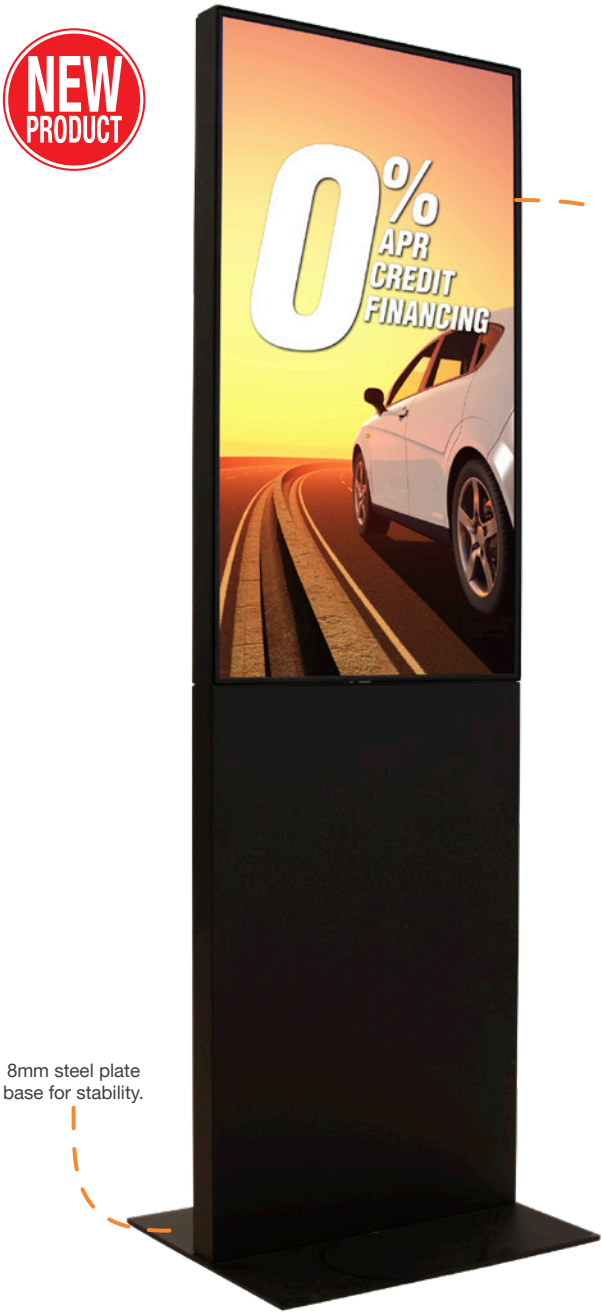
OPULENT DIGITAL DISPLAYS

Our first fully-digital product, these opulent displays feature a high-end LED Samsung monitor that gives you the freedom to change your message.

- Create your own dynamic digital content to make a lasting first impression
- Excellent for featuring company videos and slideshows, daily events, special welcoming messages or way-finding directories
- Digital content can be played on a loop, allowing you to communicate more than one message
- Heavy-duty construction allows for long-term use in one location
- Display is single-sided
- Remote control included
- No assembly required
- Must ship by truck

1 YEAR
PRODUCT
WARRANTY

NEW
PRODUCT



8mm steel plate
base for stability.



Sleek and slim steel
frame keeps display
sturdy and provides
a streamlined look.



13° angle



Wheels on the
frame make it easy
to move display
across the floor.

Opulent Digital Tower

Item #	Description	1	2-5	6-11	12-24
257134	Kit	3800.00	3725.00	3650.00	3535.00
Kit Includes: Hardware and Installed Monitor		USD MSRP (C)			

Product Size 22.125"W x 71.375"H x 18"D
Monitor Size 43"
Product Wt. 109 lbs.

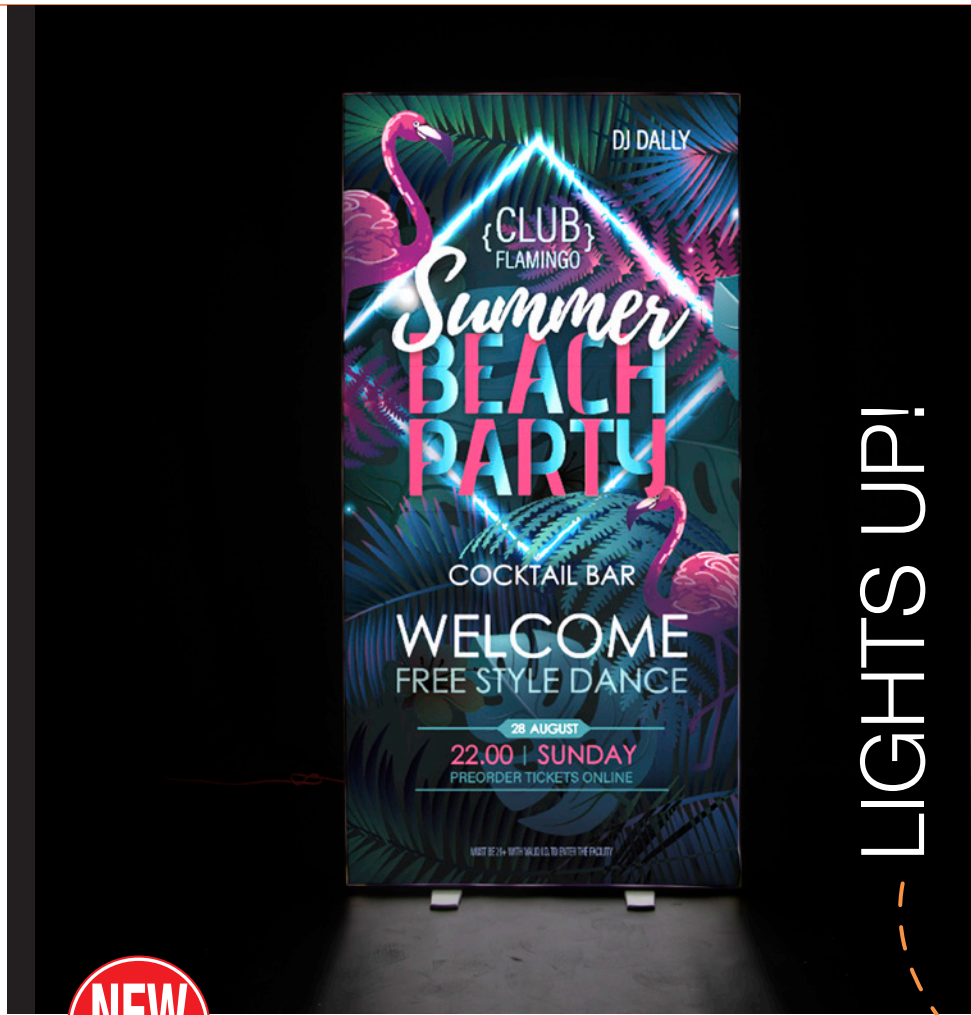
Hardware Lead Time: Ships same day when ordered before 2PM Central

Opulent Digital Incline

Item #	Description	1	2-5	6-11	12-24
257131	Kit	3400.00	3330.00	3265.00	3160.00
Kit Includes: Hardware and Installed Monitor		USD MSRP (C)			

Product Size 22"W x 48.75"H x 18"D
Monitor Size 43"
Product Wt. 63 lbs.

Hardware Lead Time: Ships same day when ordered before 2PM Central



LIGHTS UP!



FUSION GLO

This light-up display is incredibly simple to set up so you're ready when it's glow time.

- Artwork is dye sublimated on premium polyester
- Includes two graphic panels for a double-sided display
- Silicone Edge Graphics (SEG) for easy graphic panel installation



Fusion Glo

Item #	Description	1	2-5	6-11	12-24
280420	4' x 4' Kit	875.00	840.00	805.00	761.00
254430	3' x 6.5' Kit	875.00	840.00	805.00	761.00

Kit Includes: Hardware and 2 Graphic Panels USD MSRP (C)

Description	Product Size	Finished Graphic Size	Product Wt.	Media
4' x 4'	51.25"W x 51.75"H x 16"D	View Online Template	25.2 lbs.	Premium Polyester
3' x 6.5'	39.5"W x 79.25"H x 16"D	View Online Template	27.6 lbs.	Premium Polyester

Production Lead Time: 4 days from final proof approval



Lightweight aluminum frame has locking levers for a tool-free assembly.



With a quick press of your thumb, the fabric's gasket edge is pushed into narrow channels built into the frame.



LED lights on the top and bottom of the display create a soothing glow effect.

4' x 4' can also be used as a tabletop display.



Setup fee: \$20.00(G); no setup fee on orders placed via our website. View current graphic templates, assembly videos and instructions on our website.



Channel bars slide into grooves in the hubs.

With a quick press of your thumb, the fabric's gasket edge is pushed into the channel bars.

Graphic panels cover three sides of the display.

Thumbscrews on the bottom of the frame slip into a notch on the foot.

A fourth graphic panel (sold separately) can be added to the back, no extra channel bars required.

8'

8' back view



VERGE DISPLAY

This display's modern design and crisp edges give your message an elegant, upscale look.

- Artwork is dye sublimated on polyester knit
- Silicone edge graphics (SEG) for easy graphic panel installation
- Heavy-duty aluminum frame pops open like a standard pop-up display
- Tabletop version available online

2 YEAR
HARDWARE
WARRANTY

Verge Display

Item #	Description	1	2-5	6-11	12-24
254550	8' Kit	1375.00	1350.00	1305.00	1275.00
254555	10' Kit	1580.00	1550.00	1500.00	1470.00
Kit Includes: Frame, 3 Graphic Panels and Soft Carry Case with Wheels		USD MSRP (C)			
Description	Product Size	Finished Graphic Size	Product Wt.	Media	
8'	88.75"W x 89.5"H x 23.25"D	View Online Template	34 lbs.	Polyester Knit	
10'	117.75"W x 89.5"H x 23.25"D	View Online Template	39.5 lbs.	Polyester Knit	

Production Lead Time: 4 days from final proof approval



LIGHTS UP!

VERGE GLO DISPLAY

The illuminated version of the Verge adds LED lights to the display's cutting-edge look.

- Artwork is dye sublimated on premium woven polyester
- Silicone edge graphics (SEG) for easy graphic panel installation
- Heavy-duty aluminum frame pops open like a standard pop-up display
- Thumbscrews on the bottom of the frame slip into a notch on the foot
- Graphic panels cover three sides of the display
- A fourth graphic panel (sold separately) can be added to the back, no extra channel bars required
- Tabletop version available online



Verge Glo Display

Item #	Description	1	2-5	6-11	12-24
254551	8' Kit	2290.00	2250.00	2175.00	2125.00
254556	10' Kit	2955.00	2900.00	2805.00	2750.00
Kit Includes: Frame, Ladder Lights, 3 Graphic Panels and Soft Carry Case with Wheels		USD MSRP (C)			

Description	Product Size	Finished Graphic Size	Product Wt.	Media
8'	88.75"W x 89.5"H x 23.25"D	View Online Template	69.5 lbs.	Premium Woven Polyester
10'	117.75"W x 89.5"H x 23.25"D	View Online Template	87 lbs.	Premium Woven Polyester

Production Lead Time: 4 days from final proof approval

Each column of ladder lights can be lit separately and has its own power cord.



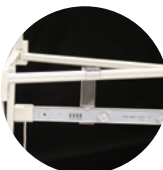
10' back view



Channel bars slide into grooves in the hubs.



With a quick press of your thumb, the fabric's gasket edge is pushed into the channel bars.



The included LED ladder lights attach to the inside of the display using plastic hooks.



LED ladder lights can be daisy-chained together vertically to create columns.

Setup fee: \$20.00(G); no setup fee on orders placed via our website. View current graphic templates, assembly videos and instructions on our website.



12-Quad Classic



Graphic panels are finished with white stitching.



Shelf has rounded corners and supports up to 15 lbs.



Deluxe GeoMetrix pegs hold up to six panels each.

DELUXE GEOMETRIX DISPLAY

A strong, durable frame supports multiple graphic panels and shelves so you have countless options for setting up a creative display.

- Setup and teardown can be done in seconds
- Artwork is dye sublimated on polyester double knit
- Aluminum frame with nylon plastic hubs
- Additional kits and graphic panel kits are available online
- US Patent #9214104



Deluxe GeoMetrix Displays		1	2-5	6-11	12-24
Item #	Description				
342010	3-Quad Tower Kit	620.00	610.00	595.00	585.00
342004	9-Quad Header Kit	1360.00	1330.00	1300.00	1270.00
342000	12-Quad Classic Kit	1605.00	1575.00	1545.00	1515.00
Kit Includes: Frame, Graphic Panels, Internal Shelf(s) and Soft Carry Case		USD MSRP (C)			
Shelves do not fit in provided soft carry case.					
See website for shelf soft carry case.					
Description	Product Size	Finished Graphic Size	Product Wt.	Media	
3-Quad Tower	31.25"W x 89.5"H x 13"D	View Online Template	11 lbs.	Polyester Double Knit	
9-Quad Header	90"W x 89.5"H x 13"D	View Online Template	27 lbs.	Polyester Double Knit	
12-Quad Classic	118"W x 89.5"H x 13"D	View Online Template	30.5 lbs.	Polyester Double Knit	

Production Lead Time: 4 days from final proof approval



3-Quad Tower



9-Quad Header

Ultimate LED Double Light Kit

Item #	1	2-5	6-11	12-24
150121	270.00	260.00	255.00	245.00

Kit Includes: Lights, Clamps, Clips, USB Adapter and Soft Carry Case

Hardware ships same day when ordered before 2PM Central



Add-Ons



Patent Pending

Deluxe GeoMetrix Internal Shelves

Item #	Description	1	2-5	6-11	12-24
338050	Internal Shelf	111.00	109.00	106.00	102.00
338068	Clear Internal Shelf	118.00	114.00	111.00	107.00

Internal shelves support up to 15 lbs.

Hardware ships same day when ordered before 2PM Central



3' with wrap graphic panel

10' with face graphic panel

20' with wrap graphic panel

SPLASH DISPLAY

This pop-up display transforms from a compact unit to an impressive backdrop in minutes.

- Graphic panels available in polyester knit or block-out fabric
- Hook-and-loop fasteners make graphic panel installation simple
- Aluminum frame with nylon plastic hubs
- Additional sizes available online
- US Patent #9214104



Splash Straight Floor Display

Item #	Description	Product Wt.	1	2-5	6-11	12-24
341040	3' Polyester Knit Face Kit	9.4 lbs.	395.00	380.00	365.00	350.00
342200	3' Block-Out Fabric Face Kit	9.5 lbs.	485.00	470.00	455.00	440.00
341041	3' Polyester Knit Wrap Kit	10.25 lbs.	475.00	460.00	445.00	430.00
342201	3' Block-Out Fabric Wrap Kit	10.25 lbs.	560.00	540.00	520.00	500.00
Kit Includes: Frame, Graphic Panel and Soft Carry Case			USD MSRP (C)			
341008	10' Polyester Knit Face Kit	23.75 lbs.	1170.00	1150.00	1130.00	1115.00
342212	10' Block-Out Fabric Face Kit	24.5 lbs.	1250.00	1230.00	1210.00	1190.00
341009	10' Polyester Knit Wrap Kit	24.75 lbs.	1365.00	1345.00	1325.00	1310.00
342213	10' Block-Out Fabric Wrap Kit	26 lbs.	1440.00	1420.00	1400.00	1380.00
Kit Includes: Frame, Graphic Panel and Soft Carry Case			USD MSRP (C)			
341029	20' Polyester Knit Wrap Kit	47.75 lbs.	2155.00	2125.00	2095.00	2065.00
342216	20' Block-Out Fabric Wrap Kit	49 lbs.	2215.00	2185.00	2155.00	2125.00
20' Kits Include: 2 Frames, Graphic Panel and 2 Soft Carry Cases			USD MSRP (C)			

Description	Product Size	Finished Graphic Size
3'	31"W x 89.5"H x 12.25"D	View Online Template
10'	119"W x 89.5"H x 12.25"D	View Online Template
20'	237"W x 89.5"H x 12.25"D	View Online Template

Production Lead Time: 3 days from final proof approval

Kit Options



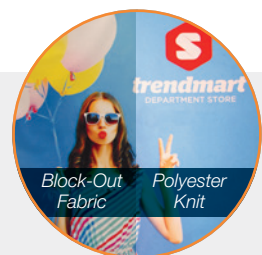
Face Graphic Kit
Graphic panel covers the front of the frame.



Wrap Graphic Kit
Graphic panel covers the front and two sides of the frame. Back of the frame is not covered.

Block-Out Fabric

Block-out fabric is designed to prevent light from showing through the display. It is a good option for brightly lit areas.



Setup fee: \$20.00(G); no setup fee on orders placed via our website. View current graphic templates, assembly videos and instructions on our website.

FLOOR DISPLAYS

EUROFIT WALLS

The ever-expanding EuroFit line offers many elegant and versatile display solutions.

- Artwork is vibrantly dye sublimated on polyester knit
- Hinge together several separate EuroFit displays with the EuroFit Connector
- Create modular layouts with limitless possibilities
- More options available online



EuroFit Features & Benefits



Joints are labeled for step-by-step frame assembly.



Push-button connectors make assembly easy.



Select displays feature a heavy-duty zipper that secures the graphic cover.



US Patent
#9637963

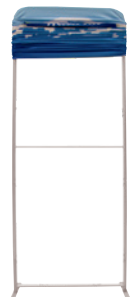
Compatible displays can be hinged together using the EuroFit Connector.



Soft carry case included with all kits.

EASE OF SETUP

Double-sided graphic covers easily slide on and off.



Setup fee: \$20.00(G); no setup fee on orders placed via our website. View current graphic templates, assembly videos and instructions on our website.

showdowndisplays.com

72"H EuroFit Straight Wall

Item #	Description	1	2-5	6-11	12-24
256203	2'W Kit	208.00	201.00	196.00	189.00
256205	2'W Graphic Cover	85.00	82.00	80.00	77.00
256212	3'W Kit	275.00	264.00	253.00	238.00
256214	3'W Graphic Cover	128.00	121.00	115.00	104.00
256221	4'W Kit	348.00	337.00	327.00	316.00
256223	4'W Graphic Cover	185.00	179.00	174.00	168.00
256230	5'W Kit	433.00	420.00	407.00	394.00
256232	5'W Graphic Cover	230.00	223.00	216.00	209.00
256239	8'W Kit	586.00	568.00	551.00	533.00
256241	8'W Graphic Cover	332.00	322.00	312.00	302.00

Kit Includes: Hardware, Graphic Cover, EuroFit Connector and Soft Carry Case USD MSRP (C)

Description	Product Size	Finished Graphic Size	Product Wt.	Media
2'W	24.5"W x 72"H x 19"D	View Online Template	7.5 lbs.	Polyester Knit
3'W	36.5"W x 72"H x 19"D	View Online Template	8.25 lbs.	Polyester Knit
4'W	48.5"W x 72"H x 19"D	View Online Template	9.5 lbs.	Polyester Knit
5'W	60.5"W x 72"H x 19"D	View Online Template	11 lbs.	Polyester Knit
8'W	96.5"W x 72"H x 19"D	View Online Template	15.5 lbs.	Polyester Knit

Production Lead Time: 4 days from final proof approval



90"H EuroFit Straight Wall

Item #	Description	1	2-5	6-11	12-24
256206	2'W Kit	247.00	240.00	232.00	225.00
256208	2'W Graphic Cover	112.00	109.00	105.00	102.00
256215	3'W Kit	332.00	322.00	313.00	302.00
256217	3'W Graphic Cover	174.00	169.00	164.00	158.00
256224	4'W Kit	433.00	420.00	407.00	394.00
256226	4'W Graphic Cover	230.00	223.00	216.00	209.00
256233	5'W Kit	500.00	485.00	471.00	455.00
256235	5'W Graphic Cover	275.00	267.00	259.00	250.00
255180	8'W Kit	760.00	737.00	714.00	692.00
255182	8'W Graphic Cover	394.00	382.00	370.00	359.00
256251	10'W Kit	1335.00	1310.00	1270.00	1245.00
256253	10'W Graphic Cover	800.00	785.00	760.00	745.00
256427	20'W Kit	2635.00	2605.00	2505.00	2475.00
256429	20'W Graphic Cover	1585.00	1555.00	1505.00	1475.00

Kit Includes: Hardware, Graphic Cover, EuroFit Connector and Soft Carry Case USD MSRP (C)

20' Display Includes: Hardware, Graphic Cover, 2 EuroFit Connectors and 2 Soft Carry Cases

Description	Product Size	Finished Graphic Size	Product Wt.	Media
2'W	24.5"W x 91.25"H x 19"D	View Online Template	9.25 lbs.	Polyester Knit
3'W	36.5"W x 91.25"H x 19"D	View Online Template	10.3 lbs.	Polyester Knit
4'W	48.5"W x 91.25"H x 19"D	View Online Template	11.4 lbs.	Polyester Knit
5'W	60.5"W x 91.25"H x 19"D	View Online Template	12.6 lbs.	Polyester Knit
8'W	96.5"W x 91.25"H x 19"D	View Online Template	18 lbs.	Polyester Knit
10'W	115.5"W x 91.25"H x 19"D	View Online Template	21.25 lbs.	Polyester Knit
20'W	231"W x 91.25"H x 19"D	View Online Template	42.75 lbs.	Polyester Knit

Production Lead Time: 4 days from final proof approval



EuroFit Incline Wall

Item #	Description	1	2-5	6-11	12-24
256320	2'W Kit	247.00	240.00	232.00	225.00
256322	2'W Graphic Cover	112.00	109.00	105.00	102.00
256323	3'W Kit	332.00	322.00	313.00	302.00
256325	3'W Graphic Cover	174.00	169.00	164.00	158.00
256326	4'W Kit	433.00	420.00	407.00	394.00
256328	4'W Graphic Cover	230.00	223.00	216.00	209.00
256329	5'W Kit	500.00	485.00	471.00	455.00
256331	5'W Graphic Cover	275.00	267.00	259.00	250.00
256332	8'W Kit	760.00	737.00	714.00	692.00
256334	8'W Graphic Cover	394.00	382.00	370.00	359.00

Kit Includes: Hardware, Graphic Cover, EuroFit Connector and Soft Carry Case USD MSRP (C)

Description	Product Size	Finished Graphic Size	Product Wt.	Media
2'W	24.5"W x 91"H x 19"D	View Online Template	9.25 lbs.	Polyester Knit
3'W	36.5"W x 91"H x 19"D	View Online Template	10 lbs.	Polyester Knit
4'W	48.5"W x 91"H x 19"D	View Online Template	12.5 lbs.	Polyester Knit
5'W	60.5"W x 91"H x 19"D	View Online Template	14 lbs.	Polyester Knit
8'W	96.5"W x 91"H x 19"D	View Online Template	18 lbs.	Polyester Knit

Production Lead Time: 4 days from final proof approval



TABLETOP DISPLAYS

US Patent #9637963

Hinge together multiple EuroFit displays with the included EuroFit Connector.

Double-sided graphic cover slips over the frame like a pillowcase.

Smaller feet than floor displays take up less room on a table.

Joints are labeled for step-by-step frame assembly.

2' and 3' kits on a 6' Standard throw (sold separately; see page 3)

EUROFIT TABLETOP STRAIGHT WALL

Everything you love about a EuroFit Straight Wall, featured in three popular tabletop models.

- Artwork is dye sublimated on polyester knit
- Fabric contours to the frame for a form-fitted look
- Lightweight aluminum frame
- Push-button connectors make assembly a snap
- Floor display kits also available (see page 28-29)



EuroFit Tabletop Straight Wall

Item #	Description	1	2-5	6-11	12-24
254603	2'W Kit	167.00	162.00	157.00	152.00
254605	2'W Graphic Cover	64.00	62.00	60.00	58.00
254606	3'W Kit	214.00	207.00	201.00	194.00
254608	3'W Graphic Cover	95.00	92.00	89.00	86.00
254615	6'W Kit	420.00	407.00	395.00	382.00
254617	6'W Graphic Cover	235.00	228.00	221.00	214.00

Kit Includes: Hardware, Graphic Cover, EuroFit Connector and Soft Carry Case USD MSRP (C)

Description	Product Size	Finished Graphic Size	Product Wt.	Media
2'W	24.375"W x 49.5"H x 11.75"D	View Online Template	6.2 lbs.	Polyester Knit
3'W	36.5"W x 49.5"H x 11.75"D	View Online Template	7.6 lbs.	Polyester Knit
6'W	72.25"W x 49.5"H x 11.75"D	View Online Template	9.8 lbs.	Polyester Knit

Production Lead Time: 4 days from final proof approval

Frame converts from 74.5" to 98"W

Frame converts from 44" to 68.25"H

6' Header kit on a 6' UltraFit Curve throw (sold separately; see page 4)

Kit Options

Header

Short Back Wall

Tall Back Wall

OVER-THE-TOP DISPLAY

Create an overhead banner or a stylish backdrop by simply clamping this display to a table.

- Artwork is dye sublimated on polyester knit
- Double-sided cover is viewable from both the front and back of the display
- Lightweight, durable carbon composite poles with aluminum corners



Over-The-Top Display

Item #	Description	1	2-5	6-11	12-24
280320	6' Header Kit	315.00	375.00	360.00	350.00
280321	8' Header Kit	410.00	400.00	385.00	375.00
280322	6' Short Back Wall Kit	425.00	415.00	400.00	390.00
280323	8' Short Back Wall Kit	455.00	445.00	430.00	420.00
280324	6' Tall Back Wall Kit	455.00	445.00	430.00	420.00
280325	8' Tall Back Wall Kit	475.00	465.00	450.00	440.00
280331	Two Floor Bases with Pole Posts	93.00	87.00	81.00	76.00

Kit Includes: Frame, Graphic Cover and Soft Carry Case USD MSRP (C)

Description	Product Size	Finished Graphic Size	Product Wt.	Media
6' Header	74.5"W x 44" or 68.25"H x 2.875"D	View Online Template	9.75 lbs.	Polyester Knit
8' Header	98"W x 44" or 68.25"H x 2.875"D	View Online Template	10 lbs.	Polyester Knit
6' Short Back Wall	74.5"W x 44"H x 2.875"D	View Online Template	11 lbs.	Polyester Knit
8' Short Back Wall	98"W x 44"H x 2.875"D	View Online Template	11.75 lbs.	Polyester Knit
6' Tall Back Wall	74.5"W x 68.25"H x 2.875"D	View Online Template	12 lbs.	Polyester Knit
8' Tall Back Wall	98"W x 68.25"H x 2.875"D	View Online Template	13.25 lbs.	Polyester Knit

Production Lead Time: 4 days from final proof approval



The easy-to-use clamp system attaches to any table up to 2.5" thick. No tools required.



Use as a freestanding display by adding floor bases (sold separately, available online).

MICRO GEOMETRIX DISPLAY

Create a variety of multi-dimensional displays in seconds with the Micro GeoMetrix.

- Lightweight aluminum frame with plastic hubs
- Artwork is dye sublimated on polyester double knit
- Additional kits, graphic panels, and hardware available online



Micro GeoMetrix Classic

Item #	Description	1	2-5	6-11	12-24
337207	Kit	410.00	405.00	400.00	395.00
Kit Includes: Nine-Quad Square Frame, 5 Graphic Panels and Soft Carry Case				USD MSRP (C)	

Product Size	Finished Graphic Size	Product Wt.	Media
46"W x 46.75"H x 9.62"D	View Online Template	9.25 lbs.	Polyester Double Knit

Production Lead Time: 4 days from final proof approval



Add-On

Micro GeoMetrix Shelf

Item #	Description	1	2-5	6-11	12-24
338069	Straight Internal Clear Shelf	36.10	34.30	33.20	31.80
Each shelf supports up to 5 lbs.				USD MSRP (C)	
Compatible with frames equipped with locking arms only.					

Shown on a 6' Standard throw and 57" dye-sublimated Accent Runner (throw and runner sold separately)



MINI TABLETOP DISPLAYS

These displays fit into small areas, making them perfect for tables and countertops.

- Lightweight and portable
- Warranties range between six and three years (see website for details)
- Kit contents vary (see website for details)

Mini Retractors

Item #	Description	1	2-5	6-11	12-24
262014	Deluxe Mini Kit	60.00	58.75	57.25	56.00
210240	Small Mini Promo Kit	46.50	44.00	43.00	41.00
210242	Large Mini Promo Kit	52.00	49.50	48.00	46.00
261130	Economy Tabletop No-Curl Hybrid Media Kit	173.00	161.00	150.00	138.00
262160	Economy Tabletop No-Curl Opaque Fabric Kit	173.00	161.00	150.00	138.00
261195	MagnaLink Tabletop Kit	230.00	216.00	205.00	191.00
				USD MSRP (C)	

Product Size	Finished Graphic Size
Sizes Vary	View Online Template

Production Lead Time: 2-4 days from final proof approval

Mini Displays

Item #	Description	1	2-5	6-11	12-24
280370	EuroFit Mini Kit Double-Sided Kit	77.30	75.00	72.60	70.40
210032	Mini X Banner Display Kit	29.90	28.40	27.50	26.30
210245	Monopode Tabletop Kit	112.80	106.10	100.30	93.60
263360	Countertop Wood Chalkboard Small Kit	43.40	42.10	40.10	39.10
263363	Countertop Wood Chalkboard Large Kit	48.50	47.00	44.80	43.60
263081	FrameWorx Tabletop 13 oz. Smooth Scrim Vinyl Single-Sided Kit	101.60	96.60	93.40	89.40
263082	FrameWorx Tabletop 13 oz. Smooth Scrim Vinyl Double-Sided Kit	118.60	112.70	109.10	104.40
263084	FrameWorx Tabletop No-Curl Opaque Fabric Single-Sided Kit	129.80	123.40	119.40	114.20
				USD MSRP (C)	

Item #	Description	1	5	6-11	12-24
191540	Micro Teardrop Sail Sign Single-Sided Kit	NA	42.90	41.60	39.50
191541	Micro Teardrop Sail Sign Double-Sided Kit	NA	68.68	66.80	63.40
				USD MSRP (C)	

Setup fee: \$20.00(G); no setup fee on orders placed via our website. View current graphic templates, assembly videos and instructions on our website.

VINYL & FABRIC BANNERS

NO SETUP FEES

ALL YEAR*

PROMO CODE S20BFSU12



- NO setup fees!*
- Wide variety of materials
- Available for delivery in as little as two days

See pages 66-72 in the 2020 in our Product Guide for details.

**Must use promo code when ordering*

Table Covers
Page 2

Retractable Banners
Page 6

Banner Displays
Page 10

Banners
Page 12

Tents
Page 13

Sail Signs
Page 14

Event Products
Page 16

Signage
Page 18

Stands & Furniture
Page 20

Floor Displays
Page 23

Tabletop Displays
Page 30

Distributed by:



**WE'RE BEYOND COMPLIANT.
WE'RE APPROVED!**

One of the pillars of our On Target Guarantee is a Commitment to Safety and Quality. In keeping true to this, all of our 2020 catalog products are not just Prop 65 compliant — they are actually approved. They have met and passed all Prop 65 testing standards. This means no warning labels are necessary and no worries for California sales.

Valid through December 31, 2020

#295655