

BEST SELLERS

2021

FLOOR DISPLAYS



DISPLAY SOLUTIONS

PROMOTIONS • EVENTS • TRADE SHOWS

TABLE COVERS



6' with full-color
full-bleed



Covers three sides
of the table with a
9" overhang in back.



Underside of
material is blank.

ECONOMY TABLE THROW

The open-back design of this throw gives you legroom and quick access to anything you store beneath the table.

- Offers a large maximum imprint area for more graphic coverage on full-color front only throws
- Draped corners
- Polyester poplin
- Machine-washable and wrinkle-resistant
- Flame retardant treated (FR rated for exhibit halls)



Full-Color Front Only

| Item # | Description | 1 | 2-5 | 6-11 | 12-24 |
|--------|------------------|--------|--------|--------|--------|
| 106045 | 4' Economy Throw | 130.00 | 113.10 | 106.60 | 97.50 |
| 106002 | 6' Economy Throw | 182.00 | 158.30 | 149.20 | 136.50 |
| 106014 | 8' Economy Throw | 202.00 | 175.70 | 165.60 | 151.50 |

Stock fabric colors with full-color artwork printed on front.
Artwork cannot exceed maximum size requirements.

| Description | Table Size | Front Only Graphic Size | Product Wt. |
|-------------|-----------------------|-------------------------|-------------|
| 4' | 48"W x 29"H x 29.75"D | 40"W x 25"H | 1.25 lbs. |
| 6' | 72"W x 29"H x 29.75"D | 64"W x 25"H | 2 lbs. |
| 8' | 96"W x 29"H x 29.75"D | 64"W x 25"H | 2.5 lbs. |

Production Lead Time: 2 days from final proof approval

Full-Color Full-Bleed

| Item # | Description | 1 | 2-5 | 6-11 | 12-24 |
|--------|------------------|--------|--------|--------|--------|
| 106042 | 4' Economy Throw | 133.10 | 115.80 | 109.10 | 99.80 |
| 106010 | 6' Economy Throw | 187.50 | 163.10 | 153.80 | 140.60 |
| 106022 | 8' Economy Throw | 208.10 | 181.00 | 170.60 | 156.10 |

White fabric fully dye sublimated with full-color artwork.

| Description | Table Size | Full-Bleed Graphic Size | Product Wt. |
|-------------|-----------------------|-------------------------|-------------|
| 4' | 48"W x 29"H x 29.75"D | View Online Template | 1.25 lbs. |
| 6' | 72"W x 29"H x 29.75"D | View Online Template | 2 lbs. |
| 8' | 96"W x 29"H x 29.75"D | View Online Template | 2.5 lbs. |

Production Lead Time: 2 days from final proof approval



Full-Color Front Only

- Graphic can range in complexity from a simple one-color design to a detailed full-color design
- Vector art preferred
- Available in stock fabric colors only
- Artwork is printed on front only
- Maximum artwork size requirements apply
- Fold and store in included poly bag



Full-Color Full-Bleed

- Ideal for complex designs, photographic images, or art with gradients
- Vector and raster art accepted
- Art is dye sublimated on white fabric only
- Full-color artwork can be printed across the entire throw
- No artwork size restrictions
- Fold and store in included poly bag

Stock Table Throw Colors

| | |
|----------------------|--------------------|
| Black | Navy Blue PMS 2767 |
| Blueberry PMS 647 | Orange PMS 1505 |
| Brown PMS 476 | Purple PMS Violet |
| Burgundy PMS 504 | Red PMS 201 |
| Charcoal PMS 425 | Royal Blue PMS 661 |
| Gray PMS 422 | White |
| Hunter Green PMS 350 | Yellow PMS 1235 |
| Lime Green PMS 375 | |

PMS colors are for reference only and may vary slightly from actual color.

Setup fee: \$20.00(G); no setup fee on orders placed via our website. View current graphic templates, assembly videos and instructions on our website.

STANDARD TABLE THROW

Our most popular and best-selling table throw is elegant in its simplicity.

- Covers four sides of the table, viewable from all sides
- Offers a large maximum imprint area for more graphic coverage on full-color front only throws
- Draped corners
- Polyester poplin
- Machine-washable and wrinkle-resistant
- Flame retardant treated (FR rated for exhibit halls)



Keep your supplies and accessories out of sight.

Full-Color Front Only

| Item # | Description | 1 | 2-5 | 6-11 | 12-24 |
|--------|-------------------|--------|--------|--------|--------|
| 109105 | 4' Standard Throw | 140.00 | 121.80 | 114.80 | 105.00 |
| 109002 | 6' Standard Throw | 202.00 | 175.70 | 165.60 | 151.50 |
| 109014 | 8' Standard Throw | 222.00 | 193.10 | 182.00 | 166.50 |

Stock fabric colors with full-color artwork printed on front. Artwork cannot exceed maximum size requirements.

| Description | Table Size | Front Only Graphic Size | Product Wt. |
|-------------|-----------------------|-------------------------|-------------|
| 4' | 48"W x 29"H x 29.75"D | 40"W x 25"H | 1.5 lbs. |
| 6' | 72"W x 29"H x 29.75"D | 64"W x 25"H | 2.5 lbs. |
| 8' | 96"W x 29"H x 29.75"D | 64"W x 25"H | 3 lbs. |

Production Lead Time: 2 days from final proof approval

Full-Color Full-Bleed

| Item # | Description | 1 | 2-5 | 6-11 | 12-24 |
|--------|-------------------|--------|--------|--------|--------|
| 109106 | 4' Standard Throw | 144.20 | 131.20 | 125.50 | 118.20 |
| 109010 | 6' Standard Throw | 208.10 | 189.40 | 181.00 | 170.60 |
| 109022 | 8' Standard Throw | 228.70 | 208.10 | 199.00 | 187.50 |

White fabric fully dye sublimated with full-color artwork.

| Description | Table Size | Full-Bleed Graphic Size | Product Wt. |
|-------------|-----------------------|-------------------------|-------------|
| 4' | 48"W x 29"H x 29.75"D | View Online Template | 1.5 lbs. |
| 6' | 72"W x 29"H x 29.75"D | View Online Template | 2.5 lbs. |
| 8' | 96"W x 29"H x 29.75"D | View Online Template | 3 lbs. |

Production Lead Time: 2 days from final proof approval

Add-On

Table Throw Messenger Bag



Table Throw Messenger Bag

| Item # | 1 | 2-5 | 6-11 | 12-24 |
|--------|-------|-------|-------|-------|
| 220107 | 33.60 | 32.93 | 31.92 | 31.25 |

Hardware Lead Time: Ships same day when ordered before 2 pm Central



8' with full-color full-bleed transforms into a 6' fitted

CONVERTIBLE TABLE THROW

This throw is easily convertible so it fits both 8' and 6' table sizes.

- Offers a large maximum imprint area for more graphic coverage on full-color front only throws
- Hook-and-loop fasteners make size conversion quick and easy
- Covers four sides of the table
- Polyester poplin
- Machine-washable and wrinkle-resistant
- Flame retardant treated (FR rated for exhibit halls)



Full-Color Front Only

| Item # | Description | 1 | 2-5 | 6-11 | 12-24 |
|--------|-------------------------|--------|--------|--------|--------|
| 104014 | 6'/8' Convertible Throw | 255.00 | 221.75 | 209.00 | 191.25 |

Stock fabric colors with full-color artwork printed on front. Artwork cannot exceed maximum size requirements.

Full-Color Full-Bleed

| Item # | Description | 1 | 2-5 | 6-11 | 12-24 |
|--------|-------------------------|--------|--------|--------|--------|
| 104022 | 6'/8' Convertible Throw | 262.75 | 228.50 | 215.50 | 197.00 |

White fabric fully dye sublimated with full-color artwork.

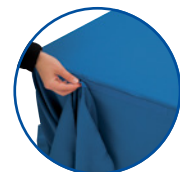
| Description | Table Size | Front Only Graphic Size | Full-Bleed Graphic Size | Product Wt. |
|-------------|---------------------------|-------------------------|-------------------------|-------------|
| 6'/8' | 72"/96"W x 29"H x 29.75"D | 64"W x 25"H | View Online Template | 3 lbs. |

Production Lead Time: 2 days from final proof approval

Converts from 8' to 6' and Back Again!



1. Grab the back corner of the table throw.



2. Attach the corner to the back of the throw using the built-in hook-and-loop fasteners.

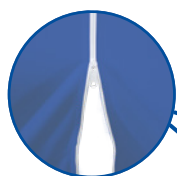


3. Grab the front corner of the throw and fold it tightly around the back corner of the table.

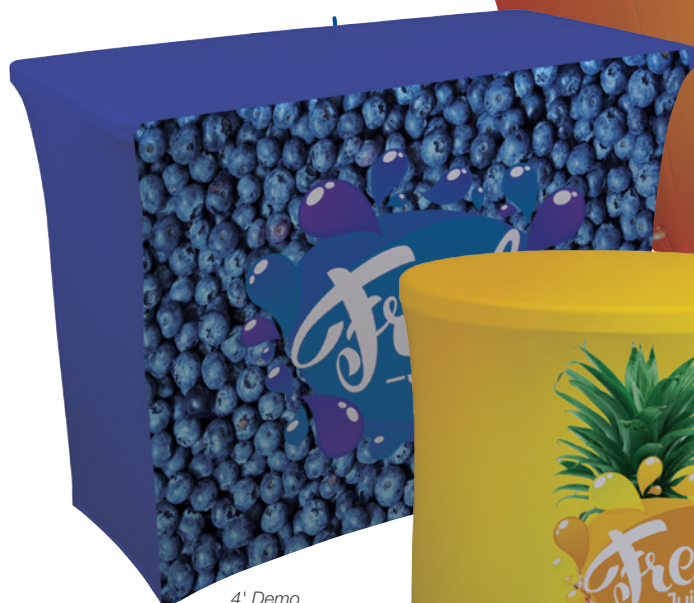


4. Secure it in place with the built-in hook-and-loop fasteners.

TABLE COVERS



Demo and Classic feature a zippered back for an enclosed storage area.



4' Demo



31.5" Bar-height with seam in back



6' Classic



Table leg slips into the sleeve to pull the throw taut.

ULTRAFIT TABLE THROW

This form-fitting throw is an attractive option for promoting your brand. It stretches to fit tightly around tables, creating a crisp, refined appearance.

- Artwork is dye sublimated on two-way stretch fabric
- Machine-washable and wrinkle-resistant
- Flame retardant treated (FR rated for exhibit halls)



UltraFit Table Throw

| Item # | Description | 1 | 2-5 | 6-11 | 12-24 |
|--------|--|--------|--------|--------|--------|
| 114012 | 31.5" Bar-Height Full-Color Full-Bleed | 355.00 | 323.00 | 308.75 | 291.00 |
| 114100 | 4' Demo Full-Color Full-Bleed | 390.00 | 355.00 | 339.25 | 319.75 |
| 114002 | 6' Classic Full-Color Full-Bleed | 460.00 | 418.50 | 400.25 | 377.25 |
| 114005 | 8' Classic Full-Color Full-Bleed | 510.00 | 464.00 | 443.50 | 418.00 |

White fabric fully dye sublimated with full-color artwork

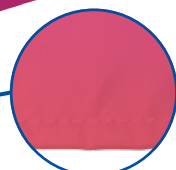
USD MSRP (C)

| Description | Table Size | Full-Bleed Graphic Size | Product Wt. |
|------------------|-----------------------|-------------------------|-------------|
| 31.5" Bar-Height | 43"H x 31.5"D | View Online Template | 1.75 lbs. |
| 4' Demo | 47.75"W x 36"H x 24"D | View Online Template | 2 lbs. |
| 6' Classic | 72"W x 29"H x 29.75"D | View Online Template | 2.5 lbs. |
| 8' Classic | 96"W x 29"H x 29.75"D | View Online Template | 3 lbs. |

Production Lead Time: 3 days from final proof approval



6'



Finished with a hemmed edge.

PREMIUM TABLE THROW

Premium throws are perfect for showcasing eye-catching, full-color imagery with an upscale look.

- Covers four sides of the table
- Draped corners
- Nearly-opaque material
- Artwork is dye sublimated on two-way stretch fabric
- Machine-washable
- Flame retardant treated (FR rated for exhibit halls)



Full-Color Full-Bleed

| Item # | Description | 1 | 2-5 | 6-11 | 12-24 |
|--------|------------------|--------|--------|--------|--------|
| 109070 | 6' Premium Throw | 450.00 | 409.50 | 391.50 | 369.00 |
| 109071 | 8' Premium Throw | 475.00 | 432.25 | 413.25 | 389.50 |

White fabric fully dye sublimated with full-color artwork.

USD MSRP (C)

| Description | Table Size | Full-Bleed Graphic Size | Product Wt. |
|-------------|-----------------------|-------------------------|-------------|
| 6' | 72"W x 29"H x 29.75"D | View Online Template | 3.5 lbs. |
| 8' | 96"W x 29"H x 29.75"D | View Online Template | 4.75 lbs. |

Production Lead Time: 2 days from final proof approval

Setup fee: \$20.00(G); no setup fee on orders placed via our website. View current graphic templates, assembly videos and instructions on our website.

STANDARD TABLE RUNNER

This stylish runner lets you add a logo or design to any table.

- Offers a large maximum imprint area for more graphic coverage for even more ad space on full-color front only runners
- Available in two widths
- Polyester poplin
- Machine-washable and wrinkle-resistant
- Flame retardant treated (FR rated for exhibit halls)
- Table throw sold separately



57" with full-color front only

28" with full-color full-bleed

Full-Color Front Only

| Item # | Description | 1 | 2-5 | 6-11 | 12-24 |
|--------|---------------------|--------|--------|--------|--------|
| 102002 | 28" Standard Runner | 131.00 | 119.20 | 110.00 | 99.60 |
| 102014 | 57" Standard Runner | 162.00 | 147.40 | 136.10 | 123.10 |

Stock fabric colors with full-color artwork printed on front.
Artwork cannot exceed maximum size requirements.

Full-Color Full-Bleed

| Item # | Description | 1 | 2-5 | 6-11 | 12-24 |
|--------|---------------------|--------|--------|--------|--------|
| 102010 | 28" Standard Runner | 190.00 | 172.90 | 159.60 | 144.40 |
| 102022 | 57" Standard Runner | 220.00 | 200.20 | 184.80 | 167.20 |

White fabric fully dye sublimated with full-color artwork.

| Description | Finished Size | Front Only Graphic Size | Dye Sub Graphic Size | Product Wt. |
|-------------|---------------|-------------------------|----------------------|-------------|
| 28" | 28"W x 80"D | 24"W x 25"H | View Online Template | 0.5 lb. |
| 57" | 57"W x 80"D | 50"W x 25"H | View Online Template | 1 lb. |

Production Lead Time: 2 days from final proof approval

Stock Standard Runner Colors

| | | | |
|----------------------|--------------------|-------------------|--------------------|
| Black | Navy Blue PMS 2767 | Blueberry PMS 647 | Purple PMS Violet |
| Brown PMS 476 | Red PMS 201 | Burgundy PMS 504 | Royal Blue PMS 661 |
| Charcoal PMS 425 | White | Gray PMS 422 | Yellow PMS 1235 |
| Hunter Green PMS 350 | | | |

PMS colors are for reference only and may vary slightly from actual color.

LAZERLINE THROW

These cost-effective throws are laser-cut for a crisp finished edge.

- Now available in full-color full-bleed
- Heat-treated edges will not fray or unravel
- Polyester poplin
- Machine-washable and wrinkle-resistant
- Flame retardant treated (FR rated for exhibit halls)



Laser-cut edges for a clean look.

6' with full-color full-bleed

Full-Color Front Only

| Item # | Description | 1 | 2-5 | 6-11 | 12-24 |
|--------|----------------------------|--------|--------|--------|--------|
| 108213 | 6' LazerLine 3-Sided Throw | 164.00 | 142.70 | 134.50 | 123.00 |
| 108214 | 8' LazerLine 3-Sided Throw | 182.00 | 158.30 | 149.20 | 136.50 |
| 108201 | 6' LazerLine 4-Sided Throw | 182.00 | 158.30 | 149.20 | 136.50 |
| 108202 | 8' LazerLine 4-Sided Throw | 200.00 | 174.00 | 164.00 | 150.00 |

Stock fabric colors with full-color artwork printed on front.
Artwork cannot exceed maximum size requirements.

| Description | Table Size | Front Only Graphic Size | Product Wt. (3-Sided / 4-Sided) |
|-------------|-----------------------|-------------------------|---------------------------------|
| 6' | 72"W x 29"H x 29.75"D | 64"W x 25"H | 2 lbs. / 2.5 lbs. |
| 8' | 96"W x 29"H x 29.75"D | 64"W x 25"H | 2.5 lbs. / 3 lbs. |

Full-Color Full-Bleed

| Item # | Description | 1 | 2-5 | 6-11 | 12-24 |
|--------|----------------------------|--------|--------|--------|--------|
| 108216 | 6' LazerLine 3-Sided Throw | 164.00 | 142.70 | 134.50 | 123.00 |
| 108217 | 8' LazerLine 3-Sided Throw | 182.00 | 158.30 | 149.20 | 136.50 |
| 108204 | 6' LazerLine 4-Sided Throw | 182.00 | 158.30 | 149.20 | 136.50 |
| 108205 | 8' LazerLine 4-Sided Throw | 200.00 | 174.00 | 164.00 | 150.00 |

White fabric fully dye sublimated with full-color artwork.

| Description | Finished Size | Full-Bleed Graphic Size | Product Wt. (3-Sided / 4-Sided) |
|-------------|-----------------------|-------------------------|---------------------------------|
| 6' | 72"W x 29"H x 29.75"D | View Online Template | 2 lbs. / 2.5 lbs. |
| 8' | 96"W x 29"H x 29.75"D | View Online Template | 2.5 lbs. / 3 lbs. |

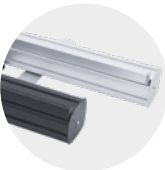
Production Lead Time: 2 days from final proof approval

Stock Throw Colors

| | | | |
|----------------------|------------------|--------------------|--------------------|
| Black | Gray PMS 422 | Purple PMS Violet | Blueberry PMS 647 |
| Hunter Green PMS 350 | Red PMS 201 | Brown PMS 476 | Lime Green PMS 375 |
| Royal Blue PMS 661 | Burgundy PMS 504 | Navy Blue PMS 2767 | Yellow PMS 1235 |
| Charcoal PMS 425 | Orange PMS 1505 | White | |

PMS colors are for reference only and may vary slightly from actual color.

RETRACTABLE BANNERS



Hardware available in silver or black.



Two swivel feet for stability.



Banner rail easily attaches to the top of the pole for quick setup.

ECONOMY RETRACTOR

The popular Economy Retractor is versatile and budget-friendly, making it a great option for the cost-conscious marketer.

- Lightweight aluminum base
- Banner available in Titan™ no-curl hybrid media or Titan™ no-curl opaque fabric
- Additional sizes and media option available online

1 YEAR
HARDWARE
WARRANTY

100
RCAT
RATING

Economy Retractor

| Item # | Description | 1 | 2-5 | 6-11 | 12-24 |
|--------|---------------------------------|--------|--------|--------|--------|
| 261134 | 31.5" No-Curl Hybrid Media Kit | 228.10 | 214.40 | 205.30 | 191.60 |
| 262162 | 31.5" No-Curl Opaque Fabric Kit | 228.10 | 214.40 | 205.30 | 191.60 |
| 261136 | 33.5" No-Curl Hybrid Media Kit | 236.40 | 222.20 | 212.80 | 198.60 |
| 262163 | 33.5" No-Curl Opaque Fabric Kit | 236.40 | 222.20 | 212.80 | 198.60 |
| 261138 | 36" No-Curl Hybrid Media Kit | 264.00 | 248.00 | 237.50 | 221.75 |
| 262164 | 36" No-Curl Opaque Fabric Kit | 264.00 | 248.00 | 237.50 | 221.75 |

Kit Includes: Hardware, Installed Banner and Soft Carry Case

USD MSRP (C)

| Description | Product Size | Finished Graphic Size | Product Wt. |
|-------------|------------------------|-----------------------|-------------|
| 31.5" | 32"W x 83.5"H x 15"D | 31.5"W x 78.5"H | 7 lbs. |
| 33.5" | 34"W x 83.5"H x 15"D | 33.5"W x 78.5"H | 7.25 lbs. |
| 36" | 36.5"W x 83.5"H x 15"D | 36"W x 78.5"H | 8.5 lbs. |

Production Lead Time: 2 days from final proof approval

Add-On



Ultimate LED Single Light Kit

| Item # | Description | 1 | 2-5 | 6-11 | 12-24 |
|--------|-------------|--------|--------|--------|--------|
| 150120 | Kit | 144.00 | 139.70 | 135.40 | 131.00 |

USD MSRP (C)

Hardware Lead Time: Ships same day when ordered before 2 pm Central



Dry-erase media lets you write out your message and wipe it away (markers not included).

ECONOMY PLUS RETRACTOR

This display is as reliable as the popular Economy Retractor, but it includes some great additional features, like improved durability.

- Available in two widths
- Single-footed design keeps the retractor stable while maintaining a low profile
- Flip-lever telescoping pole makes setup and adjustment simple
- Banner available in Titan™ no-curl hybrid media or dry-erase media

2 YEAR
HARDWARE
WARRANTY

150
RCAT
RATING

Economy Plus Retractor

| Item # | Description | 1 | 2-5 | 6-11 | 12-24 |
|--------|--------------------------------|--------|--------|--------|--------|
| 261012 | 31.5" No-Curl Hybrid Media Kit | 258.75 | 243.25 | 232.75 | 217.25 |
| 262191 | 31.5" Dry-Erase Media Kit | 258.75 | 243.25 | 232.75 | 217.25 |
| 261002 | 33.5" No-Curl Hybrid Media Kit | 272.50 | 256.25 | 245.25 | 229.00 |
| 262192 | 33.5" Dry-Erase Media Kit | 272.50 | 256.25 | 245.25 | 229.00 |

Kit Includes: Hardware, Installed Banner and Soft Carry Case

USD MSRP (C)

| Description | Product Size | Finished Graphic Size | Product Wt. |
|-------------|--------------------------|-----------------------|-------------|
| 31.5" | 32"W x 62"-82.5"H x 15"D | 31.5"W x 58"-78.5"H | 7 lbs. |
| 33.5" | 34"W x 62"-82.5"H x 15"D | 33.5"W x 58"-78.5"H | 7.5 lbs. |

Production Lead Time: 2 days from final proof approval



Banner rail easily attaches to the top of the pole for quick setup.



Hook-and-loop fasteners make banner easy to swap out.

Setup fee: \$20.00(G); no setup fee on orders placed via our website. View current graphic templates, assembly videos and instructions on our website.

IDEAL RETRACTOR

The Ideal Retractor is designed from the ground up to be a quick, simple solution for short-term promotional applications.

- Lightweight, portable base
- Three-section shock cord pole
- Artwork is printed on tear-resistant Titan™ polypropylene media
- Banner is printed single-sided; double-sided option includes two banners

2 MO.
HARDWARE
WARRANTY

25
RCAT
RATING

Ideal Retractor

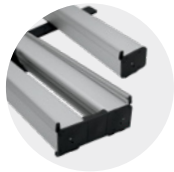
| Item # | Description | 1 | 2-5 | 6-11 | 12-24 |
|---|-------------------------|--------------|--------|--------|--------|
| 261150 | 31.5" Single Banner Kit | 107.10 | 100.70 | 96.40 | 90.00 |
| 261156 | 31.5" Double Banner Kit | 215.90 | 212.10 | 193.30 | 189.50 |
| 261153 | 33.5" Single Banner Kit | 117.60 | 110.50 | 105.80 | 98.70 |
| 261158 | 33.5" Double Banner Kit | 235.70 | 231.70 | 211.00 | 207.00 |
| Kit Includes: Hardware, Installed Banner(s) and Soft Carry Case | | USD MSRP (C) | | | |

| Description | Product Size (Single / Double) | Finished Graphic Size | Product Wt. (Single / Double) |
|-------------|-----------------------------------|-----------------------|-------------------------------|
| 31.5" | 32.25"W x 82.25"H x 10.25"D / 8"D | 31.25"W x 79.5"H | 4.6 lbs. / 9.25 lbs. |
| 33.5" | 34.25"W x 82.25"H x 10.25"D / 8"D | 33.25"W x 79.5"H | 5 lbs. / 9.5 lbs. |

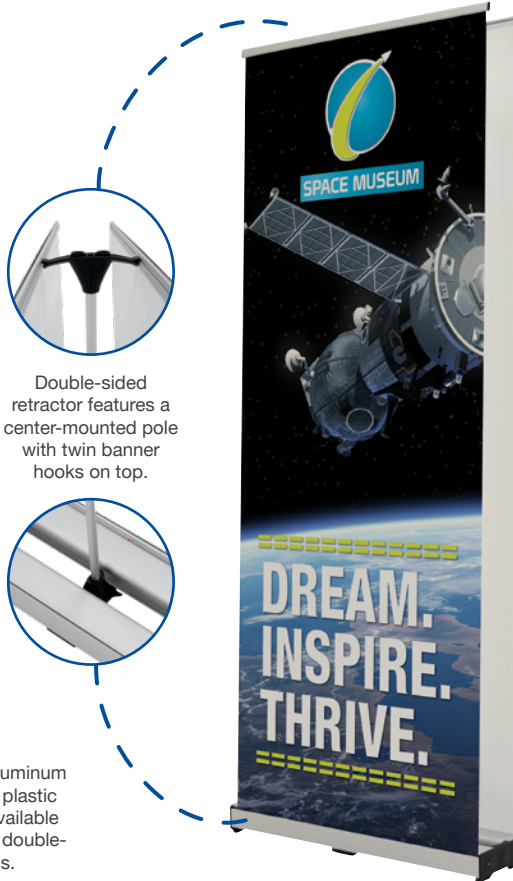
Production Lead Time: 1 day from final proof approval



Shock cord pole makes setup and teardown easy.



Lightweight aluminum base features plastic ends and is available in single- and double-banner options.



31.5" double



33.5" single

VALUE RETRACTOR

The Value Retractor is a cost-conscious option for your portable signage needs.

- Artwork is printed on tear-resistant Titan™ polypropylene media
- Two swivel feet for stability
- Available in three widths
- Additional media option available online

6 MO.
HARDWARE
WARRANTY

50
RCAT
RATING

Value Retractor

| Item # | Description | 1 | 2-5 | 6-11 | 12-24 |
|--|-------------------------------|--------------|--------|--------|--------|
| 262240 | 31.5" Polypropylene Media Kit | 142.10 | 133.50 | 127.90 | 119.30 |
| 262243 | 33.5" Polypropylene Media Kit | 149.20 | 140.20 | 134.30 | 125.30 |
| 262246 | 36" Polypropylene Media Kit | 151.10 | 142.00 | 136.00 | 126.90 |
| Kit Includes: Hardware, Installed Banner and Soft Carry Case | | USD MSRP (C) | | | |

| Description | Product Size | Finished Graphic Size | Product Wt. |
|-------------|-----------------------|-----------------------|-------------|
| 31.5" | 34"W x 82"H x 15"D | 31.5"W x 79.5"H | 7 lbs. |
| 33.5" | 35.75"W x 82"H x 15"D | 33.5"W x 79.5"H | 7.25 lbs. |
| 36" | 38.5"W x 82"H x 15"D | 36"W x 79.5"H | 7.6 lbs. |

Production Lead Time: 2 days from final proof approval



Shock cord pole makes setup and teardown easy.



Lightweight aluminum base with plastic ends.



31.5"



33.5"



36"

Setup fee: \$20.00(G); no setup fee on orders placed via our website. View current graphic templates, assembly videos and instructions on our website.

RETRACTABLE BANNERS



Dry-erase media lets you write out your message and wipe it away (markers not included).

DELUXE PRO RETRACTOR

The Deluxe Pro Retractor features a rounded base with durable aluminum end caps, and swapping out graphics is a breeze with the hook-and-loop banner system.

- Banner available in Titan™ no-curl opaque fabric or dry-erase media
- Banner is printed single-sided; double-sided option includes two banners

2 YEAR
HARDWARE
WARRANTY

200
RCAT
RATING

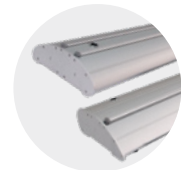
Deluxe Pro Retractor

| Item # | Description | 1 | 2-5 | 6-11 | 12-24 |
|---|---|-----------------------|-------------------------------|--------------|--------|
| 262250 | 33.5" Single No-Curl Opaque Fabric Kit | 281.75 | 265.00 | 253.75 | 236.75 |
| 262251 | 33.5" Double No-Curl Opaque Fabric Kit | 425.75 | 415.00 | 381.75 | 371.00 |
| 262202 | 33.5" Single Dry-Erase Media Kit | 281.75 | 265.00 | 253.75 | 236.75 |
| 262203 | 33.5" Double Dry-Erase Media Kit | 425.75 | 415.00 | 381.75 | 371.00 |
| 262254 | 46.5" Single No-Curl Opaque Fabric Kit | 377.75 | 355.00 | 340.00 | 317.25 |
| 262255 | 46.5" Double No-Curl Opaque Fabric Kit | 557.00 | 542.00 | 499.50 | 484.50 |
| 262204 | 46.5" Single Dry-Erase Media Kit | 377.75 | 355.00 | 340.00 | 317.25 |
| 262205 | 46.5" Double Dry-Erase Media Kit | 557.00 | 542.00 | 499.50 | 484.50 |
| Kit Includes: Hardware, Installed Banner(s) and Soft Carry Case | | | | USD MSRP (C) | |
| Description | Product Size (Single / Double) | Finished Graphic Size | Product Wt. (Single / Double) | | |
| 33.5" | 34.75"W x 65.25"-83.25"H x 8.5"D / 9.25"D | 33.5"W x 61.5"-79.5"H | 12.25 lbs. / 16 lbs. | | |
| 46.5" | 48.5"W x 65.25"-83.25"H x 8.5"D / 9.25"D | 46.5"W x 61.5"-79.5"H | 16.75 lbs. / 22.5 lbs. | | |

Production Lead Time: 1 day for no-curl opaque fabric / 2 days for dry-erase media from final proof approval



Hook-and-loop fasteners make banners easy to swap out.



Streamlined base is available in single- and double-banner options.



STRATUS RETRACTOR

The Stratus Retractor's streamlined base features a low center of gravity to keep it stable, eliminating the need for fold-out feet.

- Durable, lightweight construction
- Banner available in Titan™ no-curl hybrid media or Titan™ no-curl opaque fabric
- Additional sizes and media option available online

2 YEAR
HARDWARE
WARRANTY

200
RCAT
RATING

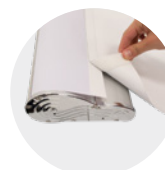
Stratus Retractor

| Item # | Description | 1 | 2-5 | 6-11 | 12-24 |
|--|----------------------------------|-------------------------|-------------|--------------|--------|
| 262072 | 31.5" No-Curl Hybrid Media Kit | 276.50 | 260.00 | 249.00 | 232.25 |
| 262151 | 31.5" No-Curl Opaque Fabric Kit | 276.50 | 260.00 | 249.00 | 232.25 |
| 262074 | 33.5" No-Curl Hybrid Media Kit | 287.00 | 269.75 | 258.50 | 241.25 |
| 262152 | 33.5" No-Curl Opaque Fabric Kit | 287.00 | 269.75 | 258.50 | 241.25 |
| 262076 | 36" No-Curl Hybrid Media Kit | 305.75 | 287.25 | 275.00 | 256.75 |
| 262153 | 36" No-Curl Opaque Fabric Kit | 305.75 | 287.25 | 275.00 | 256.75 |
| Kit Includes: Hardware, Installed Banner and Soft Carry Case | | | | USD MSRP (C) | |
| Description | Product Size | Finished Graphic Size | Product Wt. | | |
| 31.5" | 33"W x 67.5"-81.625"H x 7.125"D | 31.5"W x 64.375"-78.5"H | 11.25 lbs. | | |
| 33.5" | 34.25"W x 67.5"-81.75"H x 7.25"D | 33.5"W x 64.375"-78.5"H | 12 lbs. | | |
| 36" | 37.25"W x 67.5"-81.75"H x 7.25"D | 36"W x 64.375"-78.5"H | 12.5 lbs. | | |

Production Lead Time: 2 days from final proof approval



Aluminum base features chrome end caps and has a low center of gravity.



Hook-and-loop fasteners make banner easy to swap out.



Shock cord pole with telescoping flip-lever extension makes setup and adjustment simple.

Setup fee: \$20.00(G); no setup fee on orders placed via our website. View current graphic templates, assembly videos and instructions on our website.

SPOTLIGHT RETRACTOR

Illuminate the possibilities at your next event with this lit retractor.

- Has the look of a light box with the portability, convenience and easy set up of a retractable banner
- Artwork is printed on flexible backlit film
- Light is radiated from the base by LED lights
- Kit includes two single-sided banners
- Illuminate up to three units via a single power source with the included connector cords
- On/off switch for the lights is located on the side of the base
- UL/CE certified
- US Patent #201920486314.5



LIGHTS UP!



Spotlight Retractor

| Item # | Description | 1 | 2-5 | 6-11 | 12-24 |
|---|-------------|------------------------------|--------------------|--------|--------|
| 261304 | Kit | 561.00 | 527.50 | 505.00 | 471.00 |
| Kit Includes: Hardware, 2 Installed Banners and Soft Carry Case | | USD MSRP (C) | | | |
| Product Size | | Finished Graphic Size | Product Wt. | | |
| 34"W x 84"H x 10.25"D | | 31.25"W x 78.5"H | 22 lbs. | | |

Production Lead Time: 2 days from final proof approval



Connector cord can be used to link retractors together.



LED lights integrated into the base provide illumination.



Hardware holds two banners for a double-sided display.



Shock cord pole makes setup and teardown easy.

JUMBO WIDE RETRACTOR

Create an impressive backdrop with this ultra-wide retractable banner.

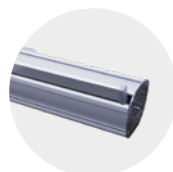
- High-tension base springs keep the banner taut
- Double-footed design for stability
- Banner available in Titan™ no-curl fabric or Titan™ 13 oz. smooth scrim vinyl
- Available in three widths



Jumbo Wide Retractor

| Item # | Description | 1 | 2-5 | 6-11 | 12-24 |
|--|----------------------------------|-------------------------|------------------------------|-------------------------------------|--------|
| 262138 | 5' No-Curl Fabric Kit | 560.50 | 526.50 | 504.50 | 470.50 |
| 261080 | 5' 13 oz. Smooth Scrim Vinyl Kit | 560.50 | 526.50 | 504.50 | 470.50 |
| 262139 | 6' No-Curl Fabric Kit | 677.50 | 637.00 | 610.00 | 569.00 |
| 261082 | 6' 13 oz. Smooth Scrim Vinyl Kit | 677.50 | 637.00 | 610.00 | 569.00 |
| 262140 | 8' No-Curl Fabric Kit | 791.50 | 744.00 | 712.50 | 665.00 |
| 261018 | 8' 13 oz. Smooth Scrim Vinyl Kit | 791.50 | 744.00 | 712.50 | 665.00 |
| Kit Includes: Hardware, Installed Banner and Soft Carry Case | | USD MSRP (C) | | | |
| Description | | Product Size | Finished Graphic Size | Product Wt. (Fabric / Vinyl) | |
| 5' | | 60.5"W x 83"H x 15.75"D | 59.75"W x 78.75"H | 18.85 lbs. / 20.75 lbs. | |
| 6' | | 72.5"W x 83"H x 15.75"D | 71.75"W x 78.75"H | 21.35 lbs. / 23.5 lbs. | |
| 8' | | 95.5"W x 83"H x 15.75"D | 94.75"W x 78.75"H | 26.35 lbs. / 29.5 lbs. | |

Production Lead Time: 2 days for 13 oz. smooth scrim vinyl / 4 days for no-curl fabric from final proof approval



Hardware comes in silver.

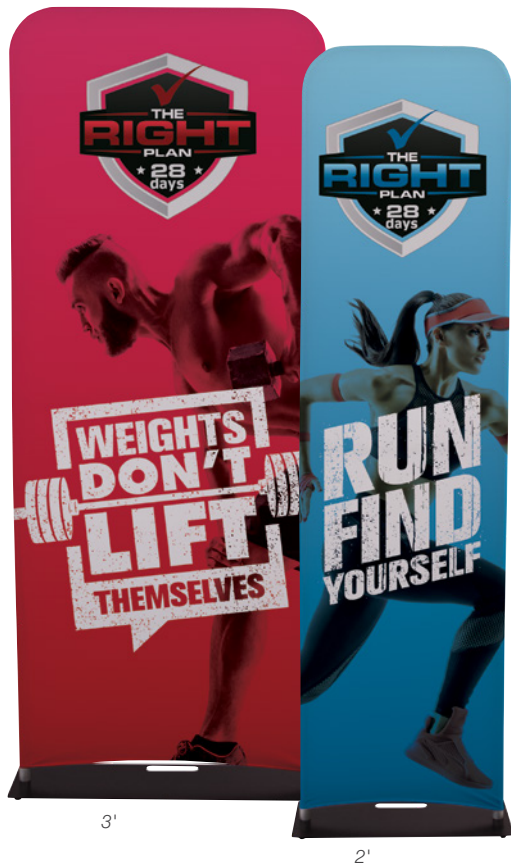


Two shock cord poles support the banner.



Setup fee: \$20.00(G); no setup fee on orders placed via our website. View current graphic templates, assembly videos and instructions on our website.

BANNER DISPLAYS



EUROFIT BANNER DISPLAY

A fabric graphic cover slides over a tubed frame, letting you create amazing backdrops or portable privacy walls.

- Multiple sizes can be arranged together for endless display possibilities
- Artwork is dye sublimated on polyester knit
- Double-sided graphic cover is viewable from both the front and back of the display
- Steel base with a black, powder-coated finish
- Not compatible with the EuroFit Connector or EuroFit Cascade Merchandiser kits



EuroFit Banner Display

| Item # | Description | 1 | 2-5 | 6-11 | 12-24 |
|---|-----------------------|-----------------------|-------------|----------------|--------|
| 255110 | 2' Kit | 225.00 | 218.00 | 212.00 | 205.00 |
| 255113 | 3' Kit | 309.00 | 300.00 | 290.00 | 281.00 |
| Kit Includes: Hardware, Graphic Cover and Soft Carry Case | | USD MSRP (C) | | | |
| Description | Product Size | Finished Graphic Size | Product Wt. | Media | |
| 2' | 25.75"W x 91"H x 10"D | View Online Template | 15.5 lbs. | Polyester Knit | |
| 3' | 37.75"W x 91"H x 10"D | View Online Template | 20.5 lbs. | Polyester Knit | |

Production Lead Time: 4 days from final proof approval

Ultimate LED Light Kit and EuroFit Light Clamp

Add an Ultimate LED Light Kit to your display using the EuroFit Light Clamp (sold separately). For use on horizontal tubing only.

| Item # | Description | 1 | 2-5 | 6-11 | 12-24 |
|---|-------------------------------|--------------|--------|--------|--------|
| 150120 | Ultimate LED Single Light Kit | 144.00 | 139.70 | 135.40 | 131.00 |
| Kit Includes: Light, Clamp, Clip, USB Adapter and Soft Carry Case | | USD MSRP (C) | | | |
| 255125 | EuroFit Light Clamp | 5.40 | 5.20 | 5.10 | 4.90 |
| | | USD MSRP (C) | | | |

Hardware Lead Time: Ships same day when ordered before 2 pm Central



FRAMEWORX BANNER DISPLAY

These lightweight displays feature a contemporary design that brings new life to your exhibit.

- Banners attach using low-profile clear grommets
- Face cutout hole locations are standard and cannot be customized
- Additional sizes and media options available online



3' FrameWorx Banner Display

| Item # | Description | 1 | 2-5 | 6-11 | 12-24 |
|--|--|--------------|--------|--------|--------|
| 263061 | 13 oz. Smooth Scrim Vinyl Single-Sided Kit | 142.30 | 136.60 | 132.40 | 125.30 |
| 263062 | 13 oz. Smooth Scrim Vinyl Double-Sided Kit | 170.30 | 163.50 | 158.40 | 149.90 |
| Kit Includes: Silver or Black Hardware, Banner and Soft Carry Case | | USD MSRP (C) | | | |
| Product Size | Finished Graphic Size | Product Wt. | | | |
| 36.75"W x 74"H x 15.5"D | View Online Template | 5.6 lbs. | | | |

8.5' FrameWorx Banner Display

| Item # | Description | 1 | 2-5 | 6-11 | 12-24 |
|--|--------------------------|--------------|--------|--------|--------|
| 263328 | 400 Denier Polyester Kit | 375.00 | 360.00 | 348.75 | 330.00 |
| Kit Includes: Black Hardware, Banner and Soft Carry Case | | USD MSRP (C) | | | |
| Product Size | Finished Graphic Size | Product Wt. | | | |
| 101.75"W x 90.5"H x 15.5"D | View Online Template | 15 lbs. | | | |

10.5' FrameWorx Banner Display

| Item # | Description | 1 | 2-5 | 6-11 | 12-24 |
|--|--------------------------|--------------|--------|--------|--------|
| 263331 | 400 Denier Polyester Kit | 410.00 | 393.50 | 381.25 | 360.75 |
| Kit Includes: Black Hardware, Banner and Soft Carry Case | | USD MSRP (C) | | | |
| Product Size | Finished Graphic Size | Product Wt. | | | |
| 123.25"W x 90.25"H x 15.5"D | View Online Template | 17 lbs. | | | |

3.5' FrameWorx Face Cutout

| Item # | Description | 1 | 2-5 | 6-11 | 12-24 |
|--|--|--------------|--------|--------|--------|
| 263054 | 13 oz. Smooth Scrim Vinyl Single Face Cutout Kit | 159.10 | 152.70 | 148.00 | 140.00 |
| Kit Includes: Silver or Black Hardware, Banner and Soft Carry Case | | USD MSRP (C) | | | |
| Product Size | Finished Graphic Size | Product Wt. | | | |
| 41"W x 81.75"H x 15.5"D | 27.5"W x 75"H (View Online Template) | 6.2 lbs. | | | |

Production Lead Time: 2 days for smooth scrim vinyl / 4 days for 400 denier polyester from final proof approval



Setup fee: \$20.00(G); no setup fee on orders placed via our website. View current graphic templates, assembly videos and instructions on our website.



TRI-X BANNER DISPLAY

The clean X design of this display makes it simple, durable and easy to assemble.

- Strong fiberglass arms
- Artwork is printed on Titan™ 13 oz. smooth scrim vinyl
- Banners are finished with brass grommets by default; can be customized with nickel or clear plastic grommets by request



Tri-X Banner Display

| Item # | Description | 1 | 2-5 | 6-11 | 12-24 |
|--------|-----------------|--------|--------|--------|--------|
| 263109 | 23.5" x 60" Kit | 93.00 | 89.30 | 86.50 | 81.85 |
| 263106 | 23.5" x 70" Kit | 103.00 | 98.90 | 95.80 | 90.60 |
| 263103 | 31.5" x 70" Kit | 127.00 | 121.90 | 118.10 | 111.80 |
| 263112 | 31.5" x 79" Kit | 146.00 | 140.20 | 135.80 | 128.50 |
| 263100 | 33.5" x 80" Kit | 149.00 | 143.00 | 138.60 | 131.10 |

Kit Includes: Hardware, Banner and Drawstring Case

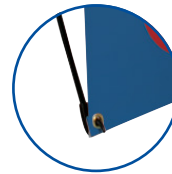
USD MSRP (C)

| Description | Product Size | Finished Graphic Size | Product Wt. | Media |
|-------------|------------------------|-----------------------|-------------|----------------------------------|
| 23.5" x 60" | 23.5"W x 60"H x 32.5"D | 23.5"W x 60"H | 2 lbs. | Titan™ 13 oz. Smooth Scrim Vinyl |
| 23.5" x 70" | 23.5"W x 70"H x 33.5"D | 23.5"W x 70"H | 2.25 lbs. | Titan™ 13 oz. Smooth Scrim Vinyl |
| 31.5" x 70" | 31.5"W x 70"H x 31.5"D | 31.5"W x 70"H | 2.25 lbs. | Titan™ 13 oz. Smooth Scrim Vinyl |
| 31.5" x 79" | 31.5"W x 79"H x 32.5"D | 31.5"W x 79"H | 3 lbs. | Titan™ 13 oz. Smooth Scrim Vinyl |
| 33.5" x 80" | 33.5"W x 80"H x 32.5"D | 33.5"W x 79"H | 3.25 lbs. | Titan™ 13 oz. Smooth Scrim Vinyl |

Production Lead Time: 2 days from final proof approval



Back leg attaches to the aluminum hub to stabilize the display.



Corner grommets attach to plastic hooks on display arms.



EVERYDAY BANNER DISPLAY

This display features a durable steel frame with a long-lasting, powder-coated finish.

- The Everyday Banner Display features pole pockets and dowels to hold the banner in place
- The Everyday Heavy-Duty Banner Display has all the same features as the Everyday Banner Display, but reinforced with a stronger, thicker frame and wider base
- The Everyday Snap Rail Banner Display replaces the dowel and pole pockets with snap rails for a clean finish
- Hex wrench included



Everyday Banner Display

| Item # | Description | 1 | 2-5 | 6-11 | 12-24 |
|--------|-------------------------|--------|--------|--------|--------|
| 210265 | Everyday Kit | 185.00 | 177.60 | 172.10 | 162.80 |
| 210226 | Everyday Heavy-Duty Kit | 219.00 | 210.20 | 203.70 | 192.70 |

Kit Includes: Hardware, 1 Banner (24"W x 72"H) and 2 Dowels (24")

USD MSRP (C)

*Dowels not included in banner only orders

| Description | Product Size | Finished Graphic Size | Product Wt. | Media |
|-------------|-------------------------|-----------------------|-------------|-------------------------|
| Everyday | 24"W x 48"-92"H x 13"D | 12"-36"W x 12"-91"H | 11 lbs. | Titan™ 11 mil Polyester |
| Heavy-Duty | 24"W x 55"-105"H x 14"D | 12"-36"W x 12"-104"H | 13.5 lbs. | Titan™ 11 mil Polyester |

Everyday Snap Rail Banner Display

| Item # | Description | 1 | 2-5 | 6-11 | 12-24 |
|--------|-------------|--------|--------|--------|--------|
| 264030 | 24" Kit | 205.00 | 196.80 | 190.70 | 180.40 |
| 264032 | 30" Kit | 215.00 | 206.40 | 200.00 | 189.20 |

24" Kit Includes: Hardware and 1 Banner (24"W x 70.5"H)

USD MSRP (C)

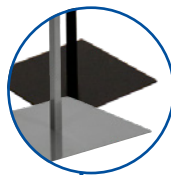
30" Kit Includes: Hardware and 1 Banner (30"W x 70.5"H)

Hardware includes 4 snap rails for single- or double-sided use

| Description | Product Size | Finished Graphic Size | Product Wt. | Media |
|-------------|---------------------------|-----------------------|-------------|-------------------------|
| 24" | 24"W x 48"-92"H x 13.25"D | 24"W x 12"-92"H | 13 lbs. | Titan™ 11 mil Polyester |
| 30" | 30"W x 48"-92"H x 13.25"D | 30"W x 12"-92"H | 14 lbs. | Titan™ 11 mil Polyester |

Production Lead Time: 2 days from final proof approval

Hardware available in silver or black (Heavy-Duty and Snap Rail hardware only available in black).



Everyday banner display with silver hardware



Everyday Heavy-Duty banner display

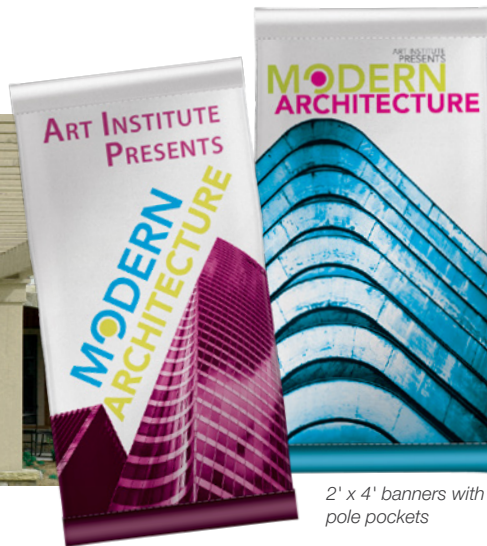


Everyday Snap Rail banner display with two banners (second banner sold separately).

BANNERS



3' x 6' banner with grommets



2' x 4' banners with pole pockets



3' x 6' banner with grommets

13 OZ. SCRIM VINYL BANNER

Versatile enough for both indoor and outdoor use, this single-sided banner is a top choice when it comes to value.

- Multiple finishing styles available

13 oz. Scrim Vinyl Banner

| Item # | Description | Product Wt. | 1-2 | 3-7 | 8-22 | 23-49 |
|--------|-------------|-------------|--------|-------|-------|-------|
| 304360 | 2' x 4' | 1 lb. | 28.24 | 25.84 | 23.28 | 21.60 |
| Item # | Description | Product Wt. | 1 | 2-3 | 4-9 | 10-22 |
| 304364 | 3' x 6' | 2.5 lbs. | 63.54 | 58.14 | 52.38 | 48.60 |
| Item # | Description | Product Wt. | 1 | 2-5 | 6-12 | 13-24 |
| 304367 | 4' x 8' | 4 lbs. | 103.36 | 93.12 | 86.40 | 77.44 |

USD MSRP (C)

Production Lead Time: 2 days from final proof approval

18 OZ. OPAQUE SCRIM VINYL BANNER

This banner is reinforced with scrim, making it extremely durable for outdoor use.

- Multiple finishing styles available

18 oz. Opaque Scrim Vinyl Banner (Single-Sided)

| Item # | Description | Product Wt. | 1 | 2-3 | 4-9 | 10-22 |
|--------|-------------|-------------|--------|--------|--------|--------|
| 304384 | 3' x 6' | 2.5 lbs. | 72.18 | 66.42 | 60.84 | 56.34 |
| Item # | Description | Product Wt. | 1 | 2-5 | 6-12 | 13-24 |
| 304387 | 4' x 8' | 4 lbs. | 118.08 | 108.16 | 100.16 | 90.56 |
| Item # | Description | Product Wt. | 1 | 2-4 | 5-9 | 10-19 |
| 304388 | 4' x 10' | 5 lbs. | 147.60 | 135.20 | 125.20 | 113.20 |

USD MSRP (C)

18 oz. Opaque Scrim Vinyl Banner (Double-Sided)

| Item # | Description | Product Wt. | 1-2 | 3-7 | 8-22 | 23-49 |
|--------|-------------|-------------|--------|--------|--------|--------|
| 304470 | 2' x 4' | 1 lb. | 68.16 | 63.92 | 59.52 | 56.00 |
| Item # | Description | Product Wt. | 1 | 2-3 | 4-9 | 10-22 |
| 304472 | 3' x 6' | 2.5 lbs. | 153.36 | 143.82 | 133.92 | 126.00 |
| Item # | Description | Product Wt. | 1 | 2-5 | 6-12 | 13-24 |
| 304474 | 4' x 8' | 4 lbs. | 255.68 | 238.08 | 224.00 | 207.04 |

USD MSRP (C)

Production Lead Time: 2 days from final proof approval

9 OZ. MESH VINYL BANNER

This single-sided banner is made of breathable 60/40 mesh vinyl that excels on breezy days.

- Multiple finishing styles available

9 oz. Mesh Vinyl Banner

| Item # | Description | Product Wt. | 1 | 2-4 | 5-14 | 15-33 |
|--------|-------------|-------------|--------|--------|--------|-------|
| 304411 | 2' x 6' | 1.25 lbs. | 48.12 | 44.40 | 40.56 | 37.56 |
| Item # | Description | Product Wt. | 1 | 2-3 | 4-9 | 10-22 |
| 304414 | 3' x 6' | 2 lbs. | 72.18 | 66.60 | 60.84 | 56.34 |
| Item # | Description | Product Wt. | 1 | 2-5 | 6-12 | 13-24 |
| 304417 | 4' x 8' | 3 lbs. | 118.40 | 108.16 | 100.16 | 90.56 |

USD MSRP (C)

Production Lead Time: 2 days from final proof approval

POPULAR BANNER FINISHING STYLES

Additional finishing styles available online.

Heat Weld

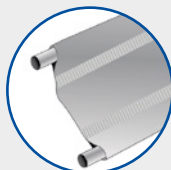
Single-sided vinyl banners only



HEM & GROMMETS



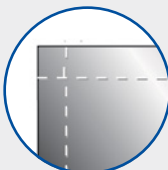
HEM, ROPE & GROMMETS



3" POLE POCKETS

Sewn

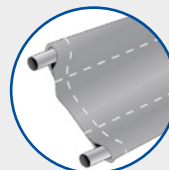
Fabric and double-sided vinyl banners



HEM ONLY



HEM & GROMMETS



3" POLE POCKETS



NEW
BUILD YOUR OWN
CUSTOM SIZES
CUSTOM FINISHING
CUSTOM QUOTES

BUILD YOUR OWN CUSTOM BANNERS

WITH OUR NEW QUICK & EASY ONLINE TOOL

Under the Banners & Flags tab, click the Build Your Own Banners option.

Setup fee: \$20.00(G); no setup fee on orders placed via our website. View current graphic templates, assembly videos and instructions on our website.

SAIL SIGNS

Sail signs are built to move in the wind, making them truly hard to miss.

- Warranty information available online

Value Teardrop Sail Sign

| Description | Item # | 1 | 2-5 | 6-11 | 12-24 | Item # | 1 | 2-5 | 6-11 | 12-24 |
|---|--------|--------|--------|--------|--------|--------|--------|--------|--------|--------------|
| 6.5' Kit with Cross Base and Water Ballast | 191611 | 151.00 | 146.50 | 138.90 | 134.40 | 191613 | 227.50 | 220.70 | 209.30 | 202.50 |
| 9.5' Kit with Cross Base and Water Ballast | 191619 | 171.80 | 166.60 | 158.00 | 152.90 | 191621 | 261.25 | 253.50 | 240.50 | 232.50 |
| 13' Kit with Cross Base and Water Ballast | 191627 | 226.40 | 219.60 | 208.30 | 201.50 | 191629 | 341.50 | 331.25 | 314.00 | 304.00 |
| Kit Includes: Hardware with Specified Base and Flag (Does not include carry case) | | | | | | | | | | USD MSRP (C) |

Kit Includes: Hardware with Specified Base and Flag (Does not include carry case)

USD MSRP (C)

Value Razor Sail Sign

| Description | Item # | 1 | 2-5 | 6-11 | 12-24 | Item # | 1 | 2-5 | 6-11 | 12-24 |
|---|--------|--------|--------|--------|--------|--------|--------|--------|--------|--------------|
| 7.5' Kit with Cross Base and Water Ballast | 191651 | 151.00 | 146.50 | 138.90 | 134.40 | 191653 | 227.50 | 220.70 | 209.30 | 202.50 |
| 10.5' Kit with Cross Base and Water Ballast | 191659 | 171.80 | 166.60 | 158.00 | 152.90 | 191661 | 261.25 | 253.50 | 240.50 | 232.50 |
| 15' Kit with Cross Base and Water Ballast | 191667 | 226.40 | 219.60 | 208.30 | 201.50 | 191669 | 341.50 | 331.25 | 314.00 | 304.00 |
| Kit Includes: Hardware with Specified Base and Flag (Does not include carry case) | | | | | | | | | | USD MSRP (C) |

Kit Includes: Hardware with Specified Base and Flag (Does not include carry case)

USD MSRP (C)

Streamline Teardrop Sail Sign

| Description | Item # | 1 | 2-5 | 6-11 | 12-24 | Item # | 1 | 2-5 | 6-11 | 12-24 |
|--|--------|--------|--------|--------|--------|--------|--------|--------|--------|--------------|
| 6' Kit with Three-Legged Base and Water Ballast | 191401 | 212.20 | 205.80 | 195.20 | 188.90 | 191409 | 293.00 | 284.25 | 269.50 | 261.00 |
| 8' Kit with Scissor Base and Water Ballast | 191403 | 268.50 | 260.50 | 247.00 | 238.75 | 191411 | 362.00 | 351.00 | 333.00 | 322.00 |
| 11.5' Kit with Scissor Base and Water Ballast | 191405 | 316.25 | 306.75 | 290.75 | 281.50 | 191413 | 449.25 | 435.75 | 413.25 | 399.75 |
| 15' Kit with Scissor Base and Water Ballast | 191407 | 373.75 | 362.50 | 343.75 | 332.50 | 191415 | 542.00 | 525.50 | 498.50 | 482.00 |
| Kit Includes: Hardware with Specified Base, Flag and Soft Carry Case | | | | | | | | | | USD MSRP (C) |

Kit Includes: Hardware with Specified Base, Flag and Soft Carry Case

USD MSRP (C)

Streamline Razor Sail Sign

| Description | Item # | 1 | 2-5 | 6-11 | 12-24 | Item # | 1 | 2-5 | 6-11 | 12-24 |
|--|--------|--------|--------|--------|--------|--------|--------|--------|--------|--------------|
| 7' Kit with Three-Legged Base and Water Ballast | 191429 | 212.20 | 205.80 | 195.20 | 188.90 | 191437 | 293.00 | 284.25 | 269.50 | 261.00 |
| 9' Kit with Scissor Base and Water Ballast | 191431 | 268.50 | 260.50 | 247.00 | 238.75 | 191439 | 362.00 | 351.00 | 333.00 | 322.00 |
| 13' Kit with Scissor Base and Water Ballast | 191433 | 316.25 | 306.75 | 290.75 | 281.50 | 191441 | 449.25 | 435.75 | 413.25 | 399.75 |
| 17' Kit with Scissor Base and Water Ballast | 191435 | 373.75 | 362.50 | 343.75 | 332.50 | 191443 | 542.00 | 525.50 | 498.50 | 482.00 |
| Kit Includes: Hardware with Specified Base, Flag and Soft Carry Case | | | | | | | | | | USD MSRP (C) |

Kit Includes: Hardware with Specified Base, Flag and Soft Carry Case

USD MSRP (C)

Premium Teardrop Sail Sign

| Description | Item # | 1 | 2-5 | 6-11 | 12-24 | Item # | 1 | 2-5 | 6-11 | 12-24 |
|--|--------|--------|--------|--------|--------|--------|--------|--------|--------|----------|
| 6' Kit with Three-Legged Base and Water Ballast | 190979 | 237.90 | 230.80 | 218.90 | 211.80 | 190978 | 345.00 | 334.75 | 317.50 | 307.25 |
| 8' Kit with Scissor Base and Water Ballast | 190763 | 294.00 | 285.00 | 270.50 | 261.50 | 190762 | 413.00 | 400.50 | 380.00 | 367.50 |
| 11.5' Kit with Scissor Base and Water Ballast | 190765 | 343.25 | 333.00 | 315.75 | 305.50 | 190764 | 503.00 | 488.00 | 463.00 | 448.00 |
| 15' Kit with Scissor Base and Water Ballast | 190767 | 397.75 | 386.00 | 366.00 | 354.00 | 190766 | 593.00 | 575.00 | 545.50 | 527.50 |
| Kit Includes: Hardware with Specified Base, Flag and Soft Carry Case | | | | | | | | | | USD MSRP |

Kit Includes: Hardware with Specified Base, Flag and Soft Carry Case

USD MSRP (C)

Premium Razor Sail Sign

| Description | Item # | 1 | 2-5 | 6-11 | 12-24 | Item # | 1 | 2-5 | 6-11 | 12-24 |
|--|--------|--------|--------|--------|--------|--------|--------|--------|--------|--------------|
| 7' Kit with Three-Legged Base and Water Ballast | 190985 | 237.90 | 230.80 | 218.90 | 211.80 | 190984 | 345.00 | 334.75 | 317.50 | 307.25 |
| 9' Kit with Scissor Base and Water Ballast | 190757 | 294.00 | 285.00 | 270.50 | 261.50 | 190756 | 413.00 | 400.50 | 380.00 | 367.50 |
| 13' Kit with Scissor Base and Water Ballast | 190759 | 343.25 | 333.00 | 315.75 | 305.50 | 190758 | 503.00 | 488.00 | 463.00 | 448.00 |
| 17' Kit with Scissor Base and Water Ballast | 190761 | 397.75 | 386.00 | 366.00 | 354.00 | 190760 | 593.00 | 575.00 | 545.50 | 527.50 |
| Kit Includes: Hardware with Specified Base, Flag and Soft Carry Case | | | | | | | | | | USD MSRP (C) |

Kit Includes: Hardware with Specified Base, Flag and Soft Carry Case

USD MSRP (C)

Product Size
Sizes Vary

Finished Graphic Size
View Online Template

Production Lead Time: 4 days for Value and Premium / 2 days for Streamline from final proof approval

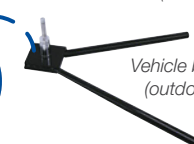
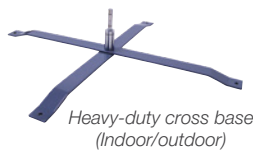


SAIL SIGN ACCESSORIES

1 YEAR
PRODUCT
WARRANTY

Sail Sign Accessories

| Item # | Description | Product Wt. | 1 | 2-5 | 6-11 | 12-24 |
|--------|------------------------|-------------|--------|--------|--------|--------|
| 190711 | Heavy-Duty Cross Base | 9 lbs. | 76.00 | 73.70 | 69.90 | 67.65 |
| 190709 | Vehicle Base | 4.5 lbs. | 65.70 | 63.75 | 60.45 | 58.45 |
| 190707 | Scissor Base | 7 lbs. | 65.70 | 63.75 | 60.45 | 58.45 |
| 190706 | Ground Spike | 2 lbs. | 43.10 | 41.81 | 39.65 | 38.36 |
| 190714 | 3-Legged Base | 1.25 lbs. | 32.10 | 31.14 | 29.53 | 28.57 |
| 191591 | Value Cross Base* | 2.8 lbs. | 31.60 | 30.65 | 29.07 | 28.12 |
| 191590 | Value Spike* | 2 lbs. | 31.60 | 30.65 | 29.07 | 28.12 |
| 190708 | Round Water Ballast | 0.5 lb. | 43.50 | 42.20 | 40.02 | 38.72 |
| 190710 | Square Water Ballast | 0.5 lb. | 43.50 | 42.20 | 40.02 | 38.72 |
| 220082 | Universal Product Case | 7 lbs. | 124.00 | 120.00 | 117.00 | 115.00 |



*Covered by a 90-day product warranty

Hardware Lead Time: Ships same day when ordered before 2 pm Central

Setup fee: \$20.00(G); no setup fee on orders placed via our website. View current graphic templates, assembly videos and instructions on our website.



Single-Sided



Single-sided flags are printed on one side; reverse image shows through the back.

Double-Sided



Double-sided flags have the image on both sides with a block-out liner in between.



Multiple finishing styles available.

NYLON FLAG

Lightweight and fade resistant, our nylon flags come in a variety of sizes and are perfect for indoor and outdoor use.

- Constructed of 200 denier nylon
- Standard finishing includes canvas header and brass grommets
- Four rows of lock-stitching provide extra reinforcement on the fly end of the flag
- Single-sided and double-sided options available
- Flags that are 8' x 12' and larger contain lap seams
- Custom sizes available (call for quote; restrictions may apply)
- Flags used outdoors have a 90-day warranty; flags used indoors have a 1-year warranty



Rectangle Nylon Flag

| Item # | Size | Product Wt. | 1 | 2-5 | 6-11 | 12-24 |
|--------|---------------------------|-------------|--------|--------|--------|--------|
| 304535 | 3' x 5' Flag Single-Sided | 0.5 lb. | 80.00 | 72.00 | 65.60 | 60.00 |
| 304555 | 3' x 5' Flag Double-Sided | 1.5 lbs. | 160.00 | 144.00 | 131.20 | 120.00 |
| 304536 | 4' x 6' Flag Single-Sided | 0.7 lb. | 110.00 | 99.00 | 90.20 | 82.50 |
| 304556 | 4' x 6' Flag Double-Sided | 2.1 lbs. | 220.00 | 198.00 | 180.40 | 165.00 |
| 304537 | 5' x 8' Flag Single-Sided | 1 lb. | 160.00 | 144.00 | 131.20 | 120.00 |
| 304557 | 5' x 8' Flag Double-Sided | 3 lbs. | 320.00 | 288.00 | 262.50 | 240.00 |

USD MSRP (C)

Production Lead Time: 4 days from final proof approval



BUILD YOUR OWN CUSTOM FLAGS

WITH OUR NEW QUICK & EASY ONLINE TOOL

Visit our website for accurate quotes and hassle-free ordering 24/7!

Under the Banners & Flags tab, click the Build Your Own Flags option.

FABRIC FLAG

Easy to hang, this flag works with any standard flagpole.

- Best for outdoor use
- Single-sided and double-sided options available
- Artwork is dye sublimated on super poly knit fabric
- Double-sided flags feature two layers sewn together with a block-out liner in between
- Custom sizes available (visit website or call for quote; restrictions may apply)
- Flags used outdoors have a 90-day warranty; flags used indoors have a 1-year warranty



Fabric Flag

| Item # | Description | Product Wt. | 1 | 2-5 | 6-11 | 12-24 |
|--------|---------------------------|-------------|--------|--------|--------|--------|
| 300007 | 3' x 5' Flag Single-Sided | 0.5 lb. | 80.00 | 72.00 | 65.60 | 60.00 |
| 300019 | 3' x 5' Flag Double-Sided | 1.25 lbs. | 160.00 | 144.00 | 131.20 | 120.00 |
| 300011 | 4' x 6' Flag Single-Sided | 1 lb. | 110.00 | 99.00 | 90.20 | 82.50 |
| 300020 | 4' x 6' Flag Double-Sided | 2 lbs. | 220.00 | 198.00 | 180.40 | 165.00 |
| 300015 | 5' x 8' Flag Single-Sided | 1 lb. | 148.00 | 133.20 | 121.40 | 111.00 |
| 300021 | 5' x 8' Flag Double-Sided | 3.25 lbs. | 296.00 | 266.50 | 242.75 | 222.00 |

USD MSRP (C)

Production Lead Time: 4 days from final proof approval

Single-sided flags are printed on one side; reverse image shows through the back.



SPIN 'N WIN PRIZE WHEEL

Give your next trade show or event a creative spin.

- Powder-coated steel legs
- A plastic clicker makes a ticking sound as the wheel spins
- Central disc panel attaches magnetically and remains stationary when the wheel spins
- All graphic panels can be custom printed with your design
- Prize wheels include twelve prize panels and central disc panel



Spin 'N Win Prize Wheel

| Item # | Description | 1 | 2-5 | 6-11 | 12-24 |
|--|-------------|--------|--------|--------------|--------|
| 280104 | Kit | 565.00 | 553.50 | 548.00 | 537.00 |
| Kit Includes: Hardware, Graphic Panels and Soft Carry Case | | | | USD MSRP (C) | |

| Product Size | Finished Graphic Size | Product Wt. | Graphic Media |
|------------------------------|-----------------------|-------------|--------------------------------|
| 31.25"W x 40.75"H x 16"-31"D | View Online Template | 16.5 lbs. | Titan™ No-Curl Laminated Media |

Production Lead Time: 2 days from final proof approval



Loud clicker attracts attention at noisy events.



Prize panels feature tabs that slide into grooves for easy installation.



Need a Tabletop Game?

Simply remove the leg extensions to transform this prize wheel into a game suitable for tabletop use.

BAG TOSS GAME

Toss in some friendly competition at your next outdoor event with this customizable game.

- Two game boards clasp together into a single unit that can be easily transported using the convenient carry handle
- Durable plastic construction prevents rust and splinters
- Included rope acts as a distance regulator
- Hinged legs fold out to prop the game boards up at an angle
- 90-day warranty on graphic panels



Bag Toss Game

| Item # | Description | 1 | 2-5 | 6-11 | 12-24 |
|--|-------------|--------|--------|--------------|--------|
| 280310 | Kit | 238.00 | 233.20 | 230.90 | 226.10 |
| Kit Includes: Hardware, 8 Bean Bags and 2 Graphic Panels | | | | USD MSRP (C) | |

| Product Size | Finished Graphic Size | Product Wt. | Media |
|---|---|-------------|--------------------------------|
| Folded: 21.5"W x 2.75"H x 33.125"D (1) Open: 21.5"W x 10.5"H x 32.75"D | 19.5"W x 29.625"H (View Online Template) | 21.5 lbs. | Titan™ No-Curl Laminated Media |

Production Lead Time: 3 days from final proof approval



Built-in score keepers slide up and down the edges of the board.



Bean bags can be stored inside plastic molded pockets so they don't get left behind.



Setup fee: \$20.00(G); no setup fee on orders placed via our website. View current graphic templates, assembly videos and instructions on our website.



STANDARD 10' TENT

This popular tent strikes a perfect balance between cost effectiveness and portability.

- 1 mm pebble powder-coated steel frame
- 1.125" square legs
- ABS nylon joints
- Crank-up canopy creates a taut, clean peak
- Stake kit and wheeled carry case included
- 10' canopy available in eight stock colors (see below)

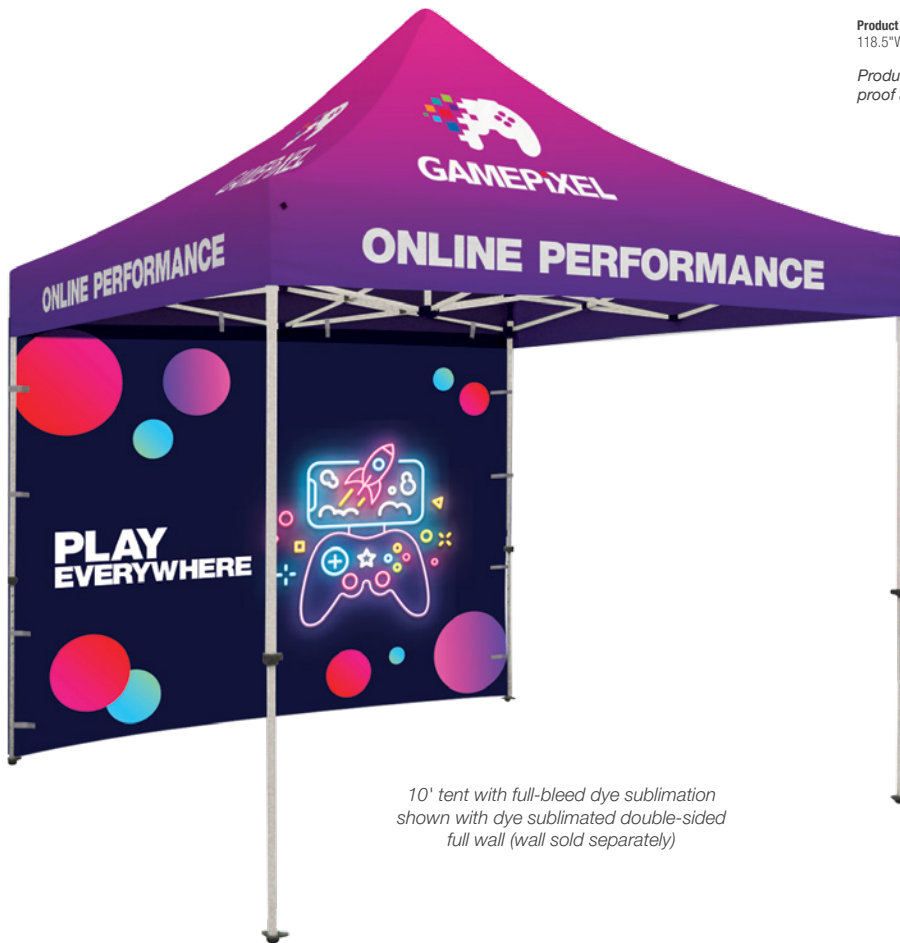


Standard 10' Tent

| Item # | Description | 1 | 2-5 | 6-11 | 12-24 |
|--------|--------------------------------------|--------------|---------|---------|---------|
| 240611 | Full-Color Imprint Kit (1 Location) | 569.00 | 557.00 | 545.25 | 528.25 |
| 240612 | Full-Color Imprint Kit (2 Locations) | 643.00 | 629.00 | 615.25 | 596.25 |
| 240614 | Full-Color Imprint Kit (4 Locations) | 791.00 | 773.00 | 755.25 | 732.25 |
| 240618 | Full-Color Imprint Kit (8 Locations) | 1087.00 | 1061.00 | 1035.25 | 1004.25 |
| 240619 | Dye Sublimation Kit | 1213.00 | 1187.00 | 1161.25 | 1130.25 |
| | | USD MSRP (C) | | | |

| Product Size | Imprint Graphic Size | Dye Sub Graphic Size | Product Wt. |
|---------------------------|--|----------------------|-------------|
| 118.5"W x 127.5"H x 140"D | Peak: 44"W x 24"H; Valance: 60"W x 8"H | View Online Template | 51.5 lbs. |

Production Lead Time: 3 days for full-color imprint / 7 days for dye sublimation from final proof approval



10' tent with full-bleed dye sublimation shown with dye sublimated double-sided full wall (wall sold separately)



Easy-Glide Tent Feet allow the tent frame to slide on dirt and grass, preventing the legs from catching. US Patent #D760857



Legs feature plastic push buttons for pinch-free height adjustments.

Tent Features & Benefits



Sets up in minutes.



Adjust tent height with the push of a button.



Crank-up canopy creates a taut, clean peak.



Secure tent to the ground with stake kit.



Collapses easily to store in soft case with wheels.

10' Tent Stock Canopy Colors



PMS colors are for reference only and may vary slightly from actual color.

Setup fee: \$20.00(G); no setup fee on orders placed via our website. View current graphic templates, assembly videos and instructions on our website.

DELUXE 6' TENT

6' tents are compact enough for use indoors or in tight spaces.

- 1 mm pebble powder-coated steel frame
- 1.25" square legs
- ABS glass-filled nylon joints
- Crank-up canopy creates a taut, clean peak
- Stake kit and wheeled carry case included
- 6' canopy available in four stock colors (black, red, royal blue and white)



Deluxe 6' Tent

| Item # | Description | 1 | 2-5 | 6-11 | 12-24 |
|--------|--------------------------------------|--------------|---------|---------|---------|
| 240801 | Full-Color Imprint Kit (1 Location) | 614.00 | 601.00 | 588.50 | 570.00 |
| 240802 | Full-Color Imprint Kit (2 Locations) | 688.00 | 673.00 | 658.50 | 638.00 |
| 240804 | Full-Color Imprint Kit (4 Locations) | 836.00 | 817.00 | 798.50 | 774.00 |
| 240808 | Full-Color Imprint Kit (8 Locations) | 1132.00 | 1105.00 | 1078.50 | 1046.00 |
| 240809 | Dye Sublimation Kit | 1258.00 | 1231.00 | 1204.50 | 1172.00 |
| | | USD MSRP (C) | | | |

Product Size 72"W x 109"H x 121.5"H x 72"D Imprint Graphic Size Peak: 24"W x 20"H; Valance: 50"W x 8"H Dye Sub Graphic Size View Online Template Product Wt. 48.5 lbs.

Production Lead Time: 3 days for full-color imprint / 7 days for dye sublimation from final proof approval



Legs feature levers for easy height adjustments.



Easy-Glide Tent Feet allow the tent frame to slide on dirt and grass, preventing the legs from catching. US Patent #D760857



6' tent with full-color imprint (8 locations)

PREMIUM 10' & 20' TENTS

These Premium tents feature a strong aluminum frame with sturdy hexagon-shaped legs.

- 0.8 mm anodized aluminum frame
- ABS glass-filled nylon joints
- 1.75" diameter hexagon legs for strength
- Crank-up canopy creates a taut, clean peak
- Stake kit and wheeled carry case included
- 10' canopy available in eight stock colors (see page 16);
- 20' canopy available in white



Premium 10' Tent

| Item # | Description | 1 | 2-5 | 6-11 | 12-24 |
|--------|--------------------------------------|--------------|---------|---------|---------|
| 240631 | Full-Color Imprint Kit (1 Location) | 809.00 | 792.50 | 775.50 | 751.50 |
| 240632 | Full-Color Imprint Kit (2 Locations) | 883.00 | 864.50 | 845.50 | 819.50 |
| 240634 | Full-Color Imprint Kit (4 Locations) | 1031.00 | 1008.50 | 985.50 | 955.50 |
| 240638 | Full-Color Imprint Kit (8 Locations) | 1327.00 | 1296.50 | 1265.50 | 1227.50 |
| 240639 | Dye Sublimation Kit | 1453.00 | 1422.50 | 1391.50 | 1353.50 |
| | | USD MSRP (C) | | | |

Premium 10' x 20' Tent

| Item # | Description | 1 | 2-5 | 6-11 | 12-24 |
|--------|---------------------------------------|--------------|---------|---------|---------|
| 240571 | Full-Color Imprint Kit (1 Location) | 1039.00 | 1017.50 | 996.50 | 965.50 |
| 240572 | Full-Color Imprint Kit (2 Locations) | 1113.00 | 1089.50 | 1066.50 | 1033.50 |
| 240574 | Full-Color Imprint Kit (4 Locations) | 1261.00 | 1233.50 | 1206.50 | 1169.50 |
| 240578 | Full-Color Imprint Kit (8 Locations) | 1557.00 | 1521.50 | 1486.50 | 1441.50 |
| 240582 | Full-Color Imprint Kit (12 Locations) | 1853.00 | 1809.50 | 1766.50 | 1713.50 |
| 240583 | Dye Sublimation Kit | 1990.00 | 1946.50 | 1903.50 | 1850.50 |
| | | USD MSRP (C) | | | |

Description Product Size Imprint Graphic Size Dye Sub Graphic Size Product Wt.
10' Tent 118"W x 126.75"-139.25"H x 118"D Peak: 44"W x 24"H; Valance: 60"W x 8"H View Online Template 52 lbs.
10' x 20' Tent 234.5"W x 126.75"-139.25"H x 118.25"D Peak: 44"W x 24"H; Valance: 60"W x 8"H View Online Template 92 lbs.

Production Lead Time: 3 days for full-color imprint / 7 days for dye sublimation from final proof approval



20' tent with full-bleed dye sublimation

10' tent with full-bleed dye sublimation



Easy-Glide Tent Feet allow the tent frame to slide on dirt and grass, preventing the legs from catching. US Patent #D760857



Legs feature levers for easy height adjustments.



Signicade Deluxe



Signicade Deluxe Chalkboard

Chalkboard lets you display personalized, hand-written messages (chalk markers recommended; not included).



Simpo Sign II



SIGNICADE® AND SIMPO II A-FRAMES

With different sizes to choose from, these A-frames fit a variety of spaces.

- Maintenance-free and weather-resistant
- Folds flat for transport or storage



Simpo Sign II A-Frame

| Item # | Description | 1 | 2-5 | 6-11 | 12-24 |
|--------|------------------|--------|--------|--------|--------|
| 210091 | Single-Sided Kit | 205.10 | 198.60 | 189.50 | 184.60 |
| 210092 | Double-Sided Kit | 215.70 | 209.20 | 199.40 | 194.50 |

Kit Includes: Hardware and 2 Single- or Double-Sided Signboards USD MSRP (C)

| Product Size | Finished Graphic Size | Product Wt. | Media |
|-------------------------|-----------------------|-------------|-------------------------|
| 24"W x 36.75"H x 21.5"D | 22"W x 28"H | 10.5 lbs. | 4 mm Corrugated Plastic |

Frame Color ☐ White

Signicade Deluxe A-Frame

| Item # | Description | 1 | 2-5 | 6-11 | 12-24 |
|--------|------------------|--------|--------|--------|--------|
| 210121 | Single-Sided Kit | 189.10 | 183.20 | 174.70 | 170.30 |
| 210122 | Double-Sided Kit | 202.30 | 196.40 | 187.10 | 182.70 |
| 210280 | Chalkboard* Kit | 239.20 | 233.30 | 220.60 | 216.20 |

Kit Includes: Black or White Hardware and 2 Single- or Double-Sided Signboards USD MSRP (C)

*Chalkboard is single-sided and unprinted

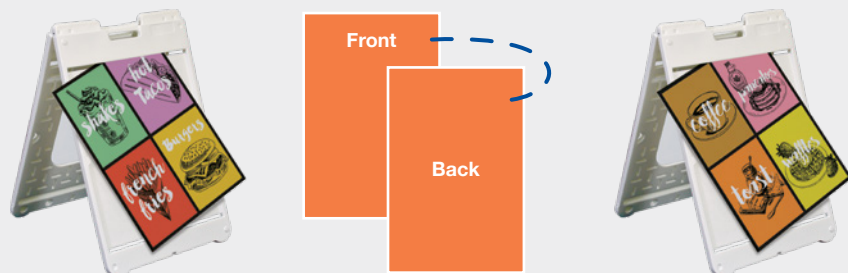
| Product Size | Finished Graphic Size | Product Wt. | Media |
|----------------------|-----------------------|-------------------|---|
| 27"W x 38.5"H x 19"D | 24"W x 36"H | 21 lbs. / 25 lbs. | 4 mm Corrugated Plastic Chalkboard Laminated Rigid PVC Board |

Frame Colors ☒ Black ☐ White

Production Lead Time: 2 days from final proof approval

Double-Sided Signboards - One Signboard, Two Sides.

Double-sided signboards have your artwork printed on both sides, making each signboard reversible.



Plastic base won't rust, making it great for outdoor use.

Convenient molded handle makes it easy to move.

Frames can be filled with sand for stability.

Signboards are easy to swap out to accommodate frequent message changes.

FLOOR HUGGER MAT

The Floor Hugger mat features a nylon yarn surface with black rubber borders and backing.

- Treated with Stainstopper™ and static dissipative
- Will not crack or curl
- Mat sizes are not exact; allow 3-5% size variance
- Not eligible for Rush Service
- Additional sizes available online

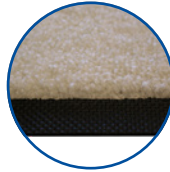


Floor Hugger Mat

| Item # | Description | Product Wt. | 1 | 2-5 | 6-10 | 11-25 |
|--------------|-------------|-------------|--------|--------|--------|--------|
| 259002 | 4' x 6' Mat | 12 lbs. | 348.00 | 285.25 | 247.00 | 236.75 |
| USD MSRP (C) | | | | | | |

Light colors show dirt easily and are not recommended for background colors.
Item has limited number of available colors (150). We cannot guarantee color matching.
Test strip/match print/test grid not available.

Production Lead Time: 7 days from final proof approval



Mat features chemical-resistant plush carpet.



GALLERY SIGNBOARD

Turn your favorite photos and memories into beautiful decoration pieces with our hanging Gallery Signboards.

- Print is gallery-wrapped around frame to maximize graphic space
- Signboards come with a finished back; hanging hardware is included
- Floating Gallery Signboards allow the print to pop within a black frame
- Artwork is printed with UV protected ink on durable canvas fabric
- Wood frames are sourced from sustainable Appalachian hardwood lumber
- Additional sizes available online



Gallery Signboards

| Item # | Description | 1 | 2-5 | 6-11 | 12-24 |
|--------------|--------------------------------------|--------|--------|--------|--------|
| 325401 | 11" x 14" Gallery Signboard | 70.00 | 67.90 | 65.10 | 63.00 |
| 325411 | 11" x 14" Floating Gallery Signboard | 115.00 | 111.60 | 107.00 | 103.50 |
| 325402 | 12" x 12" Gallery Signboard | 75.00 | 72.75 | 69.75 | 67.50 |
| 325412 | 12" x 12" Floating Gallery Signboard | 130.00 | 126.10 | 120.90 | 117.00 |
| 325403 | 16" x 20" Gallery Signboard | 90.00 | 87.30 | 83.70 | 81.00 |
| 325413 | 16" x 20" Floating Gallery Signboard | 160.00 | 155.20 | 148.80 | 144.00 |
| 325405 | 20" x 30" Gallery Signboard | 120.00 | 116.40 | 111.60 | 108.00 |
| 325415 | 20" x 30" Floating Gallery Signboard | 220.00 | 213.40 | 204.60 | 198.00 |
| USD MSRP (C) | | | | | |

Production Lead Time: 3 days from final proof approval



11" x 14" Floating Gallery Signboard



16" x 20" Gallery Signboard

GLOSSY ALUMINUM SIGNBOARD

Add some flair to your art by showing it off on a sleek and modern-looking aluminum sign.

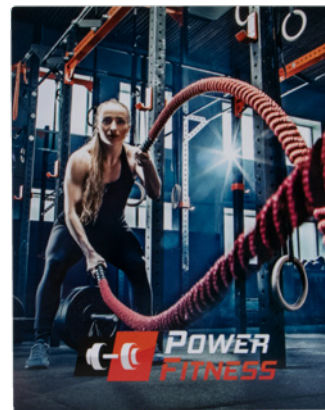
- Scratch-resistant for long-term use
- Printed on single-sided aluminum with white basecoat to make colors pop
- Available with installed shadow mount or as signboard only
- No assembly required
- Additional sizes available online



Glossy Aluminum Signboard

| Item # | Description | Product Wt. | 1 | 2-5 | 6-11 | 12-24 |
|--------------|---------------------|-------------|--------|--------|--------|--------|
| 264202 | 8" x 10" Signboard | 0.25 lb. | 20.00 | 19.40 | 18.80 | 18.20 |
| 264206 | 11" x 14" Signboard | 0.45 lb. | 42.00 | 40.74 | 39.48 | 38.22 |
| 264204 | 12" x 12" Signboard | 0.4 lb. | 29.00 | 28.13 | 27.26 | 26.39 |
| 264210 | 16" x 16" Signboard | 0.7 lb. | 41.00 | 39.77 | 38.54 | 37.31 |
| 264216 | 20" x 30" Signboard | 1.8 lbs. | 120.00 | 116.40 | 112.80 | 109.20 |
| 264218 | 24" x 36" Signboard | 2.6 lbs. | 210.00 | 203.70 | 197.40 | 191.10 |
| USD MSRP (C) | | | | | | |

Production Lead Time: 2 days from final proof approval



8" x 10"



Add-On

Glossy Aluminum Signboard Stand

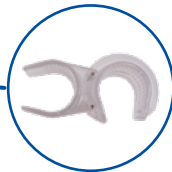
| Item # | Description | Product Wt. | 1 | 2-5 | 6-11 | 12-24 |
|---|-------------|-------------|-------|-------|-------|-------|
| 264092 | 8" Stand | 0.2 lb. | 12.50 | 12.00 | 11.50 | 11.13 |
| 8" Stand holds up to a 12" x 12" aluminum signboard. USD MSRP (C) | | | | | | |

Hardware Lead Time: Ships same day when ordered before 2 pm Central

EUROFIT WALLS

The ever-expanding EuroFit line offers many elegant and versatile display solutions.

- Artwork is vibrantly dye sublimated on polyester knit
- Hinge together several separate EuroFit displays with the EuroFit Connector
- Create modular layouts with limitless possibilities
- More options available online



Compatible displays can be hinged together using the EuroFit Connector. US Patent #9637963. Available online.



90"H EuroFit Straight Wall

| Item # | Description | 1 | 2-5 | 6-11 | 12-24 |
|--------|-------------|---------|---------|---------|---------|
| 256215 | 3'W Kit | 332.00 | 322.00 | 313.00 | 302.00 |
| 256233 | 5'W Kit | 500.00 | 485.00 | 471.00 | 455.00 |
| 255180 | 8'W Kit | 760.00 | 737.00 | 714.00 | 692.00 |
| 256251 | 10'W Kit | 1335.00 | 1310.00 | 1270.00 | 1245.00 |
| 256427 | 20'W Kit | 2635.00 | 2605.00 | 2505.00 | 2475.00 |

Kit Includes: Hardware, Graphic Cover, EuroFit Connector and Soft Carry Case

20' Display Includes: Hardware, Graphic Cover, 2 EuroFit Connectors and 2 Soft Carry Cases

| Description | Product Size | Finished Graphic Size | Product Wt. | Media |
|-------------|--------------------------|-----------------------|-------------|----------------|
| 3'W | 36.5"W x 91.25"H x 19"D | View Online Template | 10.3 lbs. | Polyester Knit |
| 5'W | 60.5"W x 91.25"H x 19"D | View Online Template | 12.6 lbs. | Polyester Knit |
| 8'W | 96.5"W x 91.25"H x 19"D | View Online Template | 18 lbs. | Polyester Knit |
| 10'W | 115.5"W x 91.25"H x 19"D | View Online Template | 21.25 lbs. | Polyester Knit |
| 20'W | 231"W x 91.25"H x 19"D | View Online Template | 42.75 lbs. | Polyester Knit |

Production Lead Time: 4 days from final proof approval

72"H EuroFit Straight Wall

| Item # | Description | 1 | 2-5 | 6-11 | 12-24 |
|--------|-------------|--------|--------|--------|--------|
| 256203 | 2'W Kit | 208.00 | 201.00 | 196.00 | 189.00 |
| 256212 | 3'W Kit | 275.00 | 264.00 | 253.00 | 238.00 |

Kit Includes: Hardware, Graphic Cover, EuroFit Connector and Soft Carry Case

| Description | Product Size | Finished Graphic Size | Product Wt. | Media |
|-------------|----------------------|-----------------------|-------------|----------------|
| 2'W | 24.5"W x 72"H x 19"D | View Online Template | 7.5 lbs. | Polyester Knit |
| 3'W | 36.5"W x 72"H x 19"D | View Online Template | 8.25 lbs. | Polyester Knit |

Production Lead Time: 4 days from final proof approval





SPLASH DISPLAY

This pop-up display transforms from a compact unit to an impressive backdrop in minutes.

- Graphic panels available in polyester knit and Block-out fabric
- Hook-and-loop fasteners make graphic panel installation simple
- Aluminum frame with nylon plastic hubs
- US Patent #9214104
- More options available online



8' Straight Splash

| Item # | Description | Product Wt. | 1 | 2-5 | 6-11 | 12-24 |
|--------|------------------------------|-------------|---------|---------|---------|---------|
| 341004 | 8' Polyester Knit Face Kit | 19.25 lbs. | 975.00 | 955.00 | 935.00 | 920.00 |
| 342208 | 8' Block-Out Fabric Face Kit | 20 lbs. | 1055.00 | 1035.00 | 1015.00 | 995.00 |
| 341005 | 8' Polyester Knit Wrap Kit | 20 lbs. | 1170.00 | 1150.00 | 1130.00 | 1115.00 |
| 342209 | 8' Block-Out Fabric Wrap Kit | 20.8 lbs. | 1250.00 | 1230.00 | 1210.00 | 1190.00 |

Kit Includes: Frame, Graphic Panel and Soft Carry Case

USD MSRP (C)

Product Size

90"W x 89.5"H x 12.25"D

Finished Graphic Size

View Online Template

10' Straight Splash

| Item # | Description | Product Wt. | 1 | 2-5 | 6-11 | 12-24 |
|--------|-------------------------------|-------------|---------|---------|---------|---------|
| 341008 | 10' Polyester Knit Face Kit | 23.75 lbs. | 1170.00 | 1150.00 | 1130.00 | 1115.00 |
| 342212 | 10' Block-Out Fabric Face Kit | 24.5 lbs. | 1250.00 | 1230.00 | 1210.00 | 1190.00 |
| 341009 | 10' Polyester Knit Wrap Kit | 24.75 lbs. | 1365.00 | 1345.00 | 1325.00 | 1310.00 |
| 342213 | 10' Block-Out Fabric Wrap Kit | 26 lbs. | 1440.00 | 1420.00 | 1400.00 | 1380.00 |

Kit Includes: Frame, Graphic Panel and Soft Carry Case

USD MSRP (C)

Product Size

119"W x 89.5"H x 12.25"D

Finished Graphic Size

View Online Template

Production Lead Time: 3 days from final proof approval

Kit Options



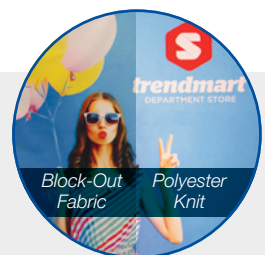
Face Graphic Kit
Graphic panel covers the front of the frame; excludes 20' Splash.



Wrap Graphic Kit
Graphic panel covers the front and two sides of the frame. Back of the frame is not covered.

Block-Out Fabric

Block-out fabric is designed to prevent light from showing through the display. It is a good option for brightly lit areas.





12-Quad Classic



Graphic panels are finished with white stitching.



Shelf has rounded corners and supports up to 15 lbs.



Deluxe GeoMetrix pegs hold up to six panels each.

DELUXE GEOMETRIX DISPLAY

A strong, durable frame supports multiple graphic panels and shelves so you have countless options for setting up a creative display.

- Setup and teardown can be done in seconds
- Artwork is dye sublimated on polyester double knit
- Aluminum frame with nylon plastic hubs
- Additional kits and graphic panel kits are available online
- US Patent #9214104



Deluxe GeoMetrix Displays

| Item # | Description | 1 | 2-5 | 6-11 | 12-24 |
|--------|---------------------|---------|---------|---------|---------|
| 342010 | 3-Quad Tower Kit | 620.00 | 610.00 | 595.00 | 585.00 |
| 342004 | 9-Quad Header Kit | 1360.00 | 1330.00 | 1300.00 | 1270.00 |
| 342000 | 12-Quad Classic Kit | 1605.00 | 1575.00 | 1545.00 | 1515.00 |

Kit Includes: Frame, Graphic Panels, Internal Shelf(s) and Soft Carry Case USD MSRP (C)
Shelves do not fit in provided soft carry case.
See website for shelf soft carry case.

| Description | Product Size | Finished Graphic Size | Product Wt. | Media |
|-----------------|-------------------------|-----------------------|-------------|-----------------------|
| 3-Quad Tower | 31.25"W x 89.5"H x 13"D | View Online Template | 11 lbs. | Polyester Double Knit |
| 9-Quad Header | 90"W x 89.5"H x 13"D | View Online Template | 27 lbs. | Polyester Double Knit |
| 12-Quad Classic | 118"W x 89.5"H x 13"D | View Online Template | 30.5 lbs. | Polyester Double Knit |

Production Lead Time: 4 days from final proof approval



3-Quad Tower



9-Quad Header



Ultimate LED Double Light Kit

| Item # | 1 | 2-5 | 6-11 | 12-24 |
|--------|--------|--------|--------|--------|
| 150121 | 270.00 | 262.00 | 253.75 | 245.75 |

Kit Includes: Lights, Clamps, Clips, USB Adapter and Soft Carry Case USD MSRP (C)

Hardware Lead Time: Ships same day when ordered before 2 pm Central

Add-Ons



Deluxe GeoMetrix Internal Shelves US Patent #D804,228

| Item # | Description | 1 | 2-5 | 6-11 | 12-24 |
|--------|----------------------|--------|--------|--------|--------|
| 338050 | Internal Shelf | 111.00 | 109.00 | 106.00 | 102.00 |
| 338068 | Clear Internal Shelf | 118.00 | 114.00 | 111.00 | 107.00 |

Internal shelves support up to 15 lbs. USD MSRP (C)

MICRO GEOMETRIX DISPLAY

Create a variety of multi-dimensional displays in seconds with the Micro GeoMetrix.

- Lightweight aluminum frame with plastic hubs
- Artwork is dye sublimated on polyester double knit
- Additional kits, graphic panels, and hardware available online

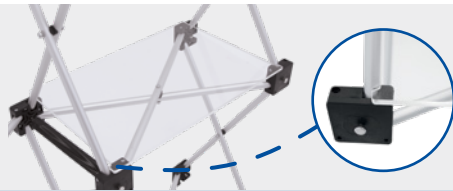


Micro GeoMetrix Classic

| Item # | Description | 1 | 2-5 | 6-11 | 12-24 |
|--|-------------|--------|--------|--------------|--------|
| 337207 | Kit | 410.00 | 393.50 | 381.25 | 360.75 |
| Kit Includes: Nine-Quad Square Frame, 5 Graphic Panels and Soft Carry Case | | | | USD MSRP (C) | |

| Product Size | Finished Graphic Size | Product Wt. | Media |
|-------------------------|-----------------------|-------------|-----------------------|
| 46"W x 46.75"H x 9.62"D | View Online Template | 9.25 lbs. | Polyester Double Knit |

Production Lead Time: 4 days from final proof approval



Add-On

Micro GeoMetrix Shelf

| Item # | Description | 1 | 2-5 | 6-11 | 12-24 |
|--|-------------------------------|-------|-------|--------------|-------|
| 338069 | Straight Internal Clear Shelf | 36.10 | 34.66 | 33.57 | 31.77 |
| Each shelf supports up to 5 lbs. Compatible with frames equipped with locking arms only. | | | | USD MSRP (C) | |

Hardware Lead Time: Ships same day when ordered before 2 pm Central

Shown on a 6' Standard throw and 57" dye-sublimated Accent Runner (throw and runner sold separately)



MINI TABLETOP DISPLAYS

These displays fit into small areas, making them perfect for tables and countertops.

- Lightweight and portable
- Warranties range between six and three years (see website for details)
- Kit contents vary (see website for details)

Mini Retractors

| Item # | Description | 1 | 2-5 | 6-11 | 12-24 |
|--------|--|--------|--------|--------------|--------|
| 262014 | Deluxe Mini Kit | 60.00 | 57.60 | 55.80 | 52.80 |
| 210240 | Small Mini Promo Kit | 46.50 | 44.64 | 43.25 | 40.92 |
| 210242 | Large Mini Promo Kit | 52.00 | 49.90 | 48.35 | 45.75 |
| 261130 | Economy Tabletop No-Curl Hybrid Media Kit | 141.60 | 133.10 | 127.50 | 119.00 |
| 262160 | Economy Tabletop No-Curl Opaque Fabric Kit | 141.60 | 133.10 | 127.50 | 119.00 |
| 261195 | MagnaLink Tabletop Kit | 239.30 | 225.00 | 215.40 | 201.00 |
| | | | | USD MSRP (C) | |

| Product Size | Finished Graphic Size |
|--------------|-----------------------|
| Sizes Vary | View Online Template |

Production Lead Time: 2-4 days from final proof approval

Hardware Lead Time: Ships same day when ordered before 2 pm Central

Mini Displays

| Item # | Description | 1 | 2-5 | 6-11 | 12-24 |
|--------|------------------------------------|--------|--------|--------------|-------|
| 280370 | EuroFit Mini Kit | 77.30 | 74.20 | 71.90 | 68.05 |
| 210032 | Mini X Banner Display Kit | 29.90 | 28.70 | 27.81 | 26.31 |
| 210245 | Monopode Single-Sided Tabletop Kit | 112.80 | 108.30 | 104.90 | 99.30 |
| 264360 | 24"W x 35"H Xpress Kit | 95.00 | 91.20 | 88.35 | 83.60 |
| 264361 | 35"W x 24"H Xpress Kit | 95.00 | 91.20 | 88.35 | 83.60 |
| 304757 | Base for One 4" x 6" Stick Flag | 1.95 | 1.79 | 1.68 | 1.56 |
| 304758 | Base for Two 4" x 6" Stick Flags | 2.75 | 2.53 | 2.37 | 2.20 |
| 304759 | Base for Three 4" x 6" Stick Flags | 2.75 | 2.53 | 2.37 | 2.20 |
| | | | | USD MSRP (C) | |

| Item # | Description | 1 | 5 | 6-11 | 12-24 |
|--------|---|----|-------|--------------|-------|
| 191540 | Micro Teardrop Sail Sign Single-Sided Kit | NA | 41.61 | 39.47 | 38.18 |
| 191541 | Micro Teardrop Sail Sign Double-Sided Kit | NA | 66.85 | 63.40 | 61.30 |
| | | | | USD MSRP (C) | |

Setup fee: \$20.00(G); no setup fee on orders placed via our website. View current graphic templates, assembly videos and instructions on our website.

VINYL & FABRIC BANNERS NO SETUP FEES ALL YEAR*

PROMO CODE S21BFSU12



- NO setup fees!*
- Wide variety of materials.
- Available for delivery in as little as two days.

See pages 62-66 in our 2021 Product Guide for details.

**Must use promo code when ordering*



**WE'RE BEYOND COMPLIANT.
WE'RE APPROVED!**

One of the pillars of our On Target Guarantee is a Commitment to Safety and Quality. In keeping true to this, all of our 2021 catalog products are not just Prop 65 compliant — they are actually approved. They have met and passed all Prop 65 testing standards. This means no warning labels are necessary and no worries for California sales.