

OUTDOOR EVENTS 2022



DISPLAY SOLUTIONS
PROMOTIONS • EVENTS • TRADE SHOWS

TENT COMPARISON CHART

BEST SELLERS ★ - 10' IS OUR MOST POPULAR SIZE STANDARD	FRAME / CANOPY WARRANTY	CONSTRUCTION		FRAME WEIGHT	TOTAL SIZE	WIND RATING	STOCK CANOPY COLORS
10' ★	1 year / 1 year	STEEL 1.125"W LEGS	<ul style="list-style-type: none"> 1 mm powder-coated steel plastic push button for height adjustments ABS nylon joints 	36 lbs.	118.5"W x 127.5"-140"H x 118.5"D	5 ² WIND RATING	
DELUXE							
6' 8' ★ 10'	2 years / 1 year	STEEL 1.25"W LEGS	<ul style="list-style-type: none"> 1 mm powder-coated steel lever for height adjustments ABS glass-filled nylon joints 	38.5 lbs. 44.5 lbs. 48 lbs. 49.6 lbs.	72"W x 109"-121.5"H x 72"D 96"W x 117.5"-130"H x 96"D 118.5"W x 127"-139.5"H x 118.5"D 118.5"W x 151.75"-164.25"H x 118.5"D	5 ² WIND RATING	 dye sublimation only
PREMIUM							
10' ★ 15' 20' ★	5 years / 1 year	ALUMINUM 1.75" DIA. HEXAGON LEGS	<ul style="list-style-type: none"> 0.8 mm anodized aluminum lever for height adjustments ABS glass-filled nylon joints 	36.5 lbs. 46 lbs. 62.75 lbs.	118"W x 126.75"-139.25"H x 118"D 175.5"W x 126.75"-139.25"H x 118.25"D 234.5"W x 126.75"-139.25"H x 118.25"D	5 ² WIND RATING	 white only
PREMIUM GABLE							
10' 15' 20'	5 years / 1 year	ALUMINUM 1.75" DIA. HEXAGON LEGS	<ul style="list-style-type: none"> 0.8 mm anodized aluminum lever for height adjustments ABS glass-filled nylon joints 	37.4 lbs. 47.2 lbs. 64 lbs.	118"W x 119.25"-131.5"H x 118"D 175.5"W x 119.25"-131.75"H x 118.25"D 234.5"W x 119.25"-131.75"H x 118.25"D	5 ² WIND RATING	 white only
ELITE							
10'	Lifetime / 1 year	ALUMINUM 2.125" DIA. HEXAGON LEGS	<ul style="list-style-type: none"> 1.55 mm anodized aluminum lever for height adjustments machined aluminum joints 	63 lbs.	118"W x 116.75"-128.25"H x 118"D	5 ² WIND RATING	
COMPACT							
10'	1 year / 1 year	ALUMINUM 1.25"W LEGS	<ul style="list-style-type: none"> 1 mm anodized aluminum lever for height adjustments ABS glass-filled nylon joints 	38.4 lbs.	118.5"W x 121"-133.5"H x 118.5"D	5 ² WIND RATING	

3² Beaufort Wind Rating: Select products have been rated on the Beaufort Wind Scale. Wind ratings were determined utilizing all available securing/stabilizing options sold with or offered for the product. Review the Beaufort Scale on showdowndisplays.com for additional details.
Disclaimer: Wind rating conducted in a controlled environment. Outdoor products should be taken down if bad weather is likely. Wind gusts and heavy rain could reduce the wind resistance of these products.

QUICK & EASY SETUP FEATURES



Sets up in minutes.



Adjust tent height with the push of a button.



Crank-up canopy creates a taut, clean peak.



Secure tent to the ground with stake kit.



Collapses easily to store in soft case with wheels.



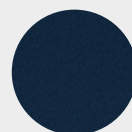
Patent #D760857
Easy-Glide Tent Feet for mobility.

TENT CANOPY

UPDATES TO 10' STOCK CANOPY COLORS



PMS colors are for reference only and may vary slightly from actual color.



Constructed of durable 400 denier polyester.



Canopies covered by a 1-year warranty.



Flame retardant certified for exhibit hall use.

TWO PRINT METHODS



Full-Color Imprint

Imprinted on peak and valance locations of your choice. One imprint per location (peak or valance). Only one setup fee per tent.

Dye Sublimation

Covers the entire canopy with vibrant, full-color artwork.* One piece per side for a continuous image from peak to valance with no seams.

*Not available on vented canopies

Prices are subject to change; visit our website for the most current pricing.

Setup fee: \$20.00(G); no setup fee on orders placed via our website. View current graphic templates, assembly videos and instructions on our website.

PREMIUM GABLE TENTS

This tent stands out from the crowd with a unique gable shape, allowing for more visible space to share your message.

- Available in 10', 15' and 20' sizes
- 1.75" diameter hexagon legs comprised of 0.8 mm anodized aluminum frame
- ABS glass-filled nylon joints
- 10' x 10' tents have three center poles, 10' x 15' have four center poles and 10' x 20' have five center poles
- 10' canopy available in eight stock colors (see page 2) or with full-bleed dye sublimation
- 15' and 20' canopies available in white or with full-bleed dye sublimation

Premium Gable 10' x 10' Tent

Item #	Description	1	2-5	6-11	12-24
241120	Unimprinted Kit	1005.00	985.00	965.00	935.00
241121	Full-Color Imprint Kit (1 Location)	1094.00	1072.00	1050.00	1018.00
241122	Full-Color Imprint Kit (2 Locations)	1183.00	1159.00	1135.00	1101.00
241124	Full-Color Imprint Kit (4 Locations)	1361.00	1333.00	1305.00	1267.00
241126	Full-Color Imprint Kit (6 Locations)	1539.00	1507.00	1475.00	1433.00
241128	Full-Color Imprint Kit (8 Locations)	1717.00	1681.00	1645.00	1599.00
241129	Dye Sublimation Kit	1874.00	1838.00	1802.00	1756.00
		USD MSRP (C)			

Product Size	Imprint Graphic Size	Dye Sub Graphic Size	Product Wt.
118"W x 119.25"-131.75"H x 118"D	Flat Peak: 44"W x 11.25"H; Sloping Peak: 44"W x 24"H Valance: 60"W x 8"H	View Online Template	55 lbs.

Production Lead Time: 4-7 days from final proof approval
Unimprinted kit ships same day when ordered before 2 pm Central



Center poles crank up to create a taut gable shape.

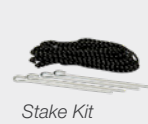


Easy-Glide Tent Feet allow the tent frame to slide on dirt and grass, preventing the legs from catching. US Patent #D760857



Legs feature levers for easy height adjustments.

Kit Includes:



SUMMIT 10' TENT

Bring your brand to new heights with our tallest tent yet.

- Exclusive to the Summit tent, the extender pole increases peak height by more than a foot
- Larger graphic space increases brand visibility
- 1.25"W square legs comprised of 1 mm pebble powder-coated steel frame
- ABS glass-filled nylon joints
- Crank-up canopy creates a taut, clean peak
- Canopy is available in full-bleed dye sublimation

Summit 10' Tent

Item #	Description	1	2-5	6-11	12-24
241222	Dye Sublimation Kit	1870.00	1832.00	1795.00	1739.00
		USD MSRP (C)			

Product Size	Dye Sub Graphic Size	Product Wt.
118.5"W x 151.75"-164.25"H x 118.5"D	View Online Template	67.5 lbs.

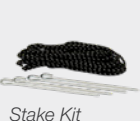
Production Lead Time: 7 days from final proof approval



Extender pole cranks up to create our highest tent peak.



Kit Includes:

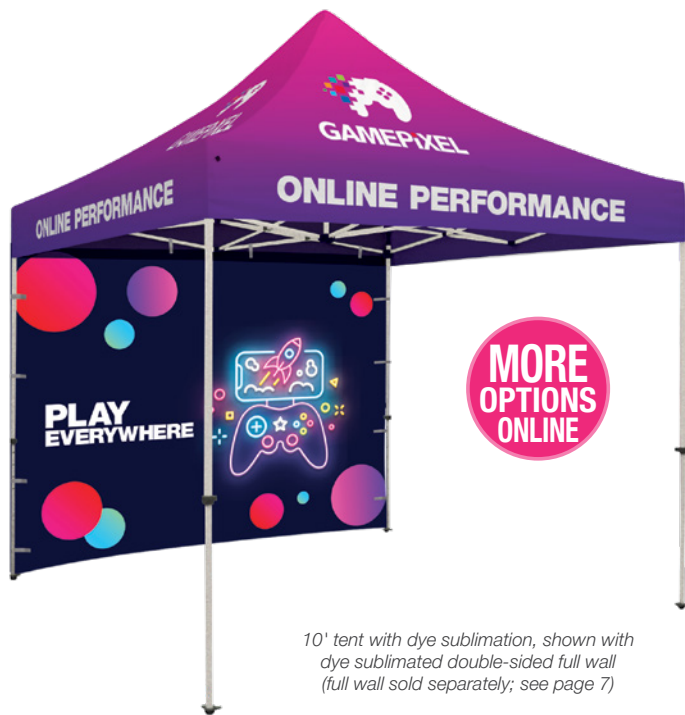


Easy-Glide Tent Feet allow the tent frame to slide on dirt and grass, preventing the legs from catching. US Patent #D760857



Legs feature levers for easy height adjustments.





10' tent with dye sublimation, shown with dye sublimated double-sided full wall (full wall sold separately; see page 7)

Kit Includes:



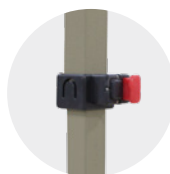
Soft Carry Case with Wheels



Stake Kit



Easy-Glide Tent Feet allow the tent frame to slide on dirt and grass, preventing the legs from catching. US Patent #D760857



Legs feature plastic push buttons for pinch-free height adjustments.



Maintain cleanliness with the Sani-Station Mount (sold separately).

STANDARD 10' TENT

This popular tent strikes a perfect balance between cost effectiveness and portability.

- 1.125"W square legs comprised of 1 mm pebble powder-coated steel frame
- ABS nylon joints
- Crank-up canopy creates a taut, clean peak
- 10' canopy available in eight stock colors (see page 2) or with full-bleed dye sublimation

Standard 10' Tent

Item #	Description	1	2-5	6-11	12-24
240610	Unimprinted Kit	599.00	587.00	575.00	557.00
240611	Full-Color Imprint Kit (1 Location)	688.00	674.00	660.00	640.00
240612	Full-Color Imprint Kit (2 Locations)	777.00	761.00	745.00	723.00
240614	Full-Color Imprint Kit (4 Locations)	955.00	935.00	915.00	889.00
240616	Full-Color Imprint Kit (6 Locations)	1133.00	1109.00	1085.00	1055.00
240618	Full-Color Imprint Kit (8 Locations)	1311.00	1283.00	1255.00	1221.00
240619	Dye Sublimation Kit	1468.00	1440.00	1412.00	1378.00

USD MSRP (C)

Product Size	Imprint Graphic Size	Dye Sub Graphic Size	Product Wt.
118.5"W x 127.5"H x 118.5"D	Peak: 44"W x 24"H; Valance: 60"W x 8"H	View Online Template	51.5 lbs.

Production Lead Time: 4-7 days from final proof approval
Unimprinted kit ships same day when ordered before 2 pm Central



10' tent with full-color imprint (8 locations)

6' & 8' TENTS AVAILABLE ONLINE!

Kit Includes:



Soft Carry Case with Wheels



Stake Kit



Easy-Glide Tent Feet allow the tent frame to slide on dirt and grass, preventing the legs from catching. US Patent #D760857



Legs feature levers for easy height adjustments.



Maintain cleanliness with the Sani-Station Mount (sold separately).

DELUXE 10' TENT

Designed for frequent use, this tent features a stronger, heavier steel frame than that of the Standard.

- 1.25"W square legs comprised of 1 mm pebble powder-coated steel frame
- ABS glass-filled nylon joints
- Crank-up canopy creates a taut, clean peak
- Canopy available in eight stock colors (see page 2) or with full-bleed dye sublimation

Deluxe 10' Tent

Item #	Description	1	2-5	6-11	12-24
240620	Unimprinted Kit	744.00	729.00	714.00	692.00
240621	Full-Color Imprint Kit (1 Location)	833.00	816.00	799.00	775.00
240622	Full-Color Imprint Kit (2 Locations)	922.00	903.00	884.00	858.00
240624	Full-Color Imprint Kit (4 Locations)	1100.00	1077.00	1054.00	1024.00
240626	Full-Color Imprint Kit (6 Locations)	1278.00	1251.00	1224.00	1190.00
240628	Full-Color Imprint Kit (8 Locations)	1456.00	1425.00	1394.00	1356.00
240629	Dye Sublimation Kit	1613.00	1582.00	1551.00	1513.00

USD MSRP (C)

Product Size	Imprint Graphic Size	Dye Sub Graphic Size	Product Wt.
118.5"W x 127.5"H x 118.5"D	Peak: 44"W x 24"H; Valance: 60"W x 8"H	View Online Template	63.5 lbs.

Production Lead Time: 4-7 days from final proof approval
Unimprinted kit ships same day when ordered before 2 pm Central

Prices are subject to change; visit our website for the most current pricing.

Setup fee: \$20.00(G); no setup fee on orders placed via our website. View current graphic templates, assembly videos and instructions on our website.

PREMIUM 10' TENT

This Premium tent features a strong aluminum frame with sturdy hexagon-shaped legs.

- 1.75" diameter hexagon-shaped legs comprised of 0.8 mm anodized aluminum frame
- ABS glass-filled nylon joints
- Crank-up canopy creates a taut, clean peak
- Canopy available in eight stock colors (see page 2) or with full-bleed dye sublimation

Premium 10' Tent

Item #	Description	1	2-5	6-11	12-24
240630	Unimprinted Kit	889.50	871.50	854.00	827.00
240631	Full-Color Imprint Kit (1 Location)	978.50	958.50	939.00	910.00
240632	Full-Color Imprint Kit (2 Locations)	1067.50	1045.50	1024.00	993.00
240634	Full-Color Imprint Kit (4 Locations)	1245.50	1219.50	1194.00	1159.00
240636	Full-Color Imprint Kit (6 Locations)	1423.50	1393.50	1364.00	1325.00
240638	Full-Color Imprint Kit (8 Locations)	1601.50	1567.50	1534.00	1491.00
240639	Dye Sublimation Kit	1758.50	1724.50	1691.00	1648.00
USD MSRP (C)					

Product Size	Imprint Graphic Size	Dye Sub Graphic Size	Product Wt.
118"W x 126.75"H x 139.25"H x 118"D	Peak: 44"W x 24"H; Valance: 60"W x 8"H	View Online Template	52 lbs.

Production Lead Time: 4-7 days from final proof approval
Unimprinted kit ships same day when ordered before 2 pm Central



Maintain cleanliness with the Sani-Station Mount (sold separately).

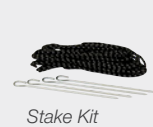


Easy-Glide Tent Feet allow the tent frame to slide on dirt and grass, preventing the legs from catching. US Patent #D760857



Legs feature levers for easy height adjustments.

Kit Includes:



Stake Kit



Soft Carry Case with Wheels

ELITE 10' TENT

Designed to last a lifetime, the Elite tent features our strongest, most robust frame and adds a professional touch to any event.

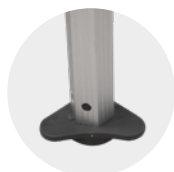
- 2.125" diameter hexagon-shaped legs comprised of 1.55 mm anodized aluminum frame
- Machined aluminum joints
- Self-adjusting spring tension frame creates a taut, clean canopy peak
- Compatible with Tent Sandbag Ballasts; not compatible with Square Plastic Water Weight and Steel Ballast Weight
- Lifetime warranty on frame
- Canopy available in eight stock colors (see page 2) or with full-bleed dye sublimation

Elite 10' Tent

Item #	Description	1	2-5	6-11	12-24
240980	Unimprinted Kit	1470.00	1441.00	1411.00	1367.00
240981	Full-Color Imprint Kit (1 Location)	1559.00	1528.00	1496.00	1450.00
240982	Full-Color Imprint Kit (2 Locations)	1648.00	1615.00	1581.00	1533.00
240984	Full-Color Imprint Kit (4 Locations)	1826.00	1789.00	1751.00	1699.00
240986	Full-Color Imprint Kit (6 Locations)	2004.00	1963.00	1921.00	1865.00
240988	Full-Color Imprint Kit (8 Locations)	2182.00	2137.00	2091.00	2031.00
240989	Dye Sublimation Kit	2339.00	2294.00	2248.00	2188.00
USD MSRP (C)					

Product Size	Imprint Graphic Size	Dye Sub Graphic Size	Product Wt.
118"W x 116.75"H x 128.25"H x 118"D	Peak: 44"W x 24"H; Valance: 60"W x 8"H	View Online Template	78.5 lbs.

Production Lead Time: 4-7 days from final proof approval
Unimprinted kit ships same day when ordered before 2 pm Central

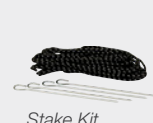


Easy-Glide Tent Feet allow the tent frame to slide on dirt and grass, preventing the legs from catching. US Patent #D760857



Legs feature levers for easy height adjustments.

Kit Includes:



Stake Kit



Soft Carry Case with Wheels

Prices are subject to change; visit our website for the most current pricing.
Setup fee: \$20.00(G); no setup fee on orders placed via our website. View current graphic templates, assembly videos and instructions on our website.



TENT WALLS

With several creative options to choose from, you can customize your tent for a truly unique look.

- 6' and 8' walls available in 400 denier polyester
- 10' and 15' walls available in 400 denier polyester or Titan™ 9 oz. mesh vinyl
- Walls can be applied facing inward or outward
- Single-sided art will be printed on outward facing side unless otherwise requested
- Tent frame and canopy sold separately

Standard Tent Frame Half Wall Kits

Item #	Description	1	2-5	6-11	12-24
240336	10' Half Wall Kit (Unimprinted)	209.30	205.10	200.90	194.60
240339	10' Half Wall Kit (Full-Color Imprint)	326.75	320.25	313.75	304.00
240342	10' Half Wall Kit (Dye Sublimation)	453.75	444.75	435.50	422.00
240375	10' Double-Sided Half Wall Kit (Dye Sublimation)	551.00	540.00	529.00	512.50
240422	10' Mesh Half Wall Kit (Unimprinted)	200.90	196.90	192.90	186.80
240425	10' Mesh Half Wall Kit (Full-Color UV)	313.75	307.50	301.25	291.75

Kit Includes: Half Wall, Stabilizing Bar and 2 Clamps

USD MSRP (C)

Deluxe Tent Frame Half Wall Kits

Item #	Description	1	2-5	6-11	12-24
240854	6' Half Wall Kit (Unimprinted)	166.10	162.80	159.50	154.50
240855	6' Half Wall Kit (Full-Color Imprint)	270.75	265.25	260.00	251.75
240856	6' Half Wall Kit (Dye Sublimation)	399.25	391.25	383.25	371.25
240857	6' Double-Sided Half Wall Kit (Dye Sublimation)	508.50	498.50	488.00	473.00
240884	8' Half Wall Kit (Unimprinted)	177.70	174.10	170.60	165.30
240885	8' Half Wall Kit (Full-Color Imprint)	284.75	279.00	273.25	264.75
240886	8' Half Wall Kit (Dye Sublimation)	411.50	403.25	395.00	382.75
240887	8' Double-Sided Half Wall Kit (Dye Sublimation)	520.50	510.00	499.50	484.00
240337	10' Half Wall Kit (Unimprinted)	209.30	205.10	200.90	194.60
240340	10' Half Wall Kit (Full-Color Imprint)	326.75	320.25	313.75	304.00
240343	10' Half Wall Kit (Dye Sublimation)	453.75	444.75	435.50	422.00
240376	10' Double-Sided Half Wall Kit (Dye Sublimation)	551.00	540.00	529.00	512.50
240423	10' Mesh Half Wall Kit (Unimprinted)	200.90	196.90	192.90	186.80
240426	10' Mesh Half Wall Kit (Full-Color UV)	313.75	307.50	301.25	291.75

Kit Includes: Half Wall, Stabilizing Bar and 2 Clamps

USD MSRP (C)

Premium Tent Frame Half Wall Kits

Item #	Description	1	2-5	6-11	12-24
240338	10' Half Wall Kit (Unimprinted)	209.30	205.10	200.90	194.60
240341	10' Half Wall Kit (Full-Color Imprint)	324.25	317.75	311.25	301.50
240344	10' Half Wall Kit (Dye Sublimation)	453.75	444.75	435.50	422.00
240377	10' Double-Sided Half Wall Kit (Dye Sublimation)	551.00	540.00	529.00	512.50
240424	10' Mesh Half Wall Kit (Unimprinted)	200.90	196.90	192.90	186.80
240427	10' Mesh Half Wall Kit (Full-Color UV)	313.75	307.50	301.25	291.75
240515	15' Half Wall Kit (Unimprinted)	280.75	275.25	269.50	261.00
240516	15' Half Wall Kit (Full-Color Imprint)	453.75	444.75	435.50	422.00
240517	15' Half Wall Kit (Dye Sublimation)	635.50	623.00	610.00	591.00
240518	15' Mesh Half Wall Kit (Unimprinted)	269.50	264.00	258.75	250.75
240519	15' Mesh Half Wall Kit (Full-Color UV)	435.50	426.75	418.00	405.00

Kit Includes: Half Wall, Stabilizing Bar and 2 Clamps

USD MSRP (C)

Elite Tent Frame Half Wall Kits

Item #	Description	1	2-5	6-11	12-24
240564	10' Half Wall Kit (Unimprinted)	209.30	205.10	200.90	194.60
240565	10' Half Wall Kit (Full-Color Imprint)	324.25	317.75	311.25	301.50
240566	10' Half Wall Kit (Dye Sublimation)	453.75	444.75	435.50	422.00
240567	10' Double-Sided Half Wall Kit (Dye Sublimation)	550.50	539.50	528.50	512.00
240568	10' Mesh Half Wall Kit (Unimprinted)	200.90	196.90	192.90	186.80
240569	10' Mesh Half Wall Kit (Full-Color UV)	313.75	307.50	301.25	291.75

Kit Includes: Half Wall, Stabilizing Bar and 2 Clamps

USD MSRP (C)

Description	Product Size	Graphic Size	Dye Sub / UV Graphic Size	Product Wt. (Imprint / Dye Sub / Double-Sided / Mesh)
6'	72"W x 38"H x 2.25"D	50"W x 24"H	View Online Template	4.25 lbs. / 4.75 lbs. / 6.25 lbs. / NA
8'	96"W x 38"H x 2.25"D	50"W x 24"H	View Online Template	5 lbs. / 5.25 lbs. / 7.25 lbs. / NA
10'	Kit: 118"W x 38"H x 2.5"D	54"W x 24"H	View Online Template	4.75 lbs. / 5.25 lbs. / 7.25 lbs. / 5.5 lbs.
10' Elite	Kit: 118.5"W x 38"H x 3"D	54"W x 24"H	View Online Template	4.5 lbs. / 5 lbs. / 7 lbs. / 5.2 lbs.
15'	Kit: 175.5"W x 38"H x 2.5"D	54"W x 24"H (2)	View Online Template	7.2 lbs. / 7.8 lbs. / NA / 8.35 lbs.

Production Lead Time: 2-7 days from final proof approval

Unimprinted kit ships same day when ordered before 2 pm Central



Half Wall Stock Colors

● Black ○ White

15' walls available in white only

10' half wall kit with full-color imprint



10' mesh half wall kit with full-color UV

Prices are subject to change; visit our website for the most current pricing.

Setup fee: \$20.00(G); no setup fee on orders placed via our website. View current graphic templates, assembly videos and instructions on our website.

Full Tent Walls

Item #	Description	1	2-5	6-11	12-24
240910	6' Full Wall (Unimprinted)	152.20	149.20	146.10	141.50
240911	6' Full Wall (Full-Color Imprint)	270.75	265.25	260.00	251.75
240912	6' Full Wall (Dye Sublimation)	593.00	581.00	569.50	551.50
240913	6' Double-Sided Full Wall (Dye Sublimation)	762.50	747.50	732.00	709.00
240918	8' Full Wall (Unimprinted)	166.10	162.80	159.50	154.50
240919	8' Full Wall (Full-Color Imprint)	284.75	279.00	273.25	264.75
240920	8' Full Wall (Dye Sublimation)	605.00	593.00	581.00	562.50
240921	8' Double-Sided Full Wall (Dye Sublimation)	780.50	765.00	749.50	726.00
240082	10' Full Wall (Unimprinted)	196.00	192.10	188.20	182.30
240083	10' Full Wall (Full-Color Imprint)	338.75	332.00	325.25	315.00
240084	10' Full Wall (Dye Sublimation)	653.50	640.50	627.50	608.00
240184	10' Double-Sided Full Wall (Dye Sublimation)	835.00	818.50	801.50	776.50
240432	10' Mesh Full Wall (Unimprinted)	188.20	184.40	180.70	175.00
240433	10' Mesh Full Wall (Full-Color UV)	338.75	332.00	325.25	315.00
240396	15' Full Wall (Unimprinted)	296.50	290.50	284.75	275.75
240397	15' Full Wall (Full-Color Imprint)	520.50	510.00	499.50	484.00
240398	15' Full Wall (Dye Sublimation)	974.00	954.50	935.00	906.00
240348	15' Double-Sided Full Wall (Dye Sublimation)	1271.00	1246.00	1220.00	1182.00
240436	15' Mesh Full Wall (Unimprinted)	284.75	279.00	273.25	264.75
240437	15' Mesh Full Wall (Full-Color UV)	520.50	510.00	499.50	484.00

USD MSRP (C)

Description	Product Size	Graphic Size	Dye Sub / UV Graphic Size	Product Wt. (Imprint / Dye Sub / Double-Sided / Mesh)
6'	71.75"W x 84.5"H	50"W x 30"H	View Online Template	2.5 lbs. / 3 lbs. / 6 lbs. / NA
8'	98.75"W x 84.5"H	50"W x 30"H	View Online Template	3 lbs. / 3.5 lbs. / 7 lbs. / NA
10'	118.25"W x 84.5"H	54"W x 30"H	View Online Template	3.4 lbs. / 4.4 lbs. / 10 lbs. / 4.5 lbs.
15'	176.75"W x 84.5"H	54"W x 30"H (2)	View Online Template	4.5 lbs. / 5.5 lbs. / 12.5 lbs. / 6.5 lbs.

Production Lead Time: 2-7 days from final proof approval

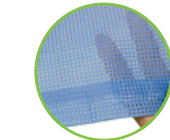
Unimprinted kit ships same day when ordered before 2 pm Central



Heavy-duty double-pull zippers on the sides of full walls let you connect multiple walls together.



Walls attach to a tent frame using hook-and-loop straps.



10' mesh full wall with full-color UV



Full Wall Stock Colors

● Black ○ White

15' walls available in white only

90° Connector Clamp

Item #	Description	1	2-5	6-11	12-24
240192	Standard Frame Connector Clamp	14.40	14.11	13.82	13.39
240193	Deluxe Frame Connector Clamp	14.40	14.11	13.82	13.39
240194	Premium Frame Connector Clamp	14.40	14.11	13.82	13.39

USD MSRP (C)

Hardware Lead Time: Ships same day when ordered before 2 pm Central



Add-On

90° connector clamp connects two stabilizing bars to keep half walls at the same level.



TENT ACCESSORIES

Tent Accessories

Item #	Description	Product Wt.	1	2-5	6-11	12-24
240085	Square Plastic Water Weight*	22 lbs. w/water	52.15	51.10	50.05	48.50
240094	Steel Ballast Weight*	11 lbs.	71.35	69.90	68.50	66.35
240112	Tent Sandbag Ballasts (Set of 4)	20.6 lbs. w/sand	78.40	76.85	75.25	72.90
240015	Tent Stake Kit	1 lb.	41.75	40.92	40.08	38.83
240768	Heavy-Duty Tent Stake Kit	5 lbs.	135.50	132.80	130.10	126.00
220153	10' Compact Tent Soft Case with Wheels	5 lbs.	131.30	128.70	126.00	122.10
220079	10' Tent Soft Case with Wheels	5.8 lbs.	144.00	141.10	138.20	133.90
220080	15' or 20' Tent Soft Case with Wheels	8.2 lbs.	179.10	175.50	171.90	166.60
220150	10' or 15' Tent Hard Case with Wheels	22 lbs.	392.00	384.25	376.25	364.50

USD MSRP (C)

Hardware Lead Time: Ships same day when ordered before 2 pm Central



Square Plastic Water Weight



Steel Ballast Weight



Tent Sandbag Ballast



Heavy-Duty Tent Stake Kit



Tent Stake Kit



Compact Tent Soft Case with Wheels



Soft Case with Wheels

Hard Case with Wheels
(Not recommended for 10' Compact tent frame)

Prices are subject to change; visit our website for the most current pricing.

Setup fee: \$20.00(G); no setup fee on orders placed via our website. View current graphic templates, assembly videos and instructions on our website.



VALUE BAG TOSS GAME

The Value Bag Toss game packs a whole lot of fun into a budget-friendly package.

- Two game boards clasp together into a single unit that can be easily transported using the convenient carry handle
- Game boards are constructed of sturdy nylon polymer
- Detachable legs keep the game boards propped up at an angle
- Artwork is printed on an adhesive-backed media with a textured finish
- 90-day warranty on graphic decals

Value Bag Toss Game

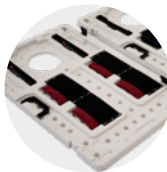
Item #	Description	1	2-5	6-11	12-24
280130	Kit	189.40	185.60	183.70	179.90
Kit Includes: Hardware, 8 Bean Bags and 2 Graphic Decals				USD MSRP (C)	

Product Size	Finished Graphic Size	Product Wt.	Media
Folded: 24.75"W x 3.125"H x 33.375"D (1) Open: 21.5"W x 10.125"H x 33.625"D	View Online Template	15.5 lbs.	Surface Grip

Production Lead Time: 3 days from final proof approval



Removable decals come applied to the game board.



Bean bags can be stored inside elastic pouches so they don't get left behind.



Sliding scorekeeper on the legs counts from 00 to 21.



Spin 'N Win Prize Wheel



Spin 'N Win Prize Wheel Plus

SPIN 'N WIN PRIZE WHEEL & PRIZE WHEEL PLUS

Give your next trade show or event a creative spin.

- Powder-coated steel legs
- A plastic clicker makes a ticking sound as the wheel spins
- Central disc panel attaches magnetically and remains stationary when the wheel spins
- All graphic panels can be custom printed with your design
- Both prize wheels include twelve prize panels and central disc panel
- Prize Wheel Plus includes additional top and bottom graphic panels (US Patent #9981179)

Spin 'N Win Prize Wheels

Item #	Description	1	2-5	6-11	12-24
280104	Spin 'N Win Prize Wheel Kit	684.00	670.50	663.50	650.00
280084	Spin 'N Win Prize Wheel Plus Kit	779.00	763.50	755.50	740.00
Kit Includes: Hardware, Graphic Panels and Soft Carry Case				USD MSRP (C)	

Description	Product Size	Finished Graphic Size	Product Wt.	Graphic Media
Prize Wheel	31.25"W x 40.75"-72"H x 16"-31"D	View Online Template	16.5 lbs.	Titan™ No-Curl Laminated Media
Prize Wheel Plus	Tabletop: 31.75"W x 43.5"H x 16.5"D Floor: 31.75"W x 76"H x 30.5"D	View Online Template	18 lbs.	Styrene

Production Lead Time: 2 days from final proof approval



Prize wheels can be used on tabletops or as a standalone display with the legs extended.



Prize Wheel: Graphic panels and center plate panel can be printed using a desktop printer.



Prize Wheel Plus: Graphic panels feature tabs that slide into grooves for easy installation.

Prices are subject to change; visit our website for the most current pricing.

Setup fee: \$20.00(G); no setup fee on orders placed via our website. View current graphic templates, assembly videos and instructions on our website.

SELFIE FRAME

Photo ops have never been more fun! Selfie frames create real-world opportunities for truly viral social media campaigns.

- Constructed of 4 mm corrugated plastic
- Corrugated plastic is much stronger than cardboard, so the frame won't sag or flop
- Available single-sided only

Selfie Frame

Item #	Description	Product Wt.	1	2-5	6-11	12-24
271130	18"W x 24"H	0.25 lb.	17.43	17.08	16.91	16.56
271131	24"W x 36"H	0.5 lb.	26.26	25.73	25.47	24.95
271132	36"W x 46"H	1 lb.	45.98	45.06	44.60	43.68

USD MSRP (C)

Production Lead Time: 3 days from final proof approval



36" x 46" size is scored in back so it can be folded for shipping, and it features clear tabs to hold it together.



36" x 46"

OUTDOOR EVENT COOLER

Keep drinks cold and your branding hot with this customizable cooler.

- Can be used indoors or outdoors
- Molded insulation keeps contents cold
- Clear lid lets you see what's inside
- Graphic is printed on Titan™ no-curl laminated media
- Holds up to 40 lbs. of ice and 48 standard 12 oz. cans

Outdoor Event Cooler

Item #	Description	1	2-5	6-11	12-24
280240	Kit	490.00	480.25	475.25	465.50

Kit Includes: Hardware and Graphic Wrap

USD MSRP (C)

Product Size	Finished Graphic Size	Product Wt.	Media
22.125"W x 35"H x 25.125"D	View Online Template	24.25 lbs.	Titan™ No-Curl Laminated Media

Production Lead Time: 4 days from final proof approval



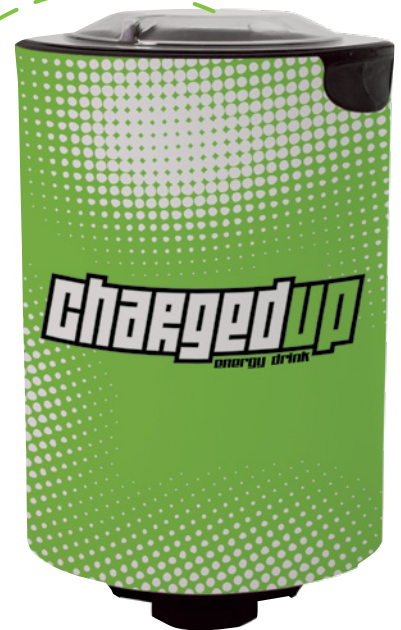
Drain cooler easily with spout located at base.



Two wheels and molded handles for mobility.



Single pivot lid can be opened and closed with one hand.



BACKPACK BANNERS

From stadiums to the streets, these backpack banners let you create advertisements that walk around so you can always be where the action is.

- Comfortable, reinforced straps
- Two styles to choose from

Backpack Banners

Item #	Description	1	2-5	6-11	12-24
190920	Backpack Sail Sign Single-Sided Kit	229.50	223.20	214.30	208.20
190922	Backpack Sail Sign Double-Sided Kit	292.75	285.25	275.75	268.25
190925	Backpack X Banner Single-Sided Kit	203.80	198.00	189.40	183.80

Kit Includes: Hardware, Backpack and Graphic

Description	Product Size	Finished Graphic Size	Product Wt.	Media
Sail Sign	12"W x 72"H x 23"D	View Online Template	2.25 lbs.	Super Poly Knit Fabric
X Banner	19.75"W x 48.75"H x 12.5"D	19.5"W x 47.25"H	3.5 lbs.	Titan™ 13 oz. Smooth Scrim Vinyl

Production Lead Time: 2-4 days from final proof approval



Double-sided flags feature a lightweight block-out polyester for increased flyability.



Poles are inserted into the backpack for quick installation.



Sail Sign

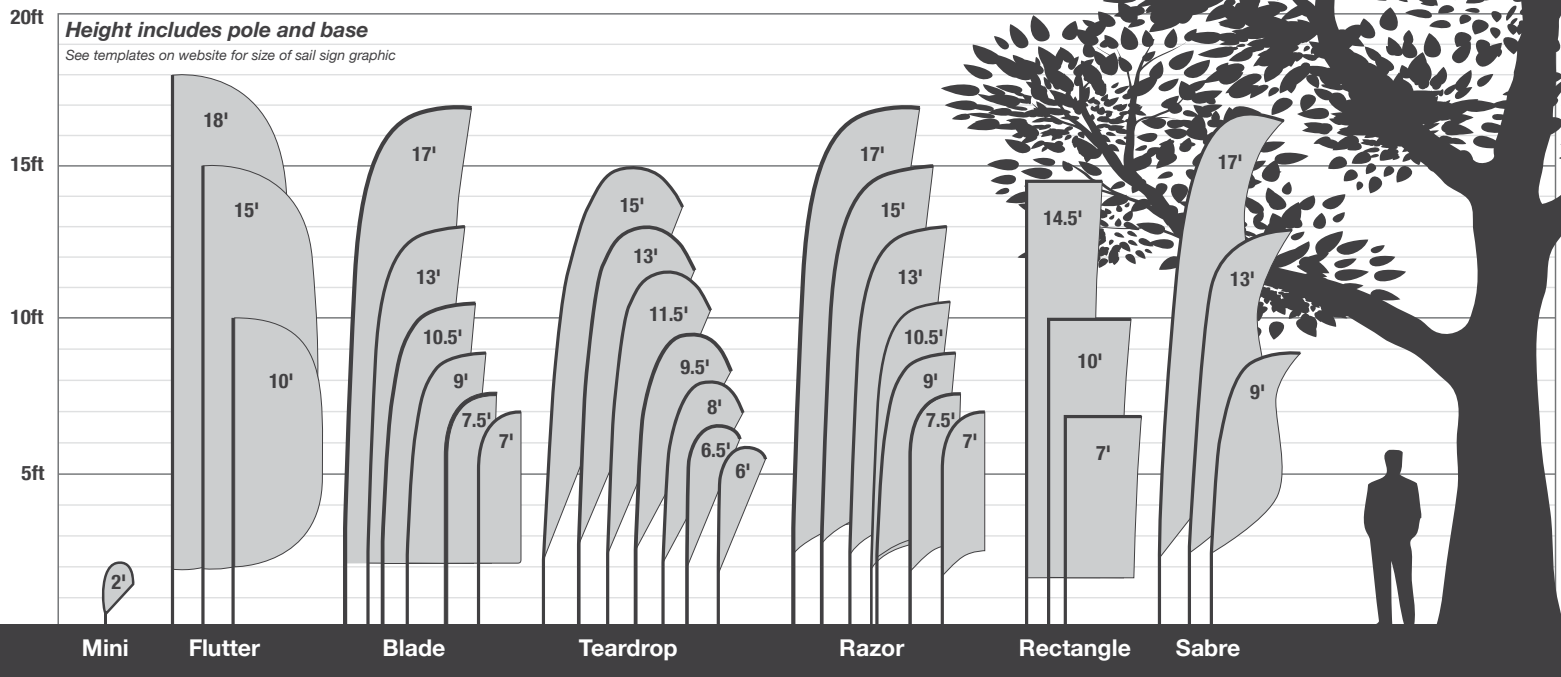


X Banner

SAIL SIGNS

HIGH-IMPACT FLAGS THAT FLUTTER IN THE WIND.

SAIL SIGN HEIGHT COMPARISON CHART



32 Beaufort Wind Rating:
Select products have been rated on the Beaufort Wind Scale. See rating icon underneath the product name. Wind ratings were determined utilizing all available securing/stabilizing options sold with or offered for the product. Review the Beaufort Scale on page 219 for additional details.
Flag Warranty: Flags used outdoors have a 90-day warranty. Flags used indoors have a 1-year warranty.

Disclaimer:
Wind rating conducted in a controlled environment. Outdoor products should be taken down if bad weather is likely. Wind gusts and heavy rain could reduce the wind resistance of these products.

MAXIMIZE THE IMPACT OF YOUR MESSAGE

Single-Sided
Image printed on one side; reverse image shows through back.

Double-Sided
Image printed correct on both sides using a block-out polyester.

Artwork is dye sublimated on super poly knit fabric.

NEW & IMPROVED
DOUBLE-SIDED GRAPHIC

CUSTOMIZE WITH BASE OPTIONS

Kits include spike, cross base with water ballast, or scissor base with water ballast. We also carry several other bases designed to work on various types of terrain; see website.



HARDWARE COMPARISON CHART

	POLE CONSTRUCTION		FLAG ATTACHMENT		CARRY CASE	WIND RATING	HARDWARE WARRANTY
Value Hardware		Channeled carbon composite overlay construction with low-gloss black paint finish. Double-reinforced carbon fiber pole segment ends.		A loop on the flag attaches to an adjustable hook on the pole.	Sold separately		
Premium and Streamline Hardware		Uniform carbon composite overlay construction with high-gloss black paint finish. Polished aluminum collar pole segment ends and ergonomic, rubber-reinforced base grip.		Flag attaches to a fixed hook using a bungee cord.			

Prices are subject to change; visit our website for the most current pricing.
Setup fee: \$20.00(G); no setup fee on orders placed via our website. View current graphic templates, assembly videos and instructions on our website.

VALUE SAIL SIGN

Value sail signs are a high quality budget-minded sail flag solution - perfect for indoor and short term outdoor use.

- Three classic shapes
- Carbon composite poles are strong and flexible
- Artwork is dye sublimated on super poly knit fabric
- 90-day warranty on hardware and flag
- Can be stored and transported in our Value sail sign carry case (sold separately)

MORE
OPTIONS
ONLINE

NEW &
IMPROVED
DOUBLE-SIDED
GRAPHIC

Value Spike Kits Available Online



Single- or Double-Sided



Single-Sided

Image printed on one side; reverse image shows through back.



Double-Sided

Image printed correct on both sides using a block-out polyester.



Value Sail Sign Carry Case
Item #220351. See website for details.



7.5' Blade 10.5' Razor 15' Razor 13' Teardrop 10.5' Blade 6.5' Teardrop

Value Blade Sail Sign

Single-Sided Flag

Description	Item #	1	2-5	6-11	12-24
7.5' Kit with Cross Base and Water Ballast	191731	182.80	177.30	168.10	162.60
10.5' Kit with Cross Base and Water Ballast	191737	207.90	201.60	191.30	185.00
15' Kit with Cross Base and Water Ballast	191743	274.00	265.75	252.00	244.00

Kit Includes: Hardware with Specified Base and Graphic (Does not include carry case)

Double-Sided Flag

Description	Item #	1	2-5	6-11	12-24
7.5' Kit with Cross Base and Water Ballast	191733	275.50	267.25	253.50	245.25
10.5' Kit with Cross Base and Water Ballast	191739	316.25	306.75	291.00	281.50
15' Kit with Cross Base and Water Ballast	191745	413.00	400.75	380.00	367.75

USD MSRP (C)

Value Razor Sail Sign

Single-Sided Flag

Description	Item #	1	2-5	6-11	12-24
7.5' Kit with Cross Base and Water Ballast	191651	182.80	177.30	168.10	162.60
10.5' Kit with Cross Base and Water Ballast	191659	207.90	201.60	191.30	185.00
15' Kit with Cross Base and Water Ballast	191667	274.00	265.75	252.00	244.00

Kit Includes: Hardware with Specified Base and Graphic (Does not include carry case)

Double-Sided Flag

Description	Item #	1	2-5	6-11	12-24
7.5' Kit with Cross Base and Water Ballast	191653	275.25	267.00	253.25	245.00
10.5' Kit with Cross Base and Water Ballast	191661	316.25	306.75	291.00	281.50
15' Kit with Cross Base and Water Ballast	191669	413.00	400.75	380.00	367.75

USD MSRP (C)

Value Teardrop Sail Sign

Single-Sided Flag

Description	Item #	1	2-5	6-11	12-24
6.5' Kit with Cross Base and Water Ballast	191611	182.80	177.30	168.10	162.60
9.5' Kit with Cross Base and Water Ballast	191619	207.90	201.60	191.30	185.00
13' Kit with Cross Base and Water Ballast	191627	274.00	265.75	252.00	244.00

Kit Includes: Hardware with Specified Base and Graphic (Does not include carry case)

Double-Sided Flag

Description	Item #	1	2-5	6-11	12-24
6.5' Kit with Cross Base and Water Ballast	191613	275.25	267.00	253.25	245.00
9.5' Kit with Cross Base and Water Ballast	191621	316.25	306.75	291.00	281.50
13' Kit with Cross Base and Water Ballast	191629	413.00	400.75	380.00	367.75

USD MSRP (C)

Product Size
Sizes Vary

Finished Graphic Size
View Online Template

Production Lead Time: 4 days from final proof approval



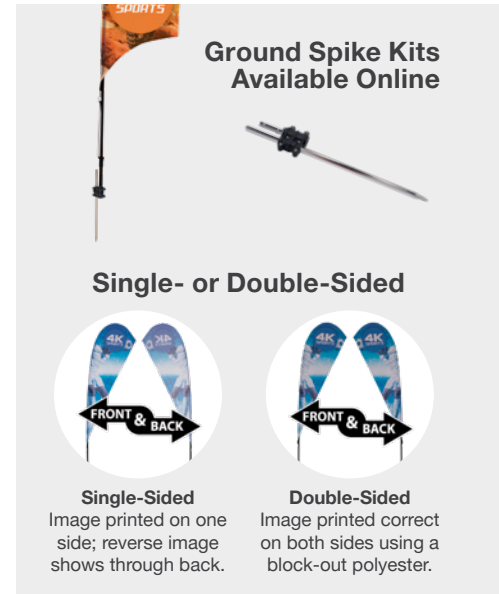
Prices are subject to change; visit our website for the most current pricing.
Setup fee: \$20.00(G); no setup fee on orders placed via our website. View current graphic templates, assembly videos and instructions on our website.



STREAMLINE SAIL SIGN

Streamline sail signs provide the largest artwork surface area with its integrated printed pole pocket.

- Sizes range from 6' to 17' tall
- Carbon composite poles are strong and flexible
- Artwork is dye sublimated on super poly knit fabric
- Flags used outdoors have a 90-day warranty
- Lifetime warranty on pole hardware



Streamline Blade Sail Sign

Streamline Blade Sail Sign		Single-Sided Flag				Double-Sided Flag				
Description	Item #	1	2-5	6-11	12-24	Item #	1	2-5	6-11	12-24
7' Kit with Three-Legged Base and Water Ballast	191491	256.75	249.00	236.25	228.50	191493	354.75	344.00	326.25	315.50
9' Kit with Scissor Base and Water Ballast	191497	324.75	315.00	298.75	289.00	191499	437.75	424.75	402.75	389.75
13' Kit with Scissor Base and Water Ballast	191503	382.50	371.00	352.00	340.50	191505	543.50	527.50	500.00	483.50
17' Kit with Scissor Base and Water Ballast	191509	452.25	438.75	416.00	402.50	191511	655.50	636.00	603.50	583.50
Kit Includes: Hardware with Specified Base, Graphic and Soft Carry Case										USD MSRP (C)

Kit Includes: Hardware with Specified Base, Graphic and Soft Carry Case

USD MSRP (C)

Streamline Razor Sail Sign

Streamline Razor Sail Sign		Single-Sided Flag				Double-Sided Flag				
Description	Item #	1	2-5	6-11	12-24	Item #	1	2-5	6-11	12-24
7' Kit with Three-Legged Base and Water Ballast	191429	256.75	249.00	236.25	228.50	191437	354.75	344.00	326.25	315.50
9' Kit with Scissor Base and Water Ballast	191431	324.75	315.00	298.75	289.00	191439	437.75	424.75	402.75	389.75
13' Kit with Scissor Base and Water Ballast	191433	382.50	371.00	352.00	340.50	191441	543.50	527.50	500.00	483.50
17' Kit with Scissor Base and Water Ballast	191435	452.25	438.75	416.00	402.50	191443	655.50	636.00	603.50	583.50

Kit Includes: Hardware with Specified Base, Graphic and Soft Carry Case

USD MSRP (C)

Streamline Teardrop Sail Sign

Streamline Teardrop Sail Sign		Single-Sided Flag				Double-Sided Flag				
Description	Item #	1	2-5	6-11	12-24	Item #	1	2-5	6-11	12-24
6' Kit with Three-Legged Base and Water Ballast	191401	256.75	249.00	236.25	228.50	191409	354.75	344.00	326.25	315.50
8' Kit with Scissor Base and Water Ballast	191403	324.75	315.00	298.75	289.00	191411	437.75	424.75	402.75	389.75
11.5' Kit with Scissor Base and Water Ballast	191405	382.50	371.00	352.00	340.50	191413	543.50	527.50	500.00	483.50
15' Kit with Scissor Base and Water Ballast	191407	452.25	438.75	416.00	402.50	191415	655.50	636.00	603.50	583.50

Kit Includes: Hardware with Specified Base, Graphic and Soft Carry Case

USD MSRP (C)

Streamline Sabre Sail Sign

Streamline Sabre Sail Sign		Single-Sided Flag				Double-Sided Flag				
Description	Item #	1	2-5	6-11	12-24	Item #	1	2-5	6-11	12-24
9' Kit with Scissor Base and Water Ballast	191445	324.75	315.00	298.75	289.00	191451	437.75	424.75	402.75	389.75
13' Kit with Scissor Base and Water Ballast	191447	382.50	371.00	352.00	340.50	191453	543.50	527.50	500.00	483.50
17' Kit with Scissor Base and Water Ballast	191449	452.25	438.75	416.00	402.50	191455	655.50	636.00	603.50	583.50

Kit Includes: Hardware with Specified Base, Graphic and Soft Carry Case

USD MSRP (C)

Streamline Rectangle Sail Sign

Streamline Rectangle Sail Sign		Single-Sided Flag				Double-Sided Flag				
Description	Item #	1	2-5	6-11	12-24	Item #	1	2-5	6-11	12-24
7' Kit with Scissor Base and Water Ballast	191417	324.75	315.00	298.75	289.00	191423	437.75	424.75	402.75	389.75
10' Kit with Scissor Base and Water Ballast	191419	382.50	371.00	352.00	340.50	191425	543.50	527.50	500.00	483.50
14.5' Kit with Scissor Base and Water Ballast	191421	452.25	438.75	416.00	402.50	191427	655.50	636.00	603.50	583.50

Kit Includes: Hardware with Specified Base, Graphic and Soft Carry Case

USD MSRP (C)

Product Size
Sizes Vary

Finished Graphic Size
View Online Template

Production Lead Time: 2 days from final proof approval



Prices are subject to change; visit our website for the most current pricing.

Setup fee: \$20.00(G); no setup fee on orders placed via our website. View current graphic templates, assembly videos and instructions on our website.

PREMIUM SAIL SIGN

Premium sail signs are reinforced with black pole pockets constructed of high tensile strength elastic polyester binding.

- Sizes range from 6' to 17' tall
- Carbon composite poles are strong and flexible
- Artwork is dye sublimated on super poly knit fabric
- Flags used outdoors have a 90-day warranty
- Lifetime warranty on pole hardware



Ground Spike Kits
Available Online



Single- or Double-Sided



Single-Sided

Image printed on one side; reverse image shows through back.



Double-Sided

Image printed correct on both sides using a block-out polyester.



Premium Blade Sail Sign

Single-Sided Flag

Description	Item #	1	2-5	6-11	12-24
7' Kit with Three-Legged Base and Water Ballast	191516	287.75	279.25	265.00	256.25
9' Kit with Scissor Base and Water Ballast	191522	355.75	345.00	327.25	316.50
13' Kit with Scissor Base and Water Ballast	191528	415.25	402.75	382.00	369.50
17' Kit with Scissor Base and Water Ballast	191534	481.50	467.00	443.00	428.50

Kit Includes: Hardware with Specified Base, Graphic and Soft Carry Case

Double-Sided Flag

Description	Item #	1	2-5	6-11	12-24
7' Kit with Three-Legged Base and Water Ballast	191518	417.75	405.00	384.25	371.75
9' Kit with Scissor Base and Water Ballast	191524	499.75	484.50	459.75	444.50
13' Kit with Scissor Base and Water Ballast	191530	609.00	590.50	560.00	542.00
17' Kit with Scissor Base and Water Ballast	191536	717.00	695.50	660.00	638.50

USD MSRP (C)

Premium Razor Sail Sign

Single-Sided Flag

Description	Item #	1	2-5	6-11	12-24
7' Kit with Three-Legged Base and Water Ballast	190985	287.75	279.25	265.00	256.25
9' Kit with Scissor Base and Water Ballast	190757	355.75	345.00	327.25	316.50
13' Kit with Scissor Base and Water Ballast	190759	415.25	402.75	382.00	369.50
17' Kit with Scissor Base and Water Ballast	190761	481.50	467.00	443.00	428.50

Kit Includes: Hardware with Specified Base, Graphic and Soft Carry Case

Double-Sided Flag

Description	Item #	1	2-5	6-11	12-24
7' Kit with Three-Legged Base and Water Ballast	190984	417.75	405.00	384.25	371.75
9' Kit with Scissor Base and Water Ballast	190756	499.75	484.50	459.75	444.50
13' Kit with Scissor Base and Water Ballast	190758	609.00	590.50	560.00	542.00
17' Kit with Scissor Base and Water Ballast	190760	717.00	695.50	660.00	638.50

USD MSRP (C)

Premium Teardrop Sail Sign

Single-Sided Flag

Description	Item #	1	2-5	6-11	12-24
6' Kit with Three-Legged Base and Water Ballast	190979	287.75	279.25	265.00	256.25
8' Kit with Scissor Base and Water Ballast	190763	355.75	345.00	327.25	316.50
11.5' Kit with Scissor Base and Water Ballast	190765	415.25	402.75	382.00	369.50
15' Kit with Scissor Base and Water Ballast	190767	481.50	467.00	443.00	428.50

Kit Includes: Hardware with Specified Base, Graphic and Soft Carry Case

Double-Sided Flag

Description	Item #	1	2-5	6-11	12-24
6' Kit with Three-Legged Base and Water Ballast	190978	417.75	405.00	384.25	371.75
8' Kit with Scissor Base and Water Ballast	190762	499.75	484.50	459.75	444.50
11.5' Kit with Scissor Base and Water Ballast	190764	609.00	590.50	560.00	542.00
15' Kit with Scissor Base and Water Ballast	190766	717.00	695.50	660.00	638.50

USD MSRP (C)

Premium Sabre Sail Sign

Single-Sided Flag

Description	Item #	1	2-5	6-11	12-24
9' Kit with Scissor Base and Water Ballast	190955	355.75	345.00	327.25	316.50
13' Kit with Scissor Base and Water Ballast	190961	415.25	402.75	382.00	369.50
17' Kit with Scissor Base and Water Ballast	190967	481.50	467.00	443.00	428.50

Kit Includes: Hardware with Specified Base, Graphic and Soft Carry Case

Double-Sided Flag

Description	Item #	1	2-5	6-11	12-24
9' Kit with Scissor Base and Water Ballast	190954	499.75	484.50	459.75	444.50
13' Kit with Scissor Base and Water Ballast	190960	609.00	590.50	560.00	542.00
17' Kit with Scissor Base and Water Ballast	190966	717.00	695.50	660.00	638.50

USD MSRP (C)

Premium Rectangle Sail Sign

Single-Sided Flag

Description	Item #	1	2-5	6-11	12-24
7' Kit with Scissor Base and Water Ballast	190751	355.75	345.00	327.25	316.50
10' Kit with Scissor Base and Water Ballast	190753	415.25	402.75	382.00	369.50
14.5' Kit with Scissor Base and Water Ballast	190755	481.50	467.00	443.00	428.50

Kit Includes: Hardware with Specified Base, Graphic and Soft Carry Case

Double-Sided Flag

Description	Item #	1	2-5	6-11	12-24
7' Kit with Scissor Base and Water Ballast	190750	499.75	484.50	459.75	444.50
10' Kit with Scissor Base and Water Ballast	190752	609.00	590.50	560.00	542.00
14.5' Kit with Scissor Base and Water Ballast	190754	717.00	695.50	660.00	638.50

USD MSRP (C)

Product Size
Sizes Vary

Finished Graphic Size
View Online Template

Production Lead Time: 4 days from final proof approval



11.5' Teardrop

7' Blade

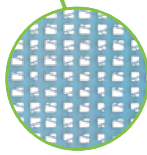
14.5' Rectangle

Prices are subject to change; visit our website for the most current pricing.
Setup fee: \$20.00(G); no setup fee on orders placed via our website. View current graphic templates, assembly videos and instructions on our website.



3' x 6' banner with grommets

**MORE
OPTIONS
ONLINE**



9 OZ. MESH VINYL BANNER

This single-sided banner is made of breathable 60/40 mesh vinyl that excels on breezy days.

9 oz. Mesh Vinyl Banner

Item #	Description	Product Wt.	1	2-4	5-14	15-33
304411	2' x 6'	1.25 lbs.	58.32	53.76	49.20	45.48
Item #	Description	Product Wt.	1	2-3	4-9	10-22
304414	3' x 6'	2 lbs.	87.48	80.64	73.80	68.22
Item #	Description	Product Wt.	1	2-5	6-12	13-24
304417	4' x 8'	3 lbs.	143.36	131.20	121.28	109.76

USD MSRP (C)

Production Lead Time: 2 days from final proof approval



**NEW
PRODUCT**

**MORE
OPTIONS
ONLINE**

9 OZ. PVC-FREE BANNER

An environmentally conscious solution for your banner needs.

- 100% PVC-free material that can be used indoors and outdoors
- Eco-friendly PVC-free material is recyclable, biodegradable and compostable
- Only available with sewn finishing style

PVC-Free Banner

Item #	Description	Product Wt.	1-2	3-7	8-22	23-49
304970	2' x 4'	1 lb.	42.72	39.04	35.12	32.72
Item #	Description	Product Wt.	1	2-3	4-9	10-22
304972	3' x 6'	2 lbs.	96.12	87.84	79.02	73.62
Item #	Description	Product Wt.	1	2-5	6-12	13-24
304975	4' x 8'	3 lbs.	156.16	140.48	130.88	116.80

USD MSRP (C)

Production Lead Time: 2 days from final proof approval



**MORE
OPTIONS
ONLINE**

3' x 8' banner with rope and grommets

10 OZ. SCRIM VINYL BANNER

This single-sided, light-duty banner is perfect for indoor or short-term outdoor use.

10 oz. Scrim Vinyl Banner

Item #	Description	Product Wt.	1-2	3-7	8-22	23-49
304245	2' x 4'	0.5 lb.	32.24	30.24	28.16	26.16
Item #	Description	Product Wt.	1	2-3	4-9	10-22
304252	3' x 6'	1.25 lbs.	72.54	68.04	63.36	58.86
Item #	Description	Product Wt.	1-2	3-7	8-16	17-33
304255	4' x 6'	1.5 lbs.	90.72	84.48	78.48	70.32

USD MSRP (C)

Production Lead Time: 2 days from final proof approval



**MORE
OPTIONS
ONLINE**

3' x 8' banner with grommets

13 OZ. SCRIM VINYL BANNER

Versatile enough for both indoor and outdoor use, this single-sided banner is a top choice when it comes to value.

13 oz. Scrim Vinyl Banner

Item #	Description	Product Wt.	1-2	3-7	8-22	23-49
304360	2' x 4'	1 lb.	34.16	31.20	28.08	26.16
Item #	Description	Product Wt.	1	2-3	4-9	10-22
304364	3' x 6'	2.5 lbs.	76.86	70.20	63.18	58.86
Item #	Description	Product Wt.	1	2-5	6-12	13-24
304367	4' x 8'	4 lbs.	124.80	112.32	104.64	93.44

USD MSRP (C)

Production Lead Time: 2 days from final proof approval

Prices are subject to change; visit our website for the most current pricing.

Setup fee: \$20.00(G); no setup fee on orders placed via our website. View current graphic templates, assembly videos and instructions on our website.

18 OZ. OPAQUE SCRIM VINYL BANNER

This banner is reinforced with scrim, making it extremely durable for outdoor use.

18 oz. Opaque Scrim Vinyl Banner (Double-Sided)

Item #	Description	Product Wt.	1-2	3-7	8-22	23-49
304470	2' x 4'	1 lb.	82.48	77.36	72.00	67.76
Item #	Description	Product Wt.	1	2-3	4-9	10-22
304472	3' x 6'	2.5 lbs.	185.58	174.06	162.00	152.46
Item #	Description	Product Wt.	1	2-5	6-12	13-24
304474	4' x 8'	4 lbs.	309.44	288.00	271.04	250.56

Single-sided banners are available online. USD MSRP (C)

Production Lead Time: 2 days from final proof approval

MORE
OPTIONS
ONLINE



Scrim texture will be subtly visible on the backside of the banner.



3' x 6' banner with grommets

FENCE BANNER

Convert your fence into full-color advertisements with this outdoor fence banner.

- Banner available in mesh fabric (available online) or mesh vinyl
- Attach to fence using rope or zip ties (not included)

9 oz. Mesh Vinyl Fence Banner

Item #	Description	Product Wt.	1	2-5	6-11	12-24
304950	10' x 36"	1.5 lbs.	133.10	122.50	114.50	106.50
304952	20' x 36"	2.75 lbs.	242.00	222.60	208.10	193.60
304953	10' x 60"	2.4 lbs.	220.20	202.60	189.40	176.20
304955	20' x 60"	4.6 lbs.	403.00	370.75	346.50	322.50

USD MSRP (C)

Production Lead Time: 2 days from final proof approval

MORE
OPTIONS
ONLINE



BOULEVARD BANNERS

High-quality banners lend an upscale flair to any street or parking lot.

- Finished with 3" pole pockets on top and bottom
- Bracket system sold separately (available online)
- Banners used outdoors have a 90-day warranty

Vinyl Boulevard Banner (Double-Sided)

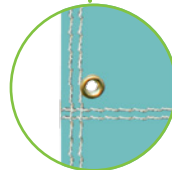
Item #	Description	Product Wt.	1-4	5-13	14-39	40-88
302031	18" x 36"	1.12 lbs.	46.40	43.52	40.50	38.12
Item #	Description	Product Wt.	1-3	4-9	10-29	30-66
302035	24" x 36"	1.5 lbs.	61.86	58.02	54.00	50.82
Item #	Description	Product Wt.	1-2	3-7	8-22	23-49
302037	24" x 48"	2 lbs.	82.48	77.36	72.00	67.76
Item #	Description	Product Wt.	1	2-5	6-17	18-39
302039	24" x 60"	2.5 lbs.	103.10	96.70	90.00	84.70
Item #	Description	Product Wt.	1	2-4	5-14	15-33
302041	24" x 72"	3 lbs.	123.72	116.04	108.00	101.64
Item #	Description	Product Wt.	1	2-4	5-14	15-31
302045	30" x 60"	3.12 lbs.	128.88	120.88	112.50	105.88

Banner only. Hardware sold separately (see website). USD MSRP (C)

Single-sided banners are available online.

Production Lead Time: 2 days from final proof approval

MORE
OPTIONS
ONLINE



Two grommets along one edge of the banner.



2' x 4' banners with pole pockets

POPULAR FINISHING STYLES

Additional finishing styles available online.

Heat Weld

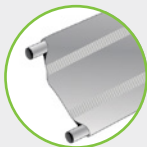
Single-sided vinyl banners only



HEM & GROMMETS



HEM, ROPE & GROMMETS



3" POLE POCKETS

Sewn

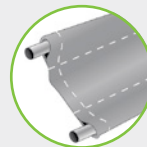
Fabric and double-sided vinyl banners



HEM ONLY



HEM & GROMMETS



3" POLE POCKETS

BUILD
YOUR OWN
CUSTOM SIZES, FINISHING
AND QUOTES



Prices are subject to change; visit our website for the most current pricing.
Setup fee: \$20.00(G); no setup fee on orders placed via our website. View current graphic templates, assembly videos and instructions on our website.



MORE
SIZES, STYLES
& SHAPES
ONLINE



BUILD
YOUR OWN
CUSTOM SIZES, FINISHING
AND QUOTES

BUILD YOUR OWN CUSTOM FLAGS

WITH OUR QUICK & EASY ONLINE TOOL

Visit our website for accurate quotes
and hassle-free ordering 24/7!

Under the Banners & Flags tab, click the Build Your Own Flags option.

NYLON FLAG

Lightweight and fade-resistant, our nylon flags come in a variety of shapes and sizes and are perfect for indoor and outdoor use.

- Constructed of 200 denier nylon
- Standard finishing includes canvas header and brass grommets
- Four rows of lock-stitching provide extra reinforcement on the fly end of rectangular flags
- Single- and double-sided options available
- Flags that are 8' x 12' and larger contain lap seams
- Flags used outdoors have a 90-day warranty

Rectangle Nylon Flag (Single-Sided)

Item #	Description	Product Wt.	1	2-5	6-11	12-24
304531	12" X 18"	0.25 lb.	48.40	43.56	39.69	36.30
304533	2' X 3'	0.3 lb.	60.50	54.45	49.60	45.40
304535	3' X 5'	0.5 lb.	96.80	87.10	79.40	72.60
304536	4' X 6'	0.7 lb.	133.10	119.80	109.10	99.80
304538	6' X 10'	1.6 lbs.	278.25	250.50	228.25	208.75
304539	8' X 12'	2.9 lbs.	472.00	424.75	387.00	354.00
304540	10' X 15'	4.6 lbs.	786.50	708.00	645.00	590.00
304542	15' X 25'	13.25 lbs.	1694.00	1525.00	1389.00	1271.00
304543	20' X 30'	21 lbs.	3025.00	2723.00	2481.00	2269.00
304545	25' X 40'	35 lbs.	4598.00	4138.00	3770.00	3449.00
304547	30' X 60'	63 lbs.	7865.00	7080.00	6450.00	5900.00

USD MSRP (C)

Production Lead Time: 4 days from final proof approval

Single-Sided



Single-sided flags are printed on one side; reverse image shows through the back.

Double-Sided



Double-sided flags have the image printed correct on both sides with a block-out polyester.

UNITED STATES FLAG

Let your patriotism fly high with these beautifully constructed durable flags.

- Flags are constructed of the finest nylon or special woven two-ply polyester
- Dyed with UV protected fade-resistant inks for longer-lasting colors with seamless transitions
- Flags feature hand-sewn stripes for an authentic high-quality flag
- Superior wearing quality dries quickly and stands up to the elements
- Flags used outdoors have a 90-day warranty

United States Nylon Flag

Item #	Description	Product Wt.	1
48402	2' x 3'	0.3 lb.	19.97
48403	3' x 5'	0.6 lb.	25.71
48404	4' x 6'	0.85 lb.	42.05
48405	5' x 8'	1.3 lbs.	63.55
48408	8' x 12'	3.1 lbs.	181.50
48410	10' x 15'	5.3 lbs.	264.10

USD MSRP (C)

United States Polyester Flag

Item #	Description	Product Wt.	1
48803	3' x 5'	1 lb.	37.81
48804	4' x 6'	1.5 lbs.	52.64
48805	5' x 8'	2.2 lbs.	82.90
48806	6' x 10'	3.3 lbs.	125.20
48808	8' x 12'	5.3 lbs.	209.90
48815	15' x 25'	19.7 lbs.	786.50

USD MSRP (C)

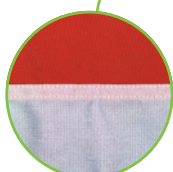
Lead Time: Ships same day when ordered before 2 pm Central



MORE
SIZES
ONLINE



Flags feature full white embroidered stars, no gaps.



Flags utilize a quarter-inch turn-in on all seams to reduce fraying.

Prices are subject to change; visit our website for the most current pricing.

Setup fee: \$20.00(G); no setup fee on orders placed via our website. View current graphic templates, assembly videos and instructions on our website.

FABRIC FLAG

Easy to hang, this flag works with any standard flagpole.

- Best for outdoor use
- Single- and double-sided options available
- Artwork is dye sublimated on super poly knit fabric
- Flags used outdoors have a 90-day warranty

Fabric Flag

Item #	Description	Product Wt.	1	2-5	6-11	12-24
300003	2' x 3' Flag Single-Sided	0.25 lb.	60.50	54.45	49.60	45.40
300007	3' x 5' Flag Single-Sided	0.5 lb.	96.80	87.10	79.40	72.60
300011	4' x 6' Flag Single-Sided	1 lb.	133.10	119.80	109.10	99.80
300015	5' x 8' Flag Single-Sided	1 lb.	179.10	161.20	146.90	134.30
300071	6' x 10' Flag Single-Sided	1.25 lbs.	278.50	250.75	228.25	209.00

USD MSRP (C)

Production Lead Time: 4 days from final proof approval



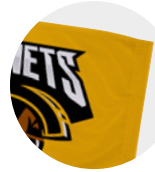
Single-sided flags are printed on one side; reverse image shows through the back.

MORE
OPTIONS
ONLINE

NEW &
IMPROVED
DOUBLE-SIDED
GRAPHIC



BUILD
YOUR OWN
CUSTOM SIZES, FINISHING
AND QUOTES



Double-sided flags feature a lightweight block-out polyester for increased flyability.



Multiple finishing styles available (see website).

INSTA-FLAG POLE

Instantly display a flag at your next outdoor event with this quick and easy flagpole.

- Great for temporary pop-up events
- Kit contains two clips to attach a grommated flag to the pole
- Compatible with flags up to 3' x 5' (flag sold separately)
- Available in 10', 15' and 18' poles with a spike or vehicle base option

Insta-Flag Pole

Item #	Description	1	2-5	6-11	12-24
190630	10' with Ground Spike Kit	144.00	138.80	133.40	127.20
190631	10' with Vehicle Base Kit	171.30	165.30	158.60	151.60
190632	15' with Ground Spike Kit	156.10	150.40	144.70	137.90
190633	15' with Vehicle Base Kit	183.40	176.90	169.80	162.20
190634	18' with Ground Spike Kit	168.20	162.10	156.00	148.60
190635	18' with Vehicle Base Kit	195.60	188.60	181.10	173.00

Kit Includes: Hardware, 2 Flag Hooks, Ground or Vehicle Base and Soft Carry Case (Flag Sold Separately) USD MSRP (C)

Lead Time: Ships same day when ordered before 2 pm Central



Carbon composite overlay construction with high-gloss black paint finish.



Included clips attach to the pole to display a flag.

NEW
PRODUCT



PENNANT STRING

Dress up your balconies, decks, windows, and parade floats with these festive pennants.

- Single-sided pennants are printed on Titan™ 13 oz. scrim vinyl; double-sided pennants are printed on Titan™ 18 oz. opaque scrim vinyl
- Pennants are 9" x 12"; 20' strings feature 11 pennants, 30' strings feature 16 pennants
- Pennants used outdoors have a 90-day warranty

Pennant String

Item #	Description	Product Wt.	1	2-5	6-11	12-24
304770	20' Single-Sided	0.6 lb.	110.10	101.30	94.70	88.10
304771	30' Single-Sided	0.8 lb.	160.90	148.00	138.40	128.70
304772	20' Double-Sided	0.8 lb.	176.70	162.60	152.00	141.40
304773	30' Double-Sided	1 lb.	257.75	237.25	221.75	206.25

USD MSRP (C)

Production Lead Time: 4 days from final proof approval



Prices are subject to change; visit our website for the most current pricing.

Setup fee: \$20.00(G); no setup fee on orders placed via our website. View current graphic templates, assembly videos and instructions on our website.



Flex Sign



Flex Sign with Ballast Base

OUTDOOR FLEX SIGN

This spring-mounted sign is built to withstand the elements.

- Each graphic is protected behind a sheet of clear, non-glare acrylic
- Graphics are printed single-sided; two graphics included in kit
- Base holds 4.5 gallons of water; weighs 63 lbs. when filled
- Tool-free assembly

Outdoor Flex Sign

Item #	Description	1	2-5	6-11	12-24
210127	Flex Sign Kit	435.75	422.75	405.25	392.25
263006	Flex Sign with Ballast Base Kit	478.00	463.75	444.50	430.25

Kit Includes: Hardware, 2 Protective Acrylic Sheets and 2 Single-Sided Graphics USD MSRP (C)

Description	Product Size	Finished Graphic Size	Product Wt.	Media
Flex Sign	25.5"W x 44"H x 29"D	23.4375"W x 33.125"H	27 lbs.	Titan™ 10 oz. Scrim Vinyl
Flex Sign w/Ballast Base	31"W x 46"H x 20"D	23.4375"W x 33.125"H	26 lbs.	Titan™ 10 oz. Scrim Vinyl

Production Lead Time: 2 days from final proof approval



Spring-mounted base allows sign to gently flex in the wind.



Wheels on the ballast base make it easy to move.



Tension corner springs keep the banner centered and taut.



Artwork is dye sublimated on mesh fabric.

FRAMEWORX FLEX

Our popular FrameWorX display has been fitted with a mesh fabric banner and ballast to be used outdoors.

- Designed for short-term outdoor use
- Banner features clear plastic grommets
- Wheels on the base make it easy to move
- Base holds 8 gallons of water; weighs 76.6 lbs. when filled
- Tool-free assembly
- Banners used outdoors have a 90-day warranty

FrameWorX Flex

Item #	Description	1	2-5	6-11	12-24
210342	Single-Banner Kit	606.50	582.00	564.00	533.50
210343	Double-Banner Kit	759.00	741.50	701.50	679.50

Kit Includes: Hardware, Single-Sided Graphic(s) and Soft Carry Case USD MSRP (C)

Product Size	Finished Graphic Size	Product Wt. (Single / Double)	Media
41.25"W x 98.875"H x 21.5"D	View Online Template	27 lbs. / 27.5 lbs.	Mesh Fabric

Production Lead Time: 4 days from final proof approval

ROVER PORTABLE SIGN POST

The best addition to your curbside or parking lot directs your customers where they need to be.

- Artwork is printed on aluminum composite
- Square post attaches flush to sign
- Sign is printed single-sided; double-sided kits include two signs
- 60" base can be filled with 60-80 lbs. w silica sand for additional stability; 72" base can be filled with 150-180 lbs.
- Wrench needed for assembly (not included)

Rover Portable Sign Post

Item #	Description	1	2-5	6-11	12-24
264500	60" Single-Sided Kit	225.10	216.50	207.80	201.00
264501	60" Double-Sided Kit	259.25	251.75	239.75	234.00
264505	72" Single-Sided Kit	290.50	279.25	268.00	259.25
264506	72" Double-Sided Kit	330.25	320.25	305.25	298.00

Single-Sided Kit Includes: Hardware and Single-Sided Graphic Double-Sided Kit Includes: Hardware and 2 Single-Sided Graphics USD MSRP (C)

Description	Product Size	Finished Graphic Size	Product Wt. (Single / Double)	Media
60"	18.2"W x 63.7"H x 19.5"D	View Online Template	11.4 lbs. / 12.4 lbs.	Aluminum Composite
72"	23.35"W x 77"H x 25.5"D	View Online Template	16 lbs. / 18 lbs.	Aluminum Composite

Production Lead Time: 3 days from final proof approval



Relocate sign easily with durable wheeled plastic base.



Secure base and sign(s) with included hardware.



Strong plastic post is reinforced with center cross bars.

72" double-sided kit

60" single-sided kit

Prices are subject to change; visit our website for the most current pricing.

Setup fee: \$20.00(G); no setup fee on orders placed via our website. View current graphic templates, assembly videos and instructions on our website.

A-FRAMES

With multiple sizes to choose from, these A-frames fit a variety of spaces.

- Maintenance-free and weather-resistant
- Folds flat for transport or storage



Chalkboard lets you display personalized, hand-written messages (chalk markers recommended; not included).



Simpo Sign II

Signicade Deluxe



Signicade Deluxe Chalkboard



Coro A-frame (Set of 2)

Simpo Sign II A-Frame

Item #	Description	1	2-5	6-11	12-24
210091	Single-Sided Kit	220.90	214.10	204.20	199.10
271049	Single-Sided Signboard Only (1)	26.26	25.47	24.68	23.90
210092	Double-Sided Kit	236.90	230.10	219.20	214.10
271050	Double-Sided Signboard Only (1)	34.49	33.46	32.42	31.39

Kit Includes: Hardware and 2 Single- or Double-Sided Graphics

USD MSRP (C)

Product Size	Finished Graphic Size	Product Wt.	Media
24"W x 36.75"H x 21.5"D	22"W x 28"H	10.5 lbs.	4 mm Corrugated Plastic

Frame Color ☐ White

Production Lead Time: 2 days from final proof approval

Signicade Deluxe A-Frame

Item #	Description	1	2-5	6-11	12-24
210121	Single-Sided Kit	228.80	221.70	211.50	206.10
271072	Single-Sided Signboard Only (1)	26.26	25.47	24.68	23.90
210122	Double-Sided Kit	244.80	237.70	226.50	221.10
271073	Double-Sided Signboard Only (1)	34.49	33.46	32.42	31.39
210280	Chalkboard* Kit	289.50	282.50	267.00	261.75
271098	Chalkboard* Only (1)	58.10	55.80	53.45	51.70

Kit Includes: Black or White Hardware and 2 Single- or Double-Sided Graphics

USD MSRP (C)

Product Size	Finished Graphic Size	Product Wt. (Coro / Chalkboard)	Media
27"W x 38.5"H x 19"D	24"W x 36"H	21 lbs. / 25 lbs.	4 mm Corrugated Plastic Chalkboard Laminated Rigid PVC Board

Frame Colors ☒ Black ☐ White

Production Lead Time: 2 days from final proof approval

Lead Time: Ships same day when ordered before 2 pm Central

Coro A-Frame

Item #	Description	1	2-5	6-11	12-24
271125	Kit	90.75	88.05	85.30	82.60

Kit Includes: 2 A-frame Signs

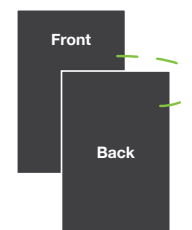
USD MSRP (C)

Product Size	Finished Graphic Size	Product Wt.	Media
22"W x 35.5"H x 12"D	22"W x 36"H	4lbs.	4 mm Corrugated Plastic

Production Lead Time: 2 days from final proof approval

One Signboard, Two Sides.

Double-sided signboards have your artwork printed on both sides, making each signboard reversible.



Double-sided signboards available for Simpo Sign II and Signicade Deluxe

Simpo Sign II and Signicade Deluxe Features & Benefits



Plastic base won't rust, making it great for outdoor use.



Convenient molded handle makes it easy to move.



Frames can be filled with water or sand for stability. (Sand only for Simpo II)



Signboards are easy to swap out to accommodate frequent message changes.

Prices are subject to change; visit our website for the most current pricing.
Setup fee: \$20.00(G); no setup fee on orders placed via our website. View current graphic templates, assembly videos and instructions on our website.



ARCH A-FRAME

Gear up your outdoor events with this lightweight and portable A-frame display.

- Artwork is dye sublimated on polyester knit
- Different artwork can be used on each side
- Four ground stakes included to secure the display
- Display can be disassembled to fit into the included carry case
- Graphic covers used outdoors have a 90-day warranty

Arch A-Frame

Item #	Description	1	2-5	6-11	12-24
210325	Kit	248.00	239.80	231.70	224.20
Kit Includes: Hardware, 4 Stakes, 2 Single-Sided Graphic Covers and Soft Carry Case		USD MSRP (C)			

Product Size	Finished Graphic Size	Product Wt.
79.5"W x 30"H x 13.5"D	77"W x 26"H	3.6 lbs.

Production Lead Time: 4 days from final proof approval



Twists down to a 34" diameter circle that fits neatly into the included carry case.



TWIST-UP OVAL A-FRAME

This display twists in on itself, collapsing into a highly compacted, extremely portable unit.

- Artwork is dye sublimated on polyester knit
- Different artwork can be used on each side
- Four ground stakes included to secure the display
- The carry case features a pouch for the ground stakes
- Graphic covers used outdoors have a 90-day warranty

Twist-Up Oval A-Frame

Item #	Description	1	2-5	6-11	12-24
210318	Kit	387.25	375.75	360.25	348.50
Kit Includes: Hardware, 4 Stakes, 2 Single-Sided Graphic Covers and Soft Carry Case		USD MSRP (C)			

Product Size	Finished Graphic Size	Product Wt.
80.25"W x 33.5"H x 23"D	View Online Template	8.25 lbs.

Production Lead Time: 5 days from final proof approval



SUNRISE SIGNS

Our popular Sunrise Lawn Sign has expanded to the Sunrise Multisurface Sign and now can be displayed at any event!

- Artwork is dye sublimated on super poly knit fabric
- Flexible fiberglass poles can be used with both banner size options
- Banners have a 90-day warranty

Sunrise Lawn Sign

Item #	Description	1	2-5	6-11	12-24
263340	5'W x 4'H Single-Sided Kit	127.10	122.80	118.60	114.80
263341	5'W x 4'H Double-Sided Kit	199.70	193.30	186.90	180.80
263345	3'W x 5'H Single-Sided Kit	115.00	111.10	107.20	103.70
263346	3'W x 5'H Double-Sided Kit	175.50	169.80	164.10	158.80
Kit Includes: Hardware, Single- or Double-Sided Graphic and 2 Stakes		USD MSRP (C)			

Description	Product Size	Finished Graphic Size	Product Wt.
5'W x 4'H	59.5"W x 48"H x 1.625"D	View Online Template	2.3 lbs.
3'W x 5'H	31.25"W x 56.625"H x 1.625"D	View Online Template	2.1 lbs.

Sunrise Multisurface Sign

Item #	Description	1	2-5	6-11	12-24
907070	5'W x 4'H Single-Sided Kit	302.50	291.25	280.00	271.00
907071	5'W x 4'H Double-Sided Kit	375.25	361.75	348.25	337.00
907072	3'W x 5'H Single-Sided Kit	290.50	279.50	268.75	260.00
907073	3'W x 5'H Double-Sided Kit	351.00	338.25	325.50	315.00
Kit Includes: Pole Hardware, Single- or Double-Sided Graphic, Boardwalk Base, 2 Stakes and 2 Square Water Ballasts		USD MSRP (C)			

Description	Product Size	Finished Graphic Size	Product Wt. (Single / Double)
5'W x 4'H	62.25"W x 48"H x 2.85"D	View Online Template	13.7 lbs. / 14 lbs.
3'W x 5'H	40.125"W x 56.625"H x 2.85"D	View Online Template	13.5 lbs. / 13.8 lbs.

Production Lead Time: 4 days from final proof approval



Double-sided banners feature a lightweight block-out polyester.



Prices are subject to change; visit our website for the most current pricing.

Setup fee: \$20.00(G); no setup fee on orders placed via our website. View current graphic templates, assembly videos and instructions on our website.

CORRUGATED PLASTIC SIGN

Great for use on lawns, this sign gives you a simple, inexpensive way to get your message noticed.

- Constructed of 4 mm corrugated plastic
- Full-color artwork can be printed on one or both sides
- Custom sizes and shapes available (call for quote; restrictions may apply)
- Corrugated plastic can be recycled after use

Corrugated Plastic Sign

Item #	Description	1	2-5	6-11	12-24
271110	36"W x 24"H - Single-Sided	26.26	25.47	24.68	23.90
271111	36"W x 24"H - Double-Sided	34.49	33.46	32.42	31.39
271113	24"W x 18"H - Single-Sided	17.43	16.91	16.38	15.86
271114	24"W x 18"H - Double-Sided	22.75	22.07	21.39	20.70

USD MSRP (C)

Corrugated Plastic Sign Kit

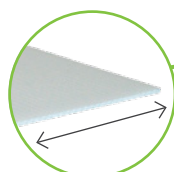
Item #	Description	1	2-5	6-11	12-24
271134	36"W x 24"H - Single-Sided Kit	28.94	28.15	27.36	26.53
271135	36"W x 24"H - Double-Sided Kit	37.17	36.14	35.10	34.02
271137	24"W x 18"H - Single-Sided Kit	20.11	19.59	19.06	18.49
271138	24"W x 18"H - Double-Sided Kit	25.43	24.75	24.07	23.33

Kit Includes: Standard Step Stake and Single- or Double-Sided Graphic

Production Lead Time: 2 days from final proof approval

MORE
OPTIONS
ONLINE

NEW
KITS
AVAILABLE



Stakes slide into fluted openings along the width of the signboard.



CUSTOM
SHAPES
CALL YOUR REP
FOR DETAILS



Custom shapes available in four sizes of 4 mm corrugated plastic. Call your rep for more details. Step stake sold separately.

Standard Step Stake

Item #	Description	1-10	11-20	21-30	31+
381501	Standard Step Stake	2.68	2.63	2.55	2.49

USD MSRP (C)

Hardware Lead Time: Ships same day when ordered before 2 pm Central

BARRICADE COVER

Transform your event barricade into a prime advertising opportunity.

- Covers the full barricade (barricade not included)
- Maximize your impact by featuring a different design on each side
- Available in two-way stretch fabric or Titan™ 18 oz. opaque scrim vinyl
- Barricade Covers used outdoors have a 90-day warranty

Barricade Cover

Item #	Description	Product Wt.	1	2-5	6-11	12-24
302090	3' x 7' Two-Way Stretch Fabric Cover	1.8 lbs.	302.50	293.50	284.25	275.25
302091	3' x 7' 18 oz. Opaque Scrim Vinyl Cover	3.8 lbs.	289.25	280.50	272.00	263.25
302092	3' x 8' Two-Way Stretch Fabric Cover	2.2 lbs.	314.50	305.00	295.75	286.25
302093	3' x 8' 18 oz. Opaque Scrim Vinyl Cover	4.4 lbs.	302.50	293.50	284.25	275.25
302094	3' x 10' Two-Way Stretch Fabric Cover	2.8 lbs.	329.25	319.25	309.50	299.50
302095	3' x 10' 18 oz. Opaque Scrim Vinyl Cover	5.4 lbs.	314.50	305.00	295.75	286.25

USD MSRP (C)

Production Lead Time: 3 days from final proof approval



3' x 8'

OUTDOOR SURFACE TAC

Designed for walkable and drivable surfaces, Surface Tac is perfect for outdoor use.

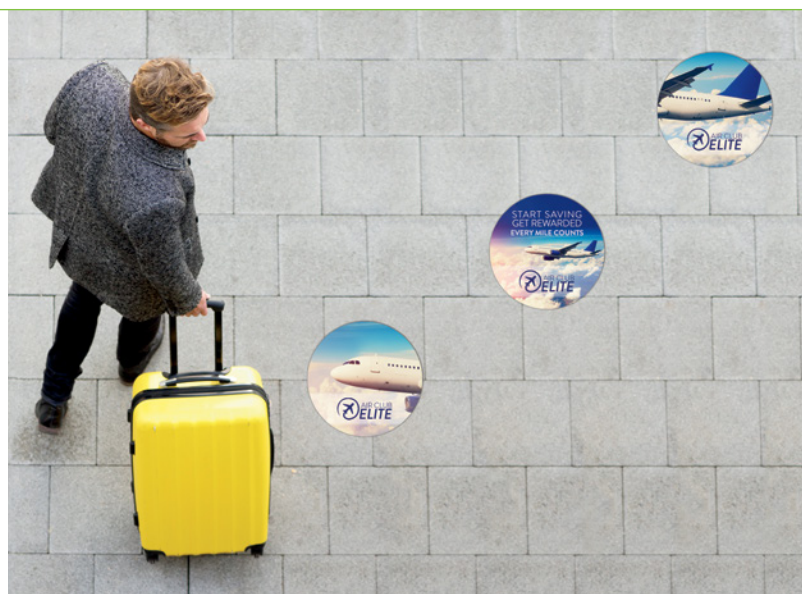
- Recyclable, aluminum foil-based commercial media
- Rounded corners for a finished look
- Certified slip resistant (UL410)
- Different artwork can be applied to each circle
- Custom sizes and shapes available (call for quote; restrictions may apply)

Outdoor Surface Tac

Item #	Description	Product Wt.	1	2-5	6-11	12-24
259092	12" Circle (Set of 3)	0.4 lb.	78.65	76.30	73.95	71.55
259093	12" Circle (Set of 6)	0.8 lb.	152.40	147.80	143.30	138.70
259094	18" Circle (Set of 6)	1 lb.	278.25	270.00	261.50	253.25
259074	72" x 42" Arrow	1.2 lbs.	387.25	375.75	364.00	352.50


USD MSRP (C)

Production Lead Time: 3 days from final proof approval




Prices are subject to change; visit our website for the most current pricing.


Setup fee: \$20.00(G); no setup fee on orders placed via our website. View current graphic templates, assembly videos and instructions on our website.



Shown with an expansion kit



Increase your ad space by adding an expansion kit.



Single-sided kit

**MORE
OPTIONS
ONLINE**

PERFORMER BANNER DISPLAY

This heavy-duty display provides a flexible solution for outdoor advertising at festivals and events.

- Large feet and included stakes keep it stable, even on windy days
- Adjustable frame hardware is compatible with custom banner heights (call for quote; restrictions may apply)
- Banners used outdoors have a 90-day warranty

Performer Banner Display

Item #	Description	1	2-5	6-11	12-24
263287	Single-Sided Kit	817.00	784.50	760.00	719.00
263289	Single-Sided Expansion Kit	629.00	604.00	585.00	553.50
Kit Includes: Hardware, Graphic, 4 Stakes and Soft Carry Case with Wheels				USD MSRP (C)	
Description	Product Size	Finished Graphic Size			
Performer	47"W x 91"H x 39.5"D	39.5"W x 82.25"H			
Expansion	47"W x 91"H x 39.5"D	39.5"W x 82.25"H			

Production Lead Time: 4 days from final proof approval



Thumbscrews on the frame make it easy to set up and adjust.



Banner rail slides into notches in the frame's hubs.



**MORE
OPTIONS
ONLINE**

HEADLINER BANNER DISPLAY

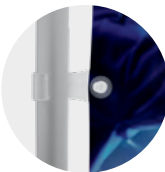
This enormous banner display is great for use in parking lots or at outdoor events.

- Includes four heavy-duty black stakes
- Adjustable frame hardware is compatible with custom banner heights and widths (call for quote; restrictions may apply)
- Banners used outdoors have a 90-day warranty


Headliner Banner Display

Item #	Description	1	2-5	6-11	12-24
263400	Single-Sided Kit	1513.00	1452.00	1407.00	1331.00
Kit Includes: Hardware, Graphic, 4 Stakes and Soft Carry Case with Wheels				USD MSRP (C)	
Product Size		Finished Graphic Size			
129.75"W x 85.25"H x 39.5"D		119"W x 76.5"H			

Production Lead Time: 4 days from final proof approval



C-clips attach to clear grommets along the side of the banner to keep it secure.



Heavy-duty steel foot features a handle so it's easy to position during setup.



Headliner Quad Face Cutout Kit

OUTDOOR FACE CUTOUT

Go viral! The Performer and Headliner Face Cutout banner displays let your guests take their event photoshoots to the next level.

- Artwork is printed on Titan™ 18 oz. opaque scrim vinyl
- Banners are printed single-sided
- Face cutout hole locations are standard and cannot be customized
- Banners used outdoors have a 90-day warranty

Outdoor Face Cutout

Item #	Description	1	2-5	6-11	12-24
263270	Performer Double Face Cutout Kit	817.00	784.50	760.00	719.00
263272	Headliner Quad Face Cutout Kit	1513.00	1452.00	1407.00	1331.00
Kit Includes: Hardware, Graphic, 4 Stakes and Soft Carry Case with Wheels				USD MSRP (C)	
Description	Product Size	Finished Graphic Size	Product Wt.	Media	
Performer	49.75"W x 91"H x 39.5"D	View Online Template	50.25 lbs.	Titan™ 18 oz. Opaque Scrim Vinyl	
Headliner	129.75"W x 85.25"H x 39.5"D	View Online Template	60 lbs.	Titan™ 18 oz. Opaque Scrim Vinyl	

Production Lead Time: 2 days from final proof approval

RETRACTABLE BANNERS & TABLE COVERS

ELEMENT RETRACTOR

Hidden between this retractor's banners is a sturdy ballast that utilizes water or sand to keep the display stable for outdoor use.

- Artwork is printed on Titan™ 13 oz. scrim vinyl
- Kit includes two single-sided banners
- Ballast holds up to 2.6 gallons of water
- Banners used outdoors have a 90-day warranty

Element Retractor

Item #	Description	1	2-5	6-11	12-24
261270	Kit	577.00	542.50	519.50	484.50
Kit Includes: Hardware, 2 Installed Graphics, 4 Stakes and Soft Carry Case				USD MSRP (C)	

Product Size	Finished Graphic Size	Product Wt.	Media
34.5"W x 38.75"-81.5"H x 20.5"D	33.25"W x 37"-80.25"H	22.5 lbs.	Titan™ 13 oz. Scrim Vinyl

Production Lead Time: 2 days from final proof approval



Removable ballast can be filled with water or sand to keep display stable outdoors.



Feet pull out for added stability in outdoor conditions.



A-FRAME RETRACTOR

Suitable for indoor or outdoor use, this retractor is constructed like an A-frame for a unique landscape-style display.

- The wide stance of the two horizontal banners clipped onto the two center poles creates an A-frame shape
- Compact, portable and easy to assemble
- Banners used outdoors have a 90-day warranty

A-Frame Retractor

Item #	Description	1	2-5	6-11	12-24
261280	4' 13 oz. Scrim Vinyl Kit	641.50	603.00	577.50	539.00
261285	5' 13 oz. Scrim Vinyl Kit	708.00	665.50	637.00	594.50
Kit Includes: Hardware, 2 Installed Graphics and Soft Carry Case				USD MSRP (C)	

Description	Product Size	Finished Graphic Size	Product Wt.
4'	50"W x 43.5"H x 29.5"D	47.5"W x 40"H	31 lbs.
5'	61.75"W x 43.5"H x 29.5"D	59.25"W x 40"H	34.5 lbs.

Production Lead Time: 2 days from final proof approval



Banner rail easily attaches to the top of the pole for quick setup.



OUTDOOR FITTED TABLE THROW

This heavy-duty throw can handle wind and spills, making it a perfect choice for outdoor events.

- Stays on the table, even in wind
- Covers four sides of the table
- Artwork is dye sublimated on 400 denier polyester
- Machine-washable
- Flame retardant certified for exhibit hall use

Full-Color Full-Bleed

Item #	Description	1	2-5	6-11	12-24
107060	6' Outdoor Fitted Throw	399.25	347.25	327.50	299.50
107061	8' Outdoor Fitted Throw	447.75	407.50	389.50	367.25
White fabric fully dye sublimated with full-color artwork.				USD MSRP (C)	

Description	Table Size	Full-Bleed Graphic Size	Product Wt.
6'	72"W x 29"H x 29.75"D	View Online Template	3.2 lbs.
8'	96"W x 29"H x 29.75"D	View Online Template	4.2 lbs.

Production Lead Time: 3 days from final proof approval



Water- and Spill-Resistant!

Prices are subject to change; visit our website for the most current pricing.
Setup fee: \$20.00(G); no setup fee on orders placed via our website. View current graphic templates, assembly videos and instructions on our website.

DID YOU KNOW WE SELL THESE PRODUCTS TOO?



Twist



Fringe



Parking Pal



Floral Sheeting



Parade Banners



TrashWorks Wrap



Parade Float Kits



WE'RE BEYOND COMPLIANT.
WE'RE APPROVED!