

2023 BEST SELLERS



DISPLAY SOLUTIONS
PROMOTIONS • EVENTS • TRADE SHOWS

TABLE COVERS

When choosing a table cover have you considered...

- How often will you be using your table cover?
- Does your throw need to cover all four sides of the table, or would you like an open back?
- Do you want a logo printed on the front, or would you like a full-color design that covers the entire throw?

28 STOCK THROW COLORS

| | | | |
|---------------------------|-----------------------------|-------------------------------|--------------------------------|
| LEMON PMS 109 * | RED PMS 201 | PURPLE PMS VIOLET | LIME GREEN PMS 375 |
| YELLOW PMS 1235 | BURGUNDY PMS 504 | AQUAMARINE PMS 2231 | EMERALD * |
| MANGO PMS 1375 | FLAMINGO PMS 1767 | COBALT * | SHAMROCK PMS 361 |
| ORANGE PMS 1505 | HOT PINK PMS 219 | BLUEBERRY PMS 647 | HUNTER GREEN PMS 350 |
| PEACH PMS 162 | MULBERRY PMS 683 | ROYAL BLUE PMS 661 | HAZELNUT PMS 7575 |
| CHERRY * | GRAPE PMS 268 | NAVY BLUE * | BROWN PMS 476 |
| | | | WHITE * |
| | | | GRAY PMS 422 |
| | | | CHARCOAL PMS 425 |
| | | | BLACK * |



* indicates stock throw colors that closely align with our stock tent canopy colors.

PMS colors are for reference only and may vary slightly from actual color.



Full-Color Front Only

- Simple to complex graphics
- Vector art preferred; imprinted on front only
- Available in stock fabric colors only
- Maximum artwork size requirements apply
- Large maximum imprint area for more graphic coverage
- Fold and store in included poly bag



Full-Color Full-Bleed

- Simple, complex and photographic graphics
- Vector and raster art accepted
- Art is dye sublimated on white fabric only
- Full-color artwork can be printed across the entire throw
- No artwork size requirements
- Fold and store in included poly bag



GOOD

LAZERLINE THROW

These cost-effective throws are laser-cut for a crisp finished edge.

- Available in full-color front only and full-color full-bleed
- Heat-treated edges will not fray or unravel
- Available in 3-sided or 4-sided throw styles
- Polyester poplin
- Machine-washable and wrinkle-resistant
- Flame retardant certified for exhibit hall use



Full-Color Front Only

| Item # | Description | 1 | 2-5 | 6-11 | 12-24 |
|--------|----------------------------|--------|--------|--------|--------|
| 108213 | 6' LazerLine 3-Sided Throw | 170.60 | 148.40 | 139.90 | 128.00 |
| 108214 | 8' LazerLine 3-Sided Throw | 189.30 | 164.70 | 155.20 | 142.00 |
| 108201 | 6' LazerLine 4-Sided Throw | 189.30 | 164.70 | 155.20 | 142.00 |
| 108202 | 8' LazerLine 4-Sided Throw | 208.00 | 181.00 | 170.60 | 156.00 |

Stock fabric colors with full-color artwork printed on front. Artwork cannot exceed maximum size requirements.

USD MSRP (C)

| Description | Table Size | Front Only Graphic Size | Product Wt. (3-Sided / 4-Sided) |
|-------------|-----------------------|-------------------------|---------------------------------|
| 6' | 72"W x 29"H x 29.75"D | 64"W x 25"H | 2 lbs. / 2.5 lbs. |
| 8' | 96"W x 29"H x 29.75"D | 64"W x 25"H | 2.5 lbs. / 3 lbs. |

Full-Color Full-Bleed

| Item # | Description | 1 | 2-5 | 6-11 | 12-24 |
|--------|----------------------------|--------|--------|--------|--------|
| 108216 | 6' LazerLine 3-Sided Throw | 170.60 | 148.40 | 139.90 | 128.00 |
| 108217 | 8' LazerLine 3-Sided Throw | 189.30 | 164.70 | 155.20 | 142.00 |
| 108204 | 6' LazerLine 4-Sided Throw | 189.30 | 164.70 | 155.20 | 142.00 |
| 108205 | 8' LazerLine 4-Sided Throw | 208.00 | 181.00 | 170.60 | 156.00 |

White fabric fully dye sublimated with full-color artwork.

USD MSRP (C)

| Description | Table Size | Full-Bleed Graphic Size | Product Wt. (3-Sided / 4-Sided) |
|-------------|-----------------------|-------------------------|---------------------------------|
| 6' | 72"W x 29"H x 29.75"D | View Online Template | 2 lbs. / 2.5 lbs. |
| 8' | 96"W x 29"H x 29.75"D | View Online Template | 2.5 lbs. / 3 lbs. |

Production Lead Time: 2 days from final proof approval



Laser-cut edges for a clean look.

Prices are subject to change; visit our website for the most current pricing.

Setup fee: \$20.00(G); no setup fee on orders placed via our website. View current graphic templates, assembly videos and instructions on our website.

ECONOMY TABLE THROW

The open-back design of this throw gives you legroom and quick access to anything you store beneath the table.

- Offers a large maximum imprint area for more graphic coverage on full-color front only throws
- Draped corners
- Polyester poplin
- Machine-washable and wrinkle-resistant
- Flame retardant certified for exhibit hall use



Full-Color Front Only

| Item # | Description | 1 | 2-5 | 6-11 | 12-24 |
|--------|------------------|--------|--------|--------|--------|
| 106045 | 4' Economy Throw | 163.60 | 142.30 | 134.20 | 122.70 |
| 106002 | 6' Economy Throw | 229.00 | 199.20 | 187.80 | 171.80 |
| 106014 | 8' Economy Throw | 254.25 | 221.25 | 208.50 | 190.75 |

Stock fabric colors with full-color artwork printed on front.
Artwork cannot exceed maximum size requirements. USD MSRP (C)

| Description | Table Size | Front Only Graphic Size | Product Wt. |
|-------------|-----------------------|-------------------------|-------------|
| 4' | 48"W x 29"H x 29.75"D | 40"W x 25"H | 1.25 lbs. |
| 6' | 72"W x 29"H x 29.75"D | 64"W x 25"H | 2 lbs. |
| 8' | 96"W x 29"H x 29.75"D | 64"W x 25"H | 2.5 lbs. |

Full-Color Full-Bleed

| Item # | Description | 1 | 2-5 | 6-11 | 12-24 |
|--------|------------------|--------|--------|--------|--------|
| 106042 | 4' Economy Throw | 163.60 | 142.30 | 134.20 | 122.70 |
| 106010 | 6' Economy Throw | 229.00 | 199.20 | 187.80 | 171.80 |
| 106022 | 8' Economy Throw | 254.25 | 221.25 | 208.50 | 190.75 |

White fabric fully dye sublimated with full-color artwork. USD MSRP (C)

| Description | Table Size | Full-Bleed Graphic Size | Product Wt. |
|-------------|-----------------------|-------------------------|-------------|
| 4' | 48"W x 29"H x 29.75"D | View Online Template | 1.25 lbs. |
| 6' | 72"W x 29"H x 29.75"D | View Online Template | 2 lbs. |
| 8' | 96"W x 29"H x 29.75"D | View Online Template | 2.5 lbs. |

Production Lead Time: 2 days from final proof approval



8' full-color front only shown in gray

6' full-color full-bleed



Covers three sides of the table with a 9" overhang in back.



Underside of material is blank.

BETTER

STANDARD TABLE THROW

Our most popular and best-selling table throw is elegant in its simplicity.

- Covers four sides of the table, viewable from all sides
- Offers a large maximum imprint area for more graphic coverage on full-color front only throws
- Draped corners
- Polyester poplin
- Machine-washable and wrinkle-resistant
- Flame retardant certified for exhibit hall use



Full-Color Front Only

| Item # | Description | 1 | 2-5 | 6-11 | 12-24 |
|--------|-------------------|--------|--------|--------|--------|
| 109105 | 4' Standard Throw | 176.20 | 153.30 | 144.50 | 132.20 |
| 109002 | 6' Standard Throw | 254.25 | 221.25 | 208.50 | 190.75 |
| 109014 | 8' Standard Throw | 279.25 | 243.00 | 229.00 | 209.50 |

Stock fabric colors with full-color artwork printed on front.
Artwork cannot exceed maximum size requirements. USD MSRP (C)

| Description | Table Size | Front Only Graphic Size | Product Wt. |
|-------------|-----------------------|-------------------------|-------------|
| 4' | 48"W x 29"H x 29.75"D | 40"W x 25"H | 1.5 lbs. |
| 6' | 72"W x 29"H x 29.75"D | 64"W x 25"H | 2.5 lbs. |
| 8' | 96"W x 29"H x 29.75"D | 64"W x 25"H | 3 lbs. |

Full-Color Full-Bleed

| Item # | Description | 1 | 2-5 | 6-11 | 12-24 |
|--------|-------------------|--------|--------|--------|--------|
| 109106 | 4' Standard Throw | 176.20 | 153.30 | 144.50 | 132.20 |
| 109010 | 6' Standard Throw | 254.25 | 221.25 | 208.50 | 190.75 |
| 109022 | 8' Standard Throw | 279.25 | 243.00 | 229.00 | 209.50 |

White fabric fully dye sublimated with full-color artwork. USD MSRP (C)

| Description | Table Size | Full-Bleed Graphic Size | Product Wt. |
|-------------|-----------------------|-------------------------|-------------|
| 4' | 48"W x 29"H x 29.75"D | View Online Template | 1.5 lbs. |
| 6' | 72"W x 29"H x 29.75"D | View Online Template | 2.5 lbs. |
| 8' | 96"W x 29"H x 29.75"D | View Online Template | 3 lbs. |

Production Lead Time: 2 days from final proof approval



8' full-color full-bleed

6' full-color front only shown in royal



Keep your supplies and accessories out of sight.



Add-On

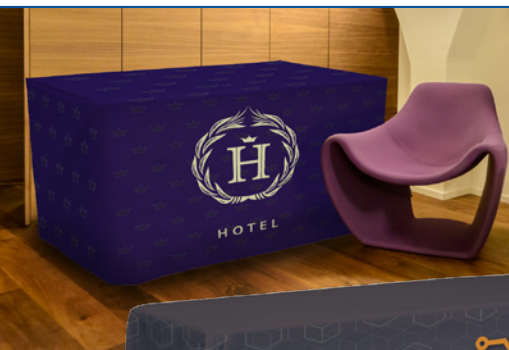
Table Throw Messenger Bag

| Item # | 1 | 2-5 | 6-11 | 12-24 |
|--------|-------|-------|-------|-------|
| 220107 | 42.29 | 41.44 | 40.18 | 39.33 |

USD MSRP (C)

Hardware Lead Time: Ships same day when ordered before 2 pm Central

TABLE COVERS



8' full-color full-bleed transforms into a 6' fitted

CONVERTIBLE TABLE THROW

This throw is easily convertible so it fits both 8' and 6' table sizes.

- Offers a large maximum imprint area for more graphic coverage on full-color front only throws
- Hook-and-loop fasteners make size conversion quick and easy
- Covers four sides of the table
- Polyester poplin
- Machine-washable and wrinkle-resistant
- Flame retardant certified for exhibit hall use



Full-Color Front Only

| Item # | Description | 1 | 2-5 | 6-11 | 12-24 |
|--------|-------------------------|--------|--------|--------|--------|
| 104014 | 6'/8' Convertible Throw | 320.75 | 279.00 | 263.00 | 240.50 |

Stock fabric colors with full-color artwork printed on front.
Artwork cannot exceed maximum size requirements.

Full-Color Full-Bleed

| Item # | Description | 1 | 2-5 | 6-11 | 12-24 |
|--------|-------------------------|--------|--------|--------|--------|
| 104022 | 6'/8' Convertible Throw | 320.75 | 279.00 | 263.00 | 240.50 |

White fabric fully dye sublimated with full-color artwork.

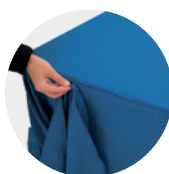
| Table Size | Front Only Graphic Size | Full-Bleed Graphic Size | Product Wt. |
|---------------------------|-------------------------|-------------------------|-------------|
| 72"/96"W x 29"H x 29.75"D | 64"W x 25"H | View Online Template | 3 lbs. |

Production Lead Time: 2 days from final proof approval

Converts from 8' to 6' and Back Again!



1. Grab the back corner of the table throw.



2. Attach the corner to the back of the throw using the built-in hook-and-loop fasteners.



3. Grab the front corner of the throw and fold it tightly around the back corner of the table.



4. Secure it in place with the built-in hook-and-loop fasteners.



57" full-color front only shown in mango



28" with full-color full-bleed

STANDARD TABLE RUNNER

This stylish runner lets you add a logo or design to any table.

- Offers a large maximum imprint area for more graphic coverage for even more ad space on full-color front only runners
- Available in two widths
- Polyester poplin
- Machine-washable and wrinkle-resistant
- Flame retardant certified for exhibit hall use
- Table throw sold separately



Full-Color Front Only

| Item # | Description | 1 | 2-5 | 6-11 | 12-24 |
|--------|---------------------|--------|--------|--------|--------|
| 102002 | 28" Standard Runner | 164.80 | 150.00 | 138.40 | 125.20 |
| 102014 | 57" Standard Runner | 203.80 | 185.50 | 171.20 | 154.90 |

Stock fabric colors with full-color artwork printed on front.
Artwork cannot exceed maximum size requirements.

Full-Color Full-Bleed

| Item # | Description | 1 | 2-5 | 6-11 | 12-24 |
|--------|---------------------|--------|--------|--------|--------|
| 102010 | 28" Standard Runner | 164.80 | 150.00 | 138.40 | 125.20 |
| 102022 | 57" Standard Runner | 203.80 | 185.50 | 171.20 | 154.90 |

White fabric fully dye sublimated with full-color artwork.

| Description | Finished Size | Front Only Graphic Size | Full-Bleed Graphic Size | Product Wt. |
|-------------|---------------|-------------------------|-------------------------|-------------|
| 28" | 28"W x 80"D | 24"W x 25"H | View Online Template | 0.5 lb. |
| 57" | 57"W x 80"D | 50"W x 25"H | View Online Template | 1 lb. |

Production Lead Time: 2 days from final proof approval



Prices are subject to change; visit our website for the most current pricing.
Setup fee: \$20.00(G); no setup fee on orders placed via our website. View current graphic templates, assembly videos and instructions on our website.

BEST

PREMIUM TABLE THROW

Premium throws are perfect for showcasing eye-catching, full-color imagery with an upscale look.

- Covers four sides of the table
- Draped corners
- Nearly-opaque material
- Artwork is dye sublimated on two-way stretch fabric
- Machine-washable
- Flame retardant certified for exhibit hall use



Full-Color Full-Bleed

| Item # | Description | 1 | 2-5 | 6-11 | 12-24 |
|--------|------------------|--------|--------|--------|--------|
| 109070 | 6' Premium Throw | 566.50 | 515.50 | 493.00 | 464.50 |
| 109071 | 8' Premium Throw | 598.00 | 544.00 | 520.50 | 490.50 |

White fabric fully dye sublimated with full-color artwork. USD MSRP (C)

| Description | Table Size | Full-Bleed Graphic Size | Product Wt. |
|-------------|-----------------------|--------------------------------------|-------------|
| 6' | 72"W x 29"H x 29.75"D | View Online Template | 3.5 lbs. |
| 8' | 96"W x 29"H x 29.75"D | View Online Template | 4.75 lbs. |

Production Lead Time: 2 days from final proof approval



Finished with a hemmed edge.



ULTRAFIT TABLE THROW

This form-fitting throw is an attractive option for promoting your brand. It stretches to fit tightly around tables, creating a crisp, refined appearance.

- Tight, form-fitting look
- Artwork is dye sublimated on two-way stretch fabric
- Machine-washable and wrinkle-resistant
- Flame retardant certified for exhibit hall use



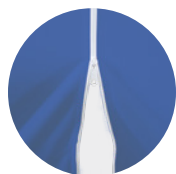
UltraFit Table Throw

| Item # | Description | 1 | 2-5 | 6-11 | 12-24 |
|--------|--|--------|--------|--------|--------|
| 114012 | 31.5" Bar-Height Full-Color Full-Bleed | 388.75 | 353.75 | 338.25 | 318.75 |
| 114100 | 4' Demo Full-Color Full-Bleed | 403.75 | 367.50 | 351.25 | 331.00 |
| 114002 | 6' Classic Full-Color Full-Bleed | 475.00 | 432.25 | 413.25 | 389.50 |
| 114005 | 8' Classic Full-Color Full-Bleed | 527.50 | 480.00 | 459.00 | 432.50 |

White fabric fully dye sublimated with full-color artwork. USD MSRP (C)

| Description | Table Size | Full-Bleed Graphic Size | Product Wt. |
|------------------|-----------------------|--------------------------------------|-------------|
| 31.5" Bar-Height | 43"H x 31.5"D | View Online Template | 1.75 lbs. |
| 4' Demo | 47.75"W x 36"H x 24"D | View Online Template | 2 lbs. |
| 6' Classic | 72"W x 29"H x 29.75"D | View Online Template | 2.5 lbs. |
| 8' Classic | 96"W x 29"H x 29.75"D | View Online Template | 3 lbs. |

Production Lead Time: 4 days from final proof approval



Demo and Classic feature a zippered back for an enclosed storage area.



4' Demo

6' Classic

31.5" Bar-height



Table leg slips into the sleeve to pull the throw taut.

RETRACTABLE BANNERS

When choosing a retractable banner have you considered...

- Will your graphic be permanent, or will you be swapping it out frequently?
- How often will your retractor be set up and taken down?
- Do you want a single- or double-sided display?

GOOD IDEAL RETRACTOR

The Ideal Retractor is designed from the ground up to be a quick, simple solution for short-term promotional applications.

- Lightweight, portable base
- Three-section shock cord pole
- Artwork is printed on tear-resistant Titan™ polypropylene media



Ideal Retractor

| Item # | Description | 1 | 2-5 | 6-11 | 12-24 |
|---|-------------|--------------|--------|--------|--------|
| 261150 | 31.5" Kit | 134.90 | 126.90 | 121.40 | 113.30 |
| 261153 | 33.5" Kit | 148.00 | 139.10 | 133.20 | 124.30 |
| Kit Includes: Hardware, Installed Graphic and Soft Carry Case | | USD MSRP (C) | | | |

| Description | Product Size (Single) | Finished Graphic Size | Product Wt. | Media |
|-------------|-----------------------------|-----------------------|-------------|----------------------------|
| 31.5" | 32.25"W x 82.25"H x 10.25"D | 31.25"W x 79.5"H | 4.6 lbs. | Titan™ Polypropylene Media |
| 33.5" | 34.25"W x 82.25"H x 10.25"D | 33.25"W x 79.5"H | 5 lbs. | Titan™ Polypropylene Media |

Production Lead Time: 1 day from final proof approval



Plastic swivel foot for stability.



Banner rail easily attaches to the top of the pole for quick setup.



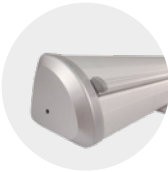
Shock cord pole makes setup and teardown easy.



Lightweight aluminum base features plastic ends.



Shock cord pole makes setup and teardown easy.



Lightweight aluminum base with plastic ends.

VALUE RETRACTOR

The Value Retractor is a cost-conscious option for your portable signage needs.

- Artwork is printed on tear-resistant Titan™ polypropylene media
- Two swivel feet for stability
- Available in three widths



Value Retractor

| Item # | Description | 1 | 2-5 | 6-11 | 12-24 |
|---|-------------------------------|--------------|--------|--------|--------|
| 262240 | 31.5" Polypropylene Media Kit | 180.70 | 169.90 | 162.70 | 151.80 |
| 262243 | 33.5" Polypropylene Media Kit | 189.60 | 178.20 | 170.60 | 159.30 |
| 262246 | 36" Polypropylene Media Kit | 192.20 | 180.70 | 173.00 | 161.50 |
| Kit Includes: Hardware, Installed Graphic and Soft Carry Case | | USD MSRP (C) | | | |

| Description | Product Size | Finished Graphic Size | Product Wt. |
|-------------|-----------------------|-----------------------|-------------|
| 31.5" | 34"W x 82"H x 15"D | 31.5"W x 79.5"H | 7 lbs. |
| 33.5" | 35.75"W x 82"H x 15"D | 33.5"W x 79.5"H | 7.25 lbs. |
| 36" | 38.5"W x 82"H x 15"D | 36"W x 79.5"H | 7.6 lbs. |

Production Lead Time: 2 days from final proof approval

Prices are subject to change; visit our website for the most current pricing.
Setup fee: \$20.00(G); no setup fee on orders placed via our website. [View current graphic templates, assembly videos and instructions on our website.](#)

ECONOMY RETRACTOR

The popular Economy Retractor is versatile and budget-friendly, making it a great option for the cost-conscious marketer.

- Lightweight aluminum base
- Banner available in Titan™ no-curl hybrid media, Titan™ no-curl opaque fabric or PVC-free silver backed media



Economy Retractor

| Item # | Description | 1 | 2-5 | 6-11 | 12-24 |
|---|--|--------------|--------|--------|--------|
| 261134 | 31.5" No-Curl Hybrid Media Kit | 287.00 | 269.75 | 258.25 | 241.25 |
| 262162 | 31.5" No-Curl Opaque Fabric Kit | 287.00 | 269.75 | 258.25 | 241.25 |
| 261364 | 31.5" PVC-Free Silver Backed Media Kit | 287.00 | 269.75 | 258.25 | 241.25 |
| 261136 | 33.5" No-Curl Hybrid Media Kit | 297.50 | 279.50 | 267.75 | 249.75 |
| 262163 | 33.5" No-Curl Opaque Fabric Kit | 297.50 | 279.50 | 267.75 | 249.75 |
| 261366 | 33.5" PVC-Free Silver Backed Media Kit | 297.50 | 279.50 | 267.75 | 249.75 |
| 261138 | 36" No-Curl Hybrid Media Kit | 332.25 | 312.25 | 299.00 | 279.00 |
| 262164 | 36" No-Curl Opaque Fabric Kit | 332.25 | 312.25 | 299.00 | 279.00 |
| 261368 | 36" PVC-Free Silver Backed Media Kit | 332.25 | 312.25 | 299.00 | 279.00 |
| Kit Includes: Hardware, Installed Graphic and Soft Carry Case | | USD MSRP (C) | | | |

| Description | Product Size | Finished Graphic Size | Product Wt. |
|-------------|------------------------|-----------------------|-------------|
| 31.5" | 32"W x 83.5"H x 15"D | 31.5"W x 78.5"H | 7 lbs. |
| 33.5" | 34"W x 83.5"H x 15"D | 33.5"W x 78.5"H | 7.25 lbs. |
| 36" | 36.5"W x 83.5"H x 15"D | 36"W x 78.5"H | 8.5 lbs. |

Production Lead Time: 2 days from final proof approval

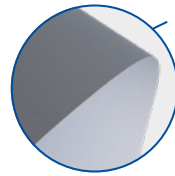


Add-On

Ultimate LED Single Light Kit

| Item # | Description | 1 | 2-5 | 6-11 | 12-24 |
|--------|-------------|--------------|--------|--------|--------|
| 150120 | Kit | 181.20 | 175.80 | 170.30 | 164.90 |
| | | USD MSRP (C) | | | |

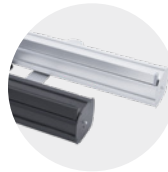
Hardware Lead Time: Ships same day when ordered before 2 pm Central



Display in eco-friendly style with PVC-free media and a recyclable aluminum base.



31.5" with single light kit (sold separately)



Hardware available in silver or black.



Two swivel feet for stability.



Banner rail easily attaches to the top of the pole for quick setup.

BETTER

ECONOMY PLUS RETRACTOR

This display elevates our popular Economy Retractor with improved durability and additional features.

- Available in two widths
- Single-footed design keeps the retractor stable while maintaining a low profile
- Flip-lever telescoping pole makes setup and adjustment simple
- Banner available in Titan™ no-curl hybrid media or dry-erase media



Economy Plus Retractor

| Item # | Description | 1 | 2-5 | 6-11 | 12-24 |
|---|--------------------------------|--------------|--------|--------|--------|
| 261012 | 31.5" No-Curl Hybrid Media Kit | 325.75 | 306.00 | 293.00 | 273.50 |
| 262191 | 31.5" Dry-Erase Media Kit | 325.75 | 306.00 | 293.00 | 273.50 |
| 261002 | 33.5" No-Curl Hybrid Media Kit | 343.00 | 322.50 | 308.50 | 288.00 |
| 262192 | 33.5" Dry-Erase Media Kit | 343.00 | 322.50 | 308.50 | 288.00 |
| Kit Includes: Hardware, Installed Graphic and Soft Carry Case | | USD MSRP (C) | | | |

| Description | Product Size | Finished Graphic Size | Product Wt. |
|-------------|--------------------------|-----------------------|-------------|
| 31.5" | 32"W x 62"-82.5"H x 15"D | 31.5"W x 58"-78.5"H | 7 lbs. |
| 33.5" | 34"W x 62"-82.5"H x 15"D | 33.5"W x 58"-78.5"H | 7.5 lbs. |

Production Lead Time: 2 days from final proof approval



Dry-erase media lets you write out your message and wipe it away (markers not included).



Hook-and-loop fasteners make banners easy to swap out.





Dry-erase media lets you write out your message and wipe it away (markers not included).

DELUXE PRO RETRACTOR

The Deluxe Pro Retractor features a curved base with durable aluminum end caps. Swapping out graphics is a breeze with the hook-and-loop banner system.

- Banner available in Titan™ no-curl opaque fabric or dry-erase media
- Banner is printed single-sided; double-sided option includes two banners



Deluxe Pro Retractor

| Item # | Description | 1 | 2-5 | 6-11 | 12-24 |
|--|--|--------------|--------|--------|--------|
| 262250 | 33.5" Single No-Curl Opaque Fabric Kit | 354.75 | 333.50 | 319.25 | 298.00 |
| 262251 | 33.5" Double No-Curl Opaque Fabric Kit | 536.00 | 522.50 | 480.50 | 467.00 |
| 262202 | 33.5" Single Dry-Erase Media Kit | 354.75 | 333.50 | 319.25 | 298.00 |
| 262203 | 33.5" Double Dry-Erase Media Kit | 536.00 | 522.50 | 480.50 | 467.00 |
| 262254 | 46.5" Single No-Curl Opaque Fabric Kit | 475.50 | 447.00 | 427.75 | 399.25 |
| 262255 | 46.5" Double No-Curl Opaque Fabric Kit | 702.00 | 683.00 | 629.00 | 610.00 |
| 262204 | 46.5" Single Dry-Erase Media Kit | 475.50 | 447.00 | 427.75 | 399.25 |
| 262205 | 46.5" Double Dry-Erase Media Kit | 702.00 | 683.00 | 629.00 | 610.00 |
| Kit Includes: Hardware, Installed Graphic(s) and Soft Carry Case | | USD MSRP (C) | | | |

| Description | Product Size (Single / Double) | Finished Graphic Size | Product Wt. (Single / Double) |
|-------------|---|-----------------------|-------------------------------|
| 33.5" | 34.75"W x 65.25"-83.25"H x 8.5"D / 9.25"D | 33.5"W x 61.5"-79.5"H | 12.25 lbs. / 16 lbs. |
| 46.5" | 48.5"W x 65.25"-83.25"H x 8.5"D / 9.25"D | 46.5"W x 61.5"-79.5"H | 16.75 lbs. / 22.5 lbs. |

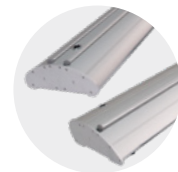
Production Lead Time: 1 day for no-curl opaque fabric / 2 days for dry-erase media from final proof approval



Flip-lever telescoping pole makes setup and adjustment simple.



Hook-and-loop fasteners make banners easy to swap out.



Streamlined base is available in single- and double-banner options.



STRATUS RETRACTOR

The Stratus Retractor's streamlined base features a low center of gravity to keep it stable, eliminating the need for fold-out feet.

- Durable, lightweight construction
- Banner available in Titan™ no-curl hybrid media or Titan™ no-curl opaque fabric



Stratus Retractor

| Item # | Description | 1 | 2-5 | 6-11 | 12-24 |
|---|---------------------------------|--------------|--------|--------|--------|
| 262072 | 31.5" No-Curl Hybrid Media Kit | 348.00 | 327.25 | 313.25 | 292.50 |
| 262151 | 31.5" No-Curl Opaque Fabric Kit | 348.00 | 327.25 | 313.25 | 292.50 |
| 262074 | 33.5" No-Curl Hybrid Media Kit | 361.50 | 339.75 | 325.25 | 303.50 |
| 262152 | 33.5" No-Curl Opaque Fabric Kit | 361.50 | 339.75 | 325.25 | 303.50 |
| 262076 | 36" No-Curl Hybrid Media Kit | 384.50 | 361.50 | 346.00 | 323.00 |
| 262153 | 36" No-Curl Opaque Fabric Kit | 384.50 | 361.50 | 346.00 | 323.00 |
| Kit Includes: Hardware, Installed Graphic and Soft Carry Case | | USD MSRP (C) | | | |

| Description | Product Size | Finished Graphic Size | Product Wt. |
|-------------|------------------------------------|-------------------------|-------------|
| 31.5" | 33"W x 67.5"-81.625"H x 7.125"D | 31.5"W x 64.375"-78.5"H | 11.25 lbs. |
| 33.5" | 34.25"W x 67.5"-81.625"H x 7.125"D | 33.5"W x 64.375"-78.5"H | 12 lbs. |
| 36" | 37.25"W x 67.5"-81.625"H x 7.125"D | 36"W x 64.375"-78.5"H | 12.5 lbs. |

Production Lead Time: 2 days from final proof approval



Hook-and-loop fasteners make banner easy to swap out.



Aluminum base features chrome end caps and has a low center of gravity.



Shock cord pole with telescoping flip-lever extension makes setup and adjustment simple.

Prices are subject to change; visit our website for the most current pricing.
Setup fee: \$20.00(G); no setup fee on orders placed via our website. View current graphic templates, assembly videos and instructions on our website.

BEST

SPOTLIGHT RETRACTOR

Illuminate the possibilities at your next event with this lit retractor.

- Has the look of a light box with the portability, convenience and easy set up of a retractable banner
- Artwork is printed on flexible backlit film
- Light is radiated from the base by LED lights
- Kit includes two single-sided banners
- Illuminate up to three units via a single power source with the included connector cords
- On/off switch for the lights is located on the side of the base
- UL/CE certified
- US Patent #201920486314.5



Spotlight Retractor

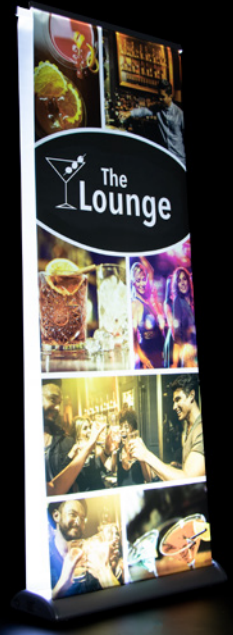
| Item # | Description | 1 | 2-5 | 6-11 | 12-24 |
|--|-------------|--------------|--------|--------|--------|
| 261304 | Kit | 706.50 | 664.50 | 635.50 | 593.50 |
| Kit Includes: Hardware, 2 Installed Graphics and Soft Carry Case | | USD MSRP (C) | | | |

| Product Size | Finished Graphic Size | Product Wt. | Media |
|-----------------------|-----------------------|-------------|-----------------------|
| 34"W x 84"H x 10.25"D | 31.25"W x 78.5"H | 22 lbs. | Flexible Backlit Film |

Production Lead Time: 2 days from final proof approval



LIGHTS UP!



Connector cord can be used to link retractors together.



LED lights integrated into the base provide illumination.



Hardware holds two banners for a double-sided display.



Shock cord pole makes setup and teardown easy.

SPECIALTY

JUMBO WIDE RETRACTOR

Create an impressive backdrop with this ultra-wide retractable banner.

- High-tension base springs keep the banner taut
- Double-footed design for stability
- Banner available in Titan™ no-curl fabric or Titan™ 13 oz. smooth scrim vinyl
- Available in three widths

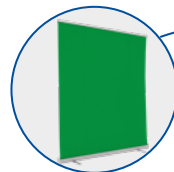


Jumbo Wide Retractor

| Item # | Description | 1 | 2-5 | 6-11 | 12-24 |
|---|----------------------------------|--------------|--------|--------|--------|
| 262138 | 5' No-Curl Fabric Kit | 705.50 | 663.00 | 635.00 | 592.50 |
| 261080 | 5' 13 oz. Smooth Scrim Vinyl Kit | 705.50 | 663.00 | 635.00 | 592.50 |
| 262139 | 6' No-Curl Fabric Kit | 852.50 | 801.50 | 767.50 | 716.00 |
| 261082 | 6' 13 oz. Smooth Scrim Vinyl Kit | 852.50 | 801.50 | 767.50 | 716.00 |
| 262140 | 8' No-Curl Fabric Kit | 996.50 | 936.50 | 897.00 | 837.00 |
| 261018 | 8' 13 oz. Smooth Scrim Vinyl Kit | 996.50 | 936.50 | 897.00 | 837.00 |
| Kit Includes: Hardware, Installed Graphic and Soft Carry Case | | USD MSRP (C) | | | |

| Description | Product Size | Finished Graphic Size | Product Wt. (Fabric / Vinyl) |
|-------------|-------------------------|-----------------------|------------------------------|
| 5' | 60.5"W x 83"H x 15.75"D | 59.75"W x 78.75"H | 18.85 lbs. / 20.75 lbs. |
| 6' | 72.5"W x 83"H x 15.75"D | 71.75"W x 78.75"H | 21.35 lbs. / 23.5 lbs. |
| 8' | 95.5"W x 83"H x 15.75"D | 94.75"W x 78.75"H | 26.35 lbs. / 29.5 lbs. |

Production Lead Time: 2 days for 13 oz. smooth scrim vinyl / 4 days for no-curl fabric from final proof approval



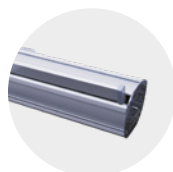
Get a green screen compatible backdrop printed as PMS 354C; available online.



5'

6'

8'



Hardware comes in silver.



Two shock cord poles support the banner.

Prices are subject to change; visit our website for the most current pricing.
Setup fee: \$20.00(G); no setup fee on orders placed via our website. View current graphic templates, assembly videos and instructions on our website.



Eco-friendly media is made up of 100% recycled materials; available online.

EUROFIT BANNER DISPLAY

A fabric graphic cover slides over a tubed frame, letting you create amazing backdrops or portable privacy walls.

- Multiple sizes can be arranged together for endless display possibilities
- Artwork is dye sublimated on polyester knit
- Double-sided graphic cover is viewable from both the front and back of the display
- Steel base with a black, powder-coated finish
- Not compatible with the EuroFit Connector or EuroFit Cascade Merchandiser kits



EuroFit Banner Display

| Item # | Description | 1 | 2-5 | 6-11 | 12-24 |
|--------|-----------------------|--------|--------|--------|--------|
| 255110 | 2' Polyester Knit Kit | 283.00 | 274.00 | 266.00 | 257.00 |
| 255113 | 3' Polyester Knit Kit | 389.00 | 378.00 | 366.00 | 354.00 |

Kit Includes: Hardware, Graphic Cover and Soft Carry Case

USD MSRP (C)

| Description | Product Size | Finished Graphic Size | Product Wt. | Media |
|-------------|-----------------------|-----------------------|-------------|----------------|
| 2' | 25.75"W x 91"H x 10"D | View Online Template | 15.5 lbs. | Polyester Knit |
| 3' | 37.75"W x 91"H x 10"D | View Online Template | 20.5 lbs. | Polyester Knit |

Production Lead Time: 4 days from final proof approval

Add-Ons

Ultimate LED Light Kit and EuroFit Light Clamp

Add an Ultimate LED Light Kit to your display using the EuroFit Light Clamp (sold separately). For use on horizontal tubing only.

| Item # | Description | 1 | 2-5 | 6-11 | 12-24 |
|--------|-------------------------------|--------|--------|--------|--------|
| 150120 | Ultimate LED Single Light Kit | 181.20 | 175.80 | 170.30 | 164.90 |
| 255125 | EuroFit Light Clamp | 6.80 | 6.60 | 6.40 | 6.20 |



Hardware Lead Time: Ships same day when ordered before 2 pm Central



FRAMEWORX BANNER DISPLAY

These lightweight displays feature a contemporary design that brings new life to your exhibit.

- Banners attach using low-profile clear grommets
- Face cutout hole location is standard and cannot be customized



FrameWorx Banner Display

| Item # | Description | 1 | 2-5 | 6-11 | 12-24 |
|--------|---|--------|--------|--------|--------|
| 263061 | 3' 13 oz. Smooth Scrim Vinyl Single-Sided Kit | 179.20 | 172.00 | 166.70 | 157.70 |
| 263062 | 3' 13 oz. Smooth Scrim Vinyl Double-Sided Kit | 214.40 | 205.80 | 199.40 | 188.70 |
| 263328 | 8.5' 400 Denier Polyester Kit | 471.75 | 453.00 | 438.75 | 415.25 |
| 263331 | 10.5' 400 Denier Polyester Kit | 516.00 | 495.50 | 480.00 | 454.00 |

3' Kit Includes: Silver or Black Hardware, Graphic and Soft Carry Case
8.5' & 10.5' Kit Includes: Black Hardware, Graphic and Soft Carry Case

USD MSRP (C)

| Description | Product Size | Finished Graphic Size | Product Wt. |
|-------------|-----------------------------|-----------------------|-------------|
| 3' | 36.75"W x 74"H x 15.5"D | View Online Template | 5.6 lbs. |
| 8.5' | 101.75"W x 90.5"H x 15.5"D | View Online Template | 15 lbs. |
| 10.5' | 123.25"W x 90.25"H x 15.5"D | View Online Template | 17 lbs. |

3.5' FrameWorx Face Cutout

| Item # | Description | 1 | 2-5 | 6-11 | 12-24 |
|--------|--|--------|--------|--------|--------|
| 263054 | 13 oz. Smooth Scrim Vinyl Single Face Cutout Kit | 200.30 | 192.30 | 186.30 | 176.30 |

Kit Includes: Silver or Black Hardware, Graphic and Soft Carry Case

USD MSRP (C)

| Product Size | Finished Graphic Size | Product Wt. |
|-------------------------|-----------------------|-------------|
| 41"W x 81.75"H x 15.5"D | View Online Template | 6.2 lbs. |

Production Lead Time: 2 days for smooth scrim vinyl / 4 days for 400 denier polyester from final proof approval

Prices are subject to change; visit our website for the most current pricing.

Setup fee: \$20.00(G); no setup fee on orders placed via our website. View current graphic templates, assembly videos and instructions on our website.

EVERYDAY BANNER DISPLAY

These displays feature a durable steel frame with a long-lasting, powder-coated finish.

- The Everyday Banner Display features pole pockets and dowels to hold the banner in place
- The Everyday Heavy-Duty Banner Display has all the same features as the Everyday Banner Display, but reinforced with a stronger, thicker frame and wider base
- The Everyday Snap Rail Banner Display replaces the dowel and pole pockets with snap rails for a clean finish
- Hex wrench included



Everyday Banner Display (Single-Sided)

| Item # | Description | 1 | 2-5 | 6-11 | 12-24 |
|--------|-------------------------|--------|--------|--------|--------|
| 210265 | Everyday Kit | 232.90 | 223.60 | 216.60 | 205.00 |
| 210226 | Everyday Heavy-Duty Kit | 275.50 | 264.50 | 256.25 | 242.50 |

Kit Includes: Hardware, Graphic and (2) 24" Dowels

| Description | Product Size | Finished Graphic Size | Product Wt. | Media |
|-------------|-------------------------|-----------------------|-------------|-------------------------|
| Everyday | 24"W x 48"-92"H x 13"D | 12"-36"W x 12"-91"H | 11 lbs. | Titan™ 11 mil Polyester |
| Heavy-Duty | 24"W x 55"-105"H x 14"D | 12"-36"W x 12"-104"H | 13.5 lbs. | Titan™ 11 mil Polyester |

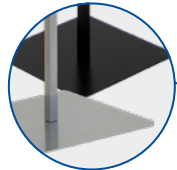
Everyday Snap Rail Banner Display (Single-Sided)

| Item # | Description | 1 | 2-5 | 6-11 | 12-24 |
|--------|-------------|--------|--------|--------|--------|
| 264030 | 24" Kit | 258.00 | 247.75 | 240.00 | 227.00 |
| 264032 | 30" Kit | 270.75 | 260.00 | 251.75 | 238.25 |

24" Kit Includes: Hardware and Graphic
30" Kit Includes: Hardware and Graphic

| Description | Product Size | Finished Graphic Size | Product Wt. | Media |
|-------------|---------------------------|-----------------------|-------------|-------------------------|
| 24" | 24"W x 48"-92"H x 13.25"D | 24"W x 12"-92"H | 13 lbs. | Titan™ 11 mil Polyester |
| 30" | 30"W x 48"-92"H x 13.25"D | 30"W x 12"-92"H | 14 lbs. | Titan™ 11 mil Polyester |

Production Lead Time: 2 days from final proof approval



Hardware available in silver or black (Heavy-Duty and Snap Rail hardware only available in black).



Everyday banner display with silver hardware



Everyday Heavy-Duty banner display



Everyday Snap Rail banner display

HEADLINER BANNER DISPLAY

This enormous banner display is great for use in parking lots or at outdoor events.

- Banner available in premium woven polyester or Titan™ 18 oz. opaque scrim vinyl
- Vinyl banners can be printed single- or double-sided; polyester banner available single-sided only
- Includes four heavy-duty black stakes
- Adjustable frame hardware is compatible with custom banner heights and widths (call for quote; restrictions may apply)
- Banners used outdoors have a 90-day warranty; banners used indoors have a 1-year warranty



Headliner Banner Display

| Item # | Description | 1 | 2-5 | 6-11 | 12-24 |
|--------|--|---------|---------|---------|---------|
| 263400 | Premium Woven Polyester Single-Sided Kit | 1574.00 | 1511.00 | 1464.00 | 1385.00 |
| 263401 | 18 oz. Opaque Scrim Vinyl Single-Sided Kit | 1574.00 | 1511.00 | 1464.00 | 1385.00 |
| 263402 | 18 oz. Opaque Scrim Vinyl Double-Sided Kit | 1699.00 | 1631.00 | 1580.00 | 1495.00 |

Kit Includes: Hardware, Graphic, 4 Stakes and Soft Carry Case with Wheels

| Product Size | Finished Graphic Size | Product Wt. (Polyester / Vinyl) |
|-----------------------------|-----------------------|---------------------------------|
| 129.75"W x 85.25"H x 39.5"D | 119"W x 76.5"H | 56 lbs. / 60 lbs. |

Production Lead Time: 2 days for 18 oz. scrim vinyl / 4 days for premium woven polyester from final proof approval



Heavy-duty steel foot features a handle so it's easy to position during setup.



Thumbscrews on the frame make it easy to set up and adjust.



Banner rail slides into notches in the frame's hubs.



Ballasts (sold separately; see website) keep the feet weighted down.

Prices are subject to change; visit our website for the most current pricing.
Setup fee: \$20.00(G); no setup fee on orders placed via our website. View current graphic templates, assembly videos and instructions on our website.

BANNERS

When choosing a banner have you considered...

- Will you be using your banner indoors or outdoors?
- How long will your banner be displayed?
- Do you need a single- or double-sided banner?



3' x 6' banner with grommets



3' x 8' banner with grommets



2' x 4' banner with pole pockets

POPULAR BANNER FINISHING STYLES

Additional finishing styles available online.

Heat Weld

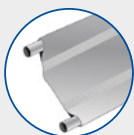
Single-sided vinyl banners only



HEM & GROMMETS



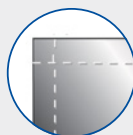
HEM, ROPE & GROMMETS



3" POLE POCKETS

Sewn

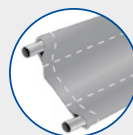
Fabric and double-sided vinyl banners



HEM ONLY



HEM & GROMMETS



3" POLE POCKETS

GOOD

9 OZ. MESH VINYL BANNER

This single-sided banner is made of breathable 60/40 mesh vinyl that excels on breezy days.

- Multiple finishing styles available



9 oz. Mesh Vinyl Banner

| Item # | Description | Product Wt. | 1 | 2-4 | 5-14 | 15-33 |
|--------|-------------|-------------|--------|--------|--------|--------|
| 304411 | 2' x 6' | 1.25 lbs. | 60.72 | 55.92 | 51.24 | 47.40 |
| Item # | Description | Product Wt. | 1 | 2-3 | 4-9 | 10-22 |
| 304414 | 3' x 6' | 2 lbs. | 91.08 | 83.88 | 76.86 | 71.10 |
| Item # | Description | Product Wt. | 1 | 2-5 | 6-12 | 13-24 |
| 304417 | 4' x 8' | 3 lbs. | 149.12 | 136.64 | 126.40 | 114.24 |

USD MSRP (C)

Production Lead Time: 2 days from final proof approval

BETTER

13 OZ. SCRIM VINYL BANNER

Versatile enough for both indoor and outdoor use, this single-sided banner is a top choice.

- Multiple finishing styles available



13 oz. Scrim Vinyl Banner

| Item # | Description | Product Wt. | 1-2 | 3-7 | 8-22 | 23-49 |
|--------|-------------|-------------|--------|--------|--------|-------|
| 304360 | 2' x 4' | 1 lb. | 35.52 | 32.48 | 29.20 | 27.20 |
| Item # | Description | Product Wt. | 1 | 2-3 | 4-9 | 10-22 |
| 304364 | 3' x 6' | 2.5 lbs. | 79.92 | 73.08 | 65.70 | 61.20 |
| Item # | Description | Product Wt. | 1 | 2-5 | 6-12 | 13-24 |
| 304367 | 4' x 8' | 4 lbs. | 129.92 | 116.80 | 108.80 | 97.28 |

USD MSRP (C)

Production Lead Time: 2 days from final proof approval

BEST

18 OZ. OPAQUE SCRIM VINYL BANNER

This banner is reinforced with scrim, making it extremely durable for outdoor use.

- Multiple finishing styles available



18 oz. Opaque Scrim Vinyl Banner (Single-Sided)

| Item # | Description | Product Wt. | 1 | 2-3 | 4-9 | 10-22 |
|--------|-------------|-------------|--------|--------|--------|--------|
| 304384 | 3' x 6' | 2.5 lbs. | 91.08 | 83.70 | 76.86 | 71.10 |
| Item # | Description | Product Wt. | 1 | 2-5 | 6-12 | 13-24 |
| 304387 | 4' x 8' | 4 lbs. | 148.80 | 136.64 | 126.40 | 114.24 |
| Item # | Description | Product Wt. | 1 | 2-4 | 5-9 | 10-19 |
| 304388 | 4' x 10' | 5 lbs. | 186.00 | 170.80 | 158.00 | 142.80 |

USD MSRP (C)

18 oz. Opaque Scrim Vinyl Banner (Double-Sided)

| Item # | Description | Product Wt. | 1-2 | 3-7 | 8-22 | 23-49 |
|--------|-------------|-------------|--------|--------|--------|--------|
| 304470 | 2' x 4' | 1 lb. | 85.76 | 80.48 | 74.88 | 70.40 |
| Item # | Description | Product Wt. | 1 | 2-3 | 4-9 | 10-22 |
| 304472 | 3' x 6' | 2.5 lbs. | 192.96 | 181.08 | 168.48 | 158.40 |
| Item # | Description | Product Wt. | 1 | 2-5 | 6-12 | 13-24 |
| 304474 | 4' x 8' | 4 lbs. | 321.92 | 299.52 | 281.60 | 260.48 |

USD MSRP (C)

Production Lead Time: 2 days from final proof approval

Prices are subject to change; visit our website for the most current pricing.

Setup fee: \$20.00(G); no setup fee on orders placed via our website. View current graphic templates, assembly videos and instructions on our website.

SAIL SIGNS

Sail signs are built to move in the wind, making them truly hard to miss.

- Warranty information available online



GOOD

Value Teardrop Sail Sign

| Description | Item # | 1 | 2-5 | 6-11 | 12-24 | Item # | 1 | 2-5 | 6-11 | 12-24 |
|--|--------|--------|--------|--------|--------|--------|--------|--------|--------|--------------|
| 6.5' Kit with Cross Base and Water Ballast | 191611 | 190.10 | 184.40 | 174.90 | 169.20 | 191613 | 286.50 | 277.75 | 263.50 | 255.00 |
| 9.5' Kit with Cross Base and Water Ballast | 191619 | 216.30 | 209.80 | 198.90 | 192.50 | 191621 | 328.75 | 319.00 | 302.50 | 292.75 |
| 13' Kit with Cross Base and Water Ballast | 191627 | 285.00 | 276.50 | 262.25 | 253.75 | 191629 | 429.75 | 416.75 | 395.25 | 382.50 |
| Kit Includes: Hardware with Specified Base and Graphic (Does not include carry case) | | | | | | | | | | USD MSRP (C) |

Value Razor Sail Sign

| Description | Item # | 1 | 2-5 | 6-11 | 12-24 | Item # | 1 | 2-5 | 6-11 | 12-24 |
|--|--------|--------|--------|--------|--------|--------|--------|--------|--------|--------------|
| 7.5' Kit with Cross Base and Water Ballast | 191651 | 190.10 | 184.40 | 174.90 | 169.20 | 191653 | 286.50 | 277.75 | 263.50 | 255.00 |
| 10.5' Kit with Cross Base and Water Ballast | 191659 | 216.30 | 209.80 | 198.90 | 192.50 | 191661 | 328.75 | 319.00 | 302.50 | 292.75 |
| 15' Kit with Cross Base and Water Ballast | 191667 | 285.00 | 276.50 | 262.25 | 253.75 | 191669 | 429.75 | 416.75 | 395.25 | 382.50 |
| Kit Includes: Hardware with Specified Base and Graphic (Does not include carry case) | | | | | | | | | | USD MSRP (C) |

BETTER

Streamline Teardrop Sail Sign

| Description | Item # | 1 | 2-5 | 6-11 | 12-24 | Item # | 1 | 2-5 | 6-11 | 12-24 |
|---|--------|--------|--------|--------|--------|--------|--------|--------|--------|--------------|
| 6' Kit with Three-Legged Base and Water Ballast | 191401 | 267.00 | 259.00 | 245.50 | 237.75 | 191409 | 368.75 | 357.75 | 339.25 | 328.25 |
| 8' Kit with Scissor Base and Water Ballast | 191403 | 337.75 | 327.50 | 310.75 | 300.75 | 191411 | 455.25 | 441.50 | 419.00 | 405.25 |
| 11.5' Kit with Scissor Base and Water Ballast | 191405 | 398.00 | 386.00 | 366.00 | 354.25 | 191413 | 565.50 | 548.50 | 520.00 | 503.50 |
| 15' Kit with Scissor Base and Water Ballast | 191407 | 470.25 | 456.00 | 432.75 | 418.50 | 191415 | 682.00 | 661.50 | 627.50 | 607.00 |
| Kit Includes: Hardware with Specified Base, Graphic and Soft Carry Case | | | | | | | | | | USD MSRP (C) |

Streamline Razor Sail Sign

| Description | Item # | 1 | 2-5 | 6-11 | 12-24 | Item # | 1 | 2-5 | 6-11 | 12-24 |
|---|--------|--------|--------|--------|--------|--------|--------|--------|--------|--------------|
| 7' Kit with Three-Legged Base and Water Ballast | 191429 | 267.00 | 259.00 | 245.50 | 237.75 | 191437 | 368.75 | 357.75 | 339.25 | 328.25 |
| 9' Kit with Scissor Base and Water Ballast | 191431 | 337.75 | 327.50 | 310.75 | 300.75 | 191439 | 455.25 | 441.50 | 419.00 | 405.25 |
| 13' Kit with Scissor Base and Water Ballast | 191433 | 398.00 | 386.00 | 366.00 | 354.25 | 191441 | 565.50 | 548.50 | 520.00 | 503.50 |
| 17' Kit with Scissor Base and Water Ballast | 191435 | 470.25 | 456.00 | 432.75 | 418.50 | 191443 | 682.00 | 661.50 | 627.50 | 607.00 |
| Kit Includes: Hardware with Specified Base, Graphic and Soft Carry Case | | | | | | | | | | USD MSRP (C) |

BEST

Premium Teardrop Sail Sign

| Description | Item # | 1 | 2-5 | 6-11 | 12-24 | Item # | 1 | 2-5 | 6-11 | 12-24 |
|---|--------|--------|--------|--------|--------|--------|--------|--------|--------|--------------|
| 6' Kit with Three-Legged Base and Water Ballast | 190979 | 299.25 | 290.25 | 275.25 | 266.25 | 190978 | 434.25 | 421.25 | 399.50 | 386.50 |
| 8' Kit with Scissor Base and Water Ballast | 190763 | 369.75 | 358.75 | 340.25 | 329.25 | 190762 | 519.50 | 504.00 | 478.00 | 462.50 |
| 11.5' Kit with Scissor Base and Water Ballast | 190765 | 432.00 | 419.00 | 397.25 | 384.50 | 190764 | 633.50 | 614.50 | 582.50 | 564.00 |
| 15' Kit with Scissor Base and Water Ballast | 190767 | 500.50 | 485.50 | 460.50 | 445.50 | 190766 | 746.00 | 723.50 | 686.50 | 664.00 |
| Kit Includes: Hardware with Specified Base, Graphic and Soft Carry Case | | | | | | | | | | USD MSRP (C) |

Premium Razor Sail Sign

| Description | Item # | 1 | 2-5 | 6-11 | 12-24 | Item # | 1 | 2-5 | 6-11 | 12-24 |
|---|--------|--------|--------|--------|--------|--------|--------|--------|--------|--------------|
| 7' Kit with Three-Legged Base and Water Ballast | 190985 | 299.25 | 290.25 | 275.25 | 266.25 | 190984 | 434.25 | 421.25 | 399.50 | 386.50 |
| 9' Kit with Scissor Base and Water Ballast | 190757 | 369.75 | 358.75 | 340.25 | 329.25 | 190756 | 519.50 | 504.00 | 478.00 | 462.50 |
| 13' Kit with Scissor Base and Water Ballast | 190759 | 432.00 | 419.00 | 397.25 | 384.50 | 190758 | 633.50 | 614.50 | 582.50 | 564.00 |
| 17' Kit with Scissor Base and Water Ballast | 190761 | 500.50 | 485.50 | 460.50 | 445.50 | 190760 | 746.00 | 723.50 | 686.50 | 664.00 |
| Kit Includes: Hardware with Specified Base, Graphic and Soft Carry Case | | | | | | | | | | USD MSRP (C) |

Product Size **Finished Graphic Size**
 Sizes Vary View Online Template

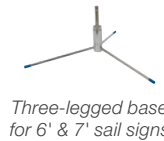
Production Lead Time: 4 days for Value and Premium / 2 days for Streamline from final proof approval

Sail Sign Accessories

| Item # | Description | Product Wt. | 1 | 2-5 | 6-11 | 12-24 |
|--------------|------------------------|-------------|--------|--------|--------|--------|
| 190711 | Heavy-Duty Cross Base | 9 lbs. | 95.65 | 92.80 | 88.00 | 85.15 |
| 190707 | Scissor Base | 7 lbs. | 82.70 | 80.20 | 76.10 | 73.60 |
| 190706 | Ground Spike | 2 lbs. | 54.25 | 52.60 | 49.90 | 48.30 |
| 190714 | 3-Legged Base | 1.25 lbs. | 40.39 | 39.18 | 37.16 | 35.95 |
| 191591 | Value Cross Base | 2.8 lbs. | 39.77 | 38.58 | 36.59 | 35.40 |
| 191590 | Value Spike | 2 lbs. | 39.77 | 38.58 | 36.59 | 35.40 |
| 190708 | Round Water Ballast | 0.5 lb. | 54.75 | 53.10 | 50.35 | 48.75 |
| 190710 | Square Water Ballast | 0.5 lb. | 54.75 | 53.10 | 50.35 | 48.75 |
| 220082 | Universal Product Case | 7 lbs. | 156.10 | 153.00 | 148.30 | 145.20 |
| USD MSRP (C) | | | | | | |



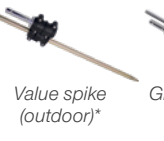
Heavy-duty cross base
(indoor/outdoor)



Three-legged base
for 6' & 7' sail signs
(indoor)



Round water ballast
for 6'-13' sail signs
(indoor/outdoor)



Value spike
(outdoor)*



Ground spike
(outdoor)



Scissor base
(indoor/outdoor)



Value cross base
(indoor/outdoor)*



Square water ballast
for 14.5'-17' sail signs
(indoor/outdoor)



Universal product case
(holds up to three sail sign kits)

Hardware Lead Time: Ships same day when ordered before 2 pm Central

Prices are subject to change; visit our website for the most current pricing.
 Setup fee: \$20.00(G); no setup fee on orders placed via our website. View current graphic templates, assembly videos and instructions on our website.

When choosing a sail sign have you considered...

- How long will your sail sign be displayed?
- Do you need a single- or double-sided display?
- Will you be using this product indoors or outdoors?





NYLON FLAG

Lightweight and fade-resistant, our nylon flags come in a variety of shapes and sizes and are perfect for indoor and outdoor use.

- Constructed of 200 denier nylon
- Standard finishing includes canvas header and brass grommets
- Four rows of lock-stitching provide extra reinforcement on the fly end of rectangular flags
- Single- and double-sided options available
- Custom sizes and finishing available (visit website or call for quote; restrictions may apply)
- Flags used outdoors have a 90-day warranty; flags used indoors have a 1-year warranty



Rectangle Nylon Flag

| Item # | Size | Product Wt. | 1 | 2-5 | 6-11 | 12-24 |
|--------|---------------------------|-------------|--------|--------|--------|--------|
| 304535 | 3' X 5' Single-Sided Flag | 0.5 lb. | 100.70 | 90.60 | 82.60 | 75.50 |
| 304555 | 3' X 5' Double-Sided Flag | 1.5 lbs. | 201.30 | 181.20 | 165.10 | 151.00 |
| 304536 | 4' X 6' Single-Sided Flag | 0.7 lb. | 138.40 | 124.60 | 113.50 | 103.80 |
| 304556 | 4' X 6' Double-Sided Flag | 2.1 lbs. | 277.00 | 249.25 | 227.25 | 207.75 |
| 304537 | 5' X 8' Single-Sided Flag | 1 lb. | 201.30 | 181.20 | 165.10 | 151.00 |
| 304557 | 5' X 8' Double-Sided Flag | 3 lbs. | 402.75 | 362.50 | 330.25 | 302.00 |

USD MSRP (C)

Production Lead Time: 4 days from final proof approval

Single-Sided



Single-sided flags are printed on one side; reverse image shows through the back.

Double-Sided



Double-sided flags have the image printed correct on both sides with a block-out polyester liner.



Double-sided flags feature a lightweight block-out polyester for increased flyability.

FABRIC FLAG

Easy to hang, this flag works with any standard flagpole.

- Best for outdoor use
- Single- and double-sided options available
- Artwork is dye sublimated on super poly knit fabric for single-sided flags and on block-out polyester for double-sided flags
- Custom sizes and finishing available (visit website or call for quote; restrictions may apply)
- Flags used outdoors have a 90-day warranty; flags used indoors have a 1-year warranty



Fabric Flag

| Item # | Description | Product Wt. | 1 | 2-5 | 6-11 | 12-24 |
|--------|---------------------------|-------------|--------|--------|--------|--------|
| 300007 | 3' x 5' Flag Single-Sided | 0.5 lb. | 100.70 | 90.60 | 82.60 | 75.50 |
| 300019 | 3' x 5' Flag Double-Sided | 1.25 lbs. | 201.30 | 181.20 | 165.10 | 151.00 |
| 300011 | 4' x 6' Flag Single-Sided | 1 lb. | 138.40 | 124.60 | 113.50 | 103.80 |
| 300020 | 4' x 6' Flag Double-Sided | 2 lbs. | 277.00 | 249.25 | 227.25 | 207.75 |
| 300015 | 5' x 8' Flag Single-Sided | 1 lb. | 186.30 | 167.70 | 152.80 | 139.70 |
| 300021 | 5' x 8' Flag Double-Sided | 3.25 lbs. | 372.50 | 335.25 | 305.50 | 279.50 |

USD MSRP (C)

Production Lead Time: 4 days from final proof approval

Single-Sided



Single-sided flags are printed on one side; reverse image shows through the back.

Double-Sided



Double-sided flags have the image printed correct on both sides with a block-out polyester.

Prices are subject to change; visit our website for the most current pricing.
Setup fee: \$20.00(G); no setup fee on orders placed via our website. View current graphic templates, assembly videos and instructions on our website.

SPIN 'N WIN PRIZE WHEEL

Give your next trade show or event a creative spin.

- Powder-coated steel legs
- A plastic clicker makes a ticking sound as the wheel spins
- Central disc panel attaches magnetically and remains stationary when the wheel spins
- All graphic panels can be custom printed with your design
- Includes twelve prize panels and central disc panel



Loud clicker attracts attention at noisy events.



Prize panels feature tabs that slide into grooves for easy installation.



Spin 'N Win Prize Wheel

| Item # | Description | 1 | 2-5 | 6-11 | 12-24 |
|--|-------------|--------------|--------|--------|--------|
| 280104 | Kit | 711.50 | 697.50 | 690.00 | 676.00 |
| Kit Includes: Hardware, Graphic Panels and Soft Carry Case | | USD MSRP (C) | | | |

| Product Size | Finished Graphic Size | Product Wt. | Graphic Media |
|------------------------------|-----------------------|-------------|--------------------------------|
| 31.25"W x 40.75"H x 16"-31"D | View Online Template | 16.5 lbs. | Titan™ No-Curl Laminated Media |

Production Lead Time: 2 days from final proof approval



Need a Tabletop Game?

Simply remove the leg extensions to transform this prize wheel into a game suitable for tabletop use.

BAG TOSS GAME

Toss in some friendly competition at your next outdoor event with this customizable game.

- Two game boards clasp together into a single unit that can be easily transported using the convenient carry handle
- Durable plastic construction prevents rust and splinters
- Included rope acts as a distance regulator
- Hinged legs fold out to prop the game boards up at an angle
- 90-day warranty on graphic panels



Bag Toss Game

| Item # | Description | 1 | 2-5 | 6-11 | 12-24 |
|--|-------------|--------------|--------|--------|--------|
| 280310 | Kit | 299.75 | 293.75 | 290.75 | 284.75 |
| Kit Includes: Hardware, 8 Unimprinted Bean Bags and 2 Graphic Panels | | USD MSRP (C) | | | |

| Product Size | Finished Graphic Size | Product Wt. | Media |
|---|-----------------------|-------------|--------------------------------|
| Folded: 21.5"W x 2.75"H x 33.125"D (1) Open: 21.5"W x 10.5"H x 32.75"D | View Online Template | 21.5 lbs. | Titan™ No-Curl Laminated Media |

Production Lead Time: 3 days from final proof approval



Built-in score keepers slide up and down the edges of the board.



Bean bags can be stored inside plastic molded pockets so they don't get left behind.

Add-Ons

Attach our new Bag Toss Buddy to your Bag Toss (sold separately) for access to a bag holder, score keeper and drink holder.

Personalize your bags with custom printed bean bags.

See website for details.

NEW
ADD-ONS



Custom Bean Bags



Bag Toss Buddy

Prices are subject to change; visit our website for the most current pricing.
Setup fee: \$20.00(G); no setup fee on orders placed via our website. View current graphic templates, assembly videos and instructions on our website.

TENTS

When choosing a tent have you considered...

- How frequently will you be using your tent?
- What is the desired impact of your promotional message?
- Would you like to add accessories for additional branding options?



10' tent with full-bleed dye sublimation shown with dye sublimated double-sided full wall (wall sold separately)

GOOD

STANDARD 10' TENT

This popular tent strikes a perfect balance between cost effectiveness and portability.

- 1.125"W square legs comprised of 1 mm pebble powder-coated steel frame
- ABS nylon joints
- Crank-up canopy creates a taut, clean peak
- 10' canopy available in eight stock colors (see below) or with full-bleed dye sublimation



Legs feature plastic push buttons for pinch-free height adjustments.



Easy-Glide Tent Feet allow the tent frame to slide on dirt and grass, preventing the legs from catching. US Patent #D760857

Standard 10' Tent

| Item # | Description | 1 | 2-5 | 6-11 | 12-24 |
|---|--------------------------------------|---------|---------|--------------|---------|
| 240611 | Full-Color Imprint Kit (1 Location) | 649.00 | 635.50 | 622.50 | 603.50 |
| 240612 | Full-Color Imprint Kit (2 Locations) | 731.00 | 715.50 | 700.50 | 679.50 |
| 240614 | Full-Color Imprint Kit (4 Locations) | 895.00 | 875.50 | 856.50 | 831.50 |
| 240618 | Full-Color Imprint Kit (8 Locations) | 1223.00 | 1195.50 | 1168.50 | 1135.50 |
| 240619 | Dye Sublimation Kit | 1406.00 | 1378.50 | 1351.50 | 1318.50 |
| Kit Includes: Tent Frame, Canopy, Stake Kit and Soft Carry Case with Wheels | | | | USD MSRP (C) | |

| Product Size | Imprint Graphic Size | Dye Sub Graphic Size | Product Wt. |
|----------------------------------|--|----------------------|-------------|
| 118.5"W x 127.5"-140"H x 118.5"D | Peak: 44"W x 24"H; Valance: 60"W x 8"H | View Online Template | 51.5 lbs. |

Production Lead Time: 4 days for full-color imprint / 7 days for dye sublimation from final proof approval

Tent Features & Benefits



Sets up in minutes.



Adjust tent height with the push of a button.



Crank-up canopy creates a taut, clean peak.



Secure tent to the ground with stake kit.



Collapses easily to store in soft case with wheels.

10' Tent Stock Canopy Colors



Prices are subject to change; visit our website for the most current pricing.
Setup fee: \$20.00(G); no setup fee on orders placed via our website. *View current graphic templates, assembly videos and instructions on our website.*

BETTER

DELUXE 8' & 10' TENTS

Designed for frequent use, these tent features a stronger, heavier steel frame.

- 1.25"W square legs comprised of 1 mm pebble powder-coated steel frame
- ABS glass-filled nylon joints
- Crank-up canopy creates a taut, clean peak
- 10' canopy available in eight stock colors (see page 16) or with full-bleed dye sublimation
- 8' canopy available with full-bleed dye sublimation only



Deluxe 8' Tent

| Item # | Description | 1 | 2-5 | 6-11 | 12-24 |
|---|---------------------|--------------|---------|---------|---------|
| 240829 | Dye Sublimation Kit | 1463.00 | 1434.00 | 1404.00 | 1361.00 |
| Kit Includes: Tent Frame, Canopy, Stake Kit and Soft Carry Case with Wheels | | USD MSRP (C) | | | |

Product Size 96"W x 117.5"-130"H x 96"D
Dye Sub Graphic Size View Online Template
Product Wt. 58 lbs.

Deluxe 10' Tent

| Item # | Description | 1 | 2-5 | 6-11 | 12-24 |
|---|--------------------------------------|--------------|---------|---------|---------|
| 240621 | Full-Color Imprint Kit (1 Location) | 786.00 | 770.00 | 754.00 | 730.50 |
| 240622 | Full-Color Imprint Kit (2 Locations) | 868.00 | 850.00 | 832.00 | 806.50 |
| 240624 | Full-Color Imprint Kit (4 Locations) | 1032.00 | 1010.00 | 988.00 | 958.50 |
| 240628 | Full-Color Imprint Kit (8 Locations) | 1360.00 | 1330.00 | 1300.00 | 1262.50 |
| 240629 | Dye Sublimation Kit | 1543.00 | 1513.00 | 1483.00 | 1445.50 |
| Kit Includes: Tent Frame, Canopy, Stake Kit and Soft Carry Case with Wheels | | USD MSRP (C) | | | |

Product Size 118.5"W x 127"-139.5"H x 118.5"D
Imprint Graphic Size Peak: 44"W x 24"H; Valance: 60"W x 8"H
Dye Sub Graphic Size View Online Template
Product Wt. 63.5 lbs.

Production Lead Time: 4 days for full-color imprint / 7 days for dye sublimation from final proof approval



BEST

PREMIUM 10' & 20' TENTS

These Premium tents feature a strong aluminum frame with sturdy hexagon-shaped legs.

- 1.75" diameter hexagon legs comprised of 0.8 mm anodized aluminum frame
- ABS glass-filled nylon joints
- Crank-up canopy creates a taut, clean peak
- Stake kit and wheeled carry case included
- 10' canopy available in eight stock colors (see page 16) or with full-bleed dye sublimation
- 20' canopy available in white, cherry, cobalt, navy, black or with full-bleed dye sublimation



Premium 10' Tent

| Item # | Description | 1 | 2-5 | 6-11 | 12-24 |
|---|--------------------------------------|--------------|---------|---------|---------|
| 240631 | Full-Color Imprint Kit (1 Location) | 924.00 | 905.00 | 886.50 | 859.00 |
| 240632 | Full-Color Imprint Kit (2 Locations) | 1006.00 | 985.00 | 964.50 | 935.00 |
| 240634 | Full-Color Imprint Kit (4 Locations) | 1170.00 | 1145.00 | 1120.50 | 1087.00 |
| 240638 | Full-Color Imprint Kit (8 Locations) | 1498.00 | 1465.00 | 1432.50 | 1391.00 |
| 240639 | Dye Sublimation Kit | 1681.00 | 1648.00 | 1615.50 | 1574.00 |
| Kit Includes: Tent Frame, Canopy, Stake Kit and Soft Carry Case with Wheels | | USD MSRP (C) | | | |

Premium 10' x 20' Tent

| Item # | Description | 1 | 2-5 | 6-11 | 12-24 |
|---|---------------------------------------|--------------|---------|---------|---------|
| 240571 | Full-Color Imprint Kit (1 Location) | 1187.00 | 1163.00 | 1139.00 | 1104.00 |
| 240572 | Full-Color Imprint Kit (2 Locations) | 1269.00 | 1243.00 | 1217.00 | 1180.00 |
| 240574 | Full-Color Imprint Kit (4 Locations) | 1433.00 | 1403.00 | 1373.00 | 1332.00 |
| 240578 | Full-Color Imprint Kit (8 Locations) | 1761.00 | 1723.00 | 1685.00 | 1636.00 |
| 240582 | Full-Color Imprint Kit (12 Locations) | 2089.00 | 2043.00 | 1997.00 | 1940.00 |
| 240583 | Dye Sublimation Kit | 2300.00 | 2254.00 | 2208.00 | 2151.00 |
| Kit Includes: Tent Frame, Canopy, Stake Kit and Soft Carry Case with Wheels | | USD MSRP (C) | | | |

Description **Product Size** **Imprint Graphic Size** **Dye Sub Graphic Size** **Product Wt.**
 10' 118"W x 126.75"-139.25"H x 118"D Peak: 44"W x 24"H; Valance: 60"W x 8"H View Online Template 52 lbs.
 10' x 20' 234.5"W x 126.75"-139.25"H x 118.25"D Peak: 44"W x 24"H; Valance: 60"W x 8"H View Online Template 92 lbs.

Production Lead Time: 4 days for full-color imprint / 7 days for dye sublimation from final proof approval





Signicade
Deluxe



Signicade

One Signboard, Two Sides.

Double-sided signboards have your artwork printed on both sides, making each signboard reversible.



Double-sided signboards available for Signicade Deluxe

SIGNICADE® AND SIGNICADE® DELUXE
A-FRAMES

With different sizes to choose from, these A-frames fit a variety of spaces.

- Maintenance-free and weather-resistant
- Folds flat for transport or storage



Signicade Deluxe A-Frame

| Item # | Description | 1 | 2-5 | 6-11 | 12-24 |
|--|------------------|--------|--------|--------------|--------|
| 210121 | Single-Sided Kit | 238.00 | 230.60 | 219.90 | 214.40 |
| 210122 | Double-Sided Kit | 254.50 | 247.25 | 235.50 | 230.00 |
| Kit Includes: Black or White Hardware and 2 Single- or Double-Sided Graphics | | | | USD MSRP (C) | |

| Product Size | Finished Graphic Size | Product Wt. | Media |
|----------------------|-----------------------|-------------|-------------------------|
| 27"W x 38.5"H x 19"D | 24"W x 36"H | 21 lbs. | 4 mm Corrugated Plastic |

FRAME COLORS  Black  White

Production Lead Time: 2 days from final proof approval

Signicade A-Frame

| Item # | Description | 1 | 2-5 | 6-11 | 12-24 |
|---|-------------|--------|--------|--------------|--------|
| 210133 | Kit | 216.60 | 210.10 | 200.20 | 195.30 |
| Kit Includes: Orange, Yellow or White Hardware, 2 Single-Sided Graphics and 2 24" Strips of Hook and Loop | | | | USD MSRP (C) | |

| Product Size | Finished Graphic Size | Product Wt. | Media |
|----------------------|-----------------------|-------------|-------------------------|
| 24.5"W x 42"H x 31"D | 24"W x 36"H | 20 lbs. | 4 mm Corrugated Plastic |

FRAME COLORS  Orange  Yellow  White

Production Lead Time: 2 days from final proof approval

Features & Benefits



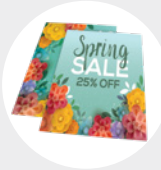
Plastic base won't rust, making it great for outdoor use.



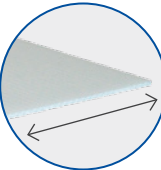
Convenient molded handle makes it easy to move.



Frames can be filled with water or sand for stability.



Signboards are easy to swap out to accommodate frequent message changes.



Stakes (sold separately) slide into fluted openings along the width of the signboard.

Corrugated Plastic Sign

| Item # | Description | 1 | 2-5 | 6-11 | 12-24 |
|--------|----------------------------|-------|-------|--------------|-------|
| 271110 | 36"W x 24"H - Single-Sided | 27.30 | 26.50 | 25.65 | 24.85 |
| 271111 | 36"W x 24"H - Double-Sided | 35.85 | 34.80 | 33.70 | 32.65 |
| 271113 | 24"W x 18"H - Single-Sided | 18.10 | 17.60 | 17.05 | 16.50 |
| 271114 | 24"W x 18"H - Double-Sided | 23.65 | 22.95 | 22.25 | 21.55 |
| | | | | USD MSRP (C) | |

Production Lead Time: 2 days from final proof approval

CORRUGATED PLASTIC SIGN

Great for use on lawns, this sign gives you a simple, inexpensive way to get your message noticed.

- Constructed of 4 mm corrugated plastic
- Full-color artwork can be printed on one or both sides
- Custom sizes and shapes available (call for quote; restrictions may apply)
- Corrugated plastic can be recycled after use



STANDARD STEP STAKE

- Installation is quick and easy

Standard Step Stake

| Item # | Description | 1-10 | 11-20 | 21-30 | 31+ |
|--------|---------------------|------|-------|--------------|------|
| 381501 | Standard Step Stake | 2.80 | 2.75 | 2.65 | 2.60 |
| | | | | USD MSRP (C) | |

Hardware Lead Time: Ships same day when ordered before 2 pm Central

Prices are subject to change; visit our website for the most current pricing.

Setup fee: \$20.00(G); no setup fee on orders placed via our website. View current graphic templates, assembly videos and instructions on our website.

STORM MAT

This water-absorbent mat makes a great first impression.

- Absorbs up to 1.5 gallons of liquid per square yard
- Easy to clean using a vacuum, steam cleaner or hose
- UV-resistant and treated with Stainstopper™
- Mat sizes are not exact; allow 3-5% size variance
- Not eligible for Rush Service

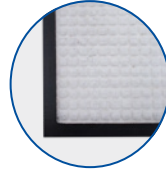


Storm Mat

| Item # | Description | Product Wt. | 1 | 2-5 | 6-10 | 11-25 |
|--------------|-------------|-------------|--------|--------|--------|--------|
| 259030 | 2' x 3' | 4 lbs. | 402.50 | 330.00 | 285.75 | 273.75 |
| 259031 | 3' x 5' | 10 lbs. | 458.25 | 375.75 | 325.25 | 311.50 |
| 259032 | 4' x 6' | 14 lbs. | 581.00 | 476.50 | 412.50 | 395.00 |
| USD MSRP (C) | | | | | | |

Light colors show dirt easily and are not recommended for background colors. Item has limited number of available colors (56). We cannot guarantee color matching. Test strip/match print/test grid not available.

Production Lead Time: 7 days from final proof approval



Constructed of 65 mil nitrile rubber with needle-punched polyester carpet.



GALLERY PRINTS AND FLOATING GALLERY PRINTS

Turn your favorite photos and memories into decoration pieces.

- Print is gallery-wrapped around frame to maximize graphic space
- Prints come with a finished back; hanging hardware is included
- Floating Gallery Prints allow the print to pop within a black frame
- Prints can be displayed vertically or horizontally
- Artwork is printed with UV protected ink on durable canvas fabric
- Wood frames are sourced from sustainable Appalachian hardwood lumber



Gallery Prints & Floating Gallery Prints

| Item # | Description | Product Wt. | 1 | 2-5 | 6-11 | 12-24 |
|--------------|----------------------------------|-------------|--------|--------|--------|--------|
| 325401 | 11" x 14" Gallery Print | 1.5 lbs. | 88.10 | 85.45 | 81.95 | 79.30 |
| 325411 | 11" x 14" Floating Gallery Print | 3 lbs. | 144.80 | 140.50 | 134.70 | 130.30 |
| 325402 | 12" x 12" Gallery Print | 1.5 lbs. | 94.40 | 91.55 | 87.80 | 84.95 |
| 325412 | 12" x 12" Floating Gallery Print | 3 lbs. | 163.60 | 158.70 | 152.10 | 147.20 |
| 325403 | 16" x 20" Gallery Print | 2.4 lbs. | 113.30 | 109.90 | 105.40 | 102.00 |
| 325413 | 16" x 20" Floating Gallery Print | 4.8 lbs. | 201.40 | 195.40 | 187.30 | 181.30 |
| 325405 | 20" x 30" Gallery Print | 3.4 lbs. | 151.00 | 146.50 | 140.40 | 135.90 |
| 325415 | 20" x 30" Floating Gallery Print | 6.2 lbs. | 276.75 | 268.50 | 257.50 | 249.00 |
| USD MSRP (C) | | | | | | |

Production Lead Time: 3 days from final proof approval



11" x 14" Floating Gallery Print



16" x 20" Gallery Print

ACRYLIC PRINTS

Create eye-catching decor with modern acrylic prints that offer sharp image detail and radiant colors.

- High quality print on .118" acrylic
- Polished edge brings vibrancy and depth to the print
- Print is single-sided
- No assembly required



Acrylic Prints

| Item # | Description | Product Wt. | 1 | 2-5 | 6-11 | 12-24 |
|--------------|-------------|-------------|--------|--------|--------|--------|
| 264462 | 11" x 14" | 1.27 lbs. | 56.65 | 54.95 | 54.40 | 53.80 |
| 264463 | 12" x 12" | 1.2 lbs. | 60.40 | 58.60 | 58.00 | 57.40 |
| 264465 | 16" x 20" | 3.62 lbs. | 100.70 | 97.70 | 96.70 | 95.70 |
| 264467 | 24" x 36" | 7.4 lbs. | 188.80 | 183.10 | 181.20 | 179.40 |
| USD MSRP (C) | | | | | | |

Production Lead Time: 2 days from final proof approval



Hidden Shadow Mount hardware lets you hang your art on the wall like a picture frame.



Acrylic prints provide additional depth to images.



Prices are subject to change; visit our website for the most current pricing.

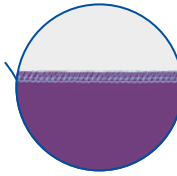
Setup fee: \$20.00(G); no setup fee on orders placed via our website. View current graphic templates, assembly videos and instructions on our website.

When choosing a floor display have you considered...

- What is the size of your space?
- How will this display be transported?
- Will you be changing out your look and message?



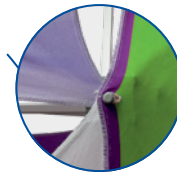
12-Quad Classic



Graphic panels are finished with white stitching.



Shelf has rounded corners and supports up to 15 lbs.



Deluxe GeoMetrix pegs hold up to six panels each.

GOOD

DELUXE GEOMETRIX DISPLAY

A strong, durable frame supports multiple graphic panels and shelves so you have countless options for setting up a creative display.

- Setup and teardown can be done in seconds
- Artwork is dye sublimated on polyester double knit
- Aluminum frame with nylon plastic hubs
- US Patent #9214104



Deluxe GeoMetrix Displays

| Item # | Description | 1 | 2-5 | 6-11 | 12-24 |
|--|---------------------|---------|---------|--------------|---------|
| 342010 | 3-Quad Tower Kit | 780.00 | 765.00 | 750.00 | 735.00 |
| 342004 | 9-Quad Header Kit | 1710.00 | 1670.00 | 1635.00 | 1595.00 |
| 342000 | 12-Quad Classic Kit | 2020.00 | 1980.00 | 1945.00 | 1905.00 |
| Kit Includes: Frame, Graphic Panels, Internal Shelf(s) and Soft Carry Case | | | | USD MSRP (C) | |
| Shelves do not fit in provided soft carry case. | | | | | |
| See website for shelf soft carry case. | | | | | |

| Description | Product Size | Finished Graphic Size | Product Wt. | Media |
|-----------------|----------------------------|-----------------------|-------------|-----------------------|
| 3-Quad Tower | 31.25" W x 89.5" H x 13" D | View Online Template | 11 lbs. | Polyester Double Knit |
| 9-Quad Header | 90" W x 89.5" H x 13" D | View Online Template | 27 lbs. | Polyester Double Knit |
| 12-Quad Classic | 118" W x 89.5" H x 13" D | View Online Template | 30.5 lbs. | Polyester Double Knit |

Production Lead Time: 4 days from final proof approval



3-Quad Tower



9-Quad Header



Deluxe GeoMetrix Internal Shelves

US Patent #D804,228

| Item # | Description | 1 | 2-5 | 6-11 | 12-24 |
|-----------------------------------|----------------------|--------------|--------|--------|--------|
| 338050 | Gray Internal Shelf | 139.00 | 136.00 | 132.00 | 128.00 |
| 338068 | Clear Internal Shelf | 149.00 | 145.00 | 140.00 | 136.00 |
| Each shelf supports up to 15 lbs. | | USD MSRP (C) | | | |



Add-Ons

Ultimate LED Double Light Kit

| Item # | Description | 1 | 2-5 | 6-11 | 12-24 |
|--|-------------|--------------|--------|--------|--------|
| 150121 | Kit | 339.75 | 329.50 | 319.25 | 309.25 |
| Kit Includes: 2 Lights, 2 Clamps, 2 Clips, USB Adapter and Soft Carry Case | | USD MSRP (C) | | | |

Hardware Lead Time: Ships same day when ordered before 2 pm Central



Prices are subject to change; visit our website for the most current pricing.

Setup fee: \$20.00(G); no setup fee on orders placed via our website. View current graphic templates, assembly videos and instructions on our website.



Compatible displays can be hinged together using the EuroFit Connector. US Patent #9637963. Available online.

BETTER

EUROFIT WALLS

The ever popular EuroFit line offers many elegant and versatile display solutions.

- Artwork is vibrantly dye sublimated on polyester knit
- Hinge together separate EuroFit displays with the EuroFit Connector
- Create modular layouts with limitless possibilities



Get a green screen compatible backdrop printed as PMS 354C; available online.



Eco-friendly media is made up of 100% recycled materials; available online.

90"H EuroFit Straight Wall

| Item # | Description | 1 | 2-5 | 6-11 | 12-24 |
|--------|-------------|---------|---------|---------|---------|
| 256215 | 3'W Kit | 418.00 | 405.00 | 393.00 | 380.00 |
| 256233 | 5'W Kit | 630.00 | 612.00 | 592.00 | 574.00 |
| 255180 | 8'W Kit | 957.00 | 928.00 | 899.00 | 871.00 |
| 256251 | 10'W Kit | 1680.00 | 1645.00 | 1595.00 | 1565.00 |
| 256427 | 20'W Kit | 3305.00 | 3265.00 | 3145.00 | 3105.00 |

Kit Includes: Hardware, Graphic Cover, EuroFit Connector and Soft Carry Case
20' Display Includes: Hardware, Graphic Cover, 2 EuroFit Connectors and 2 Soft Carry Cases

USD MSRP (C)

| Description | Product Size | Finished Graphic Size | Product Wt. | Media |
|-------------|--------------------------|-----------------------|-------------|----------------|
| 3'W | 36.5"W x 91.25"H x 19"D | View Online Template | 10.3 lbs. | Polyester Knit |
| 5'W | 60.5"W x 91.25"H x 19"D | View Online Template | 12.6 lbs. | Polyester Knit |
| 8'W | 96.5"W x 91.25"H x 19"D | View Online Template | 18 lbs. | Polyester Knit |
| 10'W | 115.5"W x 91.25"H x 19"D | View Online Template | 21.25 lbs. | Polyester Knit |
| 20'W | 231"W x 91.25"H x 19"D | View Online Template | 42.75 lbs. | Polyester Knit |

72"H EuroFit Straight Wall

| Item # | Description | 1 | 2-5 | 6-11 | 12-24 |
|--------|-------------|--------|--------|--------|--------|
| 256203 | 2'W Kit | 262.00 | 254.00 | 247.00 | 238.00 |
| 256212 | 3'W Kit | 346.00 | 332.00 | 319.00 | 299.00 |

Kit Includes: Hardware, Graphic Cover, EuroFit Connector and Soft Carry Case

USD MSRP (C)

| Description | Product Size | Finished Graphic Size | Product Wt. | Media |
|-------------|----------------------|-----------------------|-------------|----------------|
| 2'W | 24.5"W x 72"H x 19"D | View Online Template | 7.5 lbs. | Polyester Knit |
| 3'W | 36.5"W x 72"H x 19"D | View Online Template | 8.25 lbs. | Polyester Knit |

Production Lead Time: 4 days from final proof approval

Prices are subject to change; visit our website for the most current pricing.

Setup fee: \$20.00(G); no setup fee on orders placed via our website. View current graphic templates, assembly videos and instructions on our website.



10' with face graphic panel

8' with wrap graphic panel

BEST

SPLASH DISPLAY

This pop-up display transforms from a compact unit to an impressive backdrop in minutes.

- Graphic panels are available in polyester knit and block-out fabric
- Hook-and-loop fasteners make graphic panel installation simple
- Aluminum frame with nylon plastic hubs
- US Patent #9214104



8' Straight Splash

| Item # | Description | Product Wt. | 1 | 2-5 | 6-11 | 12-24 |
|--|------------------------------|-------------|---------|---------|---------|--------------|
| 341004 | 8' Polyester Knit Face Kit | 19.25 lbs. | 1225.00 | 1200.00 | 1175.00 | 1155.00 |
| 342208 | 8' Block-Out Fabric Face Kit | 20 lbs. | 1325.00 | 1300.00 | 1275.00 | 1250.00 |
| 341005 | 8' Polyester Knit Wrap Kit | 20 lbs. | 1470.00 | 1445.00 | 1420.00 | 1400.00 |
| 342209 | 8' Block-Out Fabric Wrap Kit | 20.8 lbs. | 1575.00 | 1550.00 | 1525.00 | 1500.00 |
| Kit Includes: Frame, Graphic Panel and Soft Carry Case | | | | | | USD MSRP (C) |

Product Size 90"W x 89.5"H x 12.25"D
Finished Graphic Size View Online Template

10' Straight Splash

| Item # | Description | Product Wt. | 1 | 2-5 | 6-11 | 12-24 |
|--|-------------------------------|-------------|---------|---------|---------|--------------|
| 341008 | 10' Polyester Knit Face Kit | 23.75 lbs. | 1470.00 | 1445.00 | 1420.00 | 1400.00 |
| 342212 | 10' Block-Out Fabric Face Kit | 24.5 lbs. | 1575.00 | 1550.00 | 1525.00 | 1500.00 |
| 341009 | 10' Polyester Knit Wrap Kit | 24.75 lbs. | 1715.00 | 1690.00 | 1665.00 | 1645.00 |
| 342213 | 10' Block-Out Fabric Wrap Kit | 26 lbs. | 1810.00 | 1785.00 | 1760.00 | 1735.00 |
| Kit Includes: Frame, Graphic Panel and Soft Carry Case | | | | | | USD MSRP (C) |

Product Size 119"W x 89.5"H x 12.25"D
Finished Graphic Size View Online Template

Production Lead Time: 4 days from final proof approval

Kit Options



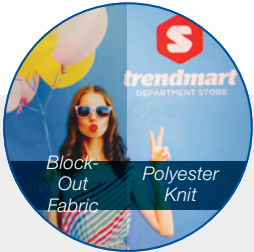
Face Graphic Kit
Graphic panel covers the front of the frame.



Wrap Graphic Kit
Graphic panel covers the front and two sides of the frame. Back of the frame is not covered.

Block-Out Fabric

Block-out fabric is designed to prevent light from showing through the display. It is a good option for brightly lit areas.



MICRO GEOMETRIX DISPLAY

Create a variety of multi-dimensional displays in seconds with the Micro GeoMetrix.

- Lightweight aluminum frame with plastic hubs
- Artwork is dye sublimated on polyester double knit

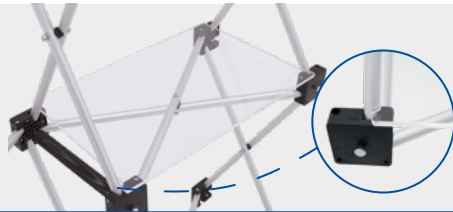


Micro GeoMetrix Classic

| Item # | Description | 1 | 2-5 | 6-11 | 12-24 |
|--|-------------|--------|--------|--------------|--------|
| 337207 | Kit | 516.00 | 495.50 | 480.00 | 454.00 |
| Kit Includes: Nine-Quad Square Frame, 5 Graphic Panels and Soft Carry Case | | | | USD MSRP (C) | |

| Product Size | Finished Graphic Size | Product Wt. | Media |
|-------------------------|--------------------------------------|-------------|-----------------------|
| 46"W x 46.75"H x 9.62"D | View Online Template | 9.25 lbs. | Polyester Double Knit |

Production Lead Time: 4 days from final proof approval



Add-On

Micro GeoMetrix Shelf

| Item # | Description | 1 | 2-5 | 6-11 | 12-24 |
|---|-------------------------------|-------|-------|--------------|-------|
| 338069 | Straight Internal Clear Shelf | 45.43 | 43.61 | 42.25 | 39.98 |
| Each shelf supports up to 5 lbs. | | | | USD MSRP (C) | |
| Compatible with frames equipped with locking arms only. | | | | | |

Hardware Lead Time: Ships same day when ordered before 2 pm Central

Shown on a 6' Standard throw shown in navy blue and 57" LazerLine runner shown in mulberry (throw and runner sold separately)



MINI TABLETOP DISPLAYS

These displays fit into small areas, making them perfect for tables and countertops.

- Lightweight and portable
- Warranties range between six months and one year (see website for details)
- Kit contents vary (see website for details)

Mini Retractors

| Item # | Description | 1 | 2-5 | 6-11 | 12-24 |
|--------|--|--------|--------|--------------|--------|
| 262014 | Deluxe Mini Kit | 75.55 | 72.55 | 70.25 | 66.50 |
| 210242 | Large Mini Promo Kit | 65.40 | 62.80 | 60.80 | 57.55 |
| 261130 | 24" Economy Tabletop No-Curl Hybrid Media Kit | 178.30 | 167.60 | 160.50 | 149.80 |
| 262160 | 24" Economy Tabletop No-Curl Opaque Fabric Kit | 178.30 | 167.60 | 160.50 | 149.80 |
| | | | | USD MSRP (C) | |

| Product Size | Finished Graphic Size |
|--------------|--------------------------------------|
| Sizes Vary | View Online Template |

Production Lead Time: 2-4 days from final proof approval

Hardware Lead Time: Ships same day when ordered before 2 pm Central

Mini Displays

| Item # | Description | 1 | 2-5 | 6-11 | 12-24 |
|--|------------------------------------|-------|-------|--------------|-------|
| 280370 | EuroFit Mini Kit | 97.30 | 93.40 | 90.45 | 85.65 |
| 210032 | Mini X Banner Display Kit | 37.62 | 36.12 | 34.99 | 33.11 |
| 304757 | Base for One 4" x 6" Stick Flag | 2.45 | 2.25 | 2.11 | 1.96 |
| 304758 | Base for Two 4" x 6" Stick Flags | 3.47 | 3.19 | 2.98 | 2.78 |
| 304759 | Base for Three 4" x 6" Stick Flags | 3.47 | 3.19 | 2.98 | 2.78 |
| Stick Flags sold separately (see website). | | | | USD MSRP (C) | |

Prices are subject to change; visit our website for the most current pricing.
Setup fee: \$20.00(G); no setup fee on orders placed via our website. [View current graphic templates, assembly videos and instructions on our website.](#)

VINYL & FABRIC BANNERS

NO SETUP FEES

ALL YEAR

PROMO CODE **S23BFSU12**



- NO setup fees!*
- Wide variety of materials.
- Available for delivery in as little as two days.

See pages 58-63 in our 2023 Product Guide for details.

**Must use promo code when ordering*