

# DISPLAY SOLUTIONS

PROMOTIONS • EVENTS • TRADE SHOWS



## BEST SELLERS 2016

# TABLE COVERS

Instantly update your table's presence with an imprinted table cover to complement your brand.

- Display your items on the top of the table, while keeping materials and supplies out of view underneath
- Multiple imprinting methods available to accommodate simple and complex artwork
- Table covers are offered in a variety of colors, sizes, styles and materials
- Washable polyester fabric is flame retardant and wrinkle resistant
- 24 & 48 Hour Quick Ship available on select items; see website for details

## Suggested Product Uses

- Trade Shows
- Weddings
- Event Promotions
- Lobbies
- In-Store Samples
- Charity Events



6' Economy with Full-Color Thermal Imprint



The three-sided table throw with 9" overhang is perfect for sitting behind.

### ECONOMY TABLE THROWS

**Sit comfortably behind your table with this, budget-friendly, open back table throw.**

Comprised of polyester poplin fabric with draped corners, this throw is machine washable for repeat use. Fabric is FR rated (flame retardant treated) for exhibit halls.

#### Economy Throws

Item #	Description	1	2-5	6-11	12-24
106002	6' Full-Color Thermal Imprint	185.00	165.00	155.00	135.00
106014	8' Full-Color Thermal Imprint	205.00	185.00	165.00	155.00
Stock fabric colors imprinted with any color(s)					
106008	6' Front Panel Only Dye Sub	260.00	225.00	215.00	200.00
106020	8' Front Panel Only Dye Sub	275.00	240.00	230.00	215.00
White only fabric dyed with any color(s)					
106010	6' Full-Bleed Dye Sub	295.00	270.00	250.00	235.00
106022	8' Full-Bleed Dye Sub	320.00	285.00	270.00	250.00
Fabric dyed with any color(s)					

Description	Table Size	Thermal/Front Panel Graphic Size	Full-Bleed Graphic Size
6' Throws	72"W x 29"H x 30"D	50"W x 17"H	View Online Template
8' Throws	96"W x 29"H x 30"D	50"W x 17"H	View Online Template
Set-up fee: \$30.00(G)			
Production Lead Time: 3 days from final proof approval			



6' Standard with Full-Bleed Dye Sublimation

### STANDARD TABLE THROWS

**This popular table throw offers a simple way to get your message noticed.** The fabric covers all four sides of your table for a cohesive look and can be blank or imprinted. The high-quality polyester poplin is machine washable and is wrinkle resistant, keeping maintenance to a minimum. Fabric is FR rated (flame retardant treated) for exhibit halls.

#### Standard Throws

Item #	Description	1	2-5	6-11	12-24
109002	6' Full-Color Thermal Imprint	205.00	175.00	165.00	155.00
109014	8' Full-Color Thermal Imprint	225.00	195.00	185.00	165.00
Stock fabric colors imprinted with any color(s)					
109008	6' Front Panel Only Dye Sub	285.00	250.00	235.00	215.00
109020	8' Front Panel Only Dye Sub	300.00	265.00	250.00	230.00
White only fabric dyed with any color(s)					
109010	6' Full-Bleed Dye Sub	330.00	295.00	280.00	260.00
109022	8' Full-Bleed Dye Sub	350.00	315.00	300.00	280.00
Fabric dyed with any color(s)					

Description	Table Size	Thermal/Front Panel Graphic Size	Full-Bleed Graphic Size
6' Throws	72"W x 29"H x 30"D	50"W x 17"H	View Online Template
8' Throws	96"W x 29"H x 30"D	50"W x 17"H	View Online Template
Set-up fee: \$30.00(G)			
Production Lead Time: 3 days from final proof approval			



#### THERMAL IMPRINTING

A digital print process in which the graphic is printed onto thermal transfer media and adhered to the fabric through pressure and heat.



#### DYE SUBLIMATION IMPRINTING

A printing process that uses heat to transfer ink to white fabric: this allows full-color graphics to permeate the fabric and become part of the fibers.





Promote new services and resources and generate name recognition.



Perfect for retail promotions and displaying products.

## ADD A 2ND IMPRINT LOCATION!



Maximize your brand visibility by adding an additional thermal imprint to the top or back of your throw! Imprint up to 2 locations on any Standard, Convertible or Economy Throws and Standard Runners, view website for more information.

## CONVERTIBLE TABLE THROWS

### One table throw to cover the two most

**common table sizes!** Wrinkle resistant polyester poplin fabric covers all four sides of your table. It features hook and loop attachments that make it easy to switch between an 8' draped table throw and a 6' fitted table throw. Fabric is FR rated (flame retardant treated) for exhibit halls.

#### Convertible Throws

Item #	Description	1	2-5	6-11	12-24
104014	6' 6' Full-Color Thermal Imprint	260.00	230.00	220.00	210.00
Stock fabric colors imprinted with any color(s)					
104020	6' 6' Front Panel Only Dye Sub	310.00	285.00	275.00	260.00
White only fabric dyed with any color(s)					
104022	6' 6' Full-Bleed Dye Sub	355.00	320.00	310.00	295.00
Fabric dyed with any color(s)					

Table Size	Thermal/Front Panel Graphic Size	Full-Bleed Graphic Size
72" 96" W x 29" H x 30" D	50" W x 17" H	View Online Template
Set-up fee: \$30.00(G)		
Production Lead Time: 3 days from final proof approval		

8' Convertible with Full-Bleed Dye Sublimation transforms into a 6' fitted



8' Convertible with Full-Bleed Dye Sublimation

## EASY TO CONVERT!



Fold and wrap excess fabric around the sides.



Attach corner to hook and loop on back.

## FITTED TABLE THROWS

### Brand your event with these fitted, full coverage throws that provide a defined shape.

This four-sided polyester poplin throw can be used with the ShowGoer 6' Folding table found on page 31, as well as any standard 8' table. Fabric is FR rated (flame retardant treated) for exhibit halls.

#### Fitted Throws

Item #	Description	1	2-5	6-11	12-24
107002	6' Full-Color Thermal Imprint	225.00	195.00	185.00	175.00
107014	8' Full-Color Thermal Imprint	245.00	215.00	205.00	185.00
Stock fabric colors imprinted with any color(s)					
107008	6' Front Panel Only Dye Sub	265.00	240.00	235.00	210.00
107020	8' Front Panel Only Dye Sub	310.00	275.00	265.00	250.00
White only fabric dyed with any color(s)					
107010	6' Full-Bleed Dye Sub	330.00	305.00	295.00	280.00
107022	8' Full-Bleed Dye Sub	350.00	325.00	305.00	290.00
Fabric dyed with any color(s)					

Description	Table Size	Thermal/Front Panel Graphic Size	Full-Bleed Graphic Size
6' Throws	72" W x 29" H x 30" D	50" W x 17" H	View Online Template
8' Throws	96" W x 29" H x 30" D	50" W x 17" H	View Online Template
Set-up fee: \$30.00(G)			
Production Lead Time: 3 days from final proof approval			



6' Fitted with Full-Bleed Dye Sublimation



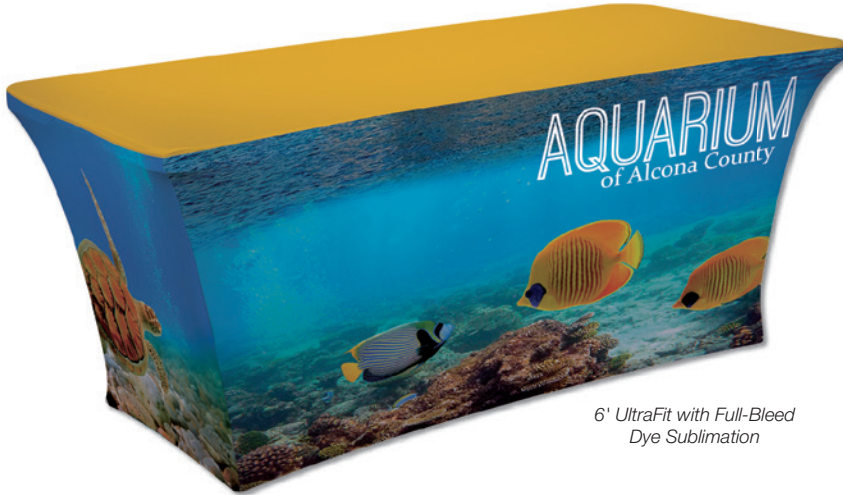
Capture your customer's attention with vibrant graphics and unique shapes.



A must-have for product promotions.



A quick and easy way to brand any event or special occasion.



6' UltraFit with Full-Bleed Dye Sublimation



Zippered back for enclosed storage area

## ULTRAFIT TABLE THROWS

**These form-fitting throws offer a smooth display surface for promoting your brand.**

The seamless two-way poly-stretch fabric fits snug over tables eliminating wrinkles. Fabric is FR rated (flame retardant treated) for exhibit halls.

### UltraFit Table Throws

Item #	Description	1	2-5	6-11	12-24
114001	6' Front Panel Only Dye Sub	400.00	380.00	370.00	350.00
114004	8' Front Panel Only Dye Sub	450.00	430.00	410.00	400.00
White only fabric dyed with any color(s)					
114002	6' Full-Bleed Dye Sub	460.00	440.00	430.00	410.00
114005	8' Full-Bleed Dye Sub	510.00	490.00	469.00	459.00
Fabric dyed with any color(s)					

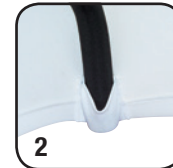
(C)

Description	Table Size	Front Only Graphic Size	Full-Bleed Graphic Size
6' UltraFit	72"W x 29"H x 29.75"D	50"W x 17"H	View Online Template
8' UltraFit	96"W x 29"H x 30"D	50"W x 17"H	View Online Template
Set-up fee: \$30.00(G)			
Production Lead Time: 3 days from final proof approval			

### Easy as 1-2-3!



Find reinforced sleeves located at each throw corner.



Slip each leg within sleeve and pull throw taut.



Zip shut to create a snug fit.



## PREMIUM TABLE THROWS

**Leave your steamer at home with this virtually wrinkle-free throw.**

This two-way poly-stretch fabric is smooth to the touch, presenting an upscale look. The nearly-opaque material eliminates shine-through, making it perfect for showing off full-color logos and high-resolution photography at any event. Fabric is FR rated (flame retardant treated) for exhibit halls.

### Premium Throws

Item #	Description	1	2-5	6-11	12-24
109070	6' Full-Bleed Dye Sub	435.00	390.00	365.00	340.00
109071	8' Full-Bleed Dye Sub	460.00	410.00	385.00	360.00
Fabric dyed with any color(s)					

(C)

Description	Table Size	Thermal/Front Panel Graphic Size	Full-Bleed Graphic Size
6' Throws	72"W x 29"H x 30"D	50"W x 17"H	View Online Template
8' Throws	96"W x 29"H x 30"D	50"W x 17"H	View Online Template
Set-up fee: \$30.00(G)			
Production Lead Time: 3 days from final proof approval			





Draw people into your presentation with this one-of-a-kind table cover.



Great for attracting new members at gyms and fitness centers.



Attract attention at community events.

## ULTRAFIT CROSS OVER

### Get two unique looks with one versatile product.

The overlapping two-way poly-stretch covers fit over a ShowGoer 6' Folding Table, found on page 31, eliminating wrinkles. Easily reverse the order of the covers to create an alternate look. Fabric is FR rated (flame retardant treated) for exhibit halls. *Patent pending.*

#### UltraFit Cross Over Throw

Item #	Description	1	2-5	6-11	12-24
109090	6' Full-Bleed Dye Sub	500.00	445.00	420.00	390.00
Fabric dyed with any color(s)					(C)

**Table Size** 72"W x 29"H x 29.75"D  
**Full-Bleed Graphic Size** View Online Template  
 Set-up fee: \$30.00(G)  
 Production Lead Time: 3 days from final proof approval



6' UltraFit Cross Over



Easily stretch each cover over the top of your table throw for a polished look.

## STANDARD TABLE RUNNERS

**Runners are a simple and cost-effective way to add branding to any table throw.** Made of polyester poplin fabric, this runner is available in two widths and is perfect for promotions and school events. Fabric is FR rated (flame retardant treated) for exhibit halls.

#### Standard Runners

Item #	Description	1	2-5	6-11	12-24
102002	28" Full-Color Thermal Imprint	135.00	125.00	115.00	105.00
102014	57" Full-Color Thermal Imprint	165.00	145.00	135.00	125.00
Stock fabric colors imprinted with any color(s)					
102010	28" Full-Bleed Dye Sub	210.00	185.00	175.00	160.00
102022	57" Full-Bleed Dye Sub	245.00	220.00	200.00	185.00
Fabric dyed with any color(s)					(C)

**Description** **Finished Size** **Thermal/Front Panel Graphic Size** **Full-Bleed Graphic Size**  
 28" Standard Runners 28"W x 80"H 24"W x 17"H View Online Template  
 57" Standard Runners 57"W x 80"H 50"W x 17"H View Online Template  
 Set-up fee: \$30.00(G)  
 Production Lead Time: 3 days from final proof approval



57" Table Runner with Thermal Imprint



28" Table Runner with Full-Bleed Dye Sublimation

# RETRACTABLE BANNERS

A huge assortment of portable and easy to set up retractable banners!

- Many styles and sizes available for indoor and outdoor use
- Graphic retracts down into base for protection during transport
- One and two-sided displays to choose from
- RCAT rated for a guaranteed minimum number of retractions

## Suggested Product Uses

- Meetings
- Media Events
- Store Promotions
- Bank Counters
- Airports
- Hotel Lobbies



31.5" Retractor



Carry Case included



### PROMO RETRACTOR

**The most budget-friendly retractor for one time promotional use.** This classically styled retractable banner comes in two widths and features two swivel feet for added stability. Graphic is printed on tear-resistant Polypropylene Media for a low cost, professional look. RCAT Rating 25.

#### Promo Retractor

Item #	Description	1	2-5	6-11	12-24
262230	31.5" Polypropylene Graphic Kit	125.00	117.50	111.30	103.80
262232	33.5" Polypropylene Graphic Kit	135.00	126.90	120.20	112.10
Kit Includes: Hardware, Installed Graphic and Carry Case					(C)

Description	Product Size	Finished Graphic Size
31.5" Promo Retractor	33.5"W x 82"H x 14.875"D	31.5"W x 79.5"H
33.5" Promo Retractor	35.25"W x 82"H x 14.875"D	33.5"W x 79.5"H
Set-up fee: \$30.00(G)		
Production Lead Time: 2 days from final proof approval		



Shock cord pole easily connects for fast set up.



Lightweight aluminum base features plastic ends.

### MINI RETRACTORS

**Professionally display even the smallest messages.**

These lightweight, portable displays fit anywhere and are perfect for point-of-purchase.

#### Mini Retractors

Item #	Description	1	2-5	6-11	12-24
262014	Deluxe Mini Retractor Polypropylene Graphic Kit	53.00	51.00	50.00	49.00
210240	Mini Promo Retractor Small Polypropylene Graphic Kit	41.00	39.00	37.50	36.00
210242	Mini Promo Retractor Large Polypropylene Graphic Kit	46.00	43.50	42.50	40.50
Kit Includes: Hardware and Installed Graphic					(C)

Description	Product Size	Finished Graphic Size
Deluxe Mini Retractor	9.375"W x 17.75"H x 4"D	8.25"W x 16"H
Small Mini Promo Retractor	9.625"W x 13.25"H x 3"D	8.25"W x 11.75"H
Large Mini Promo Retractor	13.125"W x 17.875"H x 3"D	11.75"W x 16.5"H
Set-up fee: \$30.00(G)		
Production Lead Time: 2 days from final proof approval		



Large Mini Pro Retractor



Deluxe Mini Retractor

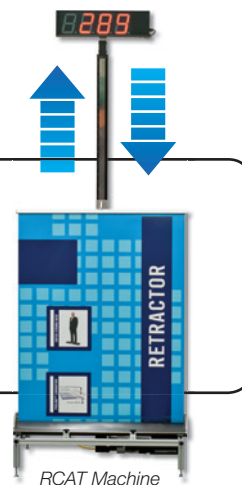


Small Mini Pro Retractor



To guarantee customers receive superior quality retractable banners, we developed an RCAT Machine that assesses all components in each retractable banner display. Each retractable banner display is tested and rated to a *minimum* number of times it will go up and down, with normal use, to match it to the right application.

Having confidence in your retractable banner display has never been easier with the RCAT Machine and Rating Certification.



RCAT Machine





Provide tips and useful information.



Greet visitors with your company information.



Perfect for use in lobbies or waiting rooms.

## ECONOMY RETRACTOR

**With an extended hardware warranty and many sizes to choose from, you won't find a better Economy Retractor anywhere!** Classic double-footed design offers reliability while keeping your display stable. RCAT Rating 100.

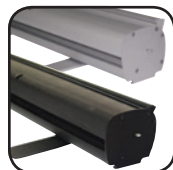
### Economy Retractor

Item #	Description	1	2-5	6-11	12-24
261134	31.5" Laminated No Curl Graphic Kit	245.00	229.00	219.00	210.00
262162	31.5" No Curl Opaque Fabric Graphic Kit	245.00	229.00	219.00	210.00
261136	33.5" Laminated No Curl Graphic Kit	265.00	251.00	234.00	220.00
262163	33.5" No Curl Opaque Fabric Graphic Kit	265.00	251.00	234.00	220.00

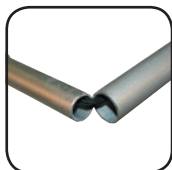
Kit Includes: Hardware, Installed Graphic and Carry Case (C)

Description	Product Size	Finished Graphic Size
31.5" Economy Retractor	32"W x 83"H x 15"D	31.5"W x 78.5"H
33.5" Economy Retractor	34.5"W x 83"H x 15"D	33.5"W x 78.5"H

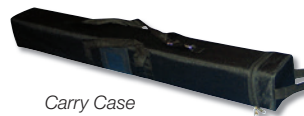
Set-up fee: \$30.00(G)  
Production Lead Time: 2 days from final proof approval



Aluminum hardware is available in silver or black (24" available in black only).



Shock cord pole easily connects for fast set up.



Carry Case included

### ADDITIONAL SIZES



48"



36"



24"

Table Top



31.5" Retractor

## ECONOMY PLUS RETRACTOR

**As reliable as the popular Economy Retractor, this retractor features increased durability and now an extended warranty and telescoping pole!** The single-footed base is made of heavy-duty aluminum for increased stability. RCAT Rating 150.

### Economy Plus Retractors

Item #	Description	1	2-5	6-11	12-24
261012	31.5" Laminated No Curl Graphic Kit	280.00	260.00	247.00	237.00
262180	31.5" No Curl Opaque Fabric Graphic Kit	280.00	260.00	247.00	237.00
261002	33.5" Laminated No Curl Graphic Kit	300.00	282.00	265.00	247.00
262181	33.5" No Curl Opaque Fabric Graphic Kit	300.00	282.00	265.00	247.00

Kit Includes: Hardware, Installed Graphic and Carry Case (C)

Description	Product Size	Finished Graphic Size
31.5" Economy Plus Retractor	32"W x 62"-82.5"H x 15"D	31.5"W x 58"-78.5"H
33.5" Economy Plus Retractor	34.5"W x 62"-82.5"H x 15"D	33.5"W x 58"-78.5"H

Set-up fee: \$30.00(G)  
Production Lead Time: 2 days from final proof approval



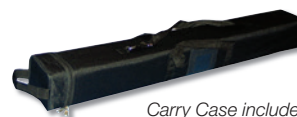
Hardware is available in silver.



Pole features an upgraded top rail attachment for easier set up.



Adjust the height of your display with the flip-lever telescoping pole.



Carry Case included





Adjustable heights allow some retractable banners to be used as a tabletop display.



A great solution for store promotions that change regularly.



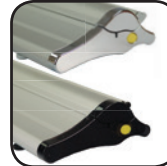
Use as an indoor billboard in high traffic areas.



Carry Case included



The 4-section flip-lever telescoping pole offers adjustable display height.



Low profile, footless base is available with silver or black end caps.



Easy flip open base and removable graphic rollers allow for frequent graphic changes.

## SUPERB RETRACTOR

With easy to install, interchangeable graphic rollers, containing your graphic, swap your message as often as you need. With an aluminum base and durable construction, this retractable banner will last a lifetime. RCAT Rating 800.

### Superb Retractor

Item #	Description	1	2-5	6-11	12-24
261118	Kit	390.00	376.00	347.00	335.00
Kit Includes: Hardware, Installed Graphic and Carry Case					(C)

Product Size	Finished Graphic Size
35.5"W x 34"-80.5"H x 7.75"D	33.5"W x 31.5"-78"H
Set-up fee: \$30.00(G)	
Production Lead Time: 2 days from final proof approval	



46.5" Double Retractor

33.5" Single Retractor



Carry Case included



Graphic features a hook and loop leader to easily remove and replace graphics.



2-section flip-lever telescoping pole offers adjustable.



Streamlined base is available in single or double graphic options.

## DELUXE PRO RETRACTOR

Create an upscale look in high traffic areas with one or two banners. Durable aluminum construction with aluminum end caps allows this retractable banner to stand up to frequent use. RCAT Rating 200.

### Deluxe Pro Retractors

Item #	Description	1	2-5	6-11	12-24
262250	33.5" Single Kit	300.00	282.00	267.00	249.00
262251	33.5" Double Kit	449.00	423.00	400.00	372.00
262254	46.5" Single Kit	340.00	320.00	303.00	283.00
262255	46.5" Double Kit	525.00	494.00	468.00	437.00
Kit Includes: Hardware, Installed Graphic(s) and Carry Case					(C)

Description	Product Size	Finished Graphic Size
33.5" Single Deluxe Pro Retractor	34.75"W x 64.625"-83.25"H x 8.5"D	33.5"W x 60.875"-79.5"H
33.5" Double Deluxe Pro Retractor	34.75"W x 64.625"-83.25"H x 9.125"D	33.5"W x 60.875"-79.5"H
46.5" Single Deluxe Pro Retractor	48.5"W x 64.625"-83.25"H x 8.5"D	46.5"W x 60.875"-79.5"H
46.5" Double Deluxe Pro Retractor	48.5"W x 64.625"-83.25"H x 9.125"D	46.5"W x 60.875"-79.5"H
Set-up fee: \$30.00(G)		
Production Lead Time: 2 days from final proof approval		





Expand your advertising space at colleges, libraries or community centers.



Change information throughout the year with changeable graphic retractable banners.

**EVEN MORE RETRACTABLE BANNERS, INCLUDING OUTDOOR OPTIONS, AVAILABLE ONLINE!**



## CHANGE AGENT RETRACTOR

**Graphic changes are made easy with the hook and loop leader.** Featuring a fabric graphic for a professional look, this retractable banner comes in a variety of sizes and finishes to choose from to fit all your needs. RCAT Rating 300.

### Change Agent Retractor

Item #	Description	1	2-5	6-11	12-24
263210	36" Woodgrain Kit	340.00	320.00	303.00	282.00
263204	36" Champagne / Silver Kit	325.00	305.00	290.00	270.00
190381	36" Graphic Only	166.00	156.00	148.00	138.00

Kit Includes: Hardware, Installed Graphic and Carry Case (C)

**Product Size**  
37.5"W x 72"-83"H x 9.5"D  
Set-up fee: \$30.00(G)  
Production Lead Time: 2 days from final proof approval

**Finished Graphic Size**  
36"W x 69"-80"H

### ADDITIONAL SIZES



31"

33"

ADJUSTABLE GRAPHIC

EASY TO CHANGE GRAPHICS



Carry Case included



Adjustable Graphic: 69"-80"H

Silver Base

NEW & IMPROVED



Base is available in champagne, silver and woodgrain with NEW robust aluminum end caps.



The 2-section twist lock telescoping pole offers adjustable display height.



Graphic features a hook and loop leader to easily remove and replace graphics.

## JUMBO WIDE RETRACTORS

**Create an impressive backdrop with this wide retractable banner that comes in three sizes.** Aluminum base with double-foot support adds extra stability, while high-tension base springs keep your banner taut. Quick and easy two person set up. RCAT Rating 100.

### Jumbo Wide Retractors

Item #	Description	1	2-5	6-11	12-24
262138	5' No Curl Fabric Graphic Kit	510.00	496.00	473.00	455.00
261080	5' 13 oz Smooth Graphic Kit	510.00	496.00	473.00	455.00
262139	6' No Curl Fabric Graphic Kit	615.00	595.00	570.00	545.00
261082	6' 13 oz Smooth Graphic Kit	615.00	595.00	570.00	545.00
262140	8' No Curl Fabric Graphic Kit	720.00	695.00	670.00	645.00
261018	8' 13 oz Smooth Graphic Kit	720.00	695.00	670.00	645.00

Kit Includes: Hardware, Installed Graphic and Carry Case (C)

**Description**  
5' Jumbo Wide Retractor 61.375"W x 83"H x 15.75"D  
6' Jumbo Wide Retractor 73.625"W x 83"H x 15.75"D  
8' Jumbo Wide Retractor 96"W x 83"H x 15.75"D  
Set-up fee: \$30.00(G)  
Production Lead Time: 2-4 days from final proof approval

**Product Size**  
61.375"W x 83"H x 15.75"D  
73.625"W x 83"H x 15.75"D  
96"W x 83"H x 15.75"D

**Finished Graphic Size**  
59.75"W x 78.75"H  
71.75"W x 78.75"H  
94.75"W x 78.75"H

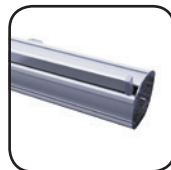


5'

6'



Two shock cord poles provide added support for the wide graphic.



Hardware comes in silver.



Carry Case included

# BANNER DISPLAYS

Some of the lightest and least expensive displays in the industry.

- Portable with quick and easy set up
- Vinyl and fabric displays available
- A variety of short and long-term use options

## Suggested Product Uses

- Banks
- Lobbies
- Restaurants
- Tournaments
- Craft Shows
- Jewelry Stores



### TRI-X & EURO-X DISPLAYS

These X displays feature a durable aluminum hub that provides the support system needed for a sturdy presentation. Strong, fiberglass arms connect to the durable, aluminum hub to create a taut banner. The cost-effective Tri-X display is perfect for bulk quantity purchases. The heavy-duty back leg keeps the Euro-X display stable.

#### X Banner Displays

Item #	Description	1	2-5	6-11	12-24
263100	Tri-X Banner Display 33.5" x 80" Kit	155.00	150.00	145.00	140.00
263120	Euro-X Banner Display 31.5" x 70" Kit	185.00	175.00	165.00	155.00

Kit Includes: Hardware, Graphic and Carry Case

Description	Product Size	Finished Graphic Size
33.5" x 80" Tri-X Display	33.5"W x 80"H x 32.5"D	33.5"W x 80"H
31.5" x 70" Euro-X Display	31.5"W x 70"H x 20.5"D	31.5"W x 70"H

Set-up fee: \$30.00(G)

Production Lead Time: 2 days from final proof approval



Tri-X: Insert back leg into the aluminum hub for a sturdy display.



Euro-X: Aluminum hub extends into the strong support leg.

Carry Case included



### 360° BANNER DISPLAY

The most adjustable display on the market, rotating 360° and tilting up to 90°.

Use it as a stand alone display or table backdrop when space is limited. The lightweight display features plastic banner hooks and strong fiberglass arms to keep your graphic taut.

#### 360° Banner Display

Item #	Description	1	2-5	6-11	12-24
210111	36" x 78" Kit	375.00	355.00	335.00	325.00
210113	40" x 75" Kit	385.00	360.00	340.00	330.00
210114	48" x 72" Kit	410.00	380.00	360.00	340.00

Kit Includes: Hardware, Graphic and Carry Case

Description	Product Size	Finished Graphic Size
36" x 78" 360° Display	78"W x 59"H x 13.75"D	78"W x 36"H
40" x 75" 360° Display	75"W x 63"H x 13.75"D	75"W x 40"H
48" x 72" 360° Display	72"W x 71"H x 13.75"D	72"W x 48"H

Set-up fee: \$30.00(G)

Production Lead Time: 2 days from final proof approval



Center hub adjusts to rotate your banner.



Grommets banner easily attaches to hooks on display.

Carry Case included





Ideal for continually changing retail promotions.



A great way to advertise products in a building entrance.



Great for promoting services in lobbies and reception areas.

## EVERYDAY BANNER DISPLAYS

**This best selling display offers easy graphic installation, with multiple base and size options.** The powder-coated steel frame holds one or two graphics that can be changed in seconds with dowels and pole pockets.

### Everyday Banner Displays

Item #	Description	1	2-5	6-11	12-24
210265	Everyday Kit	170.00	165.00	160.00	155.00
210226	Everyday Heavy-Duty Kit	194.00	191.00	188.00	184.00
Kit Includes: Hardware, (1) 24"W x 72"H Graphic and (2) 24" Dowels					(C)

\*Dowels not included in Hardware Only and Graphic Only orders

Description	Product Size	Finished Graphic Size
Everyday Banner Display	24"W x 48"-90"H x 13"D	12"-36"W x 12"-90"H
Everyday Heavy-Duty Banner Display	14"W x 48"-90"H x 14"D	12"-36"W x 47.5"-90"H
Set-up fee: \$30.00(G)		
Production Lead Time: 2 days from final proof approval		



Steel hardware available in silver or black (Heavy-Duty Kit available in black only).



Quickly adjust hardware for custom sized banners using the telescoping pole and thumbscrew.



Banner pole pockets and dowels allow for easy install.

ADJUSTABLE GRAPHIC

EASY TO CHANGE GRAPHICS



Silver Hardware shown with one graphic



Black Hardware shown with two graphics

Adjustable Height: 12"-90"H

## EVERYDAY SNAP RAIL BANNER DISPLAYS

**Graphics attach with snap rails for a polished look.**

The durable, steel frame features a long-lasting, powder-coated finish and can hold either one or two graphics for multiple applications.

### Everyday Snap Rail Banner Displays

Item #	Description	1	2-5	6-11	12-24
264030	24" Kit	185.00	180.00	175.00	170.00
264032	30" Kit	195.00	190.00	185.00	175.00
24" Kit Includes: Hardware and (1) 24"W x 72"H Graphic					(C)
30" Kit Includes: Hardware and (1) 30"W x 72"H Graphic					

Description	Product Size	Finished Graphic Size
24" Everyday Snap Rail Display	24"W x 48"-90"H x 13.25"D	24"W x 12"-90"H
30" Everyday Snap Rail Display	30"W x 48"-90"H x 13.25"D	30"W x 12"-90"H
Set-up fee: \$30.00(G)		
Production Lead Time: 2 days from final proof approval		



Quickly adjust telescoping pole and thumbscrew hardware for custom sized banners.



Banner fits neatly into the Snap Rail for a polished look.

ADJUSTABLE GRAPHIC

EASY TO CHANGE GRAPHICS



Shown with one graphic



Shown with two graphics

Adjustable Height: 12"-90"H

# SAIL SIGN FLAGS

**Sail Signs create movement and attention with their unique shapes and sizes.**

- Lightweight, brilliantly colored, dye sublimated banners respond to the slightest breeze
- Carbon composite poles are superior and the industry's gold standard
- Available with full-color graphics

## Suggested Product Uses

- Zoos
- Museums
- Golf Courses
- Sporting Events
- Trade Shows
- Car Dealerships

### SINGLE OR DOUBLE-SIDED



**Single-Sided**  
Reverse image on the back



**Double-Sided**  
Correct image on both sides



17' Razor

8' Tear Drop

10' Rectangle

15' Tear Drop

7' Razor

13' Sabre



**CHECK OUT THE NEWEST STYLES OF SAIL SIGNS!**

*Available online*

### MESH SAIL SIGN BANNERS

Two uniquely shaped Sail Signs featuring high-quality fabric mesh banners.



Mesh material allows for air to pass through.



### STREAMLINE SAIL SIGN FLAGS

Enjoy the advertising benefits of Sail Sign Flags with an uninterrupted graphic that extends across the pole pocket.



Pole pocket is made from the same dye sublimated Super Poly Knit Fabric as the flag.







Welcome students back to school while promoting team spirit.



Line up Sail Signs to create attention-grabbing movement alongside buildings.



Call attention to new products when placed outside of your business.

## SAIL SIGN FLAGS

**The slightest movement makes these banners flutter, creating motion to attract attention to your message.** Available in four styles, ranging from 6' up to 17' tall. Full-color banners can be printed single or double-sided for maximum visibility. Poles are constructed of a strong and flexible carbon composite material that is superior to the aluminum options and are backed by a Lifetime Warranty. Quick Ship options available online.

### Tear Drop Sail Sign

Tear Drop Sail Sign		Single-Sided Banner				Double-Sided Banner				
Description	Item #	1	2-5	6-11	12-24	Item #	1	2-5	6-11	12-24
6' Kit w/Spike Base	190976	220.00	210.00	200.00	190.00	190974	335.00	325.00	305.00	295.00
8' Kit w/Spike Base	190682	240.00	230.00	220.00	210.00	190680	355.00	345.00	325.00	315.00
11.5' Kit w/Spike Base	190687	300.00	285.00	270.00	250.00	190685	385.00	375.00	355.00	340.00
15' Kit w/Spike Base	190692	340.00	320.00	300.00	285.00	190690	410.00	400.00	380.00	365.00
Kit Includes: Hardware w/Spike Base, Banner and Carry Case										
(C)										

Kit Includes: Hardware w/Spike Base, Banner and Carry Case

(C)

### Razor Sail Sign

Razor Sail Sign		Single-Sided Banner				Double-Sided Banner				
Description	Item #	1	2-5	6-11	12-24	Item #	1	2-5	6-11	12-24
7' Kit w/Spike Base	190982	220.00	210.00	200.00	190.00	190980	335.00	325.00	305.00	295.00
9' Kit w/Spike Base	190667	240.00	230.00	220.00	210.00	190665	355.00	345.00	325.00	315.00
13' Kit w/Spike Base	190672	300.00	290.00	265.00	250.00	190670	385.00	375.00	355.00	340.00
17' Kit w/Spike Base	190677	340.00	320.00	300.00	285.00	190675	410.00	400.00	380.00	365.00

Kit Includes: Hardware w/Spike Base, Banner and Carry Case

(C)

### Sabre Sail Sign

Sabre Sail Sign		Single-Sided Banner				Double-Sided Banner				
Description	Item #	1	2-5	6-11	12-24	Item #	1	2-5	6-11	12-24
9' Kit w/Spike Base	190952	240.00	230.00	220.00	210.00	190950	355.00	345.00	325.00	315.00
13' Kit w/Spike Base	190958	300.00	290.00	265.00	250.00	190956	385.00	375.00	355.00	340.00
17' Kit w/Spike Base	190964	340.00	320.00	300.00	285.00	190962	410.00	400.00	380.00	365.00
Kit Includes: Hardware w/Spike Base, Banner and Carry Case										

Kit Includes: Hardware w/Spike Base, Banner and Carry Case

(C)

### Rectangular Sail Sign

Rectangular Sail Sign		Single-Sided Banner				Double-Sided Banner				
Description	Item #	1	2-5	6-11	12-24	Item #	1	2-5	6-11	12-24
7' Kit w/Spike Base	190652	240.00	230.00	220.00	210.00	190650	355.00	345.00	325.00	315.00
10' Kit w/Spike Base	190657	300.00	290.00	265.00	250.00	190655	385.00	375.00	355.00	340.00
14.5' Kit w/Spike Base	190662	340.00	320.00	300.00	285.00	190660	410.00	400.00	380.00	365.00
Kit Includes: Hardware w/Spike Base, Banner and Carry Case										(C)

Kit Includes: Hardware w/Spike Base, Banner and Carry Case

(C)

#### Product Sizes Finished Graphic Size

Sizes Vary View Online Template  
Set-up fee: \$30.00(G)  
Production Lead Time: 4 days from final proof approval

#### Wind Test Assessment:

6'-11' to withstand winds up to 30 mph with use of water ballast  
13'-17' to withstand winds up to 20 mph with use of water ballast

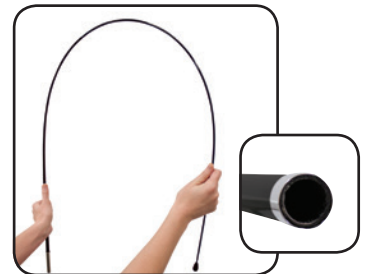
#### Disclaimer:

Wind rating conducted in a controlled environment. Outdoor products should be taken down if the likelihood of bad weather is possible. Wind gusts and heavy rain could reduce the wind resistance of these products.

## LIFETIME WARRANTY ON POLE HARDWARE



Lifetime Warranty covers poles only. Banners used indoors include a 1 year warranty. Banners used outdoors include a 90 day warranty.



**Carbon composite poles are strong and flexible!**

### Sail Sign Bases & Accessories

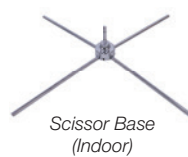
Item #	Description	1	2-5	6-11	12-24
190711	Heavy-Duty Cross Base	73.00	72.00	71.00	70.00
190707	Scissor Base	63.00	62.00	61.00	60.00
190714	3-Leg Scissor Base	31.00	30.00	29.00	28.00
190709	Vehicle Base	63.00	62.00	61.00	60.00
190710	Square Water Ballast	42.00	41.00	40.00	39.00
190708	Round Water Ballast	42.00	41.00	40.00	39.00
220082	Universal Product Case	107.00	104.00	101.00	99.00

Hardware Lead Time: Ships same day when ordered before 2 PM CST

(C)



Heavy-Duty Cross Base (Indoor/Outdoor)



Scissor Base (Indoor)



3-Leg Scissor Base for 6' Tear Drop & 7' Razor (Indoor)



Vehicle Base (Outdoor)



Square Water Ballast (Indoor/Outdoor)



Round Water Ballast (Indoor/Outdoor)



Universal Product Case with Wheels (Holds up to 3 Sail Signs with Soft Carry Case)

# BANNERS & FLAGS

## Promote messages and events with dynamic banners!

- Large selection of vinyl and fabric banners
- Effective indoor and outdoor advertising
- High quality, full-color graphic impact
- Multiple finishing styles available

## POPULAR VINYL FINISHING STYLES

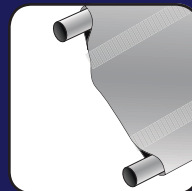
Additional finishing styles and details available online!



Heat Weld Hem  
& Grommets



Heat Weld Hem,  
Rope & Grommets



Heat Weld &  
3" Pole Pockets



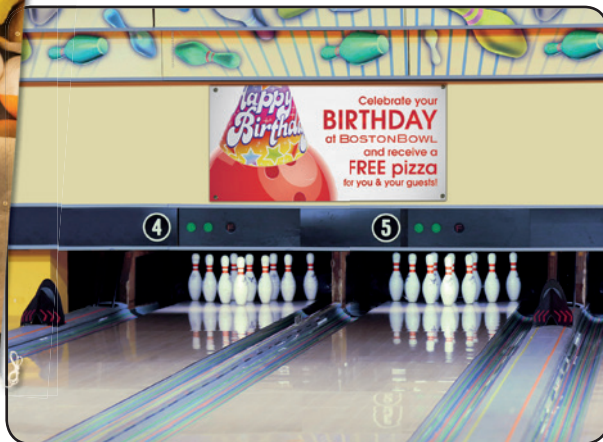
10 oz Vinyl Banner



13 oz Vinyl Banner



13 oz Smooth Vinyl Banner



## 10 OZ VINYL BANNERS

Light-duty banners that are great for indoor or short-term outdoor events and offer quality and functionality.

### 10 oz Vinyl Single-Sided Banners

Item #	Size	1-2	3-7	8-22	23-49
304245	2' x 4'	25.60	24.00	22.40	20.80
Item #	Size	1	2-3	4-9	10-22
304252	3' x 6'	57.60	54.00	50.40	46.80
Item #	Size	1-2	3-7	8-16	17-33
304255	4' x 6'	72.00	67.20	62.40	57.60

Set-up fee: \$30.00(G)

Production Lead Time: 2 days from final proof approval

(C)

## 13 OZ VINYL BANNERS

Versatile, indoor and outdoor banners are a top choice when it comes to value.

### 13 oz Vinyl Single-Sided Banners

Item #	Size	1-2	3-7	8-22	23-49
304360	2' x 4'	27.20	24.80	22.40	20.80
Item #	Size	1	2-3	4-9	10-22
304364	3' x 6'	61.20	55.80	50.40	46.80
Item #	Size	1	2-5	6-12	13-24
304367	4' x 8'	99.20	89.60	83.20	76.80

Set-up fee: \$30.00(G)

Production Lead Time: 2 days from final proof approval

(C)

## 13 OZ SMOOTH VINYL BANNERS

High quality prints on an extra smooth surface, perfect for indoor use.

### 13 oz Smooth Vinyl Single-Sided Banners

Item #	Size	1-2	3-7	8-22	23-49
304225	2' x 4'	30.00	27.20	24.40	22.80
Item #	Size	1	2-3	4-9	10-22
304229	3' x 6'	67.50	61.20	54.90	51.30
Item #	Size	1	2-5	6-12	13-24
304232	4' x 8'	108.80	97.60	91.20	84.80

Set-up fee: \$30.00(G)

Production Lead Time: 2 days from final proof approval

(C)



**NEW**

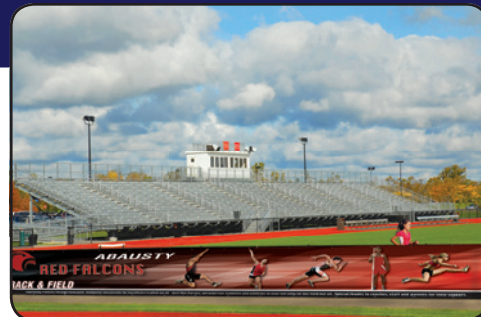
## HEAT WELD FINISHING

- Strongest type of vinyl finishing
- Heat fuses material together creating a cleaner, more seamless look
  - Welded seams are stronger and longer lasting than sewn hems

Anniversary



Highlight important community information in a public place.



A great way to show team spirit on stadium fences.

## 18 OZ VINYL BANNERS

Extremely durable and ideal for long-term, outdoor use.

### 18 oz Vinyl Single-Sided Banners

Item #	Size	1	2-3	4-9	10-22
304384	3' x 6'	69.30	63.90	58.50	54.00
Item #	Size	1	2-5	6-12	13-24
304387	4' x 8'	113.60	104.00	96.00	89.60
Item #	Size	1	2-4	5-9	10-19
304388	4' x 10'	142.00	130.00	120.00	112.00

Set-up fee: \$30.00(G)

Production Lead Time: 2 days from final proof approval



18 oz Vinyl Banner

## 9 OZ MESH VINYL BANNERS

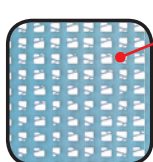
Ideal for outdoor, long-term use, these breathable banners can be used on breezy days without added pressure to the material.

### 9 oz Mesh Vinyl Single-Sided Banners

Item #	Size	1	2-4	5-14	15-33
304411	2' x 6'	46.20	42.60	39.00	36.00
Item #	Size	1	2-3	4-9	10-22
304414	3' x 6'	69.30	63.90	58.50	54.00
Item #	Size	1	2-5	6-12	13-24
304417	4' x 8'	113.60	104.00	96.00	89.60

Set-up fee: \$30.00(G)

Production Lead Time: 2 days from final proof approval



9 oz Mesh Vinyl Banner

**NEW**

# QUICK AND EASY ONLINE BANNERS!

Visit our website for accurate quotes and hassle-free banner ordering 24/7!

**EASY ONLINE ORDERS**

- Accurate Quoting
- Large Quantities
- Special Material
- Additional Finishing Styles
- Custom Sizes



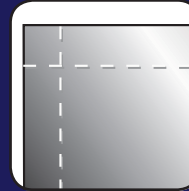




Ideal for building exteriors or areas where air needs to pass through.

## POPULAR FABRIC FINISHING STYLES

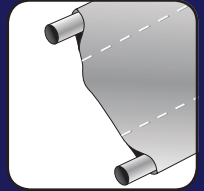
Additional finishing styles and details available online!



Sewn Hem Only



Sewn Hem & Grommets



3" Pole Pockets



Super Poly Knit  
Fabric Banner

## SUPER POLY KNIT FABRIC BANNERS

Lightweight, fabric banners allow wind to pass through, making them great for outdoor use!

### Super Poly Knit Single-Sided Banners

Item #	Size	1-2	3-7	8-22	23-49
304420	2' x 4'	60.00	53.60	48.00	43.20
Item #	Size	1	2-3	4-9	10-22
304424	3' x 6'	135.00	120.60	108.00	97.20
Item #	Size	1	2-5	6-12	13-24
304427	4' x 8'	214.40	192.00	172.80	156.80

Set-up fee: \$30.00(G)

Production Lead Time: 4 days from final proof approval



Poly-Poplin  
Fabric Banner

## POLY-POPLIN FABRIC BANNERS

Indoor, close-range viewing is made possible with high-quality, dye sublimated graphics.

### Poly-Poplin Single-Sided Banners

Item #	Size	1-2	3-7	8-22	23-49
305000	2' x 4'	45.60	42.40	40.00	38.40
Item #	Size	1	2-3	4-9	10-22
305004	3' x 6'	102.60	95.40	90.00	86.40
Item #	Size	1	2-5	6-12	13-24
305007	4' x 8'	169.60	160.00	153.60	147.20

Set-up fee: \$30.00(G)

Production Lead Time: 4 days from final proof approval



Aluminum Fabric Banners

## ALUMINUM FABRIC BANNERS

Give your message a metallic sheen, indoors or outdoors, on woven polyester fabric with aluminum coating.

### Aluminum Single-Sided Banners

Item #	Size	1-2	3-7	8-22	23-49
304760	2' x 4'	48.00	44.80	42.40	40.80
Item #	Size	1	2-3	4-9	10-22
304762	3' x 6'	108.00	100.80	95.40	91.80
Item #	Size	1	2-5	6-12	13-24
304765	4' x 8'	179.20	169.60	163.20	156.80

Set-up fee: \$30.00(G)

Production Lead Time: 4 days from final proof approval

## LOOKING FOR FULL-COLOR FLAGS?

VIEW OUR WEBSITE FOR SINGLE AND DOUBLE-SIDED OPTIONS!

Durable, vibrantly colored flags for indoor or outdoor use. Fully customizable and easy to hang, these flags work well with any standard flag pole.







Display around college campuses to show school pride.



Line the pathway around an apartment building to advertise vacancies.



## BOULEVARD BANNERS

### The perfect way to spice up any town, street or parking lot.

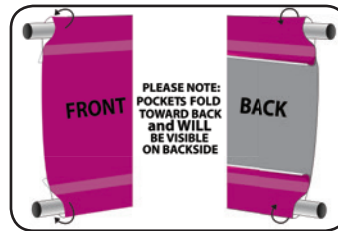
Strong 18 oz Opaque Vinyl withstands the elements for long-term outdoor use. Finished with 3" pole pockets on the top and bottom with grommets to fit most boulevard bracket systems. Hardware sold separately - see below.

#### 18 oz Opaque Vinyl Boulevard Banners

Item #	Description	1-4	5-13	14-39	40-89
302031	18" x 36" Double-Sided	35.10	32.85	30.60	28.80
Item #	Description	1-3	4-9	10-29	30-66
302035	24" x 36" Double-Sided	46.80	43.80	40.80	38.40
Item #	Description	1-2	3-7	8-22	23-49
302037	24" x 48" Double-Sided	62.40	58.40	54.40	51.20
Item #	Description	1	2-5	6-17	18-39
302039	24" x 60" Double-Sided	78.00	73.00	68.00	64.00
Item #	Description	1	2-4	4-14	15-33
302041	24" x 72" Double-Sided	93.60	87.60	81.60	76.80
Item #	Description	1	2-4	5-14	15-31
302045	30" x 60" Double-Sided	97.50	91.25	85.00	80.00

Banner only. Hardware sold separately - see below.

(C)



## VERSATILE BRACKET SYSTEM

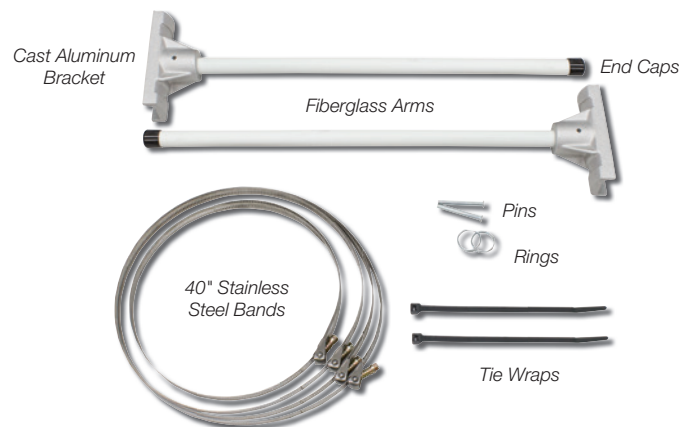
**Designed with versatility in mind – this bracket system fits almost any wood or steel pole.** Rust-free cast aluminum with fiberglass arms easily withstand outdoor conditions. Displays multiple banner sizes up to 24 square feet. Banners sold separately - see above.

#### Versatile Bracket System

Item #	Description	1-9	10-24	25-49	50-99
302020	18" Versatile Single	87.00	82.00	72.00	67.00
302006	24" Versatile Single	88.00	84.00	79.00	76.00
302008	30" Versatile Single	92.00	87.00	82.00	78.00
302021	18" Versatile Double	143.00	138.00	128.00	123.00
302007	24" Versatile Double	148.00	143.00	133.00	128.00
302009	30" Versatile Double	158.00	148.00	138.00	133.00

Hardware only. Banner sold separately - see above.

(C)



## PREMIUM BRACKET SYSTEM

**Created from stainless steel and aluminum, this bracket system will withstand the harshest outdoor elements without rusting.** The spring arm bends up to 60° to deflect the strongest winds, helping banners last longer. Easily attach the brackets to wood or steel poles. Banners sold separately - see above. Patent #6378820

#### Premium Bracket System

Item #	Description	1	2-5	6-11	12-24
302060	30" Premium Single	112.00	107.00	102.00	97.00
302061	30" Premium Double	189.00	184.00	179.00	174.00
302062	30" Premium Single w/Spring Arm	141.00	140.00	136.00	131.00
302063	30" Premium Double w/Spring Arm	240.00	235.00	230.00	225.00

Hardware only. Banner sold separately - see above.

(C)



# TENTS & EVENT PRODUCTS

Tents provide a functional branding opportunity indoors and outdoors.

- Traditional tents and inflatable options
- Sizes ranging from 6' wide to 20' wide
- Multiple printing options to fit any budget
- Customize your tent with accessories and printed walls

## Suggested Product Uses

- Car Shows
- Tailgating
- Fund Raisers
- Recruiting
- Company Parties
- Craft and Art Fairs



### SHOWSTOPPER PREMIUM EVENT TENT

The frame is constructed of strong, anodized aluminum and now comes with a **5 year hardware warranty!** The hexagon shaped legs feature ABS glass-filled nylon joints providing increased strength for long-term use. The easy-to-use crank-up canopy ensures a professional fit every time.

#### ShowStopper Premium 10' Tent

Item #	Description	1	2-5	6-11	12-24
240631	Full-Color Thermal Imprint (1 Location)	715.00	697.00	680.00	662.00
240634	Full-Color Thermal Imprint (4 Locations)	925.00	901.00	878.00	854.00
240639	Full-Bleed Dye Sublimation	1325.00	1293.00	1262.00	1230.00

(C)

#### Product Size

118"W x 126.75"-139.25"H x 118"D

Set-up fee: \$30.00(G)

Production Lead Time: 4-7 days from final proof approval

#### Thermal Graphic Size

Peak: 44"W x 24"H; Valance: 60"W x 8"H

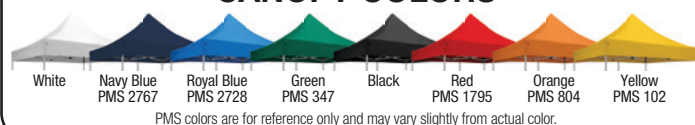
#### Full-Bleed Finished Graphic Size

View Online Template



Legs feature a lever for height adjustments.

### CANOPY COLORS



### SHOWSTOPPER STANDARD EVENT TENT

The most popular and cost-effective tent features a **lightweight construction and is easily portable.** The pebble powder-coated steel frame, with strong ABS Nylon joints, provides durability with easy-push buttons for a pinch-free set up. An effortless crank-up canopy ensures a perfect fit every time.

#### ShowStopper Standard 10' Tent

Item #	Description	1	2-5	6-11	12-24
240611	Full-Color Thermal Imprint (1 Location)	505.00	487.00	470.00	452.00
240614	Full-Color Thermal Imprint (4 Locations)	715.00	691.00	668.00	644.00
240619	Full-Bleed Dye Sublimation	1115.00	1083.00	1052.00	1020.00

(C)

#### Product Size

118.5"W x 127.5"-140"H x 118.5"D

Set-up fee: \$30.00(G)

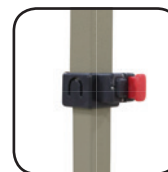
Production Lead Time: 4-7 days from final proof approval

#### Thermal Graphic Size

Peak: 44"W x 24"H; Valance: 60"W x 8"H

#### Full-Bleed Finished Graphic Size

View Online Template



Legs feature plastic push buttons for height adjustments.







Use indoors or where your event space is limited.



Call attention to specific products with a tent placed outside of your business.



Protect yourself and your products from the elements with a branded canopy.

## SHOWSTOPPER DELUXE 8' TENT

**This Deluxe Tent is compact to fit in tight spaces and is easily portable!** Steel frame features a pebble powder-coated finish and tough ABS glass-filled nylon joints for added strength. Easy-to-use levers and crank-up canopy makes set up and tear-down a breeze.

### ShowStopper Deluxe 8' Tent

Item #	Description	1	2-5	6-11	12-24
240821	Full-Color Thermal Imprint (1 Location)	565.00	553.00	541.00	524.00
240824	Full-Color Thermal Imprint (4 Locations)	775.00	757.00	739.00	716.00
240829	Full-Bleed Dye Sublimation	1165.00	1139.00	1113.00	1082.00

(C)

**Product Size** 96"W x 117.5"-130"H x 96"D  
**Thermal Graphic Size** Peak: 36"W x 28"H; Valance: 50"W x 8"H  
**Full-Bleed Finished Graphic Size** View Online Template  
 Set-up fee: \$30.00(G)  
 Production Lead Time: 4-7 days from final proof approval

### CANOPY COLORS



Legs feature a lever for height adjustments.



Deluxe 8' Tent with Full-Bleed Dye Sublimation

## SHOWSTOPPER PREMIUM 10' X 20' TENT

**This spacious tent has been updated to offer the same great benefits as the Premium Tent frame.** Now with hexagon shaped aluminum legs offering increased strength for long-term use. The canopy is available in white only or dye sublimated.

### ShowStopper Premium 10' x 20' Tent

Item #	Description	1	2-5	6-11	12-24
240571	Full-Color Thermal Imprint (1 Location)	920.00	901.00	882.00	855.00
240574	Full-Color Thermal Imprint (4 Locations)	1130.00	1105.00	1080.00	1047.00
240583	Full-Bleed Dye Sublimation	1940.00	1900.00	1860.00	1805.00

(C)

**Product Size** 234.5"W x 126.75"-139.25"H x 118.25"D  
**Thermal Graphic Size** Peak: 44"W x 24"H; Valance: 60"W x 8"H  
**Full-Bleed Finished Graphic Size** View Online Template  
 Set-up fee: \$30.00(G)  
 Production Lead Time: 4-7 days from final proof approval



Premium 20' Tent with Full-Bleed Dye Sublimation

## EVENT TENT QUICK & EASY SET UP FEATURES



Sets up in minutes



Easily adjust your tent height with the push of a button



Crank-up canopy allows for a perfect canopy fit



Secure tent to ground with Tent Stake Kit (included with tent kits)



Collapses easily to store in soft case with wheels (included with tent kits)



Easy-Glide Tent feet for easy mobility Patent Pending



This display offers massive branding opportunities when placed at large outdoor events.



Add excitement and branding from start to finish at any event.



Use coolers for in-store promotions to show-off your product.



Geodesic Air Display shown with Super Poly Knit Flag Cover

## GEODESIC AIR DISPLAY

**A unique shape that offers an innovative take on the traditional event tent.** Featuring two canopy materials to choose from; a lightweight, breathable Super Poly Knit or heavy-duty, weather-resistant 400 Denier Polyester. There is no need for a continuous running blower motor, simply inflate the display in less than five minutes with the provided air pump and seal the valve shut. Recommended for use in above freezing temperatures.

### Geodesic Air Display

Item #	Description	1	2-5	6-11	12-24
211150	Kit with 400 Denier Polyester Canopy	2900.00	2840.00	2785.00	2695.00
211151	Kit with Super Poly Knit Flag Canopy	2900.00	2840.00	2785.00	2695.00

Kit Includes: Inflatable Structure, Canopy, Electric Air Pump, Stakes, Rope, Bungees and Vinyl Bag (C)

Product Size	Circumference	Finished Graphic Size
142"W x 109.75"H x 118.75"D	27.5"	View Online Template
Set-up fee: \$30.00(G)		
Production Lead Time: 7 days from final proof approval		



### KIT INCLUDES:



Electric Air Pump



Rope and Stakes



Graphic attaches to the display using bungee cords to keep it taut.



Jumbo Arch Display

Arch Display

## ARCH INFLATABLE DISPLAYS

**Create a grand entrance with inflatable archways.** Constructed from strong, PVC-coated nylon, a low weight, tear-resistant and water-resistant material, to stand up to outdoor use. Displays inflate in less than a minute for quick set up.

### Arch Inflatable Displays

Item #	Description	1	2-5	6-11	12-24
211051	Arch with Graphics Kit	2200.00	2155.00	2090.00	2045.00
211052	Arch Only Kit (No Graphics)	1600.00	1570.00	1520.00	1490.00
211061	Jumbo Arch with Graphics Kit	2400.00	2350.00	2280.00	2230.00
211062	Jumbo Arch Only Kit (No Graphics)	1800.00	1765.00	1710.00	1675.00

Kit Includes: Inflatable, (2) Side Graphics, (1) Top Graphic, Electric Blower, Stakes, Rope and Carry Case

Description	Product Size with Tube and Electric Blower	Circumference	Finished Graphic Size
Arch	235"W x 120.5"H x 26.5"D	86"	View Online Template
Jumbo Arch	242"W x 162"H x 103"D	116"	View Online Template
Set-up fee: \$30.00(G)			
Production Lead Time: 7 days from final proof approval			



### KIT INCLUDES:



4 amp Continuous Blower



Rope and Stakes



Graphics attach using hook and loop; allowing for interchangeable messages.



Use the attached rings to secure arch with heavy-duty stakes and ropes.



## SPIN 'N WIN PRIZE WHEEL

Add some spin and excitement into your next trade show or promotion. 12 prize slots and a center plate are customizable and interchangeable. Each click of the plastic pointer builds anticipation as the wheel spins.

### Spin 'N Win Prize Wheel

Item #	Description	1	2-5	6-11	12-24
280104	Kit	525.00	520.00	515.00	510.00
Kit Includes: Hardware, Graphics and Carry Case				(C)	

**Product Size**  
31.25"W x 40.75"-72"H x 16"-31"D  
Set-up fee: \$30.00(G)  
Production Lead Time Thermal Imprint: 2 days from final proof approval

**Finished Graphic Size**  
View Online Template



The prize wheel adjusts to fit on a table or can stand alone.



Prize cards and center plate can be printed from a desktop printer.



Adjustable Product Height: 40.75" - 72"H

## FOUR SEASON EVENT COOLERS

Keep a large volume of beverages cool while advertising indoors or outdoors. Molded insulation and a tinted lid help keep contents colder longer while holding up to 40 lbs. of ice and 48 12 oz cans. You can choose from two graphic options for vibrant, full-color messaging.

### Four Season Event Coolers

Item #	Description	1	2-5	6-11	12-24
280220	Kit with Digital Inkjet Graphic	375.00	368.00	364.00	356.00
280222	Kit with Rappz™ Graphic	415.00	407.00	403.00	394.00
Kit Includes: Hardware and Graphic Wrap				(C)	

**Product Size**  
22.125"W x 35"H x 25.125"D  
Set-up fee: \$30.00(G)  
Production Lead Time: 4-5 days from final proof approval

**Finished Graphic Size**  
View Online Template



Single pivot lid can be opened and closed with one hand.



Molded handles and two wheels for mobility.



With Digital Inkjet Graphic



With Rappz™ Graphic

**rappz™**  
COOLER COVER GRAPHICS

Customize portable coolers to extend your organization or brand recognition at events. Eight reusable styles and sizes to choose from for on-the-go food and drink storage. The form-fitting, neoprene cover, with dye sublimated graphics stretch over Coleman® Brand coolers and many similar sized cooler brands, for a professional look.

### Rappz™ Cooler Cover Graphics

Item #	Description	1-2	3-5	6-11	12-24
210452	1/2 Gallon Jug Cooler Cover Graphics Kit	N/A	36.00	35.30	34.60
210455	5 Gallon Jug Cooler Cover Graphics Kit	N/A	90.00	88.20	86.40
210458	18 Quart Cooler Cover Graphics Kit	N/A	67.00	65.70	64.30
210470	40 Quart Wheeled Cooler Cover Graphics Kit	110.00	109.00	108.00	107.00
210461	48 Quart Cooler Cover Graphics Kit	88.00	87.00	86.00	85.00
210473	50 Quart Wheeled Cooler Cover Graphics Kit	130.00	129.00	128.00	127.00
210464	70 Quart Cooler Cover Graphics Kit	140.00	139.00	138.00	137.00
210467	100 Quart Cooler Cover Graphics Kit	168.00	167.00	166.00	165.00
Kit includes: Rappz™ and cooler				(C)	

**Product Size**  
Sizes Vary  
Set-up fee: \$30.00(G)  
Production Lead Time: 4-5 days from final proof approval

**Finished Graphic Size**  
View Online Templates



# SIGNAGE

A wide selection of easy to set up indoor or outdoor displays.

- From traditional A-frames to automated sign wavers
- A variety of display sizes and media options
- Some of the easiest and fastest graphic-changing displays

## Suggested Product Uses

- Schools
- Open Houses
- Real Estate
- Theater Lobbies
- Festivals
- Sidewalk Sales



23.5" x 17.5"



35.5" x 23.5"



27.5" x 21.5"

### LED LIGHT BOXES

**LEDs are a brighter alternative to traditional light boxes, with over 40% energy savings!**

The bright, even lighting consists of LED lights that last over 50,000 hours - over five years of continuous use! The lightweight, aluminum frame can be hung horizontally or vertically to work in any situation.

#### LED Light Boxes

Item #	Description	1	2-5	6-11	12-24
325031	23.5" x 17.5" Kit	280.00	275.00	270.00	265.00
325032	27.5" x 21.5" Kit	385.00	370.00	355.00	340.00
325033	35.5" x 23.5" Kit	545.00	530.00	520.00	500.00

Kits Include: Light Box Frame, Graphic Insert, AC Adapter and Mounting Hardware (C)

Description	Product Size	Finished Graphic Size
23.5" x 17.5" LED Light Box	25.6"W x 19.6"H x .875"D	23.5"W x 17.5"H
27.5" x 21.5" LED Light Box	29.6"W x 23.6"H x .875"D	27.5"W x 21.5"H
35.5" x 23.5" LED Light Box	37.6"W x 25.6"H x .875"D	35.5"W x 23.5"H

Set-up fee: \$30.00(G)

Production Lead Time: 2 days from final proof approval



Snap frame flips open allowing for quick graphic changes.



Single Display  
Chrome Hardware



Triple Display Black Hardware



Flat Base Display  
Chrome Hardware



Express Display  
Chrome Hardware Only

### RECTANGULAR SIGN DISPLAYS

**Promote messages in style with any of these Rectangular Sign Displays.** Available in chrome and black (excluding the Express Display), each sign is double-sided for maximum visibility.

#### Rectangular Sign Displays

Item #	Description	1	2-5	6-11	12-24
400057	Single Display Kit	185.00	180.00	175.00	170.00
400059	Triple Display Kit	415.00	405.00	395.00	380.00
400055	Flat Base Display Kit	170.00	165.00	160.00	150.00
400021	Express Display Kit	143.00	138.00	133.00	128.00

Kit Includes: Hardware and Double-Sided Graphic(s) (C)

Description	Product Size	Finished Graphic Size
Single Display	23.25"W x 55.75"H x 15"D	22"W x 28"H
Triple Display	25"W x 88.5"H x 25"D	(3) - 22"W x 28"H
Flat Base Display	22.25"W x 59.75"H x 10"D	22"W x 28"H
Express Display	15.25"W x 61.5"H x 12"D	14"W x 22"H

Set-up fee: \$30.00(G)

Production Lead Time: 3 days from final proof approval

**Available Frame Colors\*** ☒ Black ☐ Chrome

\*Express Display only available in Chrome





Place in the grass outside voting halls to influence people passing by.



Perfect for displaying information at outdoor events.



Place in a lobby to inform or direct attendees to an event.

## TWIST-UP OVAL A-FRAME

**Highly portable sign display that twists into itself!** Vibrant fabric graphics can be printed with the same or different image on each side for double the exposure.

### Twist-Up Oval A-Frame

Item #	Description	1	2-5	6-11	12-24
210318	Kit	295.00	290.00	285.00	280.00
Kit Includes: Hardware, (4) Ground Stakes, (2) Graphics and Carry Case					(C)

**Product Size** 80.25"W x 33.5"H x 23"D  
**Finished Graphic Size** View Online Template  
 Set-up fee: \$30.00(G)  
 Production Lead Time: 4 days from final proof approval



Twists down to a 34" diameter circle and fits in a heavy-duty carry case with mesh top

## SIGNICADE DELUXE A-FRAME

**Constructed of durable plastic, this A-frame is maintenance-free and weather-resistant, making it perfect for outdoor use.** The frame can be filled with water or sand for increased stability. Fold the frame flat and carry it with the convenient molded handle.

### Signicade Deluxe A-Frame

Item #	Description	1	2-5	6-11	12-24
210121	Single-Sided Kit	185.00	180.00	175.00	170.00
210122	Double-Sided Kit	215.00	210.00	200.00	195.00
Kit Includes: Black or White Hardware and (2) Double or Single-Sided Graphics					(C)

**Product Size** 27"W x 38.5"H x 19"D  
**Finished Graphic Size** 24"W x 36"H  
 Set-up fee: \$30.00(G)  
 Production Lead Time: 3 days from final proof approval



Signs easily slide in and out making graphic changes a breeze!

### Available Frame Colors

☒ Black ☐ White

Tabs keep sign securely in place



## CORRUGATED PLASTIC SIGNS

**These signs provide a simple and inexpensive way to get your message noticed outdoors.** Customize your 4mm corrugated plastic with full-color printing on one or both sides for added exposure.

### Corrugated Plastic Signs

Item #	Description	1	2-5	6-11	12-24
271102	18"W x 18"H - 2 Sides Printed	10.20	10.00	9.40	9.20
271108	24"W x 24"H - 2 Sides Printed	17.30	17.00	15.90	15.60
271111	36"W x 24"H - 2 Sides Printed	27.00	26.00	25.00	24.00
271114	24"W x 18"H - 2 Sides Printed	13.30	13.00	12.20	12.00
Available in White Only					(C)

Set-up fee: \$30.00(G)  
 Production Lead Time: 3 days from final proof approval



### OPTIONAL ADD-ONS

- Installation is easy, quick and economical
- Choose from two designs
- Use clips to attach non-corrugated signage

### Step Stakes & Clips

Item #	Description	1-10	11-20	21-30	31+
381501	Standard Step Stake	2.05	1.85	1.75	1.70
381506	U-Top Step Stake	4.00	3.90	3.80	3.70
381507	Step Stake Clips (Package of 10)	3.35	3.20	3.05	2.90
					(C)



Standard U-Top

Clip



Step Stake sold separately

# EUROFIT FABRIC DISPLAYS

Create a dynamic space that is as unique as your event with the EuroFit Fabric Display line.

- Feature full-bleed dye sublimated graphics on two-way stretch fabric, that contours to each unique frame
- Graphics are viewable from all sides for double the marketing power
- Easy assembly and graphic installation
- View website to see all our full line of EuroFit Products

## Suggested Product Uses

- Art Galleries
- Trade Shows
- Career Fairs
- Media Events
- Backdrops
- In-Store Displays



## EUROFIT STEEL BASE DISPLAYS

Create amazing backdrops or portable privacy walls with this sturdy EuroFit design.

The steel base features a durable powder-coated finish and integrated weld nuts for a solid and stable display. The full-color, double-sided graphic slides on with no need to fasten. Multiple sizes can be arranged together for endless display possibilities.

### EuroFit Steel Base Displays

Item #	Description	1	2-5	6-11	12-24
255110	2' Kit	200.00	194.30	187.60	181.90
255113	3' Kit	275.00	267.00	259.00	250.00
255116	4' Kit	365.00	357.00	343.00	335.00
255119	5' Kit	415.00	406.00	393.00	384.00

Kit Includes: Frame, Graphic and Carry Case

Description	Product Size	Finished Graphic Size
2' EuroFit Steel Base	25.625"W x 91"H x 9.875"D	View Online Template
3' EuroFit Steel Base	37.625"W x 91"H x 9.875"D	View Online Template
4' EuroFit Steel Base	48.875"W x 91"H x 9.875"D	View Online Template
5' EuroFit Steel Base	60.875"W x 91"H x 9.875"D	View Online Template

Set-up fee: \$30.00(G)

Production Lead Time: 4 days from final proof approval



Graphic easily slides over the frame for a quick and simple set up.



The base is raised off the floor by the feet, which create a steady display.



Create a wall to block out distractions, focusing the attention on your message.





Create a backdrop for media events or photo shoots!



Create a semi-private meeting space.



Highly portable and easy to set up anywhere.

## EUROFIT FABRIC DISPLAYS

**Stretch fabric fits smoothly over the freestanding frame creating an upscale display.** Compact when disassembled, these displays are portable and lightweight. The two-sided dye sublimated fabric graphic completes the display with elegance.

### EuroFit Floor Displays

Item #	Description	1	2-5	6-11	12-24
255006	8' Bow Kit	1120.00	1090.00	1060.00	1025.00
255009	10' Bow Kit	1225.00	1195.00	1160.00	1125.00
255016	10' Wave Kit	1225.00	1195.00	1160.00	1125.00
255180	8' Wall Kit	875.00	860.00	835.00	810.00
255013	10' Wall Kit	1185.00	1155.00	1135.00	1115.00

Kit Includes: Frame, Graphic and Carry Case (C)

Description	Product Size	Finished Graphic Size
8' EuroFit Bow	96"W x 89"H x 18"D	View Online Template
10' EuroFit Bow	120"W x 89"H x 18"D	View Online Template
10' EuroFit Wave	121"W x 89"H x 18"D	View Online Template
8' EuroFit Wall	98"W x 91.25"H x 18.875"D	View Online Template
10' EuroFit Wall	123.75"W x 93"H x 13.75"D	View Online Template

Set-up fee: \$30.00(G)  
Production Lead Time: 4 days from final proof approval



Carry Case included

10' Wave



10' Wall



10' Bow

### TABLETOP EUROFITS AVAILABLE ONLINE!

75% lighter than a standard pop-up and compact when disassembled.



## EUROFIT QUICK & EASY SET UP FEATURES



Joints are labeled for accurate step-by-step frame assembly



Push button connectors make it easy to assemble



Two-way stretch fabric contours to the frame for a form fitted look



Heavy-duty zipper secures your graphic keeping it wrinkle-free



Collapses easily to store and transport in a soft carry case



# FLOOR & TABLETOP DISPLAYS

The widest selection of fabric and pop-up displays for floors and tabletops.

- Unique, lightweight fabric displays offer exceptional portability
- Traditional pop-ups featuring full-color mural panels
- Display frames break down to fit into compact carry cases



Kit 342000

Carry Case included

## Suggested Product Uses

- Promo Events
- Hospitals
- Grocery Stores
- Trade Shows
- Presentations
- Business Lobbies

### OPTIONAL ADD-ON



Patent Pending

### Deluxe GeoMetrix Internal Shelves

Item #	Description	1
338050	Internal Shelf	104.00
338068	Clear Internal Shelf	110.00
Shelves can hold up to 15 lbs.		(C)



Kit 342004



Kit 342010

**MORE OPTIONS**  
Available Online

### DELUXE GEOMETRIX FABRIC DISPLAYS

The strong, durable frame allows for multiple banners and shelving so you can conveniently display your product. Aluminum frame and nylon plastic hubs keep your dye sublimated polyester double knit fabric graphics taut. Set up and take down in seconds with pre-installed, wrinkle-resistant graphic banners.

### Deluxe GeoMetrix Fabric Displays

Item #	Description	1	2-5	6-11	12-24
342000	Kit 342000	1365.00	1340.00	1315.00	1290.00
342004	Kit 342004	1155.00	1130.00	1105.00	1080.00
342010	Kit 342010	525.00	515.00	505.00	495.00
Kit Includes: Frame, Graphics, Shelf and Carry Case					
(C)					

Description	Product Size	Finished Graphic Size
Deluxe GeoMetrix Kit 342000	118"W x 89.5"H x 14"D	View Online Template
Deluxe GeoMetrix Kit 342004	90"W x 89.5"H x 14"D	View Online Template
Deluxe GeoMetrix Kit 342010	31"W x 89.5"H x 14"D	View Online Template
Set-up fee: \$30.00(G)		
Production Lead Time: 4 days from final proof approval		





Great for in-store promotions where you need to showcase products.



Ideal for sales aids at meeting and seminars.



Perfect for media events and backdrops.

## KIT OPTIONS



Face Graphic Kit Includes:

- Frame
- Front Graphic Panel
- Carry Case



Wrap Graphic Kit Includes:

- Frame
- Front & Side Graphic Wrap
- Carry Case



10' Straight Floor Display with Wrap Graphic

Carry Case included

## SPLASH FABRIC DISPLAYS

### Converts from a compact unit to an

**impressive backdrop in minutes.** The portable, aluminum frame is lightweight and travel-friendly. Hook and loop hubs make installing the graphic simple. The graphic is printed on wrinkle-resistant polyester knit fabric for a smooth appearance.

### Splash Straight Floor Displays

Item #	Description	1	2-5	6-11	12-24
341040	3' Face Graphic Kit	415.00	400.00	385.00	370.00
341041	3' Wrap Graphic Kit	500.00	485.00	470.00	455.00
341008	10' Face Graphic Kit	1235.00	1215.00	1195.00	1175.00
341009	10' Wrap Graphic Kit	1440.00	1420.00	1400.00	1380.00
341029	20' Wrap Graphic Kit	2160.00	2130.00	2100.00	2070.00

Kit Includes: Frame, Graphic and Carry Case(s)

(C)

Description	Product Size	Finished Graphic Size
3' Straight Display	31"W x 89.5"H x 14"D	View Online Template
10' Straight Display	119"W x 89.5"H x 14"D	View Online Template
20' Straight Display	237"W x 89.5"H x 14"D	View Online Template
Set-up fee: \$30.00(G)		
Production Lead Time: 4 days from final proof approval		



3' Display with Wrap Graphic



20' Display with Wrap Graphic



Pop-up display can be used in unexpected places - like an exhibit!



Create a professional display for in-store promotions.



Creates a perfect backdrop for business presentations.



**MORE  
OPTIONS**  
Available Online

**DELUXE EXHIBITOR EXPANDING DISPLAY**  
Designed to fit any space, this adjustable displays provide you with the flexibility to exhibit anywhere! Vertical and horizontal telescoping poles smoothly adjust to display multiple graphic sizes.

#### Deluxe Exhibitor Expanding Display

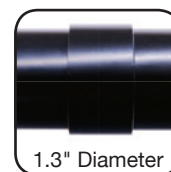
Item #	Description	1	2-5	6-11	12-24
254142	10' Kit	735.00	715.00	695.00	675.00
Kit Includes: Hardware, Graphic and Carry Case					(C)

**Product Size**  
117"W x 98"H x 16.5"D  
Set-up fee: \$30.00(G)  
Production Lead Time: 4 days from final proof approval

**Finished Graphic Size**  
111"W x 95"H



Carry Case  
included



1.3" Diameter

Durable poles feature press joints that allow maximum width extension, keeping your graphic taut.



**MORE  
SIZES**  
Available Online

**SHOW 'N RISE POP-UP DISPLAY**  
Our best selling pop-up display is perfect for regular use at multiple events. To create a vibrant back wall for any presentation, choose from Velcro® receptive fabric or laminated, full-color graphic mural panels.

#### 10' Show 'N Rise Curved Floor Display

Item #	Description	1	2-5	6-11	12-24
339011	Full Mural Panel Kit	2142.00	2091.00	2040.00	1989.00
Kit Includes: Frame & Magnet Rails, Mural Center & End Panels, Graphic Case-to-Counter Kit, Double LED Light Kit, and Display Hard Case w/Wheels					(C)

**Product Size**  
119"W x 92"H x 36"D  
Set-up fee: \$30.00(G)  
Production Lead Time: 3 days from final proof approval

**Finished Graphic Size**  
View Online Template



Shock cord magnet rails make for easy panel placement.



High grade aluminum frame with bayonet locking system ensures a stable display.





Easily promote school clubs and activities.



Lightweight displays that are great for retail promotions.



Provide information on registration tables.

## FAST TRAK DISPLAY

Display features a seamless, lightweight design with an easy clip-on header for a clean, professional presentation. The double-acting hinges create a versatile display that can be used double-sided. For quick set up and tear down, graphics can be left attached. Store display in protective carry case.

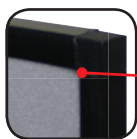
### Fast Trak

Item #	Description	1	2-5	6-11	12-24
146015	6' Fast Trak Kit	595.00	555.00	515.00	475.00
Kit Includes: Display, Graphic Header, (3) Graphic Panels and Carry Case					(C)

Product Size	Panel Graphic Size	Header Size	Header Graphic Size
72"W x 48"H x 22"D	23"W x 34.75"H	24"W x 12"H	22.75"W x 10.75"H
Set-up fee: \$30.00(G)			
Production Lead Time: 3 days from final proof approval			



Velcro® receptive fabric makes changing graphics quick and easy.



Plastic frame has square corners

Carry Case included  
(Color may vary)



Shown with 6' Standard Table Throw with Thermal Imprint

**MORE SIZES**  
Available Online

## MICRO GEOMETRIX DISPLAYS

Create a multi-dimensional tabletop display in seconds! The lightweight, aluminum constructed frame makes for easy transportation, while the dye sublimated polyester double knit fabric ensures your graphic will pop.

### Micro GeoMetrix

Item #	Description	1	2-5	6-11	12-24
337211	Kit 337211	455.00	450.00	445.00	435.00
Kit Includes: 12-quad Horizontal Frame, (8) Graphic Banners and Carry Case					(C)

Product Size	Finished Graphic Size
56.5"W x 42.25"H x 10.75"D	View Online Template
Set-up fee: \$30.00(G)	
Production Lead Time: 4 days from final proof approval	



Washable, wrinkle-resistant fabric keeps your graphics looking clean.



Reinforced graphic corners prevent tearing.

**MORE OPTIONS**  
Available Online



Shown with 6' Standard Table Throw with 57" Dye Sublimated Table Runner (available online)

Carry Case included  
(Color may vary)



# ACCESSORIES

## A great addition to any event, meeting or trade show booth!

- Lights, cases, literature displays and tables are essential for any event
- Large selection of products to choose from
- Great for adding the perfect finishing touch to your display



EuroFit iPad® Stand



EuroFit iPad® and Literature Display



Sail iPad® Stand

## Suggested Product Uses

- Trade Shows
- Entryways
- Hospitals
- Schools
- Job Fairs
- In-Store Promotions

### IPAD® STANDS

**Turn your iPad® into a marketing kiosk.** Vibrant graphic fits tightly over the frame, creating a wrinkle-free look. Each stand has an external safety lock that keeps your technology safe from theft, tampering or breaking. Stand conveniently fits into its own carry case for easy transport.

#### iPad® Stands

Item #	Description	1	2-5	6-11	12-24
230033	EuroFit iPad® Stand Kit	415.00	405.00	395.00	380.00
230030	EuroFit iPad® and Literature Display Kit	415.00	405.00	395.00	380.00
230036	Sail iPad® Stand	275.00	265.00	260.00	255.00

Kit Includes: Hardware, Graphic and Carry Case; Tablet not included  
The EuroFit Stands fit all generations of iPads®, while the Sail Stand is only compatible with the iPad® Air 2

Description	Product Size	Finished Graphic Size
EuroFit iPad®	17.875"W x 50.875"H x 19.375"D	View Online Template
EuroFit iPad® and Literature Display	14.375"W x 51.75"H x 17.5"D	View Online Template
Sail iPad® Stand	10"W x 43.875"H x 22"D	View Online Template
Set-up fee: \$30.00(G)		
Production Lead Time: 4 days from final proof approval		



Presto Easel  
shown with Brilliant  
Board (sold separately)



Jumbo Easel  
shown with rigid sign  
(sold separately)

### EASELS

**Showcase graphics, announcements, presentation boards and more with Easels.** The Presto Easel has contour rubber feet and is constructed from durable metal; allowing it to stand up to more frequent use. Display larger graphics such as light boxes, rigid graphics and sign frames with the sturdy Jumbo Easel.

#### Easels

Item #	Description	1	2-5	6-11	12-24
400011	Presto Easel	55.00	53.00	49.00	47.00
400052	Jumbo Easel	88.00	84.00	79.00	71.00

Soft Carry Case included (C)  
  
Description Product Size  
Presto Easel 38"W x 20"-63.625"H x 32"D  
Jumbo Easel 20"W x 24"-72"H x 16"D  
Hardware Lead Time: Ships same day when ordered before 2 PM CST

### LITERATURE DISPLAY

**Keep your pamphlets and brochures prominently displayed and organized for easy access.** Compact frame is designed to store literature when fully collapsed for easy transporting.



#### Literature Displays

Item #	Description	Pocket	1	2-5	6-11	12-24
230003	Clear View Display	1.34"D	148.00	143.00	138.00	133.00

(C)  
  
Product Size  
10"W x 60.75"H x 11"D  
Hardware Lead Time: Ships same day when ordered before 2 PM CST





**SHOWGOER FOLDING TABLE**  
**Never rent again by owning your own table!**  
 Durable steel frame and molded plastic top fold easily for transport and storage.

**6' Showgoer Folding Table**

Item #	Description	1	2-5	6-11	12-24
280007	6' Folding Table	128.00	125.00	122.00	118.00

**Product Size**  
 72"W x 28.75"H x 29.75"D  
 Hardware Lead Time: Ships same day when ordered before 2 PM CST



**Banner Display Round Hard Case with Wheels**  
 Use with many of our banner displays

**Table Throw Soft Carry Case**  
 Best for unimprinted or thermally imprinted rolled fabric table throws

**SOFT & HARD CARRY CASES**  
**Cases to protect your investment.** Soft Carry Case features 600 denier polyester fabric with shoulder straps. Hard Carry Case features easy grip handles or straps. Cases can ship via UPS, FedEx, airline or motor freight (with proper packaging).

**Carry Cases**

Item #	Description	1	2-5	6-11	12-24
220009G	Table Throw Soft Carry Case	31.00	30.00	29.00	28.00
220024	Round Hard Case w/Wheels	235.00	230.00	225.00	220.00

**Description**      **Product Size**  
 Soft Carry Case    38"W x 5"H x 5"D  
 Hard Carry Case    15"W x 42"H x 18.5"D  
 Hardware Lead Time: Ships same day when ordered before 2 PM CST



**SHOWGOER CASE-TO-PODIUM**  
**Convert this podium into a portable case, so you can take your displays anywhere.** The dye sublimated wrap slides on to create a professional appearance. The durable, roto-molded case has a removable top and built-in tray for easy access to your show materials.

**ShowGoer Case-To-Podium**

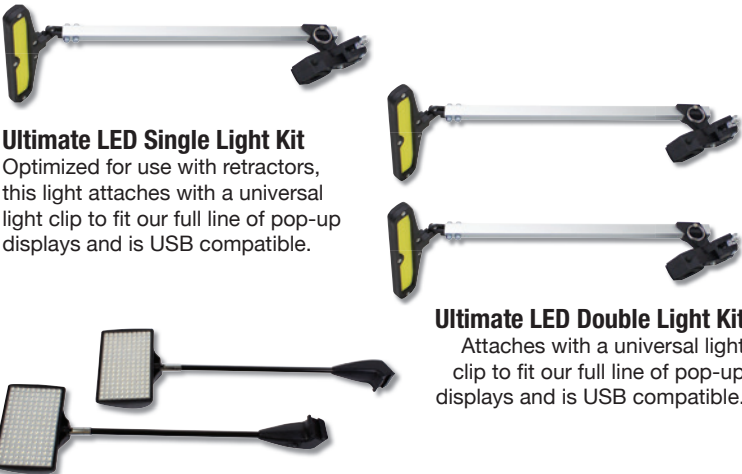
Item #	Description	1	2-5	6-11	12-24
257030	Kit	475.00	465.00	455.00	445.00

Kit Includes: Hardware and Graphic Wrap

**Product Size**      **Finished Graphic Size**  
 38.375"W x 34.875"H x 16.875"D    99.5"W x 35"H  
 Set-up fee: \$30.00(G)  
 Production Lead Time: 4 days from final proof approval



Pull-up handle and high quality wheels make it easy to travel from place to place.



**Ultimate LED Single Light Kit**  
 Optimized for use with retractors, this light attaches with a universal light clip to fit our full line of pop-up displays and is USB compatible.

**Ultimate LED Double Light Kit**  
 Attaches with a universal light clip to fit our full line of pop-up displays and is USB compatible.

**Universal Pop-Up Display Light**  
 Attaches directly to light clips on our full line of pop-up displays.

**LED LIGHTS**  
**Light up your message and increase visibility.**

**LED Light Kits**

Item #	Description	1	2-5	6-11	12-24
150120	Ultimate LED Single Light Kit	125.00	121.00	116.00	113.00
150121	Ultimate LED Double Light Kit	240.00	235.00	230.00	220.00
150100	Universal Pop-Up Display Double Light Kit	265.00	257.00	246.00	239.00

Hardware Lead Time: Ships same day when ordered before 2 PM CST



**TABLE  
COVERS**  
page 2



**RETRACTABLE  
BANNERS**  
page 6



**BANNER DISPLAYS**  
page 10



**BANNERS  
& FLAGS**  
page 12



**TENT & EVENT  
PRODUCTS**  
page 18



**SIGNAGE**  
page 22



**DISPLAYS**  
page 24



**ACCESSORIES**  
page 30

**WE'VE ADDED MORE THAN 50  
NEW PRODUCTS THIS YEAR!**



**GET YOUR  
PRODUCTS  
FASTER!**

**WITH OUR QUICK SHIP SERVICES**



Event Tents



Table Covers



Splash



Sail Signs

**Distributed by:**

**24 & 48  
HOUR**



**QUICK  
SHIP**

View website to order and for  
complete Quick Ship Program  
requirements and ordering  
information.

Valid through December 31, 2016