

Everyday Impress Banner Display

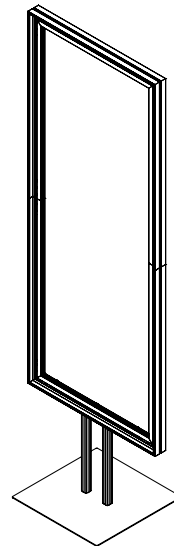
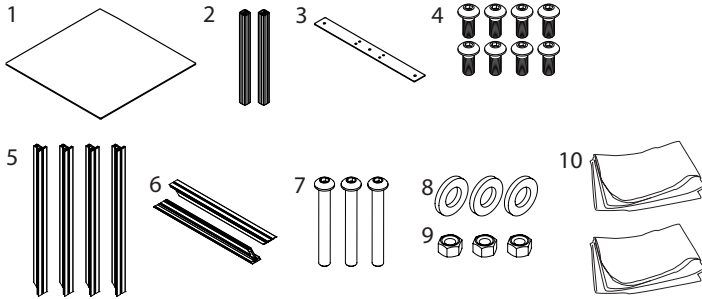
Product Parts

Base

- 1 - Foot (x2)
- 2 - Legs (x2)
- 3 - Bracket
- 4 - Machine Screws (x8)

Frame

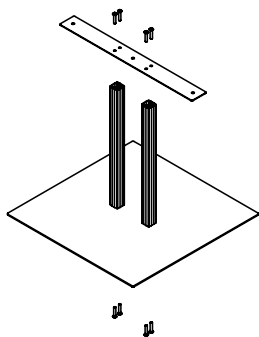
- 5 - Vertical Bars (x2)
- 6 - Horizontal Bars (x4)
- 7 - Buttonhead Screws (x3)
- 8 - Washer (x3)
- 9 - Nuts (x3)
- 10 - Graphic (x2)



Display Set-Up

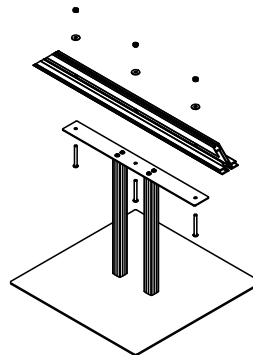
Step 1

Assembly base by aligning feet with base and inserting machine screws through base and bracket and into feet. Tighten with supplied allen wrench.



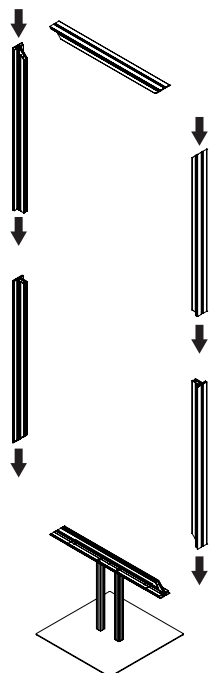
Step 2

Attach horizontal bar with holes to base by inserting buttonhead screws through base bracket and horizontal bar. Put washer through screw and tighten using the supplied nuts.



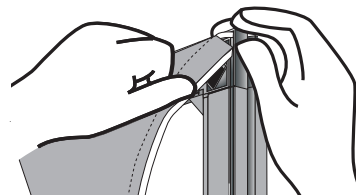
Step 3

Follow below diagram by inserting remaining bars into their brackets. Use smaller allen wrench to tighten hex screws on vertical bars to secure rails.



Step 4

Start by installing fabric graphic into each corner. The graphic fits into frame by inserting gasket into the extrusion channel.



Step 5

Once each corner is secure, work towards the center on each side, using your thumbs to smooth the gasket.

