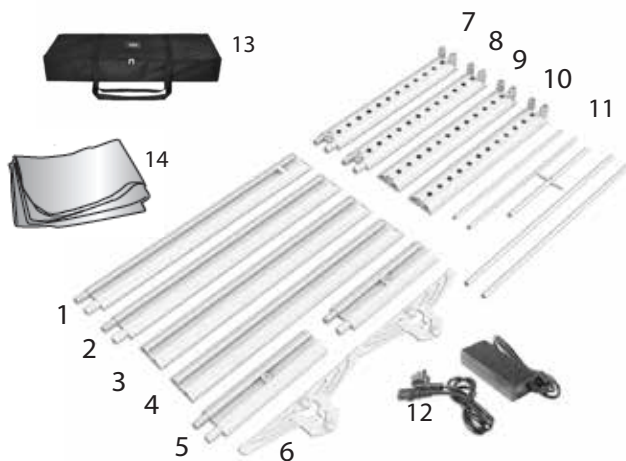


# 5' Astra Display

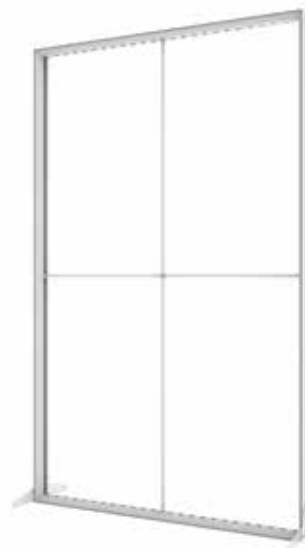
## Product Parts

1. Bottom Left
2. Bottom Right
3. Top Left
4. Top Right
5. 8' extension (x2)
6. Foot (x2)
7. Bottom A
8. Top A
9. Bottom B
10. Top B
11. Support Bars (x5)
12. Power Supply
13. Soft Case
14. Graphic (x2)



*Be Advised Pieces easily removable  
before graphic installation. If moving display after  
set-up hold from bottom section*

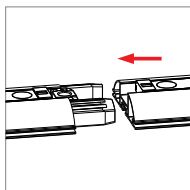
*Symbols on hardware  
match corresponding pieces*



## Display Set-up

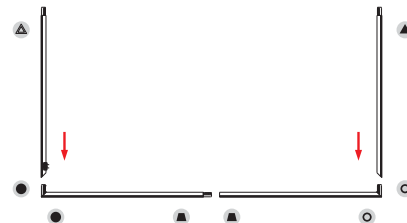
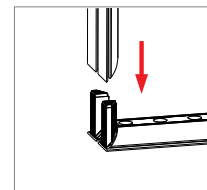
### Step 1

Attach the Bottom Sections A & B (7 & 9) and place on floor.



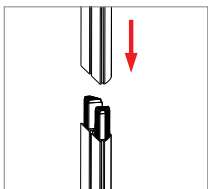
### Step 2

Connect Bottom Left (1) & Bottom Right (2) sections to Bottom A & B sections (7 & 9).

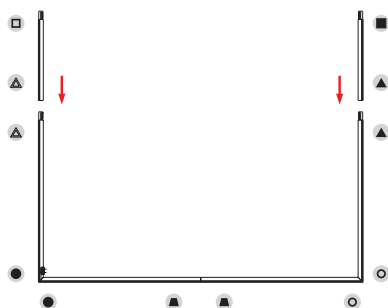


### Step 3

If using an 8' display attach 8 foot extensions (5) to Bottom Left & Right (1 & 2).

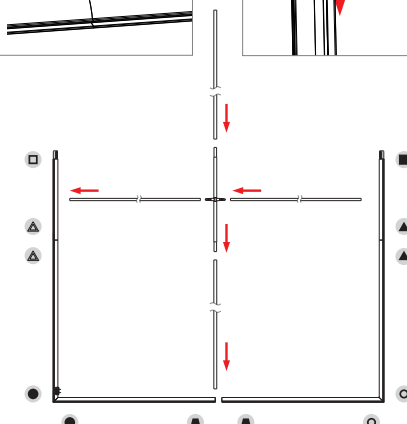
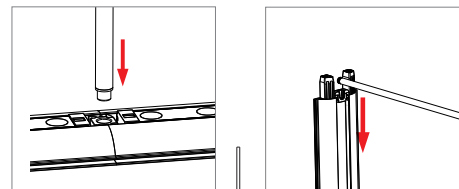


Skip this step for 6.5' height.



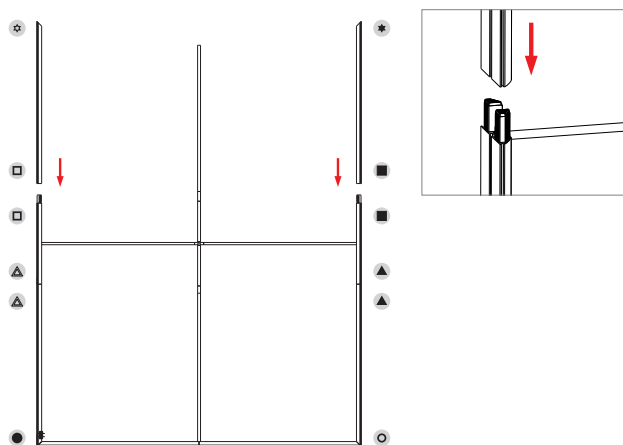
### Step 4

Attach the support bars (11) as shown.



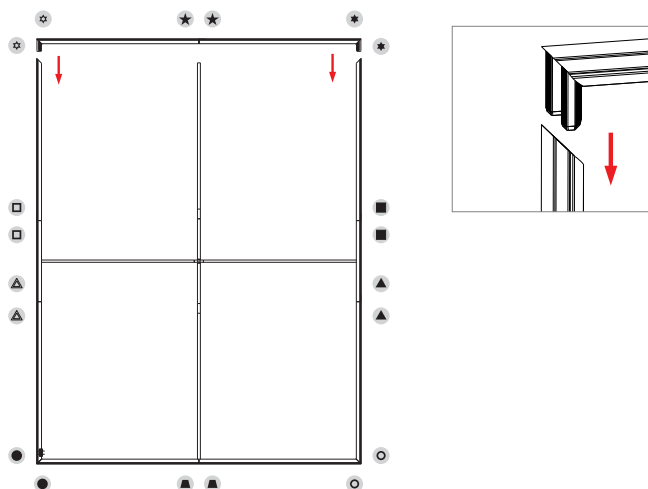
## Step 5

Gently lay down the display and attach Top Left (3) & Top Right (4) pieces.



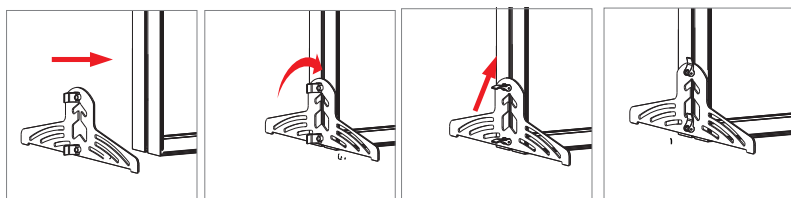
## Step 6

Attach the remaining Top A & B sections (8 & 10) to Top Left (3) & Top Right (4).



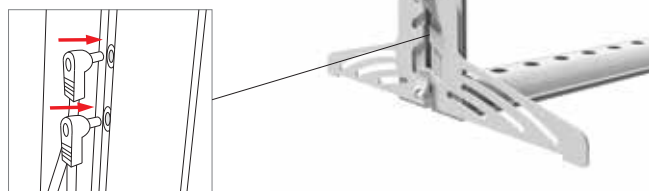
## Step 7

Stand the display up. Carefully slide the feet (6) knob into the groove on the display. Turn & press to lock.



## Step 8

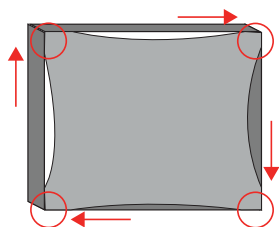
Plug the Power Supply (12) into the display. Plug in can be found near base next to left or right foot.



## Graphic Installation Process

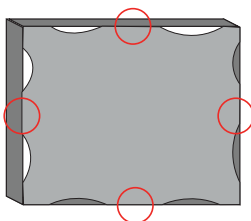
### Step 1

Start with the corners. Working in a clockwise motion insert each corner of the graphic into the frame.



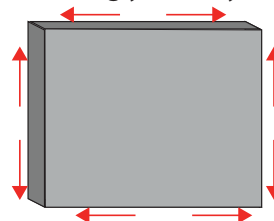
### Step 2

Move to the centers. Insert the centers of the graphic on each side of the frame.



### Step 3

Complete installation. Insert the remaining portions of the graphic into the frame starting from the center points and working your way to the corners.



## Storage & Care

Place all Frame parts into Carry Case and store in a cool dry location. To clean non-graphic hardware, wipe with a damp cloth. Do NOT dry clean graphic, can Steam Clean wrinkles.