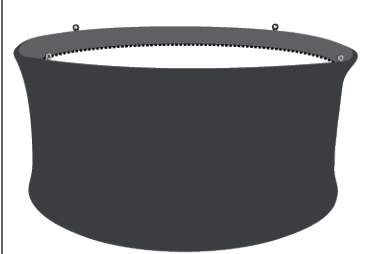
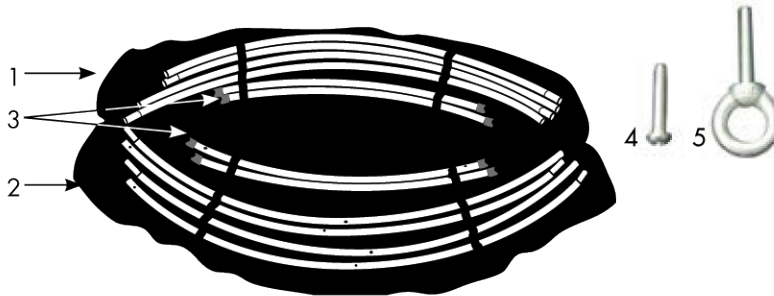


# EuroFit Fabric Hanging Banner Displays - Round

## Product Parts (6FT HARDWARE SHOWN) QTY for other frames in STEP 1.

- 1 - Top Frame Bars (x4)\*
- 2 - Bottom Frame Bars (x4)\*
- 3 - Vertical Bars (x4)\*
- 4 - Bottom Screws (x4)\*
- 5 - Eye Bolt (x4)\*



**Hanging Cables not included.**  
Most convention centers will require you to use their hanging hardware.

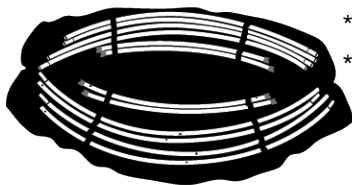
INSTRUCTION DRAWINGS SHOW 6FT DISPLAY.

## Display Set-Up

Recommended for indoor use only.

### Step 1

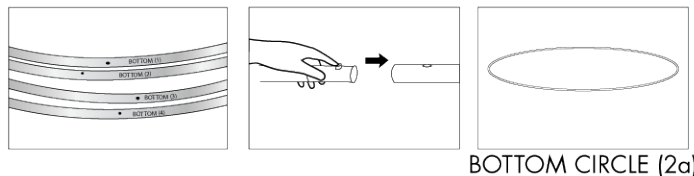
Take all parts out of the bag.



Frame	Parts QTY
4' Round Sm	(x4)
* 6' Round Sm	(x6)
* 6' Round	(x4) as shown
* 8' Round	(x5)
10' Round	(x6)
12' Round	(x7)

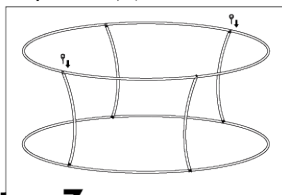
### Step 3

Repeat this assembly with the Bottom Frame Bars (2).



### Step 5

Place the assembled Top Circle (1a) on top to create unit. Place a few Eye Bolts (5) in to secure briefly.



**Hanging Cables not included.**  
Most convention centers will require you to use their hanging hardware.

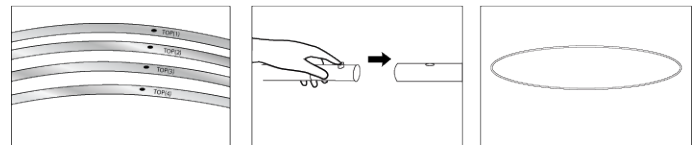
### Step 7

Secure the outside of the Fabric Graphic to Frame by feeding the Eye Bolt (5) into the hole from the Fabric Graphic and then through the hole in the Top Frame Bars (1). Tighten into the Top Circle (1a) at each of the Vertical Bar (3) locations.



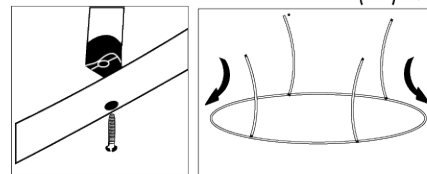
### Step 2

All Frame pieces should be labeled. Lay the Top Frame Bars (1) in a circle in numerical order. Connect all the bars into a circle by placing the tapered end of the 1st bar into the large end of the next bar until the release button snaps into place.



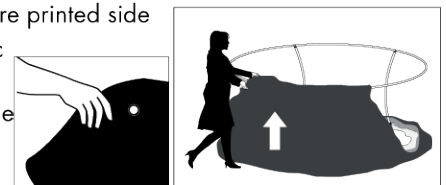
### Step 4

Place the assembled Bottom Circle (2a) on the floor with the release buttons facing up. Align each Vertical Bar (3) with the center holes of the Bottom Circle (2a). With the curve of the Vertical Bars towards the center, fasten them in place using the Bottom Screws (4).



### Step 6

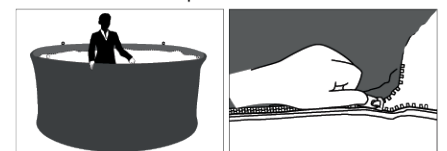
Unzip your graphic and place the Bottom Circle (2a) within the graphic. NOTE: make sure printed side is facing out and graphic is facing up. Locate the reinforced holes along the top edge of the Graphic, and line them up with each Vertical Bar (3).



**NOTE: WHEN POSITIONING FABRIC AROUND THE FRAME CAREFULLY LIFT AND REPOSITION- DRAGGING FABRIC CAN CAUSE SNAG.**

### Step 8

Step inside the frame. With the outside of the Fabric Graphic now connected to the Frame, zipper together the inside of the Fabric Graphic to the outside of the Fabric Graphic.



## Storage and Care

Place all product parts into Carry Case and store in a cool dry location. Machine wash on gentle cycle using mild detergent. Tumble dry on low heat setting only. Do Not dry Clean, Do Not iron.