

# Air Column Display

## Product Parts

- 1 - Inflatable Column
- 2 - Graphic
- 3 - Base
- 4 - Electric Pump

## Optional Items

- 5 - Hand Pump



## OPTIONAL ITEM



## Setup

### Step 1

Remove all parts from shipping box, and set on a clean flat surface. Verify you have the items listed above.

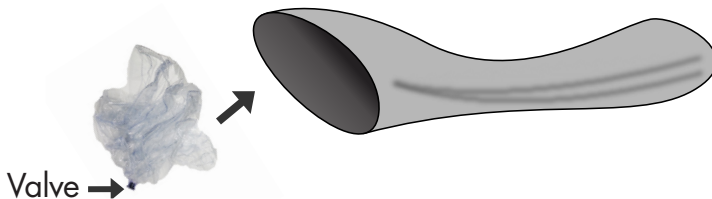
### Step 2

Unscrew the cap on the top of the Base (3) and fill with sand or water. *(if desired)*



### Step 3

Insert the Air Column (1) inside the Graphic (2) with the valve facing the bottom of the graphic.



### Step 4

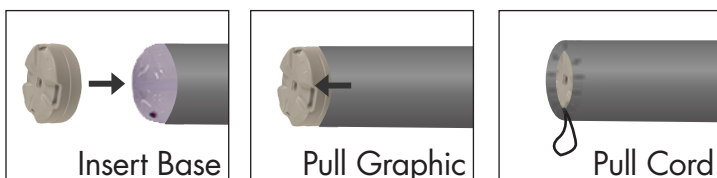
Inflate the Air Column (1) by first opening the valve on the bottom. Plug in the Electric Pump (4) and insert the hose into the valve on the Air Column (1). Turn on pump. Inflate until firm. Close the Valve.

**\*DO NOT OVER INFLATE**



### Step 5

Set the Air Column (1) on its side. Carefully set the Base on its side and slide it into the bottom of the Graphic (2). Pull the Graphic (2) over the base and pull the draw string cord until snug.



## Storage & Care

Store in a cool, dry place, away from direct sunlight. To Clean, wipe with a damp clean cloth.