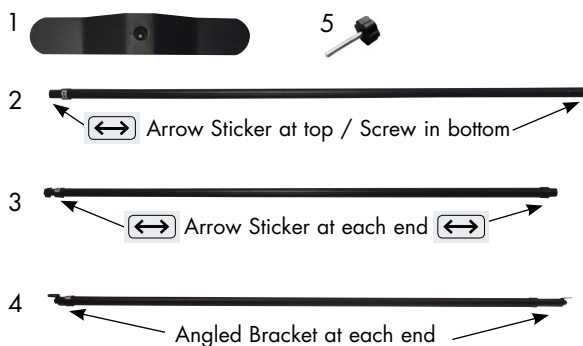


Scan to view Product Instructional Video or visit:
www.creativedisplaysite.com/sleekexhibitor.html



Product Parts

- 1 - Foot (x2)
- 2 - Vertical Telescoping Pole (x2) with screw installed (see step 7)
- 3 - Lower Horizontal Telescoping Pole
- 4 - Upper Horizontal Telescoping Pole
- 5 - Knobbed Fastener (x4)



Display Set-Up

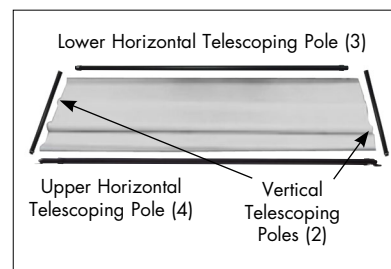
Step 1

Remove the parts from the bag and place on a clean, flat surface, along with your banner face down. Loosen each of the Vertical Telescoping Poles (2) by twisting the sections away from the tension to easily telescope.



Step 2

Position the Vertical Telescoping Poles (2) and Horizontal Telescoping Poles (3,4) around your banner to "frame" the banner.



Step 3

Extend the Lower Horizontal Telescoping Pole (3) to the width of your banner and twist the sections to tighten. Fully insert it into the bottom pole pocket.



Step 4

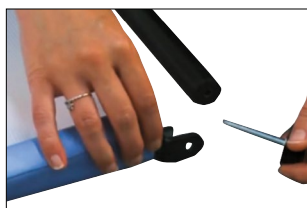
Insert a Knobbed Fastener (5) through the hole located on the bottom of the Vertical Telescoping Pole (2) and into the threaded hole on one end of the Lower Horizontal Telescoping Pole (3).



*If the hole on the Vertical Telescoping Pole (2) is blocked, extend the pole a little so the hole is accessible.

Step 5

Extend the Upper Horizontal Telescoping Pole (4) to the width of your banner, twist the sections to tighten and insert into the top pole pocket. Connect the Upper Horizontal Telescoping Pole (4) and a Vertical Telescoping Pole (2) by inserting a Knobbed Fastener (5) through the Angled Bracket and into the threaded hole in the Vertical Telescoping Pole (2).



Step 6

Repeat Steps 4 and 5 for the other side of the banner.

Display Set-Up Continued...

Step 7

Once all poles are fastened, remove the screw from the bottom of a Vertical Telescoping Pole (2). Insert the pole into the hole located on the Foot (1).



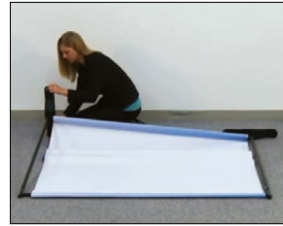
Insert the screw through the hole in the Foot (1) and fully secure with a phillips head screw driver.



Repeat these steps to attach the Foot (1) to the other side of the display.

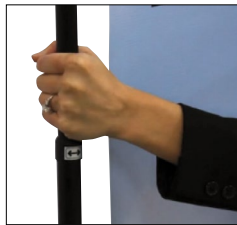
Step 8

Rotate the Feet (1) so that they are parallel to the Vertical Telescoping Poles (2) and lift the display to an upright position.



Step 9

If your banner seems loose or saggy, simply lift the Upper Horizontal Telescoping Pole (4) and turn the sections of the Vertical Telescoping Poles (2) counterclockwise and lock in place when banner is taut.



Storage

Place all product parts into Carry Case and store in a cool dry location.



Care

Hardware Care: Clean, wipe with damp cloth.

Fabric Graphic Care: Machine Wash Cold Gentle. Cycle Air Dry Only. Do NOT Dry Clean. Do NOT Iron.



Warranty Information: All products are designed to provide the user with a cost-effective and durable product. Standard warranty is a 'one year parts and labor' warranty which warrants product against defects in material and workmanship. It does not cover damage due to accidents, abuse, or normal wear and tear. Products found to be defective will be replaced or repaired at factory's discretion.