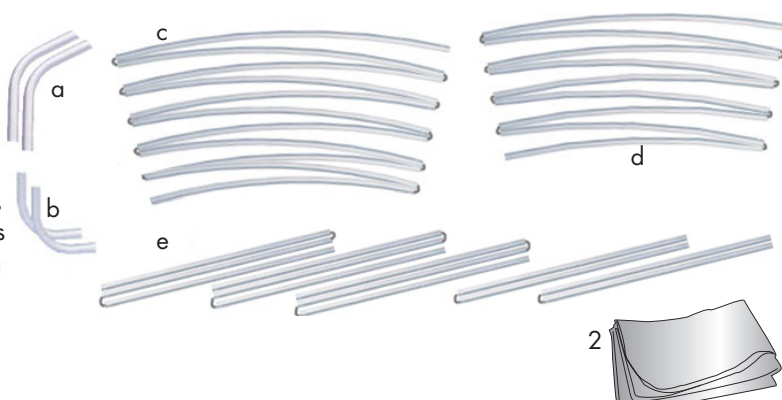


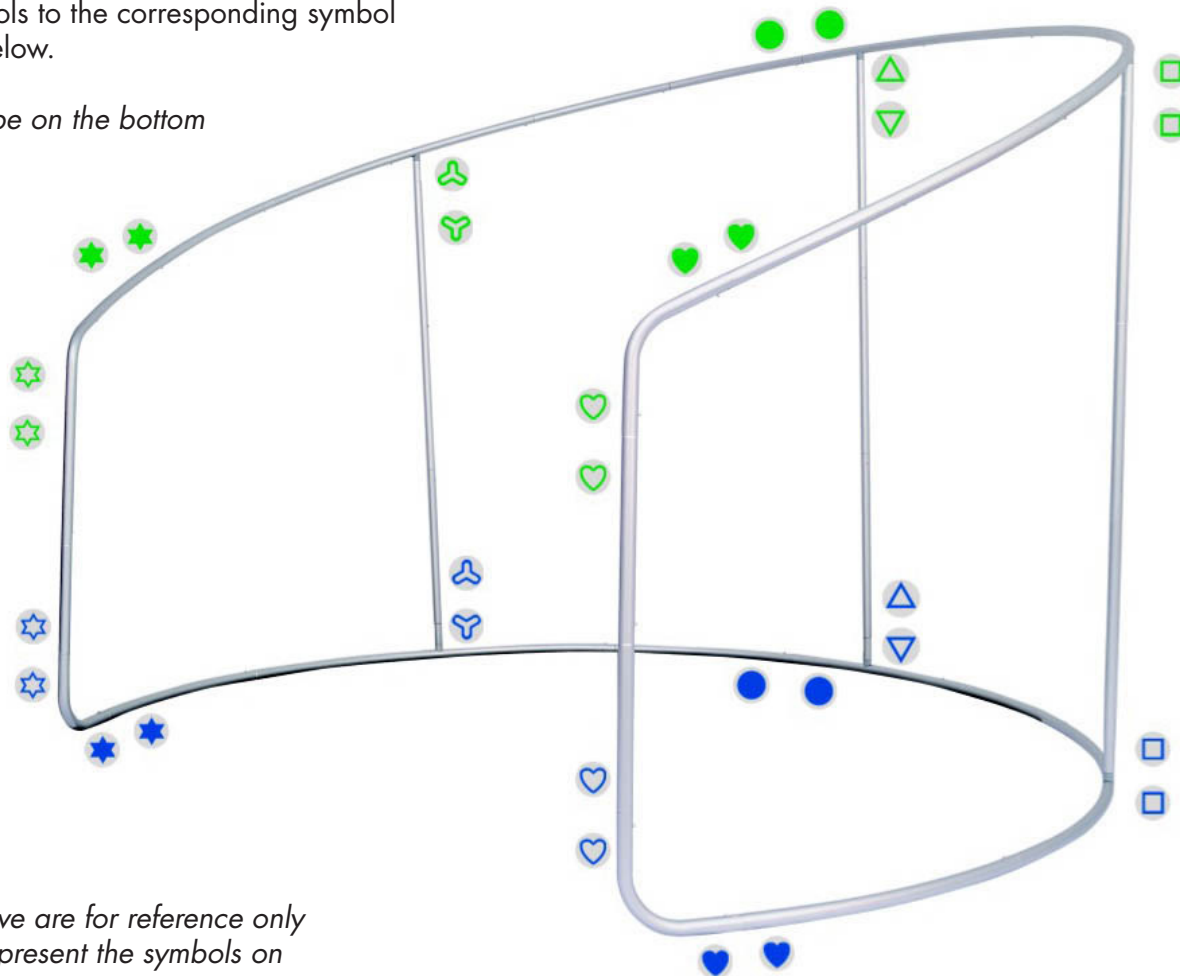
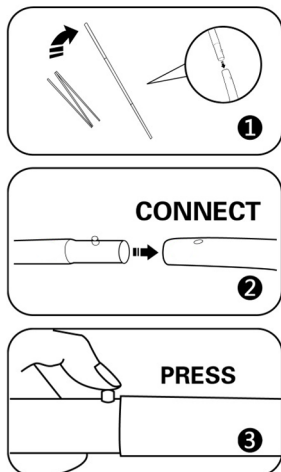
Product Parts**1 - Hardware**

- a - Top Angle Poles
- b - Bottom Angle Poles
- c - Top Shock-Corded Poles
- d - Bottom Shock-Corded Poles
- e - Verticle Shock-Corded Poles
(3- 3pc. & 2- 2pc.)

2 - Graphic**Hardware Assembly****Step 1**

Open all parts to the hardware and assemble the parts by matching up the symbols to the corresponding symbol illustrated in the image below.

All the blue symbols will be on the bottom of the display.

**NOTE:**

Symbols represented above are for reference only and do not necessarily represent the symbols on your hardware.

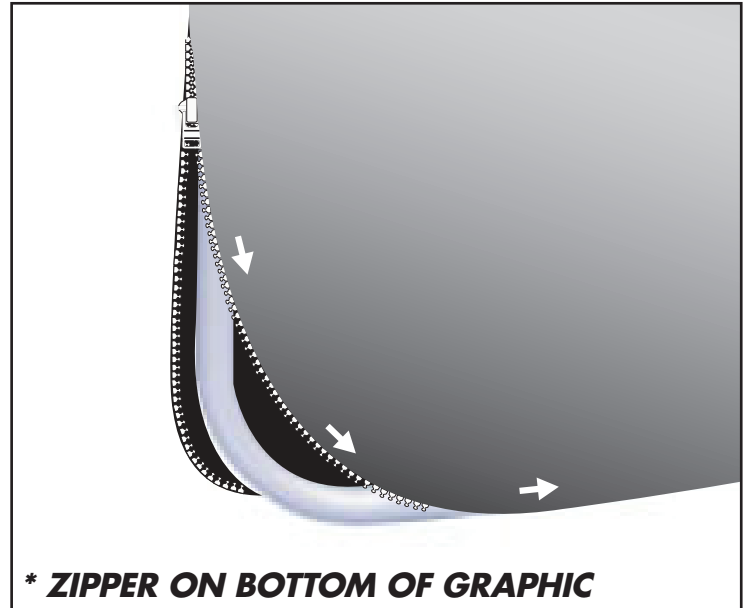
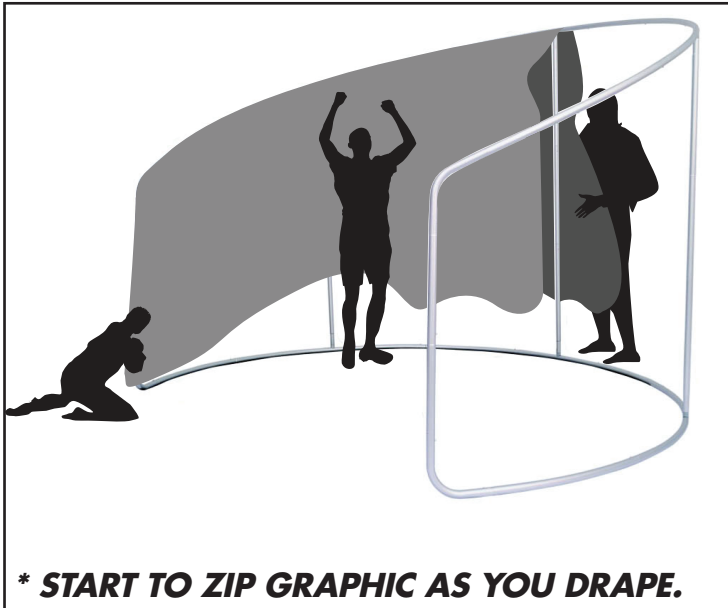
Graphic Setup

Step 1

Set the assembled hardware on a clean surface.

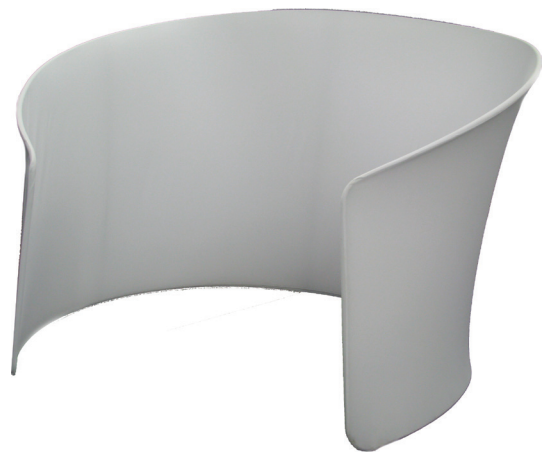
Locate the left side of the graphic. Slide the left side of the frame into the left side of the graphic. With two or more people, start to drape the graphic over the top edge, beginning on the left side of the hardware, so that the seam rides along the top curved pole.

As you drape the graphic to the right, start to zip the graphic (zipper on bottom of graphic) to the hardware as you move further down the frame



NOTE:

The graphic is designed to fit the hardware precisely, as a result the graphic may appear to be too tight during the installation process (this is normal).



Storage

Store in a cool dry location.

Care

Machine wash cold, gentle cycle. Air Dry Only

Warranty Information: All products are designed to provide the user with a cost-effective and durable product. Standard warranty is a 'one year parts and labor' warranty which warrants product against defects in material and workmanship. It does not cover damage due to accidents, abuse, or normal wear and tear. Products found to be defective will be replaced or repaired at factory's discretion.