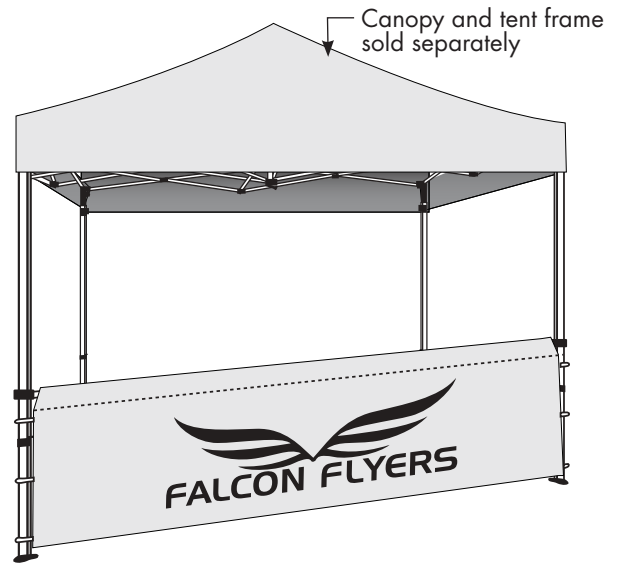


# Half Wall

240336 thru 240347, 240171, 240175, 240179, 240185, 240393, 240394, 240395

## KITS\*:

Item #	NAME
240336	10' Half Wall BLANK with Standard Bar Kit
240337	10' Half Wall BLANK with Deluxe Bar Kit
240338	10' Half Wall BLANK with Premium Bar Kit
240339	10' Half Wall Thermal Imprint with Standard Bar Kit
240340	10' Half Wall Thermal Imprint with Deluxe Bar Kit
240341	10' Half Wall Thermal Imprint with Premium Bar Kit
240342	10' Half Wall Dye Sub Full Color with Standard Bar Kit
240343	10' Half Wall Dye Sub Full Color with Deluxe Bar Kit
240344	10' Half Wall Dye Sub Full Color with Premium Bar Kit
240345	15' Half Wall BLANK with Deluxe Bar Kit
240346	15' Half Wall Thermal Imprint with Deluxe Bar Kit
240347	15' Half Wall Dye Sub Full Color with Deluxe Bar Kit



### NOTE:

\*Stabilizing bar and Clamps come with KIT only.

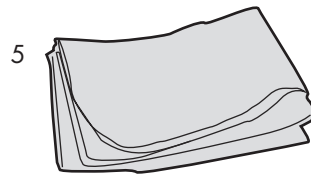
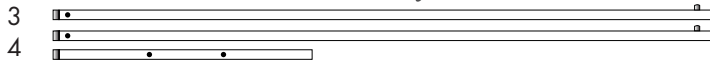
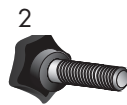
## WALLS ONLY:

Item #	NAME	IMPRINT	METHOD
240171	10' Half Wall	NONE-WHITE	N/A
240175	10' Half Wall	Single Sided	Thermal
240179	10' Half Wall	Single Sided	Full Color Dye Sub
240185	10' Half Wall	Double Sided	Full Color Dye Sub
240393	15' Half Wall	NONE-WHITE	N/A
240394	15' Half Wall	Single Sided	Thermal
240395	15' Half Wall	Single Sided	Full Color Dye Sub

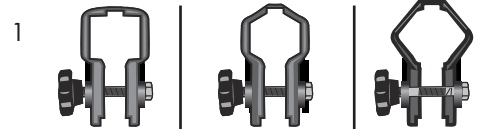
## Display Set-Up (NOTE: the following steps are for the KIT #'s )

### Product Parts

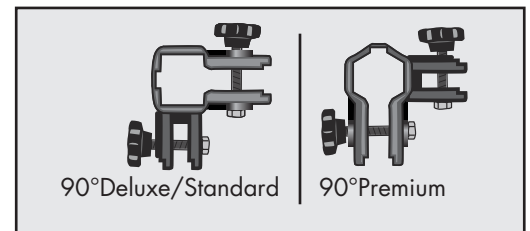
- 1 - Molded Plastic Clamps (see options) qty: 2
- 2 - Bolt Handle qty: 2
- 3 - Long Bar qty: 2
- 4 - Short Bar qty: 1
- 5 - Half Wall



### Clamp Options



Deluxe/Standard | Premium LEFT | Premium RIGHT



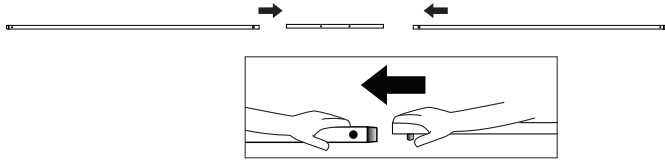
90°Deluxe/Standard | 90°Premium

90° options sold separately

## Assembly Continued

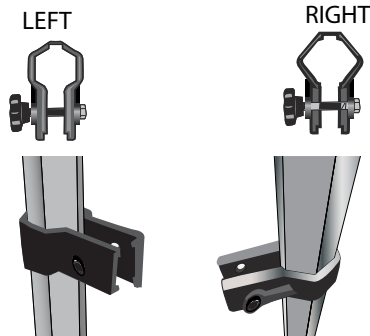
### Step 1

Insert end of Long Bar (3), while pushing down the button, into one end of the Short Bar (4). Verify that the release button clicks into place. Repeat for other end. NOTE: the button will be on the underside of your stabilizing bar.



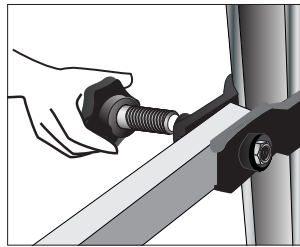
### Step 2\_NOTE:

Please note: The premium tent Molded Plastic Clamps (1) are molded to ensure the correct fit around the hexagon tent leg. Verify that you have the correct Clamp on the correct tent leg.



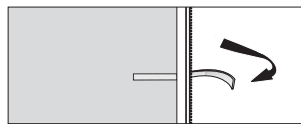
### Step 4

Insert Bolt Handle (2) through the hole on the Molded Plastic Clamp and the stabilizing bar. Secure to the threaded insert on the Molded Plastic Clamp.

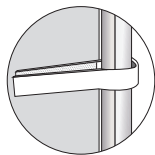


### Step 6

Loop all straps around each leg of the tent Frame and secure to loop Velcro™ that is sewn to the Half Wall (5).



NOTE: straps fit best when velcro™ strips are aligned flush to one another.



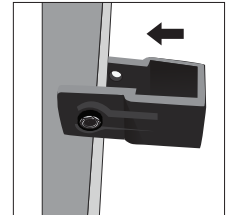
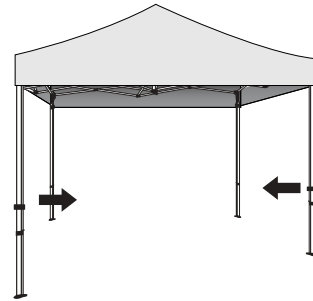
## Storage and Care

Wipe clean with a damp cloth. Store in a cool, dry place.

### Step 2

On existing tent frame, place one of the Molded Plastic Clamps (1) around the leg. The open end of the Molded Plastic Clamp (1) should face towards the other tent leg you want the stabilizing bar to span. Clamp threaded inserts should face toward inside of tent\*\*\*

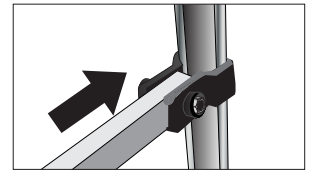
Repeat for opposite tent leg. (See Step 2 note for Premium tent)



Deluxe/Standard

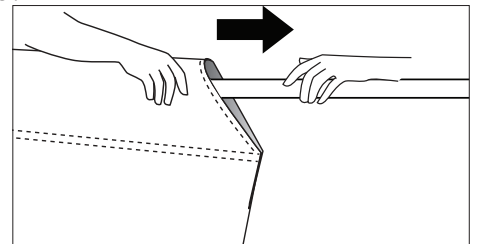
### Step 3

Insert one end of the stabilizing bar (created in Step 1) into one of the Molded Plastic Clamp (1)



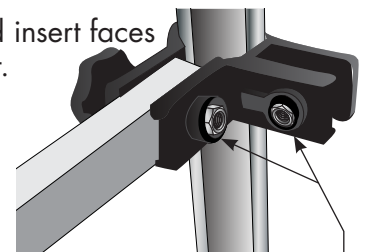
### Step 5

With one end of the stabilizing bar secure, insert bar into the pole pocket on the Half Wall (5). Once fully on, secure bar to other tent leg Molded Plastic Clamp, as shown in Step 5.



## INSTALL NOTE

\*\*\* Make sure threaded insert faces toward inside of the tent.



THREADED INSERT