

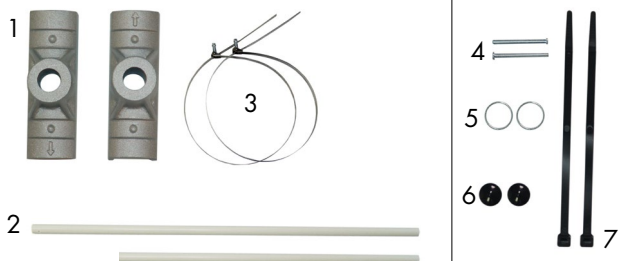
S-Shaped Boulevard Banner

Product Specifications

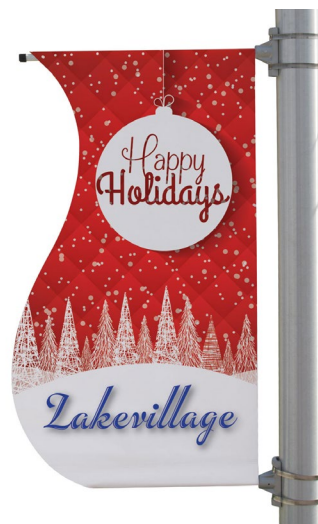
Graphic sizes will vary - *Do not Exceed 24 square feet*
Graphic Finishing: 3" Top and Bottom Pole Pockets with #2 Grommets

Product Parts

- 1 - Castings (x2)
- 2 - Fiberglass Pole
- 3 - 40" Stainless Steel Bands (x4)
- 4 - Pins (x2)
- 5 - Rings (x2)
- 6 - End Caps (x2)
- 7 - Nylon Ties (x2)



*Screw/nut driver will be needed for setup



Set-Up

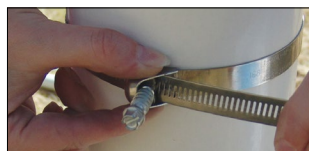
Step 1

Attach top Casting (1) to pole. Be sure the arrow is facing up - away from the banner.

Secure the top Casting (1) to the Pole with two Stainless Steel bands (3). If attaching to a square or other shaped pole, it is recommended to use an additional set of bands, available separately. Tighten the bands until they hold the bracket securely and lock it into place with a screw or nut driver. Be sure the Band head is on the side of the pole and not on the casting. Clip off any excess band length.



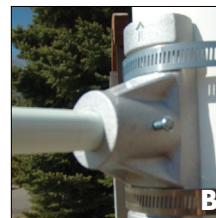
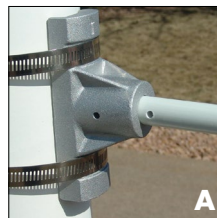
Note: On the Top Casting the arrow is facing away from banner



DO NOT use a power tool to tighten the stainless steel bands! Over tightening will cause damage.
Installation section: Do not over tighten the bands. Do not exceed 30 IN pounds of torque.

Step 2

Insert the end of the larger Fiberglass Pole (2) with the hole in it into the top Casting (1) Image A. Line up the holes on the Pole to the holes on the sides of the Casting. Secure by inserting a Pin (4) through the holes in the Casting and the Pole as shown in Image B. Attach a Ring (5) through the hole at the end of the Pin (4) Image C.



Step 3

Place Rubber Cap (6) over the end of the Fiberglass Pole (2).



Step 5

Slide your banner onto the Fiberglass Poles (2).

Secure the banner on the top and bottom by threading a Nylon Tie (7) through the Ring (5) and the grommet on your banner.



Step 4

Measure the length of your banner to determine where to place the Lower Casting.

Repeat Step 1 - 3 to attach the Lower Casting (1) and shorter Fiberglass Pole (2). Be sure the arrow is facing down - away from the banner.



Note: On the Bottom Casting the arrow is facing away from banner

Warranty Information: All products are designed to provide the user with a cost-effective and durable product. Standard warranty is a 'one year parts and labor' warranty which warrants product against defects in material and workmanship. It does not cover damage due to accidents, abuse, or normal wear and tear. Products found to be defective will be replaced or repaired at factory's discretion.