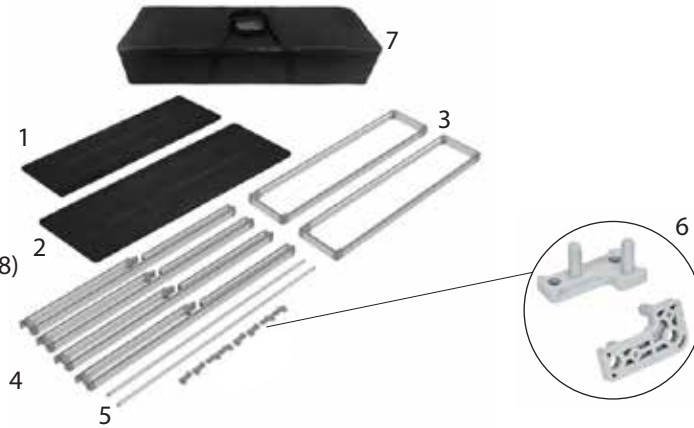


# Journey Counter Kit

## Product Parts

1. Middle Shelf
2. Counter Top
3. Side Panels
4. Top & Bottom Frame
5. Support Bars
6. 90° Corner Connectors A & B (x8)
7. Soft Case

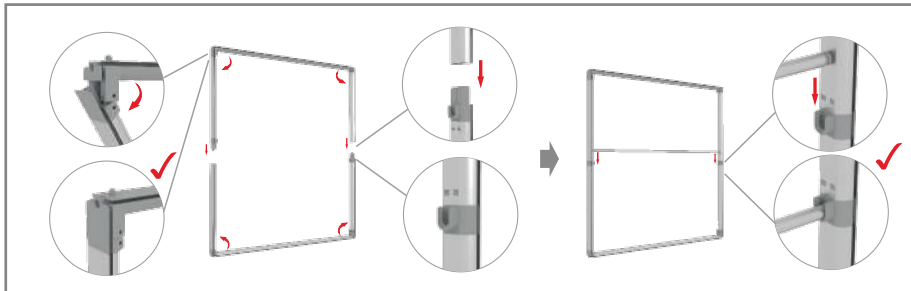


## Display Set-up

### Step 1

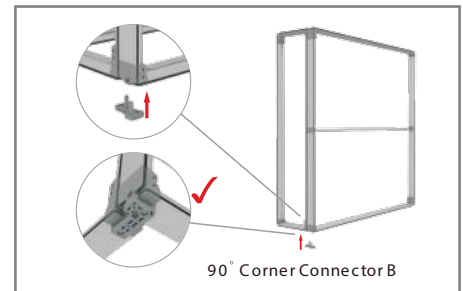
Unfold Bottom and Top Frame pieces (4). Insert the top connector onto the bottom connector.

Attach the middle Support Bar (5) to each frame section.



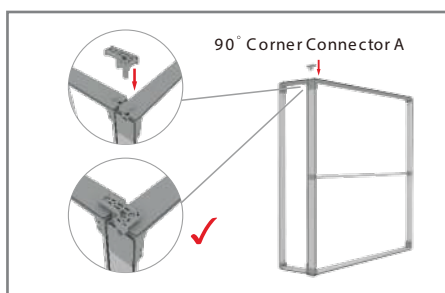
### Step 2

Insert the 90° connector to the bottom of one side of the display. Attach the side wall to the 90° connector



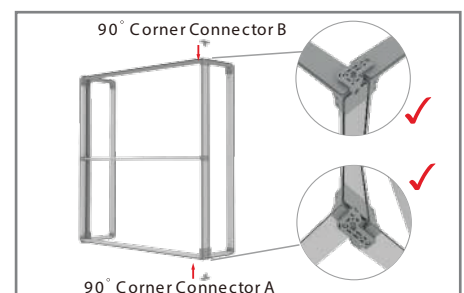
### Step 3

Connect a 90° connector to the top, attaching to both the top and side panel.



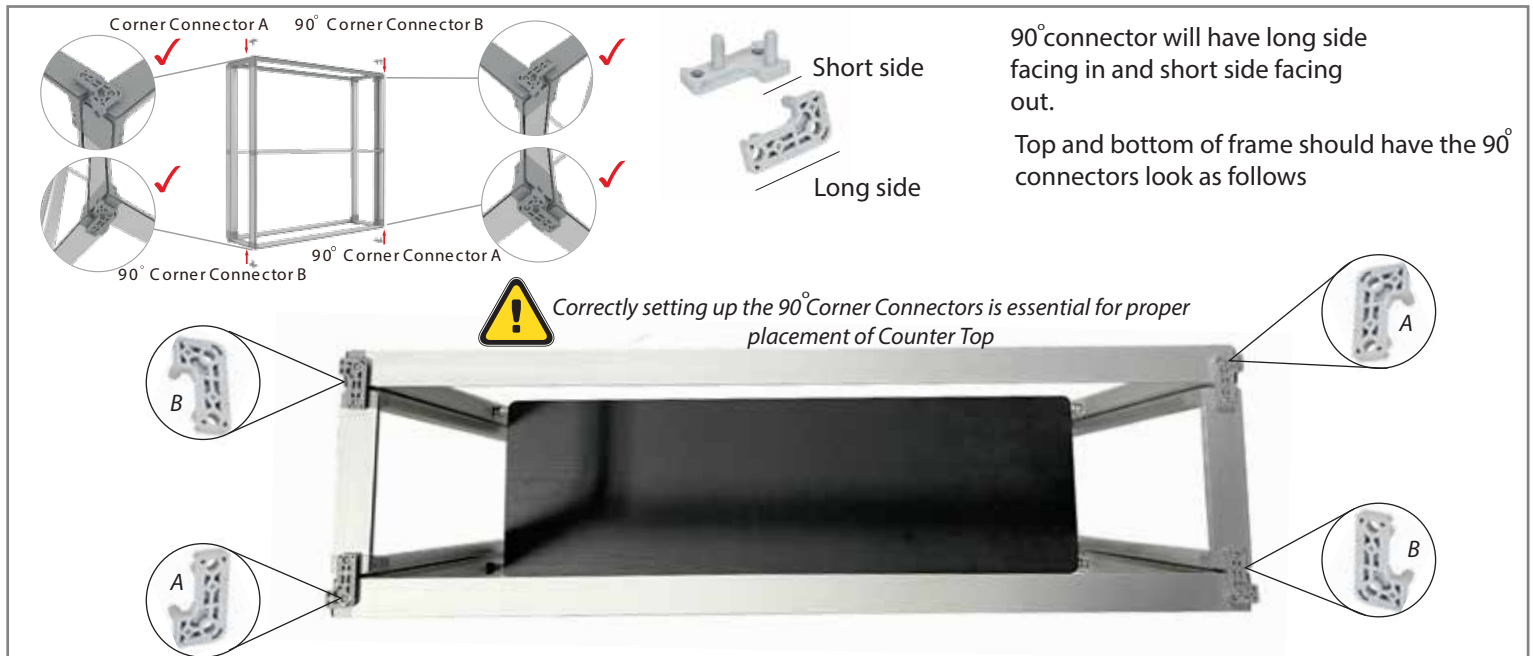
### Step 4

Repeat steps 2 & 3 for the opposite side using Connectors A & B respectively



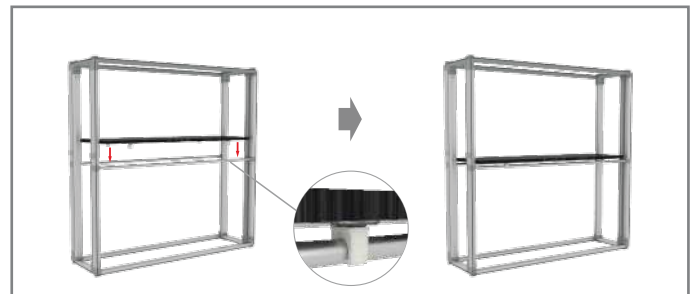
## Step 5

Repeat step 1 using remaining Top and Bottom Frame (4). Attach the Top & Bottom Frame (4) using the remaining 90° connectors (6).



## Step 6

Add middle shelf (2) by pressing down until the clamps are secure onto the support bars (5).



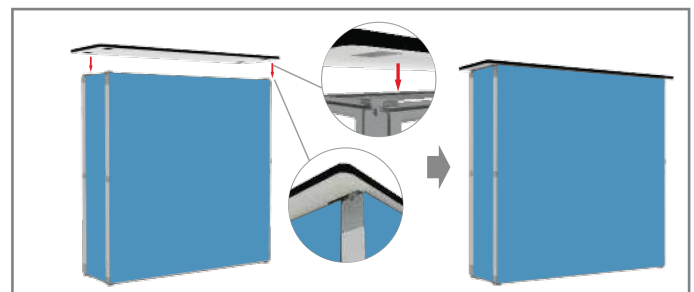
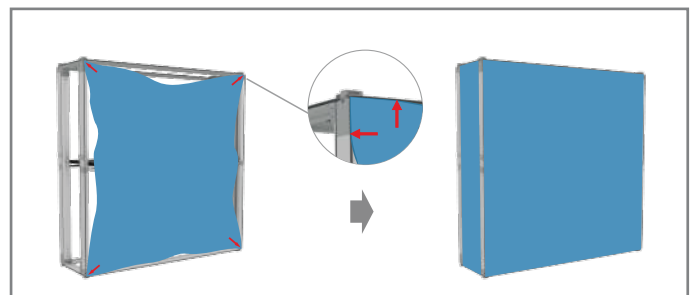
## Step 7

Insert each corner of the front & side graphics into each corner of the front & sides of the frame. Insert the centers of the graphics and remaining portions.

## Step 8

Once the graphics are secure place the Counter Top on top. The slots in the Counter Top should slide easily onto the 90° connectors.

If Counter Top is not fitting, remove Counter Top and adjust 90° connectors to match the example in step 5.



## Storage & Care

Place all Frame parts into Carry Case and store in a cool dry location. To clean non-graphic hardware, wipe with a damp cloth.