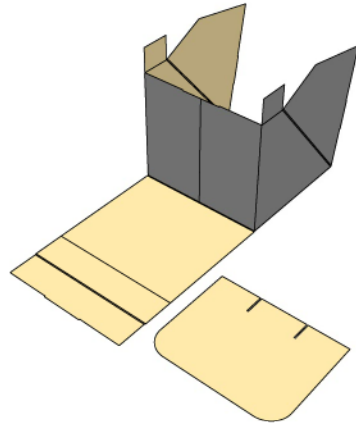
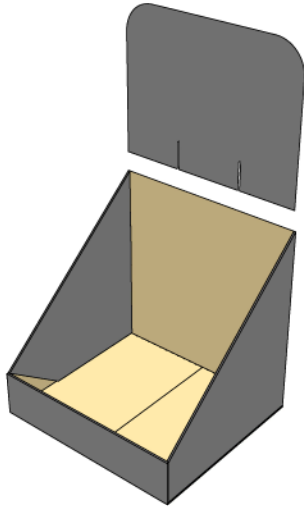


Presto POP Large Display Box

Display Setup

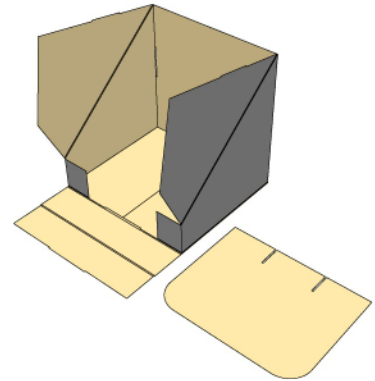
Step 1

Lay on flat surface and lift up side tabs. Fold both rectangle panels in to form half a box.



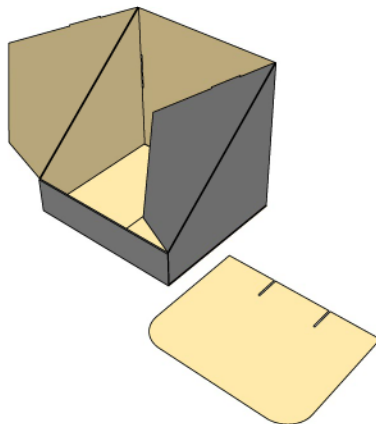
Step 2

Fold rectangle panels down onto long panel and fold in small square tabs.



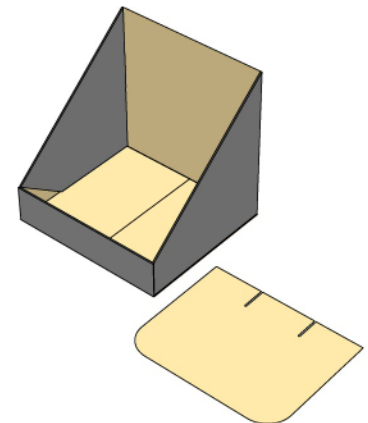
Step 3

Fold front panel over end tabs, and lock tab in slot.



Step 4

Fold wings into box and lock tabs into slots. Attach header in slot at top of display.



Storage

Reverse steps and store in a cool dry location.