

# Lumos Retractor

## Product Parts

- 1 - Base
- 2 - Graphic Cartridge
- 3 - Tension Roller
- 4 - Snap Rail
- 5 - Telescoping Pole
- 6 - Top Light Rail
- 7 - Power Cords



## Display Set-Up

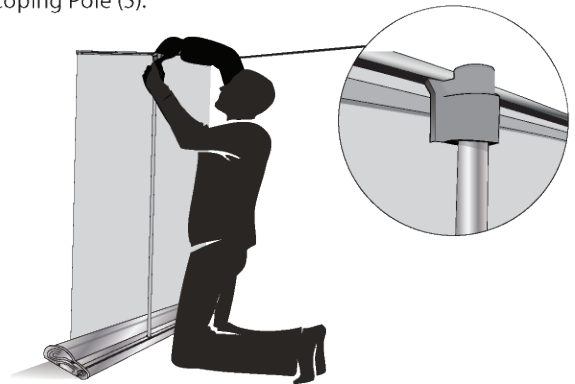
### Step 1

With Base Unit (1) placed at your desired location, insert Telescoping Pole (5) into hole slot on the back of the base. Once Pole is inserted, give it a quarter turn to lock it into place.



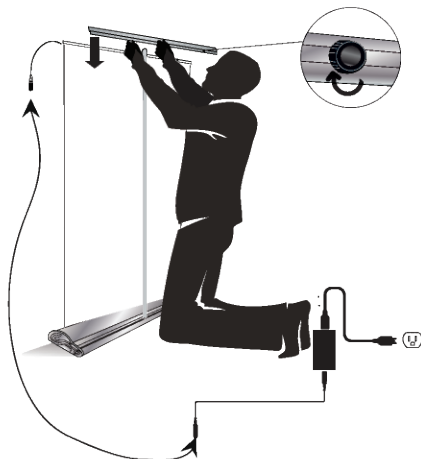
### Step 2

Lift the Banner Snap Rail (4) up by grabbing each side of the rail with both hands. Raise graphic halfway and attach the Banner Snap Rail (4) to the top of the Telescoping Pole (5).



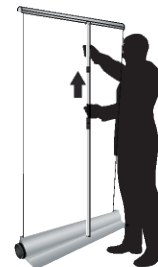
### Step 3

Put Light Rail (6) over the top of the Banner Snap Rail (4) and tighten thumb screws on the back. Connect Power Cords (7) together as seen in below diagram.



### Step 4

To raise graphic, unlock top lever on Telescoping Pole (5), raise pole, and relock lever. Repeat this step with additional levers until you reach your desired height.



**\*CAUTION\*** Lower bottom section of pole first to remove light bar. Once light bar is removed continue to disassemble.

## Storage and Care

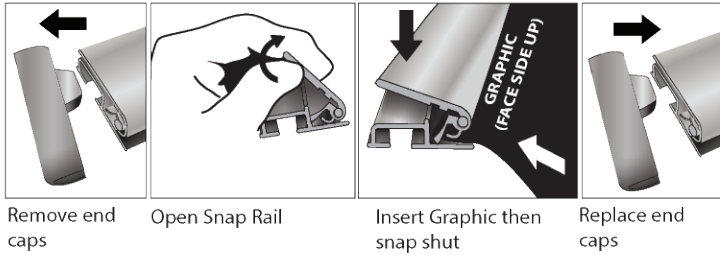
Place all product parts into Soft Carry Case and store in a cool, dry location. To clean non-graphic hardware, wipe with a damp cloth.

# Lumos Retractor

## Banner Install/Replacement ONLY

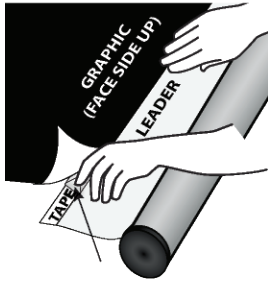
### Step 1

Remove both End Caps from the Snap Rail (4) and snap the clamp open. Fully insert the top edge of the banner into the groove of the Snap Banner Rail and snap it closed.



### Step 3

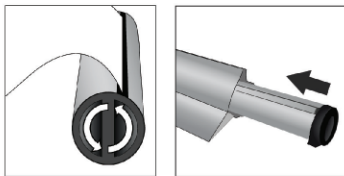
Align the Graphic Banner (printed side up) to the top of the tape leader from the Graphic Cartridge (2). Remove the strip of protective paper to expose the adhesive. Firmly and evenly press the Graphic Banner onto the adhesive moving up the edge as you pull away the strip of protective paper.



protective paper

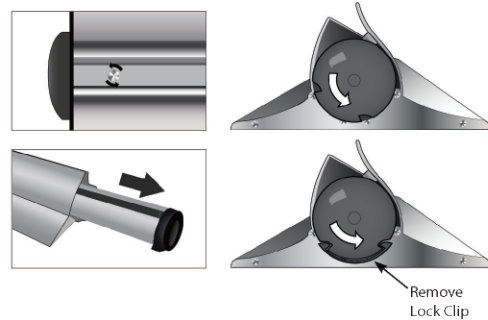
### Step 4

Retract the graphic into the cartridge by turning Tension Roller (3) counter clockwise. You should hear a click after each slight turn. The graphic will slowly retract into the base after a couple rotations of the roller. Reverse Step 2 by gliding cartridge back into Base (1) and replacing bottom set screws.



### Step 2

To insert graphic into Graphic Cartridge (2) you must remove it from the Base (1). Make sure bottom set screws have been removed. Turn end cap counter-clockwise to unlock cartridge and remove lock clip. This will allow you to glide the cartridge out of the base.



### Banner Install Tip

There is a magnet strip located at the bottom of your graphic leader as well as on the inside of the Graphic Cartridge (2). To remove your graphic from the cartridge, gently pull to release the magnet strip. To re-install, lower your graphic into the cartridge until the two magnet strips attract.

