

Show 'N' Write™ Display & Graphic Header

Congratulations on the purchase of your Show 'N' Write™.

Owner's Manual

Includes:

Parts List

Assembly Instructions

Disassembly Instructions

Storage Instructions

Care Instructions

Warranty Information

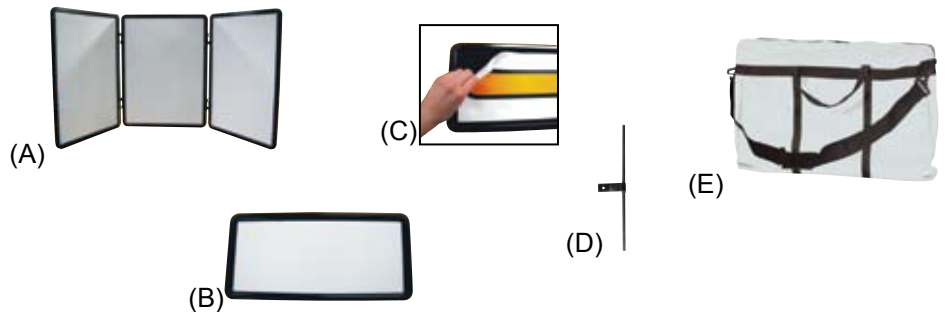
Please read all of the information carefully and contact your distributor or supplier with any issues.



Parts List

Important: Before you begin please count and inspect all pieces.

- 1 - Panel Display (A)
- 1 - Header Display (B)
- 1 - Header Graphic (C)
- 2 - Header Connector (D)
- 1 - Soft Carry Case (E)



Assembly Instructions



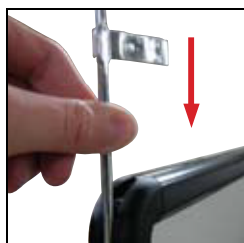
Step 1

Lay header (B) flat on table. Place header graphic (C) hook side down, on header's loop surface.



Step 2

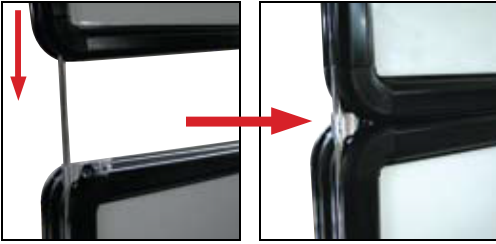
Unfold side panels to approximately 30° angles and set on tabletop.



Step 3

Line up the connector (D) with the groove on the edge of the center panel (A). Push down until the connector is sitting on top of the panel (A). Repeat on the other side of the center panel.

Assembly Instructions (cont.)



Step 4

Line up the groove on the edge of the header (B) with both connectors (D). Slide header (B) down until it rests on top of the center panel (A).

Disassembly Instructions



Step 1

Remove header (B) and connectors (D) from display (A). Fold display (A) together in Z-shaped pattern, and lay it flat.

Storage Instructions



Place and store all components in soft carry case (E) and store in a cool dry place.

Care Instructions

Spot clean with damp cloth.