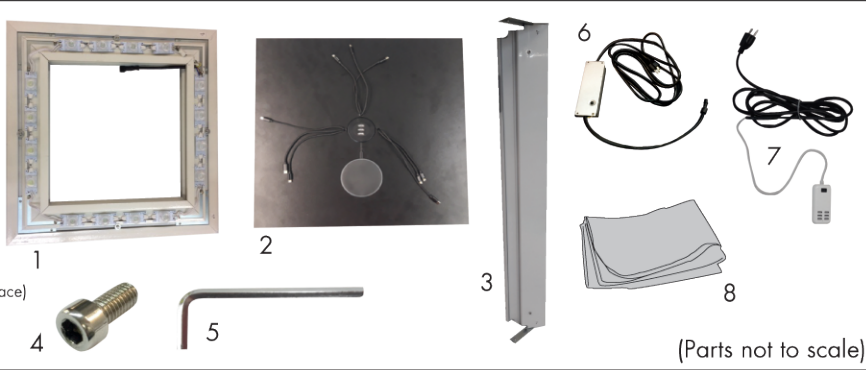


ShowGlower Power Station

Product Parts

- 1 - Bottom Base*
- 2 - Top Surface*
- 3 - Corner Pieces (x4)*
- 4 - Bolts (x16)
- 5 - 4mm Hex Wrench
- 6 - Power Cord
- 7 - USB hub and cord
- 8 - Graphic w/gasket edge
(adhered to underside of Top Surface)



(Parts not to scale)

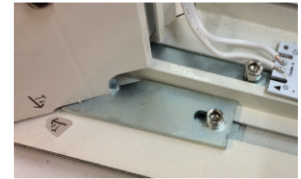
*Parts have matching numbers to indicate where they fit together.
Be mindful of sharp edges during assembly, as they can sever cords.



Display Set-Up

Step 1

For each of the Corner Pieces (3), find a matching number on the Bottom Base (1). One at a time, line a piece up on the correct corner and secure Bolts (4) through the piece's attached bracket and into the holes on the base.



Finger-tighten the bolts, until all four corner pieces are attached to both the Bottom Base(1) and Top Surface (2) at the end of Step 2.

Step 2

Carefully lower the Top Surface (2) onto the four corner pieces (3) and insert the bolts (4) in the same way from Step 1. Once all bolts (4) are inserted and finger-tight, finish tightening all of them with the 4mm Hex Wrench (5).

Step 3

Join the power connector on the base with the connector on the one Corner Piece (3).



Power Connector, only on one of the Corner Pieces.

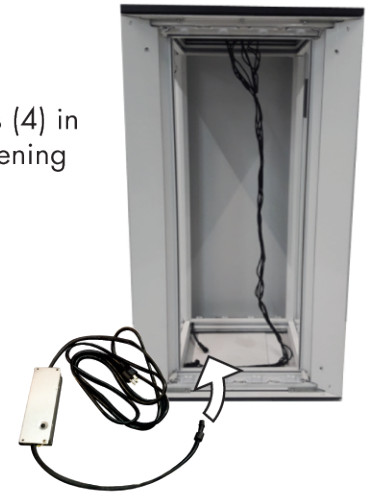
Step 4

On the bottom-side of the Top Surface (2), insert the cords into the white USB Hub (7) and make sure it is switched 'on' before applying the graphics. Feed the USB Hub's power cord under the frame and plug it in.



From underneath the base, attach the Power Cord (6) to the short cord on the bottom of the display and plug it in.

A power strip or surge protector is recommended but not included.



Step 5

Insert the Graphic's gasket (8) on one corner of the display and wrap it all the way around. Insert the remaining gasket into the same corner you started on to secure the graphic.

To remove the graphics, pull the loop found on the corner.



Storage

Store in a cool, dry place.

Care

To clean the frame, wipe with a damp cloth.

Do not wash or dry-clean the graphic.