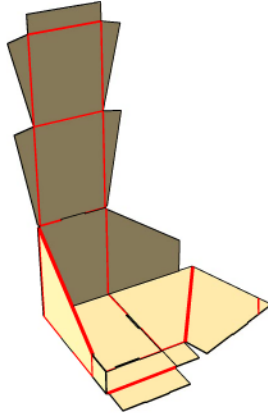
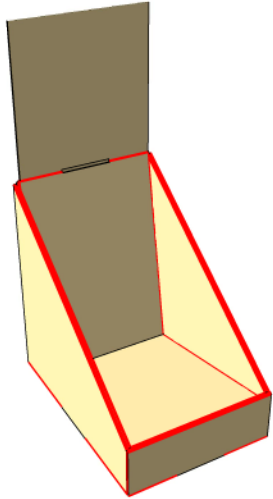


Presto POP Small Display Box

Display Setup

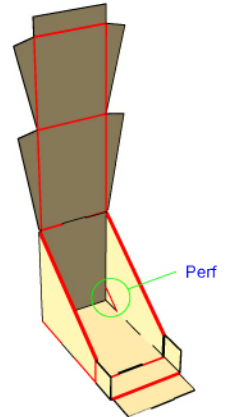
Step 1

Lay on flat surface and fold back and one wing. Bring end panel over wing and lock tab in slot.



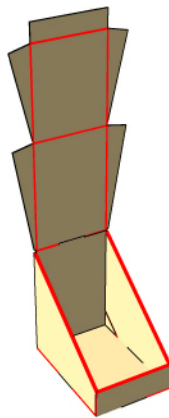
Step 2

Repeat with other end. Fold corner of end panel at perf.



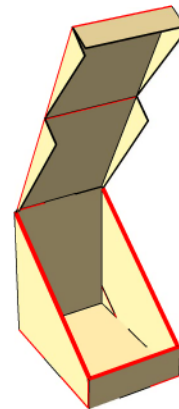
Step 3

Fold front panel over end tabs, and lock tab in slot.



Step 4

Fold ends of insert so it will fit in display. Attach header in slot at top of display.



Storage

Reverse steps and store in a cool dry location.