

WHEN CHOOSING A TENT HAVE YOU CONSIDERED...

- **LOCATION** - Where will this tent be used?
- **LONGEVITY** - Is this a long-term or short-term application?
- **MESSAGE** - What is the desired impact of your promotional message?
- **WEATHER** - Do you need ballasts or stakes?



★ = Best Sellers		PG	FRAME/CANOPY WARRANTY	CONSTRUCTION		FRAME WEIGHT (LBS.)	TOTAL SIZE	STOCK CANOPY COLORS
10' TENTS - MOST POPULAR SIZE	10' Standard ★	96	1 Year / 1 Year	Steel 1.125" Legs	1 mm Powder-Coated Steel Plastic Push Button for Height Adjustments ABS Nylon Joints	36	118.5"W x 127.5"-140"H x 118.5"D	
	10' Deluxe	97	2 Years / 1 Year	Steel 1.25" Legs	1 mm Powder-Coated Steel Lever for Height Adjustments ABS Glass-Filled Nylon Joints	48	118.5"W x 127"-139.5"H x 118.5"D	
	10' Premium ★	98	5 Years / 1 Year	Aluminum 1.75" Dia. Hexagon Legs	0.8 mm Anodized Aluminum Lever for Height Adjustments ABS Glass-Filled Nylon Joints	36.5	118"W x 126.75"-139.25"H x 118"D	
	10' Elite	99	Lifetime / 1 Year	Aluminum 2.125" Dia. Hexagon Legs	50 mm Anodized Aluminum Lever for Height Adjustments Machined Aluminum Joints	63	118"W x 116.75"-128.25"H x 118"D	
	10' Compact	100	1 Year / 1 Year	Aluminum 1.25" Legs	1 mm Anodized Aluminum Lever for Height Adjustments ABS Glass-Filled Nylon Joints	38.4	118.5"W x 121"-133.5"H x 118.5"D	
	10' Premium Gable	104	5 Years / 1 Year	Aluminum 1.75" Dia. Hexagon Legs	0.8 mm Anodized Aluminum Lever for Height Adjustments ABS Glass-Filled Nylon Joints	37.4	118"W x 119.25"-131.75"H x 118"D	
	6' Deluxe ★	102	2 Years / 1 Year	Steel 1.25" Legs	1 mm Powder-Coated Steel	38.5	72"W x 109"-121.5"H x 72"D	
	8' Deluxe				Lever for Height Adjustments ABS Glass-Filled Nylon Joints	44.5	96"W x 117.5"-130"H x 96"D	
	15' Premium	103	5 Years / 1 Year	Aluminum 1.75" Dia. Hexagon Legs	0.8 mm Anodized Aluminum	46	175.5"W x 126.75"-139.25"H x 118.25"D	
	20' Premium ★				Lever for Height Adjustments ABS Glass-Filled Nylon Joints	62.75	234.5"W x 126.75"-139.25"H x 118.25"D	
	15' Premium Gable	104	5 Years / 1 Year	Aluminum 1.75" Dia. Hexagon Legs	0.8 mm Anodized Aluminum	47.2	175.5"W x 119.25"-131.75"H x 118.25"D	
	20' Premium Gable				Lever for Height Adjustments ABS Glass-Filled Nylon Joints	64	234.5"W x 119.25"-131.75"H x 118.25"D	

Wind Test Assessment - All of our tents are rated to withstand winds up to 25 mph. We recommend ground stakes with rope and two steel ballasts or one water weight per leg.

Disclaimer: Wind rating conducted in a controlled environment. Outdoor products should be taken down if bad weather is likely. Wind gusts and heavy rain could reduce the wind resistance of these products.

TENT CANOPY



Canopies covered by a 1-year warranty.



Constructed of durable 400 denier polyester.



50+ UV protection and weather-resistant.



Flame retardant treated (FR rated for exhibit halls).

10' Stock Canopy Colors



PMS colors are for reference only and may vary slightly from actual color.

Two Print Methods



Full-Color Imprint

Imprinted on peak and valance locations of your choice.
One imprint per location (peak or valance).
Only one setup fee per tent.

Dye Sublimation

Covers the entire canopy with vibrant, full-color artwork.*
One piece per side for a continuous image from peak to valance with no seams.

*Not available on vented canopies



Visit showdowndisplays.com for more information.

ASI: 87188 PPAI: 254687 SAGE: 67383 UPIC: SHOWDOWN

Showdown
DISPLAYS

WHEN CHOOSING A SAIL SIGN HAVE YOU CONSIDERED...

- **LOCATION** - Will you be using this product indoors or out?
- **LONGEVITY** - How long will your flag be displayed?
- **MESSAGE** - Do you need a single-sided or double-sided flag?
- **WEATHER** - Are there extreme weather conditions to consider?



GOOD

Value Sail Signs

- New double-layer reinforcement at the end of the pole pocket for additional strength
- Vibrant dye sublimation on super poly knit fabric
- Value hardware
- Value spike or Value cross base

BETTER





Streamline Sail Signs

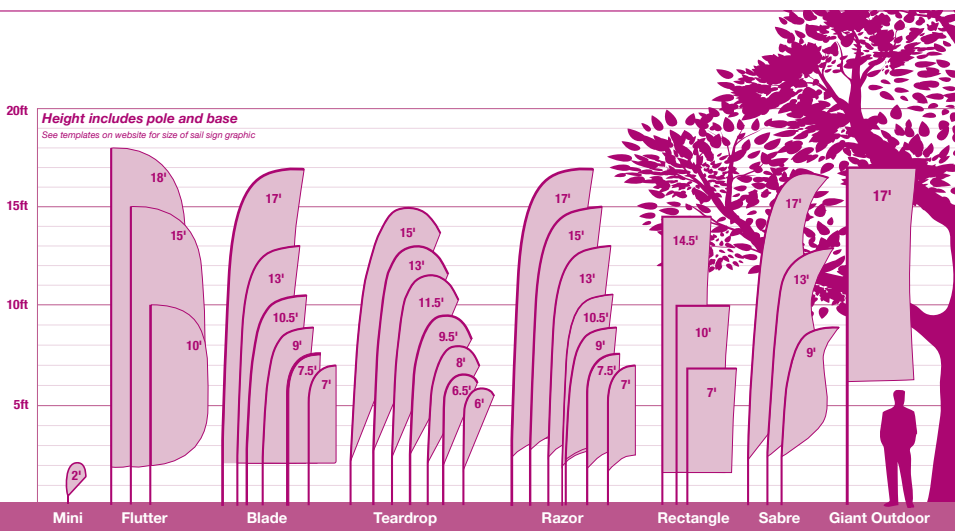
- New double-layer reinforcement at the end of the pole pocket for additional strength
- Vibrant dye sublimation on super poly knit fabric
- Value hardware
- Ground spike, scissor base or three-legged base

BEST

Premium Sail Signs

- New double-layer reinforcement at the end of the pole pocket for additional strength
- Vibrant dye sublimation on super poly knit fabric
- Premium hardware
- Ground spike, scissor base or three-legged base

	VALUE HARDWARE	PREMIUM HARDWARE
Pole Construction	 <p>Channelled carbon composite overlay construction with low-gloss black paint finish.</p> <p>Double-reinforced carbon fiber pole segment ends.</p>	 <p>Uniform carbon composite overlay construction with high-gloss black paint finish.</p> <p>Polished aluminum collar pole segment ends and ergonomic, rubber-reinforced base grip.</p>
Flag Attachment	 <p>A loop on the flag attaches to an adjustable hook on the pole.</p>	 <p>Flag attaches to a fixed hook using a bungee cord.</p>
Carry Case	Sold separately	✓
Hardware Warranty	90 Days	Lifetime



Wind Test Assessment:

6'-11.5' to withstand winds up to 30 mph with use of water ballast or a ground spike in firm ground.
13'-18' to withstand winds up to 20 mph with use of water ballast or a ground spike in firm ground.

Flag Warranty: Flags used outdoors have a 90-day warranty. Flags used indoors have a 1-year warranty.

Disclaimer:

Wind rating conducted in a controlled environment. Outdoor products should be taken down if bad weather is likely. Wind gusts and heavy rain could reduce the wind resistance of these products. Flutter flags have not been rated for wind conditions.



Visit showdowndisplays.com for more information.

ASI: 87188 PPAI: 254687 SAGE: 67383 UPIC: SHOWDOWN

Showdown
DISPLAYS

WHEN CHOOSING A BANNER HAVE YOU CONSIDERED...

- **LOCATION** - Will you be using this banner indoors or out?
- **USE** - Will you be hanging it on a wall? How about mounting it on a pole?
- **LONGEVITY** - How long will your banner be displayed?
- **WEATHER** - Are there extreme weather conditions to consider?
- **MESSAGE** - Do you need a single-sided or double-sided banner?



★ = Best Sellers	TITAN™ SCRIM VINYL					FABRIC			
	10 oz.	13 oz. ★	13 oz. Smooth	18 oz. Opaque	9 oz. Mesh	Nylon	Polyester Poplin	Super Poly Knit	Satin
DURABILITY	Light Duty	Average Duty	Average Duty	Heavy Duty	Heavy Duty	Average Duty	Light Duty	Average Duty	Light Duty
WIND CONDITIONS			Not for Outdoor Use				Not for Outdoor Use		Not for Outdoor Use
INDOOR USE	Good	Better		Better	Better	Better		Better	Better
OUTDOOR USE	Good	Better	Not for Outdoor Use				Not for Outdoor Use	Better	Not for Outdoor Use

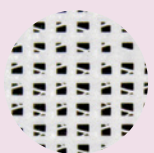
BANNER MATERIAL



SCRIM
Woven threads that provide added strength for a stronger vinyl banner.



SMOOTH
Vinyl without visible scrim texture for higher-quality images.



MESH
A woven vinyl pattern that features small holes so wind can pass through.



FABRIC
Breathable, lightweight cloth.

POPULAR FINISHING STYLES

Additional finishing styles available online.

Heat Weld

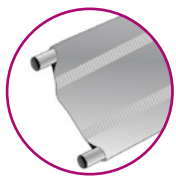
Single-sided vinyl banners only



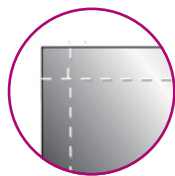
HEM & GROMMETS



HEM, ROPE & GROMMETS



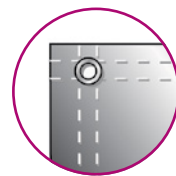
3" POLE POCKETS



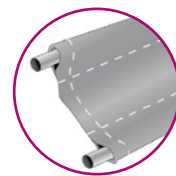
HEM ONLY

Sewn

Fabric and double-sided vinyl banners



HEM & GROMMETS



3" POLE POCKETS



Visit showdowndisplays.com for more information.

ASI: 87188 PPAI: 254687 SAGE: 67383 UPIC: SHOWDOWN

Showdown
DISPLAYS

WHEN CHOOSING A RETRACTOR HAVE YOU CONSIDERED...

- **USE** - Will this product be used on a floor or on a tabletop?
- **FLEXIBILITY** - Will your graphic be permanent, or will you be swapping it out frequently?



★ = Best Sellers		PG	VIEWABLE GRAPHIC	COST	TELESCOPING POLE	CHANGEABLE BANNER	ADJUSTABLE TENSION	2-SIDED OPTION	BANNER MEDIA (See Definitions Below)	RCAT RATING Minimum Retractions	HARDWARE WARRANTY
GOOD	Small Mini Promo	41	8.25"W x 12"H	\$					Polypropylene Media	NA	6 Months
	Large Mini Promo	41	11.75"W x 16.5"H	\$					Polypropylene Media	NA	6 Months
	Deluxe Mini	41	8.25"W x 16.25"H	\$					Polypropylene Media	NA	6 Months
	31.5" Ideal ★	26	31.25"W x 79.5"H	\$				✓	Polypropylene Media	25	2 Months
	33.5" Ideal ★	26	33.25"W x 79.5"H	\$				✓	Polypropylene Media	25	2 Months
	31.5" Value ★	27	31.5"W x 79.5"H	\$					Polypropylene Media	50	6 Months
	33.5" Value ★	27	33.5"W x 79.5"H	\$					Polypropylene Media	50	6 Months
	36" Value ★	27	36"W x 79.5"H	\$					No-Curl Hybrid Media	50	6 Months
	Tabletop Economy ★	28	24"W x 35.5"H	\$					No-Curl Hybrid Media	100	1 Year
	24" Economy ★	28	24"W x 78.5"H	\$					No-Curl Hybrid Media	100	1 Year
	31.5" Economy ★	28	31.5"W x 78.5"H	\$					No-Curl Hybrid Media	100	1 Year
	33.5" Economy ★	28	33.5"W x 78.5"H	\$					No-Curl Hybrid Media	100	1 Year
	36" Economy ★	28	36"W x 78.5"H	\$					No-Curl Hybrid Media	100	1 Year
	48" Economy ★	28	47.25"W x 78.5"H	\$					No-Curl Hybrid Media	100	1 Year
BETTER	31.5" Economy Plus ★	30	31.5"W x 58"-78.5"H	\$\$	✓	✓			No-Curl Hybrid Media	150	2 Years
	33.5" Economy Plus ★	30	33.5"W x 58"-78.5"H	\$\$	✓	✓			No-Curl Hybrid Media	150	2 Years
	24" Stratus ★	31	24"W x 64.375"-78.5"H	\$\$	✓	✓			No-Curl Hybrid Media	200	2 Years
	31.5" Stratus ★	31	31.5"W x 64.375"-78.5"H	\$\$	✓	✓			No-Curl Hybrid Media	200	2 Years
	33.5" Stratus ★	31	33.5"W x 64.375"-78.5"H	\$\$	✓	✓			No-Curl Hybrid Media	200	2 Years
	36" Stratus ★	31	36"W x 64.375"-78.5"H	\$\$	✓	✓			No-Curl Hybrid Media	200	2 Years
	48" Stratus ★	31	47.75"W x 64.375"-78.5"H	\$\$	✓	✓			No-Curl Hybrid Media	200	2 Years
	33.5" Deluxe Pro ★	32	33.5"W x 61.5"-79.5"H	\$\$	✓	✓		✓	No-Curl Hybrid Media	200	2 Years
	46.5" Deluxe Pro ★	32	46.5"W x 61.5"-79.5"H	\$\$	✓	✓		✓	No-Curl Hybrid Media	200	2 Years
	31" Change Agent	33	31"W x 69"-80"H	\$\$	✓	✓			No-Curl Hybrid Media	300	2 Years
	33" Change Agent	33	33"W x 69"-80"H	\$\$	✓	✓			No-Curl Hybrid Media	300	2 Years
	36" Change Agent	33	36"W x 69"-80"H	\$\$	✓	✓			No-Curl Hybrid Media	300	2 Years
	24" Optimum	33	23.75"W x 56.75"-78.75"H	\$\$\$	✓	✓		✓	No-Curl Hybrid Media	800	3 Years
	31.5" Optimum	33	31.5"W x 56.75"-78.75"H	\$\$\$	✓	✓		✓	No-Curl Hybrid Media	800	3 Years
	40" Optimum	33	40"W x 56.75"-78.75"H	\$\$\$	✓	✓		✓	No-Curl Hybrid Media	800	3 Years
BEST	Superb	34	33.5"W x 31.5"-78"H	\$\$\$	✓	✓	✓		No-Curl Hybrid Media	800	Lifetime
	XChange	34	33"W x 62.625"-79"H	\$\$\$	✓	✓	✓		No-Curl Hybrid Media	800	3 Years
	MagnaChange	35	33.5"W x 26"-90"H	\$\$\$	✓	✓	✓		No-Curl Hybrid Media	800	3 Years
	Tabletop MagnaLink	41	15.75"W x 42.25"-50"H	\$\$\$	✓	✓	✓		No-Curl Hybrid Media	800	3 Years
	16" MagnaLink	35	15.75"W x 82.25"-90"H	\$\$\$	✓	✓	✓		No-Curl Hybrid Media	800	3 Years
	33.5" MagnaLink	35	33.375"W x 29.875"-90"H	\$\$\$	✓	✓	✓		No-Curl Hybrid Media	800	3 Years
	60" MagnaLink	35	59"W x 29.875"-90"H	\$\$\$	✓	✓	✓		No-Curl Hybrid Media	800	3 Years
	NEW! 33.5" InstaChange	36	33.5"W x 59.625"-84"H	\$\$\$	✓	✓			No-Curl Hybrid Media	600	2 Years
	NEW! 40" InstaChange	36	39.25"W x 59.625"-84"H	\$\$\$	✓	✓			No-Curl Hybrid Media	600	2 Years
	NEW! 48" InstaChange	36	47.25"W x 59.625"-84"H	\$\$\$	✓	✓			No-Curl Hybrid Media	600	2 Years
SPECIALTY	NEW! Spotlight ★	37	31.25"W x 78.5"H	\$\$\$				✓	Flexible Backlit Film	800	3 Years
	Outdoor	38	31.5"W x 53.75"-79.5"H	\$\$	✓				13 oz. Scrim Vinyl	150	1 Year
	Outdoor Trek Lite	38	33.25"W x 77.25"H	\$\$\$				✓	13 oz. Scrim Vinyl	250	1 Year
	Element	39	33.25"W x 37"-80.25"H	\$\$\$	✓			✓	13 oz. Scrim Vinyl	150	1 Year
	4' A-Frame	39	47.5"W x 40"H	\$\$\$				✓	13 oz. Scrim Vinyl	100	1 Year
	5' A-Frame	39	59.25"W x 40"H	\$\$\$				✓	No-Curl Opaque Fabric	100	1 Year
	5' Jumbo Wide ★	40	59.75"W x 78.75"H	\$\$\$					No-Curl Fabric	100	1 Year
	6' Jumbo Wide ★	40	71.75"W x 78.75"H	\$\$\$					13 oz. Smooth Scrim Vinyl	100	1 Year
	8' Jumbo Wide ★	40	94.75"W x 78.75"H	\$\$\$						100	1 Year

BANNER MEDIA

TITAN™ NO-CURL HYBRID MEDIA



Anti-curl properties for a taut banner.

TITAN™ NO-CURL OPAQUE FABRIC



High-quality fabric that prevents curling. Silver backing makes it opaque.

TITAN™ NO-CURL FABRIC



Lightweight, no-glare fabric prevents curling.

DRY-ERASE MEDIA



Smooth, glossy surface that can be written or drawn on with a dry-erase marker.

TITAN™ 13 OZ. SMOOTH SCRIM VINYL



Smooth vinyl material, ideal for high-quality graphics.

TITAN™ 13 OZ. SCRIM VINYL



Durable vinyl repels water and cleans easily for extended outdoor use.

TITAN™ POLYPROPYLENE MEDIA



Tear-resistant matte media for temporary use.

BACKLIT FILM



Backlit film allows for light to shine through your artwork.

CLEAR VINYL



Clear vinyl allows for easy maintenance for health and safety practices.



Visit showdowndisplays.com for more information.

ASI: 87188 PPAL: 254687 SAGE: 67383 UPIC: SHOWDOWN

Showdown
DISPLAYS

WHEN CHOOSING A TABLE COVER HAVE YOU CONSIDERED...

- **SIZE** - What size is your table?
- **FABRIC/MEDIA** - What type of material are you looking for?
- **FREQUENCY** - How often will you be using your table throw?
- **USE** - Will people be sitting at the table, or will it be used to showcase merchandise or promotional materials?
- **MESSAGE** - Do you want a logo printed on the front, or would you like a full-color design that covers the full throw?

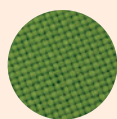


★ = Best Sellers		PG	SIZES	FIT	TABLE COVERAGE	TABLE COVER MATERIAL	EDGE FINISHING	FLAME RETARDANT	WASHABLE	PRINT OPTIONS
RECTANGULAR	Value Lite	21	6' & 8'	Drape	4-Sided	Polyester Pongee	Serged		Disposable	1-Color White Imprint Only
	NEW! LazerLine ★	13	4', 6' & 8'	Drape	3-Sided & 4-Sided	Polyester Poplin	Laser Cut	✓	Machine	Full-Color Front Only Full-Color Full-Bleed
	Economy ★	8	4', 6' & 8'	Drape	3-Sided	Polyester Poplin	Serged	✓	Machine	Full-Color Front Only Full-Color Full-Bleed
	Standard ★	10	4', 6' & 8'	Drape	4-Sided	Polyester Poplin	Serged	✓	Machine	Full-Color Front Only Full-Color Full-Bleed
	Enviro	20	6' & 8'	Drape	3-Sided & 4-Sided	Polyester Poplin	Serged	✓	Machine	Full-Color Imprint
	Stain-Resistant	20	6' & 8'	Drape	3-Sided & 4-Sided	Polyester Poplin	Serged	✓	Machine	Full-Color Imprint
	Fitted	19	4', 6' & 8'	Fitted	4-Sided	Polyester Poplin	Serged	✓	Machine	Full-Color Front Only Full-Color Full-Bleed
	Convertible ★	12	8' Converts to 6'	Drape Converts to Fitted	4-Sided	Polyester Poplin	Serged	✓	Machine	Full-Color Front Only Full-Color Full-Bleed
	NEW! Throw Glo	15	6' & 8'	Fitted	3-Sided & 4-Sided	Premium Woven Polyester	Serged	✓	Spot Clean	Full-Color Full-Bleed
	UltraFit Demo	17	4'	Snug Fitted	4-Sided	Two-Way Stretch Fabric	Hemmed	✓	Machine	Full-Color Full-Bleed
	Outdoor Fitted	19	6' & 8'	Fitted	4-Sided	400 Denier Polyester	Serged	✓	Machine	Full-Color Full-Bleed
	Premium ★	14	6' & 8'	Drape	4-Sided	Two-Way Stretch Fabric	Hemmed	✓	Machine	Full-Color Full-Bleed
	UltraFit Curve	16	4', 6' & 8'	Snug Fitted	3-Sided	Two-Way Stretch Fabric	Hemmed	✓	Machine	Full-Color Full-Bleed
	UltraFit Classic ★	16	4', 6' & 8'	Snug Fitted	4-Sided	Two-Way Stretch Fabric	Hemmed	✓	Machine	Full-Color Full-Bleed
ROUND	Fitted Round	18	31.5" Bar-Height	Fitted	4-Sided	Polyester Poplin	Serged	✓	Machine	Full-Color Front Only Full-Color Full-Bleed
	Round	18	31.5" Café-Height, 31.5" Bar-Height, 3', 4' & 5'	Drape	4-Sided	Polyester Poplin	Serged	✓	Machine	Full-Color Full-Bleed
	UltraFit Round	17	31.5" Bar-Height	Snug Fitted	4-Sided	Two-Way Stretch Fabric	Hemmed	✓	Machine	Full-Color Full-Bleed
PARTIAL COVERAGE	Lateral Runner	23	125" & 149"	Drape	Top & Partial Sides	Polyester Poplin	Serged	✓	Machine	Full-Color Top Only Full-Color Full-Bleed
	NEW! LazerLine Runner	13	28" & 57"	Drape	Partial Front, Top & Back	Polyester Poplin	Laser Cut	✓	Machine	Full-Color Front Only Full-Color Full-Bleed
	Standard Runner ★	22	28" & 57"	Drape	Partial Front, Top & Back	Polyester Poplin	Serged	✓	Machine	Full-Color Front Only Full-Color Full-Bleed
	Accent Runner	23	28" & 57"	Drape	Partial Front, Top & Back	Polyester Satin	Satin Trim	✓	Machine	Full-Color Imprint Full-Color Full-Bleed
	UltraFit Crossover	17	6'	Snug Fitted	Partial 4-Sided	Two-Way Stretch Fabric	Hemmed	✓	Machine	Full-Color Full-Bleed

NOTE: Flame-retardant table covers are FR Rated (flame retardant treated) in compliance with the National Fire Protection Association Standard No. 701.

MATERIAL OPTIONS

POLYESTER POPLIN



Wrinkle-resistant, durable fabric.

TWO-WAY STRETCH FABRIC



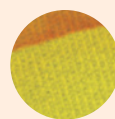
Nearly opaque and virtually wrinkle-free.

PREMIUM WOVEN POLYESTER



The backlit material allows for a glow effect when used with lights.

400 DENIER POLYESTER



The same durable, weather-resistant material we use for our tent canopies.

POLYESTER PONGEE



Lightweight and designed for limited use.

PRINT OPTIONS



Underside of material is stock fabric color.

Full-Color Imprint

- Graphics can range in complexity from a simple one-color design to a detailed full-color design (see product pages for details)
- Vector art required
- Available in limited stock fabric colors only
- Artwork is imprinted on front only
- Minimum and maximum artwork size requirements apply
- Always roll your table throw for storage; do not fold
- Available on select throws only



Underside of material is blank.

Full-Color Front Only

- Graphic can range in complexity from a simple one-color design to a detailed full-color design
- Vector art preferred
- Available in stock fabric colors only
- Artwork is printed on front only
- Maximum artwork size requirements apply
- Offers a large maximum imprint area for more graphic coverage
- Fold and store in included poly bag



Underside of material is blank.

Full-Color Full-Bleed

- Ideal for complex designs, photographic images, or art with gradients
- Vector and raster art accepted
- Art is dye sublimated on white fabric only
- Full-color artwork can be printed across the entire throw
- No artwork size restrictions
- Fold and store in included poly bag



Visit showdowndisplays.com for more information.

ASI: 87188 PPAL: 254687 SAGE: 67383 UPIC: SHOWDOWN

Showdown
DISPLAYS

WHEN CHOOSING SIGNAGE HAVE YOU CONSIDERED...

- **LOCATION** - Will your sign be used indoors or out?
- **LONGEVITY** - How long will your sign be displayed?
- **FLEXIBILITY** - Will your message be permanent, or will it change frequently?
- **TRANSPORT** - Will your sign be stationary, or will you be transporting it from place to place?



★ = Best Sellers		PG	EASY TO CHANGE SIGN	TWO-SIDED	SUBSTRATE	OUTDOOR USE	WEIGHT
OUTDOOR	Parking Pal	134	✓	✓	Reflective Media	✓	13 lbs.
	NEW! Arch A-Frame	133	✓	✓	Polyester Knit	✓	3.6 lbs.
	NEW! Snap A-Frame	131	✓	✓	Titan™ Polypropylene Media	✓	17.2 lbs.
	Simpo Sign II A-Frame ★	128	✓	✓	4 mm Corrugated Plastic	✓	10.5 lbs.
	Signicade Deluxe Chalkboard A-Frame ★	128	✓	✓	Chalkboard	✓	25 lbs.
	Signicade Deluxe A-Frame ★	128	✓	✓	4 mm Corrugated Plastic	✓	21 lbs.
	Signicade A-Frame	128	✓	✓	4 mm Corrugated Plastic	✓	20 lbs.
	Deluxe Wood A-Frame	129	✓	✓	Chalkboard with Surface Grip Decal	Short-Term	18-29.8 lbs.
	Economy Wood A-Frame	129	✓	✓	Chalkboard with Surface Grip Decal	Short-Term	8.5 lbs.
	Horizontal A-Frame	132	✓	✓	Titan™ 13 oz. Scrim Vinyl	✓	11-18 lbs.
	Superstrong Angle Iron A-Frame	132	✓	✓	4 mm Corrugated Plastic	✓	6.5-13.5 lbs.
	Twist-Up Oval A-Frame	133		✓	Polyester Knit	✓	8.25 lbs.
	Sunrise Lawn Sign	134	✓	✓	Super Poly Knit Fabric	✓	2.3 lbs.
	Outdoor Flex Sign	135	✓	✓	Titan™ 10 oz. Scrim Vinyl	✓	27 lbs.
	Outdoor Flex Sign with Ballast Base	135	✓	✓	Titan™ 10 oz. Scrim Vinyl	✓	26 lbs.
	NEW! Opaque Window Cling	141			Window Film	✓	0.02-0.45 lb.
	NEW! Magnet Promo Sign	145	✓		Magnet Media	✓	0.4-1.6 lbs.
	Corrugated Plastic Sign	135		✓	4 mm Corrugated Plastic	✓	0.5-1 lb.
	Barricade Cover	138		✓	Two-Way Stretch Fabric Titan™ 18 oz. Opaque Scrim Vinyl	✓	1.8-5.4 lbs.
	FrameWorx Flex	136	✓	✓	Mesh Fabric	✓	27.5 lbs.
	NEW! EuroFit Swivel Sign	137	✓	✓	Polyester Knit	✓	15-17.6 lbs.
	Door Wrap	149		✓	Two-Way Stretch Fabric	Short-Term	1.25-1.5 lbs.
	NEW! Outdoor Surface Tac	140			Adhesive Aluminum Foil-Based Media	✓	0.4-3.8 lbs.
	NEW! TrashWorks Wrap	149		✓	Two-Way Stretch Fabric	Short-Term	0.4-0.8 lb.
	Storm Mat	146			Polyester Carpeting with Rubber Backing	✓	4-10 lbs.
INDOOR	Uptown A-Frame	130	✓	✓	Rigid PVC Board		15.5-24.25 lbs.
	Uptown Accent A-Frame	130	✓	✓	Rigid PVC Board		30.5 lbs.
	Base-X Sign	138	✓	✓	Foamcore		7.25-8.25 lbs.
	Flat Base Sign Display	139	✓	✓	4 mm Corrugated Plastic		13.5 lbs.
	NEW! Impress A-Frame	131	✓	✓	Polyester Knit		9.4-10.8 lbs.
	Impress Sign	139	✓	✓	Polyester Knit		14.25 lbs.
	NEW! Wall Decal	142			Adhesive Backed PVC Film		0.16-0.62 lb.
	Crystal Edge Display	148	✓	✓	Backlit Media		5-13.7 lbs.
	LED Light Box	148	✓		Backlit Media		8.5-14 lbs.
	NEW! Gallery Signboard ★	143			Canvas Fabric		1-6.2 lbs.
	NEW! Glossy Aluminum Signboard ★	144			Aluminum		0.2-4 lbs.
	Countertop Mat	145			PVC Foam w/PVC Coated Polyester Woven Fabric		1.3-1.8 lbs. (set of 6)
	NEW! Indoor Surface Grip	140			Adhesive Matte Vinyl with Fabric Backing		0.05-2.4 lbs.
	Floor Hugger Mat ★	146			Nylon Yarn with Rubber Backing		8-16 lbs.
	Marketing Mat	147			40 mil Vinyl		0.15-0.6 lb.
	NEW! LiteWriter	148	✓		Backlit Film		6.2 lbs.
	Floor Decor	147			PVC Foam w/PVC Coated Polyester Woven Fabric		1.6-22 lbs.

SUBSTRATES

RIGID



- 4 mm Corrugated Plastic
- Foamcore
- Rigid PVC Board
- Chalkboard
- Aluminum

BANNER



- Titan™ Polypropylene Media
- Titan™ 10 oz. Scrim Vinyl
- Titan™ 13 oz. Scrim Vinyl
- Titan™ 18 oz. Opaque Scrim Vinyl
- Backlit Media

FABRIC



- Two-Way Stretch Fabric
- Super Poly Knit Fabric
- Polyester Knit
- Mesh Fabric
- Canvas Fabric

MAT



- PVC Foam w/PVC Coated Polyester Woven Fabric
- Nylon Yarn with Rubber Backing
- Polyester Carpeting with Rubber Backing
- 40 mil Vinyl

DECAL



- Adhesive Matte Vinyl with Fabric Backing
- Adhesive Aluminum Foil-Based Media
- Adhesive Backed PVC Film
- Window Cling
- Magnet Media
- Reflective Media



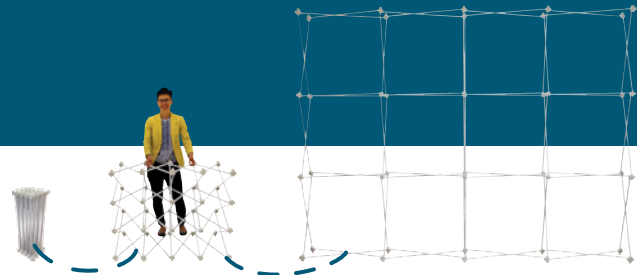
Visit showdowndisplays.com for more information.

ASI: 87188 PPAI: 254687 SAGE: 67383 UPCI: SHOWDOWN

Showdown
DISPLAYS

WHEN CHOOSING A POP-UP HAVE YOU CONSIDERED...

- **SIZE** - What is the size of your space?
- **TRANSPORT** - How will this display be transported?
- **FREQUENCY** - How often will you be setting up and taking down your display?
- **FLEXIBILITY** - Will you be changing out your look and message frequently?
- **ACCESSORIES** - Do you need lights for your display, and will power be available?



		PG	EASE OF SETUP	FRAME WARRANTY	FRAME DURABILITY	PANEL INSTALLATION	PANEL MATERIAL	ADD-ONS
FABRIC	Splash	184	★★★★	2 Years	High-grade 0.03" aluminum frame with scissor construction and bayonet locking system. Medium-weight nylon connecting hubs.	Graphic panels install using hook-and-loop fasteners.	Polyester Knit Block-Out Fabric	Ultimate LED Light Kits sold separately (see page 217)
	Verge	186	★★★★	2 Years	High-grade 0.038" aluminum frame with scissor construction and bayonet locking system; gloss painted for maximum light reflection. Square extrusions provide an easy interface to install lights.	Pegs on the channel bars press into the frame's hubs to hold SEG panels in place.	Polyester Knit	Ultimate LED Light Kits sold separately (see page 217)
	Verge Glo	187	★★★★	2 Years	High-grade 0.038" aluminum frame with scissor construction and bayonet locking system; gloss painted for maximum light reflection. Square extrusions provide an easy interface to install lights.	Pegs on the channel bars press into the frame's hubs to hold SEG panels in place.	Premium Woven Polyester	Ultimate LED Light Kits sold separately (see page 217)
MULTI-PANEL	GeoMetrix	188	★★★★★	1 Year	Lightweight 0.03" aluminum spring-action pop-up frame.	Reinforced buttonholes on graphic panels attach to pegs on the frame's hubs.	Polyester Double Knit	Ultimate LED Light Kits sold separately (see page 217)
	Deluxe GeoMetrix	190	★★★★	2 Years	High-grade 0.03" aluminum frame with scissor construction and bayonet locking system. Medium-weight nylon connecting hubs. Rectangular extrusions provide stability and strength for shelves.	Reinforced buttonholes on graphic panels attach to pegs on the frame's hubs.	Polyester Double Knit	Ultimate LED Light Kits sold separately (see page 217) Internal Shelf (see page 190) Stabilizer Feet (see page 190) Connector Shelf (see page 193) End Panel Graphic Panels (see page 194)
	Deluxe GeoMetrix Connector	192	★★★	2 Years	High-grade 0.03" aluminum frame with scissor construction and bayonet locking system. Medium-weight nylon connecting hubs. Rectangular extrusions provide stability and strength for shelves.	Reinforced buttonholes on graphic panels attach to pegs on the frame's hubs.	Polyester Double Knit	Ultimate LED Light Kits sold separately (see page 217) Internal Shelf (see page 190) Stabilizer Feet (see page 190) Connector Shelf (see page 193) End Panel Graphic Panels (see page 194)
MURAL PANEL	Echo	195	★★★	1 Year	Lightweight 0.03" aluminum spring-action pop-up frame.	Individual locking channel bars for magnet-to-steel panel registration.	Fabric Panels Mural Panels	Case-to-Counter Conversion Kit included Ultimate LED Light Kits included with select kits
	Show 'N Rise	196	★★★★	2 Years	High-grade 0.03" aluminum frame with scissor construction and bayonet locking system. Medium-weight nylon connecting hubs. Rectangular extrusions provide stability and strength for shelves.	Shock cord magnet rails for magnet-to-magnet panel registration.	Fabric Panels Mural Panels	Case-to-Counter Conversion Kit included Ultimate LED Light Kits included Internal Shelf sold separately (see page 196)
	ARISE	197	★★★★★	Lifetime	High-grade 0.04" extruded aluminum frame with self-locking scissor construction. Medium-weight nylon connecting hubs.	Magnets connect bars to the frame for magnet-to-magnet panel registration.	Fabric Panels Mural Panels	Case-to-Counter Conversion Kit included Ultimate LED Light Kits included Internal Shelves sold separately (see page 197) External Shelves sold separately (see page 197)

PANEL MATERIAL

SPLASH POP-UP DISPLAYS



BLOCK-OUT FABRIC
Block-out fabric keeps light from shining through your display for perfect photoshoots in well-lit areas.



POLYESTER KNIT
Dye sublimation on polyester knit produces vibrant, rich colors.

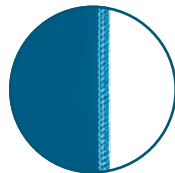


POLYESTER KNIT
Dye sublimation on polyester knit produces vibrant, rich colors.



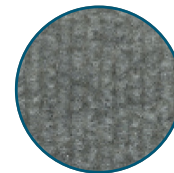
PREMIUM WOVEN POLYESTER
An ideal choice for backlit displays, premium woven polyester allows light to shine through.

GEOMETRIX POP-UP DISPLAYS

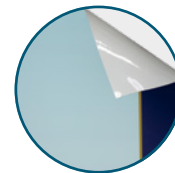


POLYESTER DOUBLE KNIT
Stretches both ways to create a taut fit on GeoMetrix frames; giving you countless options for setting up a creative display.

TRADITIONAL POP-UP DISPLAYS



HOOK-AND-LOOP RECEPTIVE FABRIC
High-quality polyester fiber.



MURAL PANEL
Titan™ no-curl laminated media is rigid so it will not wrinkle or curl.



Visit showdowndisplays.com for more information.

ASI: 87188 PPAL: 254687 SAGE: 67383 UPIC: SHOWDOWN

Showdown
DISPLAYS