

WHEN CHOOSING A BANNER HAVE YOU CONSIDERED...

- **LOCATION** - Will you be using this banner indoors or out?
- **USE** - Will you be hanging it on a wall? How about mounting it on a pole?
- **LONGEVITY** - How long will your banner be displayed?
- **WEATHER** - Are there extreme weather conditions to consider?
- **MESSAGE** - Do you need a single-sided or double-sided banner?



★ = Best Sellers	TITAN™ SCRIM VINYL					FABRIC			
	10 oz.	13 oz. ★	13 oz. Smooth	18 oz. Opaque	9 oz. Mesh	Nylon	Polyester Poplin	Super Poly Knit	Satin
DURABILITY	Light Duty	Average Duty	Average Duty	Heavy Duty	Heavy Duty	Average Duty	Light Duty	Average Duty	Light Duty
WIND CONDITIONS			Not for Outdoor Use				Not for Outdoor Use		Not for Outdoor Use
INDOOR USE	Good	Better		Better	Better	Better		Better	Better
OUTDOOR USE	Good	Better	Not for Outdoor Use				Not for Outdoor Use	Better	Not for Outdoor Use

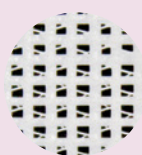
BANNER MATERIAL



SCRIM
Woven threads that provide added strength for a stronger vinyl banner.



SMOOTH
Vinyl without visible scrim texture for higher-quality images.



MESH
A woven vinyl pattern that features small holes so wind can pass through.



FABRIC
Breathable, lightweight cloth.

POPULAR FINISHING STYLES

Additional finishing styles available online.

Heat Weld

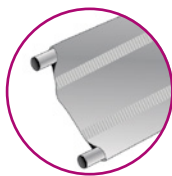
Single-sided vinyl banners only



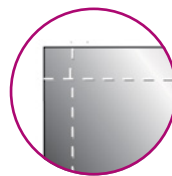
HEM & GROMMETS



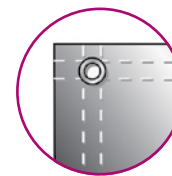
HEM, ROPE & GROMMETS



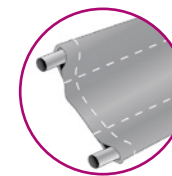
3" POLE POCKETS



HEM ONLY



HEM & GROMMETS



3" POLE POCKETS

Sewn

Fabric and double-sided vinyl banners



Visit showdowndisplays.com for more information.

ASI: 87188 PPAI: 254687 SAGE: 67383 UPIC: SHOWDOWN

