

# WHEN CHOOSING A BANNER HAVE YOU CONSIDERED...

- **LOCATION** - Will you be using this banner indoors or out?
- **USE** - Will you be hanging it on a wall? How about mounting it on a pole?
- **LONGEVITY** - How long will your banner be displayed?
- **WEATHER** - Are there extreme weather conditions to consider?
- **MESSAGE** - Do you need a single-sided or double-sided banner?



**BUILD YOUR OWN**  
CUSTOM SIZES, FINISHING AND QUOTES

BEST SELLERS ★	DURABILITY			WIND RATING	INDOOR USE	OUTDOOR USE
	LIGHT	AVERAGE	HEAVY-DUTY			
<b>TITAN™ SCRIM VINYL</b>						
10 oz.	X			5	good	good
13 oz. ★		X		6	better	better
13 oz. Smooth		X		not for outdoor use		not for outdoor use
18 oz. Opaque ★			X	6	better	
9 oz. Mesh ★			X	6	better	
<b>ECO-FRIENDLY</b>						
9 oz. PVC-Free		X		6	better	better
<b>FABRIC</b>						
Nylon		X		6	better	
Polyester Poplin	X			not for outdoor use		not for outdoor use
Super Poly Knit		X		4	better	better
Satin	X			not for outdoor use	better	not for outdoor use

**Beaufort Wind Rating:** Select products have been rated on the Beaufort Wind Scale. Wind ratings were determined utilizing all available securing/stabilizing options sold with or offered for the product. Review the Beaufort Scale on [showdowndisplays.com](http://showdowndisplays.com) for additional details.

## POPULAR FINISHING STYLES

Additional finishing styles available online.

### Heat Weld

Single-sided vinyl banners only



HEM & GROMMETS



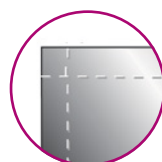
HEM, ROPE & GROMMETS



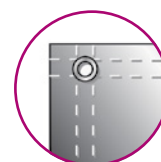
3" POLE POCKETS

### Sewn

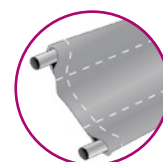
Fabric and double-sided vinyl banners



HEM ONLY



HEM & GROMMETS



3" POLE POCKETS

## BANNER MATERIAL



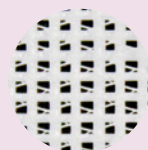
### SCRIM

Woven threads that provide added strength for a stronger vinyl banner.



### SMOOTH

Vinyl without visible scrim texture for higher-quality images.



### MESH

A woven vinyl pattern that features small holes so wind can pass through.



### FABRIC

Breathable, lightweight cloth.



Visit [showdowndisplays.com](http://showdowndisplays.com) for more information.

ASI: 87188 PPAI: 254687 SAGE: 67383 UPIC: SHOWDOWN

