

# WHEN CHOOSING A TABLE COVER HAVE YOU CONSIDERED...

- **SIZE** - What size is your table?
- **FABRIC/MEDIA** - What type of material are you looking for?
- **FREQUENCY** - How often will you be using your table throw?
- **MESSAGE** - Do you want a logo printed on the front, or would you like a full-color design that covers the full throw?

## 28 STOCK THROW COLORS

INTRODUCING 13 NEW STOCK THROW COLORS



\* indicates stock throw colors that closely align with our stock tent canopy colors.

NEW! LEMON PMS 109 *	NEW! PEACH PMS 162	NEW! FLAMINGO PMS 1767	PURPLE PMS VIOLET	ROYAL BLUE PMS 661	NEW! SHAMROCK PMS 361	WHITE *
YELLOW PMS 1235	NEW! CHERRY PMS 1795 *	NEW! HOT PINK PMS 219	NEW! AQUAMARINE PMS 2231	NAVY PMS 2767 *	HUNTER GREEN PMS 350	GRAY PMS 422
NEW! MANGO PMS 1375	RED PMS 201	NEW! MULBERRY PMS 683	NEW! COBALT PMS 2728 *	LIME GREEN PMS 375	NEW! HAZELNUT PMS 7575	CHARCOAL PMS 425
ORANGE PMS 1505	BURGUNDY PMS 504	NEW! GRAPE PMS 268	BLUEBERRY PMS 647	NEW! EMERALD PMS 346 *	BROWN PMS 476	BLACK *

PMS colors are for reference only and may vary slightly from actual color.

BEST SELLERS ★	RECTANGLE	PG #	TABLE SIZES					TABLE FIT	TABLE COVERAGE		MATERIAL	FINISHED EDGE	FR	WASH OPTIONS	PRINT OPTIONS				
			4'	6'	8'	12'	16'		3-SIDED	4-SIDED					FULL-COLOR IMPRINT	FULL-COLOR FRONT ONLY	FULL-COLOR FULL-BLEED		
NEW!	Antimicrobial	18	X	X	X			Drape	X	X	Antimicrobial Polyester Knit	Hemmed	✓	Machine			X		
	Convertible ★	12			X			Drape / Fitted		X	Polyester Poplin	Serged	✓	Machine		X	X		
NEW!	Economy ★	8	X	X	X	X	X	Drape	X		Polyester Poplin	Serged	✓	Machine		X	X		
	Enviro	19		X	X			Drape	X	X	Polyester Poplin	Serged	✓	Machine	X				
NEW!	Enviro Pro	19		X	X			Drape	X	X	Premium Eco Polyester	Serged	✓	Spot Clean			X		
	Fitted	21	X	X	X			Fitted		X	Polyester Poplin	Serged	✓	Machine		X	X		
	LazerLine ★	13		X	X			Drape	X	X	Polyester Poplin	Laser Cut	✓	Machine		X	X		
	Outdoor Fitted	21		X	X			Fitted		X	400 Denier Polyester	Serged	✓	Machine			X		
	Premium ★	14		X	X			Drape		X	Two-Way Stretch Fabric	Hemmed	✓	Machine			X		
	Stain-Resistant	22		X	X			Drape	X	X	Polyester Poplin	Serged	✓	Machine	X				
NEW!	Standard ★	10	X	X	X	X	X	Drape		X	Polyester Poplin	Serged	✓	Machine		X	X		
	Throw Glo	15		X	X			Fitted	X	X	Premium Woven Polyester	Serged	✓	Spot Clean			X		
	UltraFit Classic ★	16	X	X	X			Snug Fitted		X	Two-Way Stretch Fabric	Hemmed	✓	Machine			X		
	UltraFit Curve	16	X	X	X			Snug Fitted	X		Two-Way Stretch Fabric	Hemmed	✓	Machine			X		
	UltraFit Demo	17	X					Snug Fitted		X	Two-Way Stretch Fabric	Hemmed	✓	Machine			X		
	Value Lite	22		X	X			Drape		X	Polyester Pongee	Serged		Disposable	X <small>(white imprint only)</small>				
	<b>ROUND</b>		31.5" BAR	31.5" CAFE	3'	4'	5'		3-SIDED	4-SIDED						FULL-COLOR IMPRINT	FULL-COLOR FRONT ONLY	FULL-COLOR FULL-BLEED	
	Fitted Round	20	X					Fitted		X	Polyester Poplin	Serged	✓	Machine			X	X	
	Round	20	X	X	X	X	X	Drape		X	Polyester Poplin	Serged	✓	Machine				X	
	UltraFit Round	17	X					Snug Fitted		X	Two-Way Stretch Fabric	Hemmed	✓	Machine				X	
	<b>PARTIAL COVERAGE</b>		28"	57"	125"	149"	6'										FULL-COLOR IMPRINT	FULL-COLOR FRONT ONLY	FULL-COLOR FULL-BLEED
	Accent Runner	25	X	X				Drape	Partial Front, Top & Back		Polyester Satin	Satin Trim	✓	Machine			X	X	
	Lateral Runner	25			X	X		Drape	Top & Partial Sides		Polyester Poplin	Serged	✓	Machine			X <small>(top only)</small>	X	
NEW!	LazerLine Runner	24	X	X				Drape	Partial Front, Top & Back		Polyester Poplin	Laser Cut	✓	Machine			X	X	
	Standard Runner ★	23	X	X				Drape	Partial Front, Top & Back		Polyester Poplin	Serged	✓	Machine			X	X	
	UltraFit Crossover	17					X	Snug Fitted	Partial 4-Sided		Two-Way Stretch Fabric	Hemmed	✓	Machine				X	

NOTE: Flame-retardant certified in compliance with the National Fire Protection Association Standard No. 701.

## PRINT OPTIONS



### Full-Color Imprint

- Simple to complex graphics (see product pages for details)
- Vector art required; imprinted on front only
- Available in limited stock fabric colors only
- Min. and max. artwork size requirements apply
- Always roll your table throw for storage; do not fold



### Full-Color Front Only

- Simple to complex graphics
- Vector art preferred; imprinted on front only
- Available in stock fabric colors only
- Maximum artwork size requirements apply
- Large maximum imprint area for more graphic coverage
- Fold and store in included poly bag

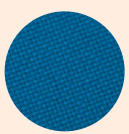


### Full-Color Full-Bleed

- Simple, complex and photographic graphics
- Vector and raster art accepted
- Art is dye sublimated on white fabric only
- Full-color artwork can be printed across the entire throw
- No artwork size requirements
- Fold and store in included poly bag

## TOP SELLER

### POLYESTER POPLIN



Lightweight and durable; our most popular fabric choice.

### TWO-WAY STRETCH FABRIC



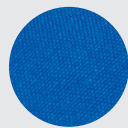
Nearly opaque with a luxurious look and a high-class hemmed finish.

### PREMIUM WOVEN POLYESTER

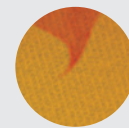


The backlit material allows for a glow effect when used with lights.

### POLYESTER PONGEE

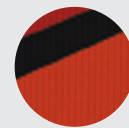


Lightweight and designed for limited use.



The same durable, weather-resistant material we use for our tent canopies.

### PREMIUM ECO POLYESTER



100% recycled fabric reveals excellent and vibrant print quality.

### ANTIMICROBIAL POLYESTER KNIT



Heavyweight media that inhibits the spread of viruses and other germs.

## THROW MEDIA



Visit [showdowndisplays.com](http://showdowndisplays.com) for more information.

ASI: 87188 PPAI: 254687 SAGE: 67383 UPIC: SHOWDOWN

