

BUYER'S GUIDE TO TENTS

Also Known As: Canopies • Pop-Up Tents • Pop-Up Canopies
Trade Show Canopies • Instant Canopies • Portable Shelters



EASY AS 1-2-3!

1. How frequently will you be using your tent?
2. What is the desired impact of your message?
3. Do you need additional branding options like full or half walls?

SHOWDOWNDISPLAYS.COM • INFO@SHOWDOWNDISPLAYS.COM



ASI: 87188 PPAT: 254687 SAGE: 67383 UPIC: SHOWDOWN

Showdown[®]
DISPLAYS



Stock throw colors closely align with stock tent colors; excludes Blaze Orange.



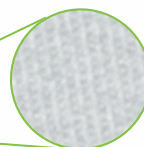
Pinch-free height adjustment.



Easy-Glide Tent Feet allow the tent frame to slide on dirt and grass, preventing the legs from catching. US Patent #D760857



Crank-up canopy creates a taut, clean peak.



High-quality, weather-resistant, UV protected 50+, 400 denier polyester canopy.

All Kits Include:



Soft carry case with wheels



Stake kit

GOOD

Standard 10' Tent

(See page 95 in our 2023 Product Guide)



Frame is constructed of steel and features 1.125" square legs.



Legs include plastic push buttons for pinch-free height adjustments.



Tent frame is covered by a lifetime warranty.

BETTER

Deluxe 10' Tent

(See page 96 in our 2023 Product Guide)



Frame is constructed of steel and features 1.25" square legs.



Legs include plastic levers for pinch-free height adjustments.



Tent frame is covered by a lifetime warranty.

BEST

Elite 10' Tent

(See page 103 in our 2023 Product Guide)



Frame is constructed of aluminum and features 2.125" hexagon legs.



Legs feature levers for easy height adjustments.



Tent frame is covered by a lifetime warranty.

MAXIMIZE YOUR IMPACT

FULL-COLOR IMPRINT

Imprinted on peak and valance locations of your choice.



Stocked in eight colors

FULL-BLEED DYE SUBLIMATION

Covers the entire canopy with vibrant, full-color artwork.



PERSONALIZE WITH ACCESSORIES

There are dozens of options for customizing your tent, including detachable tent walls and more.

