






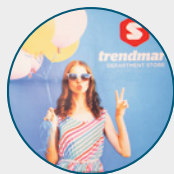


# POP-UP DISPLAY COMPARISON CHART

BEST SELLERS ★ SUSTAINABLE ◆	EASE OF SETUP	FRAME WARRANTY	FRAME DETAILS	PANEL INSTALLATION	PANEL MATERIAL	ADD-ON OPTIONS <small>SOLD SEPARATELY</small>
NEW! Splash ★ ◆	●●●	2 years	<ul style="list-style-type: none"> <li>high-grade 0.03" aluminum frame</li> <li>scissor construction</li> <li>bayonet locking system</li> <li>medium-weight nylon connecting hubs</li> </ul>	 Hook-and-loop fasteners	Recycled Polyester Knit Block-Out Fabric	Ultimate LED Light Kits
GeoMetrix	●●●●	1 year	<ul style="list-style-type: none"> <li>lightweight 0.03" aluminum</li> <li>spring-action pop-up frame</li> </ul>	 Reinforced buttonholes on panels attach to pegs on the frame's hubs	Polyester Double Knit	Ultimate LED Light Kits
Deluxe GeoMetrix ★	●●●	2 years	<ul style="list-style-type: none"> <li>high-grade 0.03" aluminum frame</li> <li>scissor construction</li> <li>bayonet locking system</li> <li>medium-weight nylon connecting hubs</li> <li>rectangular extrusions for stability and shelf strength</li> </ul>	 Reinforced buttonholes on panels attach to pegs on the frame's hubs	Polyester Double Knit	Ultimate LED Light Kits Internal Shelf Stabilizer Feet Connector Shelf Edge Graphic Panels
Deluxe GeoMetrix Connector	●●	2 years	<ul style="list-style-type: none"> <li>high-grade 0.03" aluminum frame</li> <li>scissor construction</li> <li>bayonet locking system</li> <li>medium-weight nylon connecting hubs</li> <li>rectangular extrusions for stability and shelf strength</li> </ul>	 Reinforced buttonholes on panels attach to pegs on the frame's hubs	Polyester Double Knit	Ultimate LED Light Kits Internal Shelf Stabilizer Feet Connector Shelf
Echo	●●	1 year	<ul style="list-style-type: none"> <li>lightweight 0.03" aluminum</li> <li>spring-action pop-up frame</li> </ul>	 Individual locking channel bars for magnet-to-steel panel registration	Fabric Panels Mural Panels	Ultimate LED Light Kits (included with select kits)
Show 'N Rise	●●●	2 years	<ul style="list-style-type: none"> <li>high-grade 0.03" aluminum frame</li> <li>scissor construction</li> <li>bayonet locking system</li> <li>medium-weight nylon connecting hubs</li> <li>rectangular extrusions for stability and shelf strength</li> </ul>	 Shock cord magnet rails for magnet-to-magnet panel registration	Fabric Panels Mural Panels	Internal Shelf
ARISE	●●●●	Lifetime	<ul style="list-style-type: none"> <li>high-grade 0.04" extruded aluminum frame</li> <li>self-locking scissor construction</li> <li>medium-weight nylon connecting hubs</li> </ul>	 Magnets connect bars to the frame for magnet-to-magnet panel registration	Fabric Panels Mural Panels	Internal Shelf

## PANEL MATERIAL

### SPLASH POP-UP DISPLAYS



**BLOCK-OUT FABRIC**  
Block-out fabric keeps light from shining through your display for perfect photoshoots in well-lit areas.

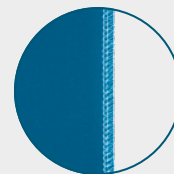
**RECYCLED POLYESTER KNIT**  
Sustainable recycled polyester knit is made with REPREVE® fibers recycled from plastic bottles.

### TRADITIONAL POP-UP DISPLAYS

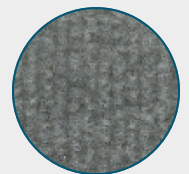


**MURAL PANEL**  
Titan™ no-curl laminated media is rigid so it will not wrinkle or curl.

### GEOMETRIX POP-UP DISPLAYS



**POLYESTER DOUBLE KNIT**  
Stretches both ways to create a taut fit on GeoMetrix frames; giving you countless options for setting up a creative display.



**HOOK-AND-LOOP-RECEPTIVE FABRIC**  
High-quality polyester fiber.

