

BUYER'S GUIDE TO TABLE COVERS

Also Known As: Table Throws • Table Cloths • Table Skirts • Table Coverings

EASY AS 1-2-3!

1. How often will you be using your table throw?
2. Does your throw need to cover all four sides of the table, or would you like an open back?
3. Do you want a logo printed on the front, or would you like a full-color design that covers the entire throw?



Visit showdowndisplays.com for more information.

ASI: 87188 PPAL: 254687 SAGE: 67383 UPIC: SHOWDOWN

Showdown[®]
DISPLAYS

BUYER'S GUIDE TO TABLE COVERS

Also Known As: Table Throws • Table Cloths • Table Skirts • Table Coverings



6' throw with full-color imprint



6' throw with full-bleed dye sublimation

GOOD

Economy Throws

(See page 8 in our 2019 Product Guide.)



Three-sided design with draped corners and an open back



Polyester poplin is available in 15 stock colors



Product is covered by a one-year warranty

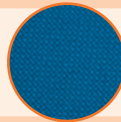
BETTER

Standard Throws

(See page 10 in our 2019 Product Guide.)



Four-sided design with draped corners



Polyester poplin is available in 15 stock colors



Product is covered by a one-year warranty

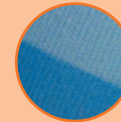
BEST

Premium Throws

(See page 13 in our 2019 Product Guide.)



Four-sided design with draped corners



Two-way stretch fabric is nearly opaque and virtually wrinkle-free



Product is covered by a one-year warranty

MAXIMIZE THE IMPACT OF YOUR MESSAGE

FULL-COLOR IMPRINT

A full-color design imprinted on one or two locations on the table throw.

- Graphics can range in complexity from a simple one-color design to a more detailed full-color design
- Available on stock fabric colors only
- Always roll your table throw for storage; do not fold on imprint side
- Not available on Premium throws



FULL-BLEED DYE SUBLIMATION

Covers the entire table throw with vibrant, full-color graphics.

- Ideal for complex designs, photographic images or art with gradients
- Art is dye sublimated (four-color CMYK process) on white fabric only
- Fold and store in the included vinyl zip bag

