

BUYER'S GUIDE TO TENTS

Also Known As: Canopies • Pop-Up Tents • Pop-Up Canopies
Trade Show Canopies • Instant Canopies • Portable Shelters

EASY AS 1-2-3!

1. How frequently will you be using your tent?
2. What is the desired impact of your imprinted message?
3. Do you need additional branding options like tent walls or leg cuffs?



showdowndisplays.com • SDCanadaInfo@signzoneinc.com
All prices in US Dollars



ASI: 87188 PPAI: 254687 SAGE: 51697 UPIC: SHOWDOWN PPPC 20101202

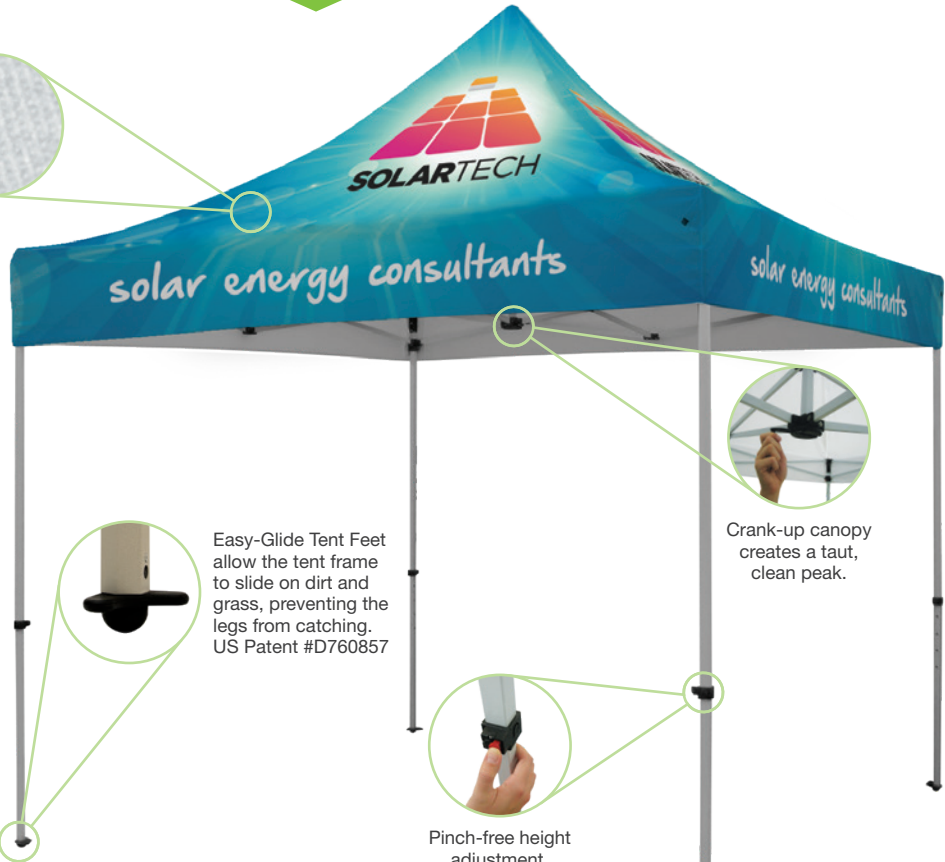
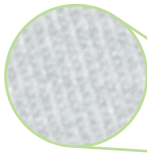


Showdown[®]
DISPLAYS

BUYER'S GUIDE TO TENTS

Also Known As: Canopies • Pop-Up Tents • Pop-Up Canopies • Trade Show Canopies • Instant Canopies • Portable Shelters

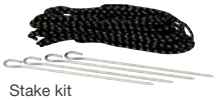
High-quality, weather-resistant, UV protected 50+, 400 denier polyester canopy.



All Kits Include:



Soft carry case with wheels



Stake kit

GOOD Standard 10' Tent

(See page 86 in our 2019 Product Guide.)



Frame is constructed of steel and features 1.125" square legs



Legs include plastic push buttons for pinch-free height adjustments



Hardware is covered by a one-year warranty

BETTER Deluxe 10' Tent

(See page 87 in our 2019 Product Guide.)



Frame is constructed of steel and features 1.25" square legs



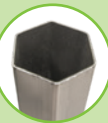
Legs include plastic levers for pinch-free height adjustments



Hardware is covered by a two-year warranty

BEST Premium 10' Tent

(See page 88 in our 2019 Product Guide.)



Frame is constructed of aluminum and features 1.75" hexagon legs



Legs include plastic levers for pinch-free height adjustments

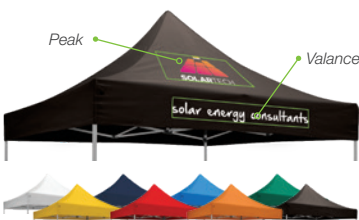


Hardware is covered by a five-year warranty

MAXIMIZE THE IMPACT OF YOUR MESSAGE

FULL-COLOR IMPRINT

Imprinted on peak and valance locations of your choice.



Stocked in eight colors

FULL-BLEED DYE SUBLIMATION

Covers the entire canopy with vibrant, full-color artwork.



PERSONALIZE WITH ACCESSORIES

There are dozens of options for customizing your tent, including detachable tent walls, ballasts and more.

