

# WHEN CHOOSING A BANNER HAVE YOU CONSIDERED...

- **LOCATION** - Will you be using this banner indoors or out?
- **USE** - Will you be hanging it on a wall? How about mounting it on a pole?
- **LONGEVITY** - How long will your banner be displayed?
- **WEATHER** - Are there extreme weather conditions to consider?
- **MESSAGE** - Do you need a single-sided or double-sided banner?



★ = Best Sellers	Titan™ 10 oz. Scrim Vinyl	Titan™ 13 oz. Scrim Vinyl ★	Titan™ 13 oz. Smooth Scrim Vinyl	Titan™ 18 oz. Opaque Scrim Vinyl	Titan™ 9 oz. Mesh Vinyl	Polyester Poplin	Super Poly Knit Fabric	Aluminum Fabric
<b>DURABILITY</b>	Light Duty	Average Duty	Average Duty	Heavy Duty	Heavy Duty	Light Duty	Average Duty	Average Duty
<b>WIND CONDITIONS</b>			Not Recommended for Outdoor Use			Not Recommended for Outdoor Use		
<b>INDOOR USE</b>	Good	Better		Better	Better		Better	Better
<b>OUTDOOR USE</b>	Good	Better	Not Recommended for Outdoor Use			Not Recommended for Outdoor Use	Better	Better

## POPULAR FINISHING STYLES

Additional finishing styles available online.

### VINYL BANNERS



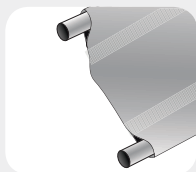
#### Heat Weld Hem & Grommets

Single fold weld with grommets located every 2'



#### Heat Weld Hem, Rope & Grommets

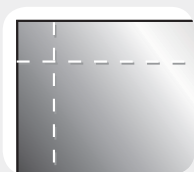
Single fold weld with grommets located every 2' and rope along the top and bottom



#### Heat Weld & 3" Pole Pockets

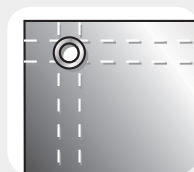
Single fold weld with welded 3" pole pockets (accommodates a 1.5" dia. pole, not included)

### FABRIC BANNERS



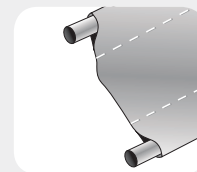
#### Sewn Hem Only

Double folded/single stitched



#### Sewn Hem & Grommets

Double folded/double stitched with grommets located every 2'



#### 3" Pole Pockets

Double folded/single stitched 3" pole pockets (accommodates a 1.5" dia. pole, not included)



## QUICK & EASY ONLINE BANNER ORDERING!

Visit our website for accurate quotes and hassle-free banner ordering 24/7

Under the Banners & Flags tab, click the Custom Banners option.



Visit [www.showdowndisplays.com](http://www.showdowndisplays.com) for more information.



ASI: 87188 PPAL: 254687 SAGE: 67383 UPIC: SHOWDOWN

