

# WHEN CHOOSING A BANNER HAVE YOU CONSIDERED...

- **LOCATION** - Will you be using this banner indoors or out?
- **USE** - Will you be hanging it on a wall? How about mounting it on a pole?
- **LONGEVITY** - How long will your banner be displayed?
- **WEATHER** - Are there extreme weather conditions to consider?
- **MESSAGE** - Do you need a single-sided or double-sided banner?



★ = Best Sellers	TITAN™ SCRIM VINYL					FABRIC		
	10 oz.	13 oz. ★	13 oz. Smooth	18 oz. Opaque	9 oz. Mesh	Polyester Poplin	Super Poly Knit	Satin <b>NEW</b>
DURABILITY	Light Duty	Average Duty	Average Duty	Heavy Duty	Heavy Duty	Light Duty	Average Duty	Light Duty
WIND CONDITIONS			Not Recommended for Outdoor Use			Not Recommended for Outdoor Use		Not Recommended for Outdoor Use
INDOOR USE	Good	Better	<b>BEST</b>	Better	Better	<b>BEST</b>	Better	Better
OUTDOOR USE	Good	Better	Not Recommended for Outdoor Use	<b>BEST</b>	<b>BEST</b>	Not Recommended for Outdoor Use	Better	Not Recommended for Outdoor Use

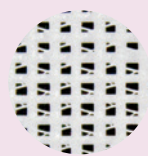
## BANNER MATERIAL



**SCRIM**  
Woven threads that provide added strength for a stronger vinyl banner.



**SMOOTH**  
Vinyl without visible scrim texture for higher-quality images.



**MESH**  
A woven vinyl pattern that features small holes so wind can pass through.



**FABRIC**  
Breathable, lightweight cloth.

## POPULAR FINISHING STYLES

Additional finishing styles available online.

### Heat Weld

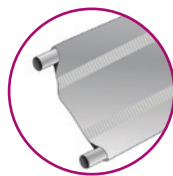
Single-sided vinyl banners only



HEAT WELD HEM & GROMMETS



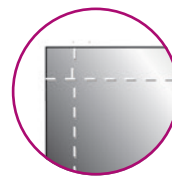
HEAT WELD HEM, ROPE & GROMMETS



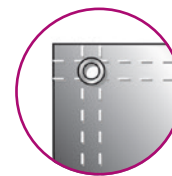
HEAT WELD & 3" POLE POCKETS

### Sewn

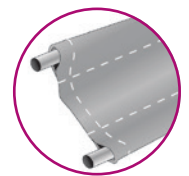
Fabric and double-sided vinyl banners



SEWN HEM ONLY



SEWN HEM & GROMMETS



3" POLE POCKETS

Visit [showdowndisplays.com](http://showdowndisplays.com) for more information.



ASI: 87188 PPAI: 254687 SAGE: 67383 UPIC: SHOWDOWN

**Showdown**  
DISPLAYS