

WHEN CHOOSING A TENT HAVE YOU CONSIDERED...

- **LOCATION** - Where will this tent be used?
- **LONGEVITY** - Is this a long-term or short-term application?
- **MESSAGE** - What is the desired impact of your promotional message?
- **WEATHER** - Do you need ballasts or stakes?



★ = Best Sellers		PG	FRAME/CANOPY WARRANTY	CONSTRUCTION			FRAME WEIGHT (LBS.)	TOTAL SIZE	QUICK SHIP OPTIONS	STOCK CANOPY COLORS
10' TENTS - MOST POPULAR SIZE	10' Standard ★	104	1 Year / 1 Year	Steel 1.125" Legs		1 mm Powder-Coated Steel Plastic Push Button for Height Adjustments ABS Nylon Joints		118.5"W x 127.5"-140"H x 118.5"D		
	10' Deluxe	105	2 Years / 1 Year	Steel 1.25" Legs		1 mm Powder-Coated Steel Lever for Height Adjustments ABS Glass-Filled Nylon Joints		118.5"W x 127"-139.5"H x 118.5"D		
	10' Premium ★	106	5 Years / 1 Year	Aluminum 1.75" Dia. Hexagon Legs		0.8 mm Anodized Aluminum Lever for Height Adjustments ABS Glass-Filled Nylon Joints		118"W x 126.75"-139.25"H x 118"D		
	NEW! 10' Elite	107	Lifetime / 1 Year	Aluminum 2.125" Dia. Hexagon Legs		50 mm Anodized Aluminum Lever for Height Adjustments Machined Aluminum Joints		118"W x 116.75"-128.25"H x 118"D		
	10' Compact	108	1 Year / 1 Year	Aluminum 1.25" Legs		1 mm Anodized Aluminum Lever for Height Adjustments ABS Glass-Filled Nylon Joints		118.5"W x 121"-133.5"H x 118.5"D		
	NEW! 10' Premium Gable	112	5 Years / 1 Year	Aluminum 1.75" Dia. Hexagon Legs		0.8 mm Anodized Aluminum Lever for Height Adjustments ABS Glass-Filled Nylon Joints		118"W x 119.25"-131.75"H x 118"D		
	6' Deluxe	110	2 Years / 1 Year	Steel 1.25" Legs		1 mm Powder-Coated Steel		72"W x 109"-121.5"H x 72"D		
	8' Deluxe					Lever for Height Adjustments ABS Glass-Filled Nylon Joints		96"W x 117.5"-130"H x 96"D		
	15' Premium	111	5 Years / 1 Year	Aluminum 1.75" Dia. Hexagon Legs		0.8 mm Anodized Aluminum		175.5"W x 126.75"-139.25"H x 118.25"D		
	20' Premium					Lever for Height Adjustments ABS Glass-Filled Nylon Joints		234.5"W x 126.75"-139.25"H x 118.25"D		
	NEW! 15' Premium Gable	112	5 Years / 1 Year	Aluminum 1.75" Dia. Hexagon Legs		0.8 mm Anodized Aluminum		175.5"W x 119.25"-131.75"H x 118.25"D		
	NEW! 20' Premium Gable					Lever for Height Adjustments ABS Glass-Filled Nylon Joints		234.5"W x 119.25"-131.75"H x 118.25"D		
Wind Test Assessment - All of our tents are rated to withstand winds up to 25 mph. We recommend ground stakes with rope and two steel ballasts or one water weight per leg.										
Disclaimer: Wind rating conducted in a controlled environment. Outdoor products should be taken down if bad weather is likely. Wind gusts and heavy rain could reduce the wind resistance of these products.										

TENT CANOPY



Canopies covered by a one-year warranty.



Constructed of durable 400 denier polyester.



50+ UV protection and weather-resistant.



Flame retardant treated (FR rated for exhibit halls).

10' Stock Canopy Colors



PMS colors are for reference only and may vary slightly from actual color.

Two Print Methods



Full-Color Imprint

Imprinted on peak and valance locations of your choice. One imprint per location (peak or valance). Only one setup fee per tent.

Dye Sublimation

Covers the entire canopy with vibrant, full-color artwork.*

*Not available on vented canopies

Visit showdowndisplays.com for more information.



ASI: 87188 PPAL: 254687 SAGE: 67383 UPIC: SHOWDOWN

Showdown
DISPLAYS

WHEN CHOOSING A SAIL SIGN HAVE YOU CONSIDERED...

- **LOCATION** - Will you be using this product indoors or out?
- **LONGEVITY** - How long will your flag be displayed?
- **MESSAGE** - Do you need a single-sided or double-sided flag?
- **WEATHER** - Are there extreme weather conditions to consider?



GOOD

Value Sail Signs

- Vibrant dye sublimation on super poly knit fabric
- Value hardware
- Value spike or Value cross base



BETTER

Streamline Sail Signs

- Vibrant dye sublimation on super poly knit fabric
- Premium hardware
- Ground spike, scissor base or three-legged base

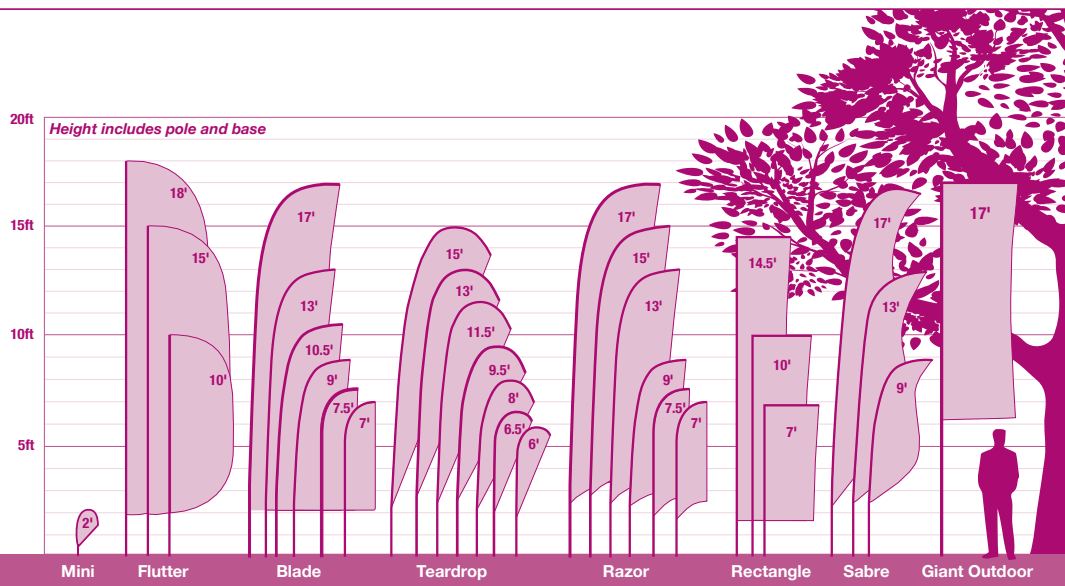


BEST

Premium Sail Signs

- Vibrant dye sublimation on super poly knit fabric
- Premium hardware
- Ground spike, scissor base or three-legged base

	VALUE HARDWARE	PREMIUM HARDWARE
Pole Construction	<p>Channelled carbon composite overlay construction with low-gloss black paint finish.</p> <p>Double-reinforced carbon fiber pole segment ends.</p>	<p>Uniform carbon composite overlay construction with high-gloss black paint finish.</p> <p>Polished aluminum collar pole segment ends and ergonomic, rubber-reinforced base grip.</p>
Flag Attachment	<p>A loop on the flag attaches to an adjustable hook on the pole.</p>	<p>Flag attaches to a fixed hook using a bungee cord.</p>
Carry Case	Sold separately	✓
Hardware Warranty	90 Days	Lifetime



Wind Test Assessment:

6'-11.5' to withstand winds up to 30 mph with use of water ballast or a ground spike in firm ground.
13'-18' to withstand winds up to 20 mph with use of water ballast or a ground spike in firm ground.

Flag Warranty: Flags used outdoors have a 90-day warranty. Flags used indoors have a 1-year warranty.

Disclaimer:

Wind rating conducted in a controlled environment. Outdoor products should be taken down if bad weather is likely. Wind gusts and heavy rain could reduce the wind resistance of these products. Flutter Flags Have not been rated for wind conditions.

Visit showdowndisplays.com for more information.



ASI: 87188 PPAL: 254687 SAGE: 67383 UPIC: SHOWDOWN

Showdown
DISPLAYS

WHEN CHOOSING A BANNER HAVE YOU CONSIDERED...

- **LOCATION** - Will you be using this banner indoors or out?
- **USE** - Will you be hanging it on a wall? How about mounting it on a pole?
- **LONGEVITY** - How long will your banner be displayed?
- **WEATHER** - Are there extreme weather conditions to consider?
- **MESSAGE** - Do you need a single-sided or double-sided banner?



★ = Best Sellers	TITAN™ SCRIM VINYL					FABRIC			
	10 oz.	13 oz. ★	13 oz. Smooth	18 oz. Opaque	9 oz. Mesh	Nylon	Polyester Poplin	Super Poly Knit	Satin
DURABILITY	Light Duty	Average Duty	Average Duty	Heavy Duty	Heavy Duty	Average Duty	Light Duty	Average Duty	Light Duty
WIND CONDITIONS			Not Recommended for Outdoor Use				Not Recommended for Outdoor Use		Not Recommended for Outdoor Use
INDOOR USE	Good	Better		Better	Better	Better		Better	Better
OUTDOOR USE	Good	Better	Not Recommended for Outdoor Use				Not Recommended for Outdoor Use	Better	Not Recommended for Outdoor Use

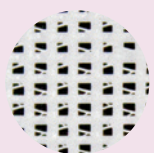
BANNER MATERIAL



SCRIM
Woven threads that provide added strength for a stronger vinyl banner.



SMOOTH
Vinyl without visible scrim texture for higher-quality images.



MESH
A woven vinyl pattern that features small holes so wind can pass through.



FABRIC
Breathable, lightweight cloth.

POPULAR FINISHING STYLES

Additional finishing styles available online.

Heat Weld

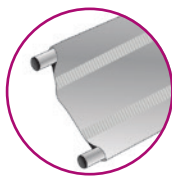
Single-sided vinyl banners only



HEM & GROMMETS



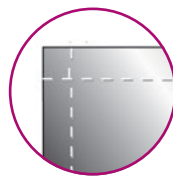
HEM, ROPE & GROMMETS



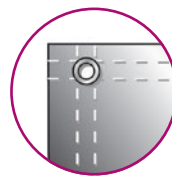
3" POLE POCKETS

Sewn

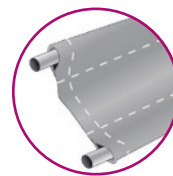
Fabric and double-sided vinyl banners



HEM ONLY



HEM & GROMMETS



3" POLE POCKETS

Visit showdowndisplays.com for more information.



ASI: 87188 PPAL: 254687 SAGE: 67383 UPIC: SHOWDOWN

Showdown
DISPLAYS

WHEN CHOOSING A RETRACTOR HAVE YOU CONSIDERED...

- **USE** - Will this product be used on a floor or on a tabletop?
- **FLEXIBILITY** - Will your graphic be permanent, or will you be swapping it out frequently?
- **FREQUENCY** - How often will your retractor be set up and taken down?
- **LOCATION** - Will your retractor be used indoors or out?
- **MESSAGE** - Do you want a single-sided or double-sided display?



★ = Best Sellers		PG	VIEWABLE GRAPHIC	COST	TELESCOPING POLE	CHANGEABLE BANNER	ADJUSTABLE TENSION	2-SIDED OPTION	BANNER MEDIA (See Definitions Below)	RCAT RATING <i>Minimum Retractions</i>	HARDWARE WARRANTY
GOOD	Small Mini Promo	45	8.25"W x 12"H	\$					Polypropylene Media	NA	6 Months
	Large Mini Promo	45	11.75"W x 16.5"H	\$					Polypropylene Media	NA	6 Months
	Deluxe Mini	45	8.25"W x 16.25"H	\$					Polypropylene Media	NA	6 Months
	31.5" Ideal	28	31.25"W x 79.5"H	\$				✓	Polypropylene Media	25	2 Months
	33.5" Ideal	28	33.25"W x 79.5"H	\$				✓	Polypropylene Media	25	2 Months
	31.5" Value	29	31.5"W x 79.5"H	\$					Polypropylene Media	50	6 Months
	33.5" Value	29	33.5"W x 79.5"H	\$					Polypropylene Media	50	6 Months
	36" Value	29	36"W x 79.5"H	\$					No-Curl Hybrid Media	50	6 Months
	Tabletop Economy ★	30	24"W x 35.5"H	\$					No-Curl Hybrid Media	100	1 Year
	24" Economy ★	30	24"W x 78.5"H	\$					No-Curl Hybrid Media	100	1 Year
	31.5" Economy ★	30	31.5"W x 78.5"H	\$					No-Curl Hybrid Media	100	1 Year
	33.5" Economy ★	30	33.5"W x 78.5"H	\$					No-Curl Hybrid Media	100	1 Year
BETTER	36" Economy ★	30	36"W x 78.5"H	\$					No-Curl Hybrid Media	100	1 Year
	48" Economy ★	30	47.25"W x 78.5"H	\$					No-Curl Hybrid Media	100	1 Year
	31.5" Economy Plus ★	32	31.5"W x 58"-78.5"H	\$\$	✓	✓			No-Curl Hybrid Media	150	2 Years
	33.5" Economy Plus ★	32	33.5"W x 58"-78.5"H	\$\$	✓	✓			No-Curl Hybrid Media	150	2 Years
	24" Stratus ★	33	24"W x 64.375"-78.5"H	\$\$	✓	✓			No-Curl Hybrid Media	200	2 Years
	31.5" Stratus ★	33	31.5"W x 64.375"-78.5"H	\$\$	✓	✓			No-Curl Hybrid Media	200	2 Years
	33.5" Stratus ★	33	33.5"W x 64.375"-78.5"H	\$\$	✓	✓			No-Curl Hybrid Media	200	2 Years
	36" Stratus ★	33	36"W x 64.375"-78.5"H	\$\$	✓	✓			No-Curl Hybrid Media	200	2 Years
	48" Stratus ★	33	47.75"W x 64.375"-78.5"H	\$\$	✓	✓			No-Curl Hybrid Media	200	2 Years
	33.5" Deluxe Pro ★	34	33.5"W x 61.5"-79.5"H	\$\$	✓	✓		✓	No-Curl Hybrid Media	200	2 Years
	46.5" Deluxe Pro ★	34	46.5"W x 61.5"-79.5"H	\$\$	✓	✓		✓	No-Curl Hybrid Media	200	2 Years
	31" Change Agent	35	31"W x 69"-80"H	\$\$	✓	✓			No-Curl Hybrid Media	300	2 Years
BEST	33" Change Agent	35	33"W x 69"-80"H	\$\$	✓	✓			No-Curl Hybrid Media	300	2 Years
	36" Change Agent	35	36"W x 69"-80"H	\$\$	✓	✓			No-Curl Hybrid Media	300	2 Years
	24" Optimum	36	23.75"W x 56.75"-78.75"H	\$\$\$	✓	✓		✓	No-Curl Hybrid Media	800	3 Years
	31.5" Optimum	36	31.5"W x 56.75"-78.75"H	\$\$\$	✓	✓		✓	No-Curl Hybrid Media	800	3 Years
	40" Optimum	36	40"W x 56.75"-78.75"H	\$\$\$	✓	✓		✓	No-Curl Hybrid Media	800	3 Years
	Superb ★	37	33.5"W x 31.5"-78"H	\$\$\$	✓	✓	✓		No-Curl Hybrid Media	800	Lifetime
	XChange	37	33"W x 62.625"-79"H	\$\$\$	✓	✓	✓		No-Curl Hybrid Media	800	3 Years
	MagnaChange	38	33.5"W x 26"-90"H	\$\$\$	✓	✓	✓		No-Curl Hybrid Media	800	3 Years
	Lumos	39	33.5"W x 26"-90"H	\$\$\$	✓	✓	✓		No-Curl Hybrid Media	800	3 Years
	Tabletop MagnaLink	45	15.75"W x 42.25"-50"H	\$\$\$	✓	✓	✓		No-Curl Hybrid Media	800	3 Years
	16" MagnaLink	40	15.75"W x 82.25"-90"H	\$\$\$	✓	✓	✓		No-Curl Hybrid Media	800	3 Years
	33.5" MagnaLink	40	33.375"W x 29.875"-90"H	\$\$\$	✓	✓	✓		No-Curl Hybrid Media	800	3 Years
SPECIALTY	60" MagnaLink	40	59"W x 29.875"-90"H	\$\$\$	✓	✓	✓		No-Curl Hybrid Media	800	3 Years
	Outdoor	41	31.5"W x 53.75"-79.5"H	\$\$	✓				13 oz. Scrim Vinyl	150	1 Year
	Outdoor Trek Lite	41	33.25"W x 77.25"H	\$\$\$				✓	13 oz. Scrim Vinyl	250	1 Year
	NEW! Element	42	33.25"W x 37"-80.25"H	\$\$\$	✓			✓	13 oz. Scrim Vinyl	150	1 Year
	NEW! 4' Outdoor A-Frame	43	47.5"W x 40"H	\$\$\$				✓	13 oz. Scrim Vinyl	100	1 Year
	NEW! 5' Outdoor A-Frame	43	59.25"W x 40"H	\$\$\$				✓	No-Curl Hybrid Media	100	1 Year
	5' Jumbo Wide	44	59.75"W x 78.75"H	\$\$\$					No-Curl Hybrid Media	100	1 Year
	6' Jumbo Wide	44	71.75"W x 78.75"H	\$\$\$					No-Curl Hybrid Media	100	1 Year
	8' Jumbo Wide	44	94.75"W x 78.75"H	\$\$\$					13 oz. Smooth Scrim Vinyl	100	1 Year

BANNER MEDIA

TITAN™ NO-CURL HYBRID MEDIA



Anti-curl properties for a taut banner.

TITAN™ NO-CURL OPAQUE FABRIC



High-quality fabric that prevents curling. Silver backing makes it opaque.

TITAN™ NO-CURL FABRIC



Lightweight, no-glare fabric prevents curling.

DRY-ERASE MEDIA



Smooth, gloss surface that can be written or drawn on with a dry-erase marker.

TITAN™ 13 OZ. SMOOTH SCRIM VINYL



Smooth vinyl material, ideal for high-quality graphics.

TITAN™ 13 OZ. SCRIM VINYL



Durable vinyl repels water and cleans easily for extended outdoor use.

TITAN™ POLYPROPYLENE MEDIA



Tear-resistant matte media for temporary use.

Visit showdowndisplays.com for more information.



ASI: 87188 PPAL: 254687 SAGE: 67383 UPIC: SHOWDOWN

Showdown
DISPLAYS

WHEN CHOOSING A TABLE COVER HAVE YOU CONSIDERED...

- **SIZE** - What size is your table?
- **FABRIC/MEDIA** - What type of material are you looking for?
- **FREQUENCY** - How often will you be using your table throw?
- **USE** - Will people be sitting at the table, or will it be used to showcase merchandise or promotional materials?
- **MESSAGE** - Do you want a logo printed on the front, or would you like a full-color design that covers the full throw?

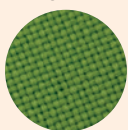


★ = Best Sellers		PG	SIZES	FIT	TABLE COVERAGE	TABLE COVER MATERIAL	EDGE FINISHING	FLAME RETARDANT	WASHABLE	QUICK SHIP OPTIONS	PRINT OPTIONS
RECTANGULAR	Value Lite	23	6' & 8'	Drape	4-Sided	Polyester Pongee	Serged		Disposable		1-Color White Imprint Only
	NEW! LazerLine	22	4', 6' & 8'	Drape	3-Sided & 4-Sided	Polyester Poplin	Laser Cut	✓	Machine		Full-Color Front Only
	Economy ★	8	4', 6' & 8'	Drape	3-Sided	Polyester Poplin	Serged	✓	Machine		Full-Color Front Only Full-Color Full-Bleed
	Standard ★	10	4', 6' & 8'	Drape	4-Sided	Polyester Poplin	Serged	✓	Machine		Full-Color Front Only Full-Color Full-Bleed
	Enviro	20	6' & 8'	Drape	3-Sided & 4-Sided	Polyester Poplin	Serged	✓	Machine		Full-Color Imprint
	Stain-Resistant	21	6' & 8'	Drape	3-Sided & 4-Sided	Polyester Poplin	Serged	✓	Machine		Full-Color Imprint
	Fitted	16	4', 6' & 8'	Fitted	4-Sided	Polyester Poplin	Serged	✓	Machine		Full-Color Front Only Full-Color Full-Bleed
	Convertible ★	12	8' Converts to 6'	Drape Converts to Fitted	4-Sided	Polyester Poplin	Serged	✓	Machine		Full-Color Front Only Full-Color Full-Bleed
	Satin	19	6' & 8'	Drape	3-Sided & 4-Sided	Polyester Satin	Serged	✓	Machine		Full-Color Full-Bleed
	UltraFit Demo	15	4'	Snug Fitted	4-Sided	Two-Way Stretch Fabric	Hemmed	✓	Machine		Full-Color Full-Bleed
	Outdoor Fitted	17	6' & 8'	Fitted	4-Sided	400 Denier Polyester	Serged	✓	Machine		Full-Color Full-Bleed
	Premium	13	6' & 8'	Drape	4-Sided	Two-Way Stretch Fabric	Hemmed	✓	Machine		Full-Color Full-Bleed
	UltraFit Curve	14	4', 6' & 8'	Snug Fitted	3-Sided	Two-Way Stretch Fabric	Hemmed	✓	Machine		Full-Color Full-Bleed
	UltraFit Classic ★	14	4', 6' & 8'	Snug Fitted	4-Sided	Two-Way Stretch Fabric	Hemmed	✓	Machine		Full-Color Full-Bleed
ROUND	Fitted Round	18	31.5" Bar-Height	Fitted	4-Sided	Polyester Poplin	Serged	✓	Machine		Full-Color Front Only Full-Color Full-Bleed
	Round	18	31.5" Café-Height, 31.5" Bar-Height, 3', 4' & 5'	Drape	4-Sided	Polyester Poplin	Serged	✓	Machine		Full-Color Full-Bleed
	UltraFit Round	15	31.5" Bar-Height	Snug Fitted	4-Sided	Two-Way Stretch Fabric	Hemmed	✓	Machine		Full-Color Full-Bleed
PARTIAL COVERAGE	Lateral Runner	25	125" & 149"	Drape	Top & Partial Sides	Polyester Poplin	Serged	✓	Machine		Full-Color Top Only Full-Color Full-Bleed
	NEW! LazerLine Runner	22	28" & 57"	Drape	Partial Front, Top & Back	Polyester Poplin	Laser Cut	✓	Machine		Full-Color Front Only
	Standard Runner ★	24	28" & 57"	Drape	Partial Front, Top & Back	Polyester Poplin	Serged	✓	Machine		Full-Color Front Only Full-Color Full-Bleed
	Accent Runner	25	28" & 57"	Drape	Partial Front, Top & Back	Polyester Satin	Satin Trim	✓	Machine		Full-Color Imprint Full-Color Full-Bleed
	UltraFit Table Topper	15	6' & 8'	Snug Fitted	Top Only	Two-Way Stretch Fabric	Hemmed	✓	Machine		Full-Color Full-Bleed
	UltraFit Crossover	15	6'	Snug Fitted	Partial 4-Sided	Two-Way Stretch Fabric	Hemmed	✓	Machine		Full-Color Full-Bleed

NOTE: Flame-retardant table covers are FR Rated (flame retardant treated) in compliance with the National Fire Protection Association Standard No. 701

MATERIAL OPTIONS

POLYESTER POPLIN



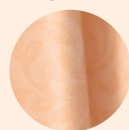
Wrinkle-resistant, durable fabric.

TWO-WAY STRETCH FABRIC



Nearly opaque and virtually wrinkle-free.

POLYESTER SATIN



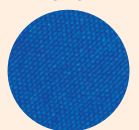
Rich, lustrous fabric with an upscale look.

400 DENIER POLYESTER



The same durable, weather-resistant material we use for our tent canopies.

POLYESTER PONGEE



Lightweight and designed for limited use.

PRINT OPTIONS



Underside of material is stock fabric color.



Underside of material is blank.



Underside of material is blank.

Full-Color Imprint

- Graphics can range in complexity from a simple one-color design to a detailed full-color design (item specific, see product pages for details)
- Vector art required
- Available in limited stock fabric colors only
- Artwork is imprinted on front only
- Minimum and maximum artwork size requirements apply
- Always roll your table throw for storage; do not fold
- Available on select throws only

Full-Color Front Only

- Graphic can range in complexity from a simple one-color design to a detailed full-color design
- Vector art preferred
- Available in stock fabric colors only
- Artwork is printed on front only
- Maximum artwork size requirements apply
- Now offering a larger maximum imprint area for more graphic coverage
- Fold and store in included poly bag

Full-Color Full-Bleed

- Ideal for complex designs, photographic images, or art with gradients
- Vector and raster art accepted
- Art is dye sublimated on white fabric only
- Full-color artwork can be printed across the entire throw
- No artwork size restrictions
- Fold and store in included poly bag

Visit showdowndisplays.com for more information.



ASI: 87188 PPAL: 254687 SAGE: 67383 UPIC: SHOWDOWN

Showdown
DISPLAYS

WHEN CHOOSING SIGNAGE HAVE YOU CONSIDERED...

- **LOCATION** - Will your sign be used indoors or out?
- **LONGEVITY** - How long will your sign be displayed?
- **FLEXIBILITY** - Will your message be permanent, or will it change frequently?
- **TRANSPORT** - Will your sign be stationary, or will you be transporting it from place to place?



★ = Best Sellers	PG	EASY TO CHANGE SIGN	TWO-SIDED	SUBSTRATE	OUTDOOR USE	WEIGHT	
OUTDOOR	NEW! Parking Pal	137	✓	✓	Reflective Media	✓	13 lbs.
	Simpo Square A-Frame	130	✓	✓	4 mm Corrugated Plastic	✓	6.25 lbs.
	Minicade A-Frame	130	✓	✓	4 mm Corrugated Plastic	✓	7.5 lbs.
	Simpo Sign II A-Frame ★	130	✓	✓	4 mm Corrugated Plastic	✓	10.5 lbs.
	Signicade Deluxe Chalkboard A-Frame	130	✓	✓	Chalkboard	✓	25 lbs.
	Signicade Deluxe A-Frame ★	130	✓	✓	4 mm Corrugated Plastic	✓	21 lbs.
	Narrowcade A-Frame	131	✓	✓	4 mm Corrugated Plastic	✓	8.5 lbs.
	Signicade A-Frame	131	✓	✓	4 mm Corrugated Plastic	✓	20 lbs.
	Metropolitan Signicade A-Frame	131	✓	✓	4 mm Corrugated Plastic	✓	27.75 lbs.
	Deluxe Wood A-Frame	132	✓	✓	Chalkboard with Surface Grip Decal	Short-Term	18-29.8 lbs.
	Economy Wood A-Frame	132	✓	✓	Chalkboard with Surface Grip Decal	Short-Term	8.5 lbs.
	Quick Change Wood A-Frame	133	✓	✓	Chalkboard with Surface Grip Decal	Short-Term	12.9-18.3 lbs.
	Horizontal A-Frame	135	✓	✓	Titan™ 13 oz. Scrim Vinyl	✓	11-18 lbs.
	Superstrong Angle Iron A-Frame	135	✓	✓	4 mm Corrugated Plastic	✓	6.5-13.5 lbs.
	EuroFit A-Frame	136	✓	✓	Polyester Knit	Short-Term	11-22 lbs.
	Twist-Up Oval A-Frame	136		✓	Polyester Knit	✓	8.25 lbs.
	NEW! Sunrise Lawn Sign	137	✓	✓	Super Poly Knit Fabric	✓	2.3 lbs.
	Outdoor Flex Sign ★	138	✓	✓	Titan™ 10 oz. Scrim Vinyl	✓	27 lbs.
	Outdoor Flex Sign with Ballast Base ★	138	✓	✓	Titan™ 10 oz. Scrim Vinyl	✓	26 lbs.
	Corrugated Plastic Sign	139		✓	4 mm Corrugated Plastic	✓	0.5-1 lb.
	Outdoor Rigid Base Sign	139	✓	✓	4 mm-10 mm Corrugated Plastic	✓	5.25-6.5 lbs.
	EuroFit Barrier	140	✓	✓	Polyester Knit	Short-Term	27-28.4 lbs.
	Barricade Cover	140		✓	Two-Way Stretch Fabric Titan™ 18 oz. Opaque Scrim Vinyl	✓	1.8-5.4 lbs.
	FrameWorx Flex	141	✓	✓	Fabric Mesh	✓	27.5 lbs.
	EuroFit Ballast Base	141	✓	✓	Polyester Knit	Short-Term	8 lbs.
	Door Wrap	148		✓	Two-Way Stretch Fabric	Short-Term	1.25-1.5 lbs.
Outdoor Surface Tac	149			Adhesive Aluminum Foil-Based Media	✓	0.8-3.8 lbs.	
Storm Mat ★	150			Polyester Carpeting with Rubber Backing	✓	4-10 lbs.	
INDOOR	Uptown A-Frame	134	✓	✓	Rigid PVC Board		15.5-24.25 lbs.
	Uptown Accent A-Frame	134	✓	✓	Rigid PVC Board		30.5 lbs.
	Base-X Sign	142	✓	✓	Foamcore		7.25-8.25 lbs.
	Single Sign	142	✓	✓	4 mm Corrugated Plastic		13 lbs.
	Flat Base Sign	142	✓	✓	4 mm Corrugated Plastic		13.5 lbs.
	Pedestal Snap Frame Sign	142	✓		Titan™ Polypropylene Media		5.5 lbs.
	Pedestal Sign	142	✓	✓	4 mm Corrugated Plastic		14.5 lbs.
	NEW! Impress Sign	143	✓	✓	Polyester Knit		14.25 lbs.
	Front - Load Snap Frame	144	✓		Titan™ Polypropylene Media		1.75-4.5 lbs.
	Top-Load Frame	144	✓		Titan™ Polypropylene Media		1.5-3.5 lbs.
	Crystal Edge Display	145	✓	✓	Backlit Media		5-13.7 lbs.
	LED Light Box	145	✓		Backlit Media		8.5-14 lbs.
	NEW! Canvas Signboard	146			Canvas Fabric		1.5-8 lbs.
	NEW! Glossy Aluminum Signboard	147			Aluminum		0.2-4 lbs.
	Countertop Mat	148			PVC Foam w/PVC Coated Polyester Woven Fabric		1.3-1.8 lbs. (set of 6)
	Indoor Surface Grip	149			Adhesive Matte Vinyl with Fabric Backing		0.6-2.4 lbs.
	Floor Hugger Mat ★	150			Nylon Yarn with Rubber Backing		8-16 lbs.
	NEW! Marketing Mat	151			40 mil Vinyl		.15-0.6 lb.
	Floor Decor	151			PVC Foam w/PVC Coated Polyester Woven Fabric		1.6-22 lbs.

SUBSTRATES

RIGID



- 4 mm & 10 mm Corrugated Plastic
- Styrene
- Foamcore
- Rigid PVC Board
- Chalkboard

BANNER



- Titan™ Polypropylene Media
- Titan™ 10 oz. Scrim Vinyl
- Titan™ 13 oz. Scrim Vinyl
- Titan™ 18 oz. Opaque Scrim Vinyl
- Titan™ No-Curl Hybrid Media
- Titan™ No-Curl Laminated Media

FABRIC



- Two-Way Stretch Fabric
- Polyester Knit
- Fabric Mesh

MAT



- PVC Foam w/PVC Coated Polyester Woven Fabric
- Nylon Yarn with Rubber
- Polyester Carpeting with Rubber

DECAL



- Adhesive Matte Vinyl with Fabric Backing
- Adhesive Aluminum Foil-Based Media

Visit showdowndisplays.com for more information.

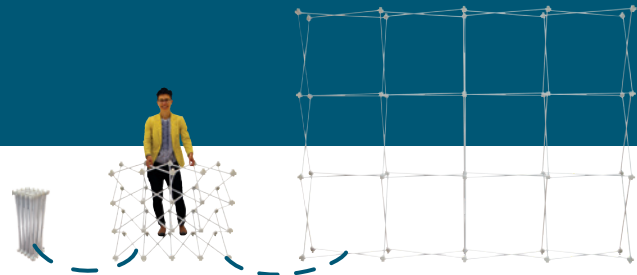


ASI: 87188 PPAL: 254687 SAGE: 67383 UPIC: SHOWDOWN

Showdown
DISPLAYS

WHEN CHOOSING A POP-UP HAVE YOU CONSIDERED...

- **SIZE** - What is the size of your space?
- **TRANSPORT** - How will this display be transported?
- **FREQUENCY** - How often will you be setting up and taking down your display?
- **FLEXIBILITY** - Will you be changing out your look and message frequently?
- **ACCESSORIES** - Do you need lights for your display, and will power be available?



		PG	EASE OF SETUP	FRAME WARRANTY	FRAME DURABILITY	PANEL INSTALLATION	PANEL MATERIAL	ADD-ONS
FABRIC	Splash	188	★★★★	2 Years	High-grade 0.03" aluminum frame with scissor construction and bayonet locking system. Medium-weight nylon connecting hubs.	Graphic panels install using hook-and-loop fasteners.	Polyester Knit Block-Out Fabric	Ultimate LED Light Kits sold separately (see page 217)
	Verge	190	★★★★	2 Years	High-grade 0.038" aluminum frame with scissor construction and bayonet locking system; gloss painted for maximum light reflection. Square extrusions provide an easy interface to install lights.	Pegs on the channel bars press into the frame's hubs to hold SEG panels in place.	Polyester Knit	Ultimate LED Light Kits sold separately (see page 217)
	Verge Glo	191	★★★★	2 Years	High-grade 0.038" aluminum frame with scissor construction and bayonet locking system; gloss painted for maximum light reflection. Square extrusions provide an easy interface to install lights.	Pegs on the channel bars press into the frame's hubs to hold SEG panels in place.	Premium Woven Polyester	Ultimate LED Light Kits sold separately (see page 217)
MULTI-PANEL	GeoMetrix	192	★★★★★	1 Year	Lightweight 0.03" aluminum spring-action pop-up frame.	Reinforced buttonholes on graphic panels attach to pegs on the frame's hubs.	Polyester Double Knit	Ultimate LED Light Kits sold separately (see page 217)
	Deluxe GeoMetrix	194	★★★★	2 Years	High-grade 0.03" aluminum frame with scissor construction and bayonet locking system. Medium-weight nylon connecting hubs. Rectangular extrusions provide stability and strength for shelves.	Reinforced buttonholes on graphic panels attach to pegs on the frame's hubs.	Polyester Double Knit	Ultimate LED Light Kits sold separately (see page 217) Internal Shelf (see page 194) Stabilizer Feet (see page 194) Connector Shelf (see page 197) End Panel Graphic Panels (see page 198)
	Deluxe GeoMetrix Connector	196	★★★	2 Years	High-grade 0.03" aluminum frame with scissor construction and bayonet locking system. Medium-weight nylon connecting hubs. Rectangular extrusions provide stability and strength for shelves.	Reinforced buttonholes on graphic panels attach to pegs on the frame's hubs.	Polyester Double Knit	Ultimate LED Light Kits sold separately (see page 217) Internal Shelf (see page 194) Stabilizer Feet (see page 194) Connector Shelf (see page 197) End Panel Graphic Panels (see page 198)
MURAL PANEL	Echo	199	★★★	1 Year	Lightweight 0.03" aluminum spring-action pop-up frame.	Individual locking channel bars for magnet-to-steel panel registration.	Fabric Panels Mural Panels	Case-to-Counter Conversion Kit included Ultimate LED Light Kits included with select kits
	Show 'N Rise	200	★★★★	2 Years	High-grade 0.03" aluminum frame with scissor construction and bayonet locking system. Medium-weight nylon connecting hubs. Rectangular extrusions provide stability and strength for shelves.	Shock cord magnet rails for magnet-to-magnet panel registration.	Fabric Panels Mural Panels	Case-to-Counter Conversion Kit included Ultimate LED Light Kits included Internal Shelf sold separately (see page 201)
	ARISE	202	★★★★★	Lifetime	High-grade 0.04" extruded aluminum frame with self-locking scissor construction. Medium-weight nylon connecting hubs.	Magnets connect bars to the frame for magnet-to-magnet panel registration.	Fabric Panels Mural Panels	Case-to-Counter Conversion Kit included Ultimate LED Light Kits included Internal Shelves sold separately (see page 203) External Shelves sold separately (see page 203)

PANEL MATERIAL

SPLASH POP-UP DISPLAYS



BLOCK-OUT FABRIC
Block-out fabric keeps light from shining through your display for perfect photoshoots in well-lit areas.



POLYESTER KNIT
Dye sublimation on polyester knit produces vibrant, rich colors.

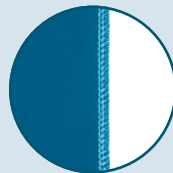


POLYESTER KNIT
Dye sublimation on polyester knit produces vibrant, rich colors.



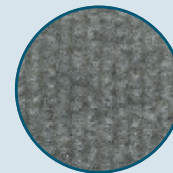
PREMIUM WOVEN POLYESTER
An ideal choice for backlit displays, premium woven polyester allows light to shine through.

GEOMETRIX POP-UP DISPLAYS



POLYESTER DOUBLE KNIT
Stretches both ways to create a taut fit on GeoMetrix frames; giving you countless options for setting up a creative display.

TRADITIONAL POP-UP DISPLAYS



HOOK-AND-LOOP RECEPTIVE FABRIC
High-quality polyester fiber.



MURAL PANEL
Titan™ no-curl laminated media is rigid so it will not wrinkle or curl.

Visit showdowndisplays.com for more information.



ASI: 87188 PPAL: 254687 SAGE: 67383 UPIC: SHOWDOWN

Showdown
DISPLAYS